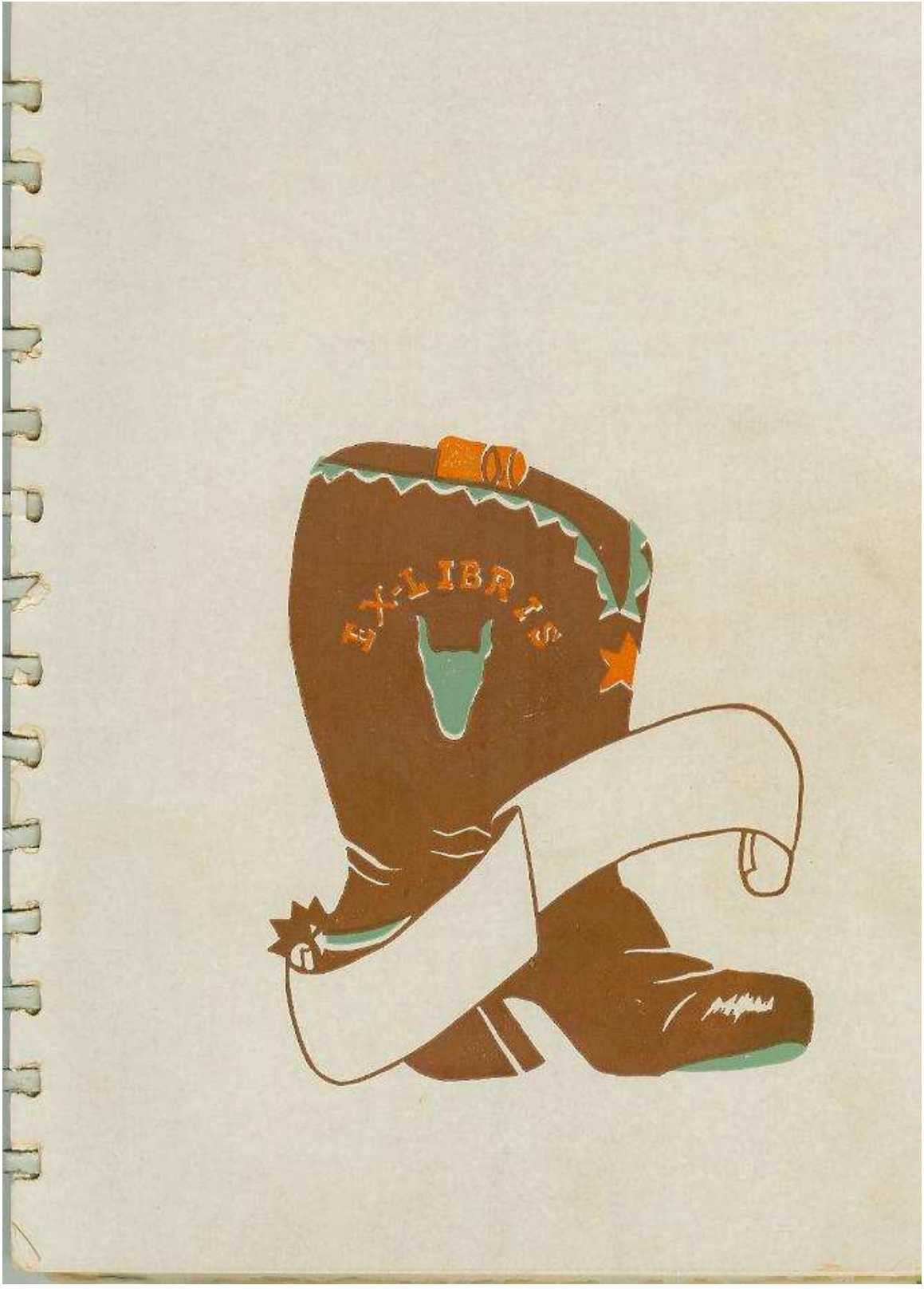


ROOSEVELT
ROUNDUP

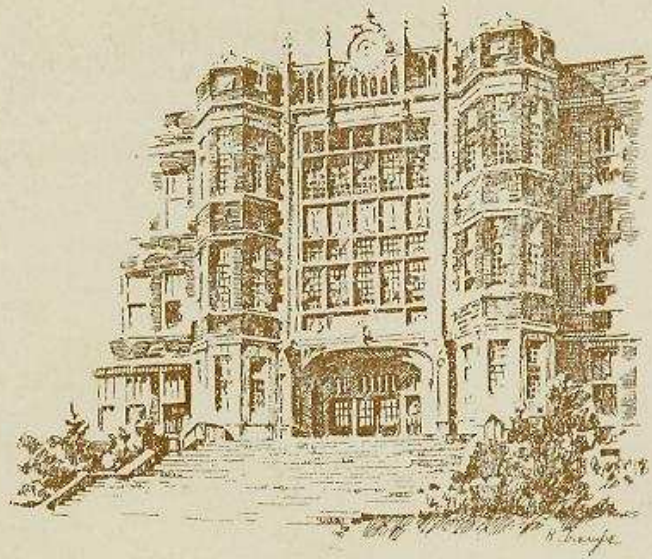


1942





ROOSEVELT



Edited, Compiled and Printed
— in —
Roosevelt High School
Cedar Rapids,
Iowa.

ANNUAL STAFF



First row—Leonard Hallquist, Howard Moeller, Loraine Jones, Vera Pyle, Ellen Marie Davis, Fern Bryant, Don Lundquist, Charles Miller.
 Second row—Rollin Oswald, George Blake, Mildred Krogh, Norma Marchal, Mary Ann Meaney, Enid Miner, Fred Andrews, Marvel Dulin, Jean Kelley, Mary Louise Harmon, Darlene Mathews, John Fattig, Richard Marks.
 Not pictured are: Vernon Zach, Helen Huff, Evelyn Geiger, Douglas Beauchamp.

Editors-in-Chief Vera Pyle, Ellen Marie Davis
 Associates — Norma Marchal, Mildred Denison, Mildred Krogh, Richard Marks, Fred Andrews.
 Business Managers Howard Moeller, Charles Miller
 Associates — Jean Marie Horak, Mary Henningsen, Jim Ensign, Hildred Ann Miller, Elaine Anderson, Gerald Trueblood, Arthur Hulshizer, Bill Fais, Naida Williams, Ardith Ebsen, JoAnn Gerber.
 Picture Editors Loraine Jones, Donald Lundquist, Fern Bryant
 Associates Mary Louise Harmon, Marvel Dulin, Lois Detlefson
 Typists—Mary Ann Meaney, Jean Kelley, Enid Miner, Evelyn Geiger, Betty Meyers
 Photographers Douglas Beauchamp, Rollin Oswald
 Art Editor Vernon Zack
 Associates Helen Huff, Rita Gallagher
 Printer Leonard Hallquist
 Associates John Fattig, George Blake, Kenneth Little
 Advisory Staff Miss Walker, Miss Danielson, Mr. Mau, Mr. Owen



FACULTY

Fred J. Kluss, Principal
Nelle Martin, Librarian
Addie Zika, Dean
Sara Slutsky, Secretary
Theodore Anderson, Woodwork

Margaret Porter, Voice
Litta Walker, English
Donald E. Brown, English
Rena Koters, Domestic Science
Lucille Duncan, Domestic Science

Ruth Zieke, Physical Education
H. M. Benninghoff, Science
Ellen Torstenson, Social Studies
William Owen, Mathematics
G. Ester Chapin, English

Anna Grissell, Commercial
Glenn Darling, Social Studies
H. K. Burmeister, Commercial
Laurence Gibson, Science
Beren'ce Moffit, Domestic Science

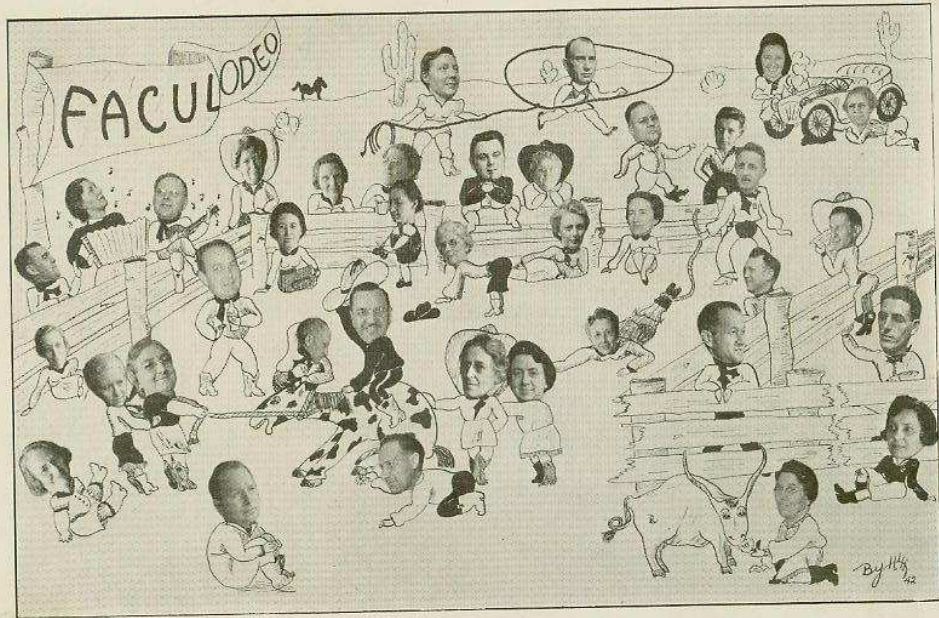
Jeanette Williams, Commercial
Roberta D. Sheets, English
William Vesely, Instrumental Music
Ada Patterson, Attendance
Katherine Bryan, English

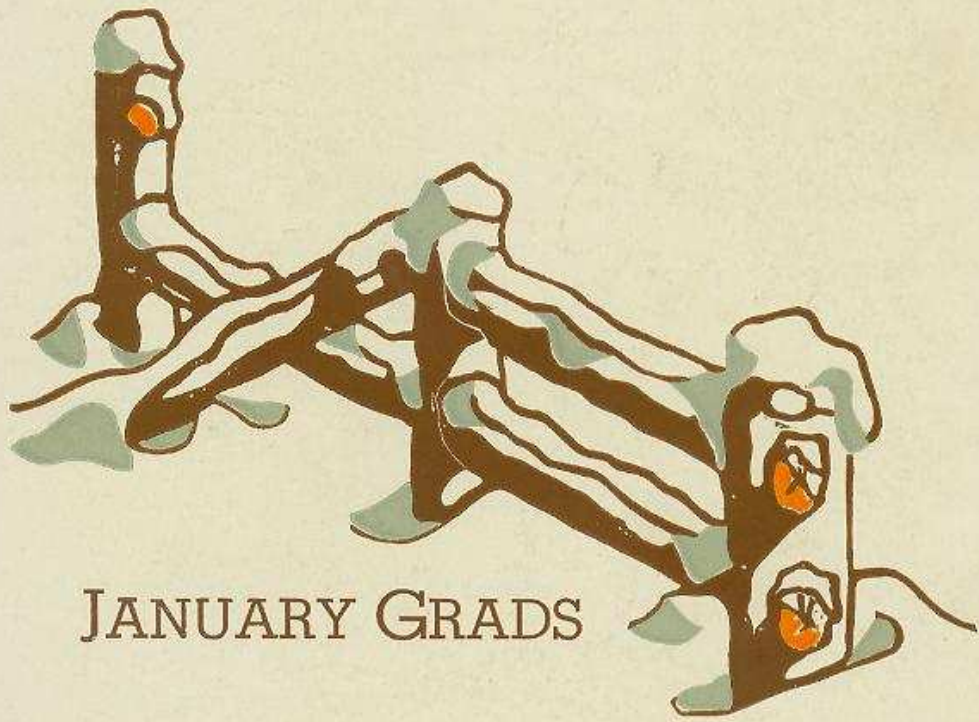
Donald P. Wolfe, Physical Education
Margaret Danielson, Art
Elmer Hedin, Mechanical Drawing
Minnie Ziesing, Domestic Science
Daryl Pendergraft, Social Studies

— Not Pictured —

Joseph Stolar, Science
O. Elizabeth Terrill, French
S. M. Pattee, Science
Mary Paul, Social Studies

Mabel Heisey, English
Jessie Chambers, Latin
Lloyd George, Metalwork
Chester Mau, Printing





JANUARY GRADS

JANUARY GRADUATES



RICHARD ANDERSON "Baldy"
 Forum Club; Glee Club; Student Council; Orchestra; Band.

JAMES BABA "Prot."
 Debate '40, '41; Manus Classica; Le Rendezvous; Forum Club.

BEVERLY BAIN
 T.M.T.M.; Manus Classica, President; Record Staff; Advertising Manager; Forum Club,
 Camera Club.

DOUGLAS BEAUCHAMP "Frenchie"
 Track '40; School Dramatics '40; Gamma Delta; Hi-Y; Yearbook Staff; Record Staff,
 Camera Club, Secy.-Treas.; Orchestra; Choir; Sigma Sigma; Quill and Scroll.

MARY LOU BLAYLOCK "Louie"
 T.M.T.M.; Choir; Annual Staff.

BETTE BOTHERIS "Chub"
 Hi-Y-Ette; Sigma Sigma; Record Staff; T.M.T.M.

LOUIS BROWN "Flash"
 Class President 12A; Rifle Club; Camera Club, Vice-President.

KENNETH BURESH "Kenny"
 Rifle Club; Camera Club; Boys' State.

BETTY JEANNE BURKE "Bets"
 Manus Classica; Kappa Kappa Rho; Hi-Y-Ette; Le Rendezvous; Quill and Scroll; Record
 Staff, Business Manager; Forum Club; Glee Club; Student Council.

REX CLINE
 Vice-President 10A-11B; Rifle Club; Camera Club.

JUANITA DAY "Nita"
 Kappa Kappa Rho; Hi-Y-Ette; T.M.T.M.; Glee Club; Sports Club; Choir; Archery Club.

MILDRED DENISON "Mick"
 Kappa Kappa Rho; Hi-Y-Ette; Glee Club; T.M.T.M.

HELEN DONISTHORPE "Doni"
 Kappa Kappa Rho; Hi-Y-Ette; Record Staff; Pep Club.

DeWITT DONOVAN "Dick"
 Football '39, '40, '41; Hi-Y, Vice-President; Sigma Sigma; Marching Band; Band.

MARVEL DULIN "Marv"
 School Dramatics '40, '41; Manus Classica; Aristotelian, Vice-President; Sigma Sigma;
 G.A.A.; Yearbook Staff; Record Staff; Music Club, Treasurer; Marching Band; National
 Music Contest, 1st Place Bassoon.

JAMES ENSIGN "Jim"
 Football '39, '40, '41; Basketball '39, '40, '41; Track '39, '41; School Dramatics '40, '41;
 11A-12B Class Vice-President; Manus Classica; Aristotelian; Sigma Sigma, Vice-President;
 "R" Club; Yearbook Staff; Rifle Club; Student Council, President; Orchestra; Marching
 Band; Boys' State, '41.

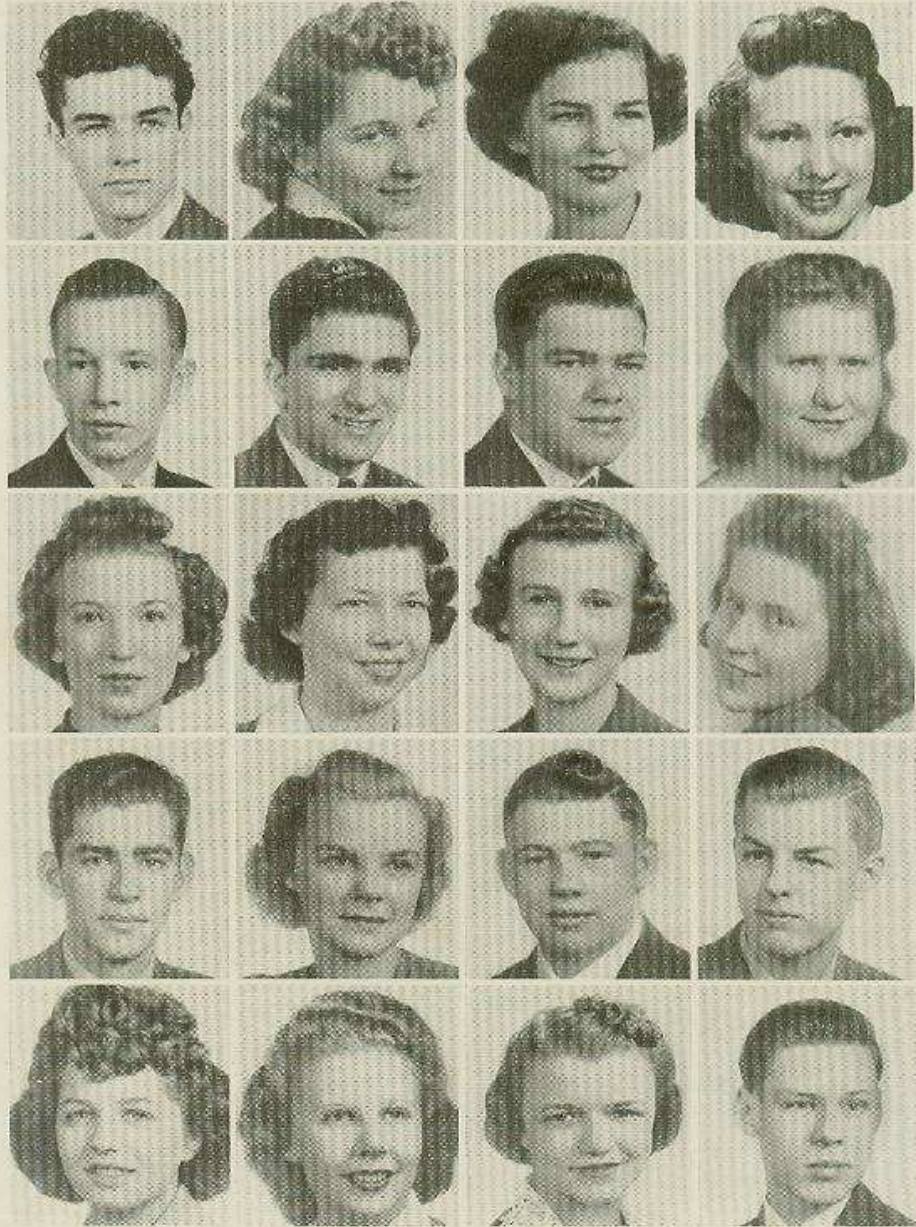
DOROTHY GETLIN "Dode"
 Kappa Kappa Rho; Hi-Y-Ette; T.M.T.M.; Forum Club; Glee Club; Pep Club.

HELEN GREEN "Irish"
 Manus Classica; Kappa Kappa Rho; Hi-Y-Ette; Record Staff.

EVELYNE GREENBERG "Evie"
 Hi-Y-Ette; Aristotelian; Sigma Sigma; Le Rendezvous, Vice-President; Quill and Scroll,
 President; Record Staff, Editor; Forum Club; Glee Club.

MARY LOUISE HARMON "Wheezie"
 School Dramatics '39, '40, '41, '42; Manus Classica; Gamma Delta, Stage Manager;
 Aristotelian, President; Sigma Sigma; G.A.A.; Record Staff; Music Club, Secretary; Stu-
 dent Council, Secretary; Orchestra; Music Contest '38; I.H.S.P.S. Second Place Winner.

JANUARY GRADUATES



ROY HAUSER "Howdy"
 Basketball '39, '40, '41; Track '39, '40; School Dramatics '40, '41; Class Secy.-Treasurer
 10A; Gamma Delta; Sigma Sigma; Printshop Foreman, Record Staff; Student Council;
 Boys' State 1940.

RUTH HAYWARD "Rudie"
 Kappa Kappa Rho; Secretary T.M.T.M.; Glee Club; Choir.

MARY HENNINGSEN "Trudy"
 School Dramatics '41, '42; Class Secretary 11A-12B; Gamma Delta, Secretary; Kappa
 Kappa Rho, Secretary; Hi-Y-Ette; G.A.A.; Glee Club; Student Council; Choir.

JEAN MARIE HORAK "Jeannie"
 School Dramatics '40; Manus Classica; Sigma Sigma, Treasurer; Le Rendezvous; G.A.A.;
 Secy.-Treasurer, Quill and Scroll; Record Staff; Orchestra; Yearbook; Aristotelian.

RICHARD HUMPHREYS "Dick"
 School Dramatics '41; Camera Club.

ABDALLAH IGRAM "Boomer"
 Music Club; Camera Club; Glee Club; Orchestra; Sports Club; Marching Band.

WILLIAM JENSEN "Bill"
 Sports Club.

LUCILLE JOHNS "Jonnie"
 Hi-Y-Ette; T.M.T.M.; Glee Club; Forum Club.

BARBARA JOHNSON "Bobbie"
 School Dramatics '39, '40, '41; Manus Classica; Gamma Delta; Hi-Y-Ette.

LORAIN BERTHA JONES "Jonesie"
 School Dramatics '39, '40, '41; Manus Classica; Hi-Y-Ette; Secretary, Aristotelian; Sigma
 Sigma; G.A.A.; Le Rendezvous; Picture Editor, Yearbook Staff; Music Club, President;
 Orchestra; Marching Band; Music Contest State Winner, '40; Band.

ELEANOR KACER "Ellen"
 President, Kappa Kappa Rho; Hi-Y-Ette; T.M.T.M.; Choir.

JEAN KELLEY "Freckles"
 Kappa Kappa Rho, Secretary; Hi-Y-Ette; T.M.T.M.; Glee Club; Yearbook Staff.

AMOS KENT "Amouse"
 Music Club, President; Orchestra; Radio Club; Marching Band; Music Contest; Aristo-
 telian.

PHYLLIS KOHL "Phil"
 Hi-Y-Ette; Sigma Sigma; Glee Club; Sports Club; Choir; Chorus.

DALE LEMAR "Hedy"
BILL LYNCH "Squeaky"

NORMA MARCHAL "Pat"
 Kappa Kappa Rho; Hi-Y-Ette; Le Rendezvous; Yearbook Staff; T.M.T.M., Vice-President;
 Forum Club; Student Council; Pep Club.

DARLENE MATHEWS "Blondie"
 Kappa Kappa Rho; Hi-Y-Ette; Yearbook Staff; Glee Club; T.M.T.M.; Forum Club, Vice-
 President.

MARY ANN MEANEY "Barney"
 Kappa Kappa Rho, Vice-President; Hi-Y-Ette; Yearbook Staff; Glee Club; Sports Club;
 Choir.

HOWARD MOELLER "Howdy"
 Class President 11A-12B; Hi-Y, President; Aristotelian; Sigma Sigma, President; Year-
 book Staff, Business Manager; Student Council.

JANUARY GRADUATES



ROBERT MONEYPENNY "Bob"
Sports Club; Choir; Tumbling '38, '40, '41, '42.

VERA PYLE
Manus Classica; Hi-Y-Ette; Le Rendezvous; Editor, Yearbook Staff.

EMORY DALE SAMPLE "Sam"
Football '38, '39; Basketball '38, '39, '40, '41, '42; Track '39, '40, '41; Class President,
12A; Sigma Sigma; "R" Club, Vice-President; Student Council; All-State Basketball '40,
'41.

CRAIG SATTERLY

ALETHA SELTRECHT "Tiny"
Hi-Y-Ette; Glee Club.

BETTY SHEETS
Gamma Delta; Forum Club; School Dramatics '39, '40, '41.

JUNE SMITH "Emy"
Le Rendezvous; Record Staff.

JANET SNYDER "Janie"
Kappa Kappa Rho; G.A.A.; Glee Club.

ARLENE THOMAS "Tommy"
Class Secretary, 12A; Kappa Kappa Rho, Vice-President; Hi-Y-Ette; Glee Club.

ALBERT THOMPSON "Stinky"
School Dramatics '40, '41, '42; Gamma Delta, Vice-President; Choir.

MARTIN THORSON "Mart"
Class President 10A; "R" Club, President; Forum Club, Vice-President; Student Council;
Sports Club; Boys' State '41; Football '39, '40, '41; Track, '40.

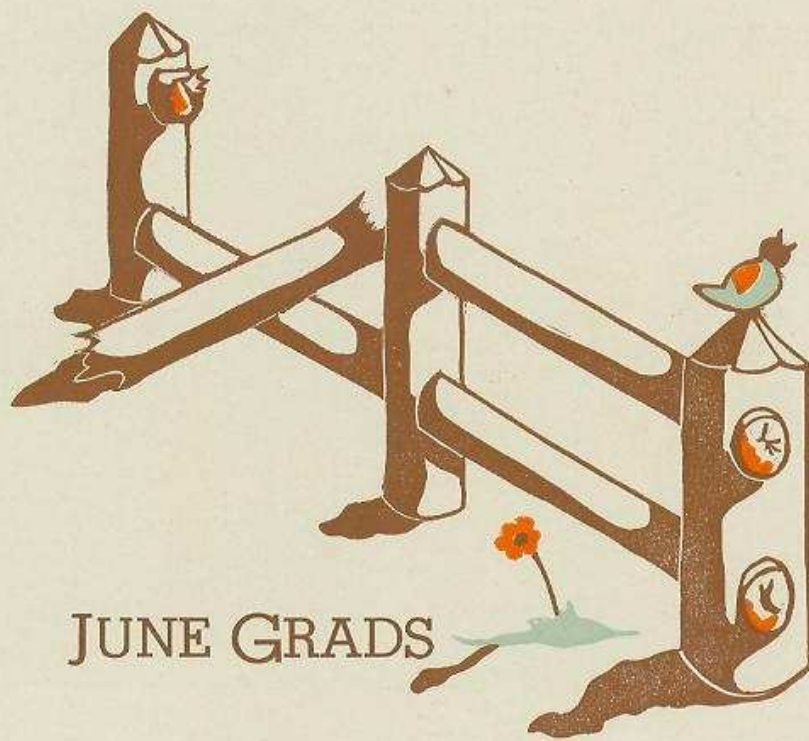
MARCELLA WALTON "Marcie"
T.M.T.M.; Sports Club.

GEORGE YOUTZY
Hi-Y; Sigma Sigma; Choir; Basketball '39, '40, '41; Track '41; School Dramatics '41, '42;
Gamma Delta.

EVELYN ZAMASTIL "Zamie"
Kappa Kappa Rho; Hi-Y-Ette; Sports Club.

SNAPS
— SEE LAST PAGE —





JUNE GRADS

JUNE GRADUATES



RUBY ADAMS Record Staff; Glee Club.	"Goldie"
DORIS ANDERSON Kappa Kappa Rho; Hi-Y-Ette.	"Dorrie"
ELAINE ANDERSON Debate '40, '41; School Dramatics '41; 10B-10A Class Secretary; Manus Classica, Secretary; Hi-Y-Ette; Aristotelian, Secretary; Sigma Sigma; Quill and Scroll, President; Yearbook Staff; Record Staff, Editor; Camera Club, President; Pep Club.	
FRED ANDREWS 11B-11A Vice-President; Aristotelian; Sigma Sigma, President; Yearbook Staff; Student Council, Sergeant-at-Arms; Orchestra; Marching Band; Chemistry Club, President.	"F. A."
RALPH CLINTON ANDREWS Sigma Sigma; Rifle Club, Treasurer.	"Clint"
BOB ARP Manus Classica; Sports Club.	"Arpy"
BOB BAIN Manus Classica; Le Rendez-vous; Chemistry Club.	"Mumpsie"
FRANCES BARNETT T.M.T.M.	
GEORGE BLAKE Yearbook Staff; Rifle Club; Orchestra; Sports Club; Choir; Marching Band.	"Blake"
RICHART BLATTNER Basketball '41, '42; Choir.	"Dick"
FERN BRYANT Debate '40, '41; School Dramatics '40, '41; Manus Classica, Vice-President, President; Gamma Delta; Hi-Y-Ette; Aristotelian; Sigma Sigma; Yearbook Staff, Picture Editor; Sports Club; Choir; Pep Club.	"Fernie"
ANN BUSS Music Club; Orchestra; Choir; Marching Band.	"Nancy"
EVERETTE EARL BURK Sports Club.	
DORIS MAE CANTERBURY T.M.T.M.; Pep Club.	"Dorie"
MARZELLA CHITTY Kappa Kappa Rho; Choir.	"Kitty"
ROBERT CLARK Le Rendez-vous; Sports Club; Chemistry Club.	"Bob"
BOB CURTTRIGHT Marching Band; Orchestra; Band; Sigma Sigma; Music Club; Sports Club.	
ELLEN MARIE DAVIS Manus Classica, Secretary; Kappa Kappa Rho; School Dramatics '41; Hi-Y-Ette; Aristotelian; Sigma Sigma, Vice-President; G.A.A., Treasurer; Quill and Scroll, Secretary; Baton Twirlers; Yearbook Staff, Editor-in-Chief; Record Staff; Student Council; Girls' Rifle Club; Pep Club.	"Guffie"
STANLEY DAVIS Football '39, '40; Basketball '39, '40, '41, '42; Track '39, '40, '41; School Dramatics '42; Choir, President.	"Stan"
LOIS DETLEFSON Manus Classica; Hi-Y-Ette; Sigma Sigma; Yearbook Staff; Choir; Chemistry Club.	"Squirt"

JUNE GRADUATES



DOROTHY De WALD Kappa Kappa Rho, Secretary-Treasurer; Forum Club.	"Skinny-wow-wow"
VIRGINIA DUNAHUGH Hi-Y-Ette; Forum Club, President; Glee Club; Choir.	"Ginnie"
ARDITH EBSEN Manus Classica; G.A.A.; Record Staff.	"Arky"
JANICE EVELYN ECKLOR Music Club; Orchestra; Choir; Marching Band.	"Sodie"
RICHARD ERICKSON	"Dick"
BILL FAIS Marching Band; Chemistry Club; School Dramatics '42; Track '41.	"Red"
JOHN FATTIG Track '40, '41, '42; School Dramatics '41; 12B-12A Class President; Hi-Y, Vice-President; Yearbook Staff; Forum Club; Student Council; Sports Club; "R" Club; Tennis; Golf.	"Fatigue"
DONA MAY FAULKNER Kappa Kappa Rho; Le Rendez-vous; Forum Club; Pep Club.	"Donny"
WINIFRED FOULK School Dramatics '41; Hi-Y-Ette; T.M.T.M.; Forum Club; Glee Club; Student Council; Choir.	"Winnie"
DOROTHY FREEMAN Debate '40; Kappa Kappa Rho; Hi-Y-Ette.	"Dot"
RITA GALLAGHER Hi-Y-Ette; Aristotelian; Sigma Sigma; Quill and Scroll, Treasurer; Yearbook Staff; Record Staff; Music Club, Secretary; Camera Club; Student Council; Orchestra.	"Wheatie"
BOB GARDNER Football '38, '39, '40; Basketball '38; Sports Club.	"Flash"
EVELYN GEIGER Hi-Y-Ette; G.A.A.; Le Rendez-vous; Yearbook Staff; Student Council; Pep Club; Chemistry Club; Record Staff.	"Suz"
JO ANN GERBER Hi-Y-Ette; Aristotelian; Le Rendez-vous, Treasurer; Yearbook Staff; T.M.T.M., President, Treasurer; Student Council; Pep Club.	"Ducky"
RICHARD GERBER Rifle Club; Sports Club.	"Dick"
LEON GREENBERG Manus Classica; Sports Club.	"Luscious"
ALFRED GRIESS Sports Club.	"Al"
LEONARD HALLQUIST Yearbook Staff; Forum Club.	"Hawky"
MARIE LOUISE HANSEN School Dramatics '40, '41, '42; Gamma Delta; Hi-Y-Ette; G.A.A.; Sports Club; Pep Club.	"Angel"
BETTY JANE HASEK Kappa Kappa Rho; T.M.T.M.; Forum Club; Student Council.	"Bet"

JUNE GRADUATES



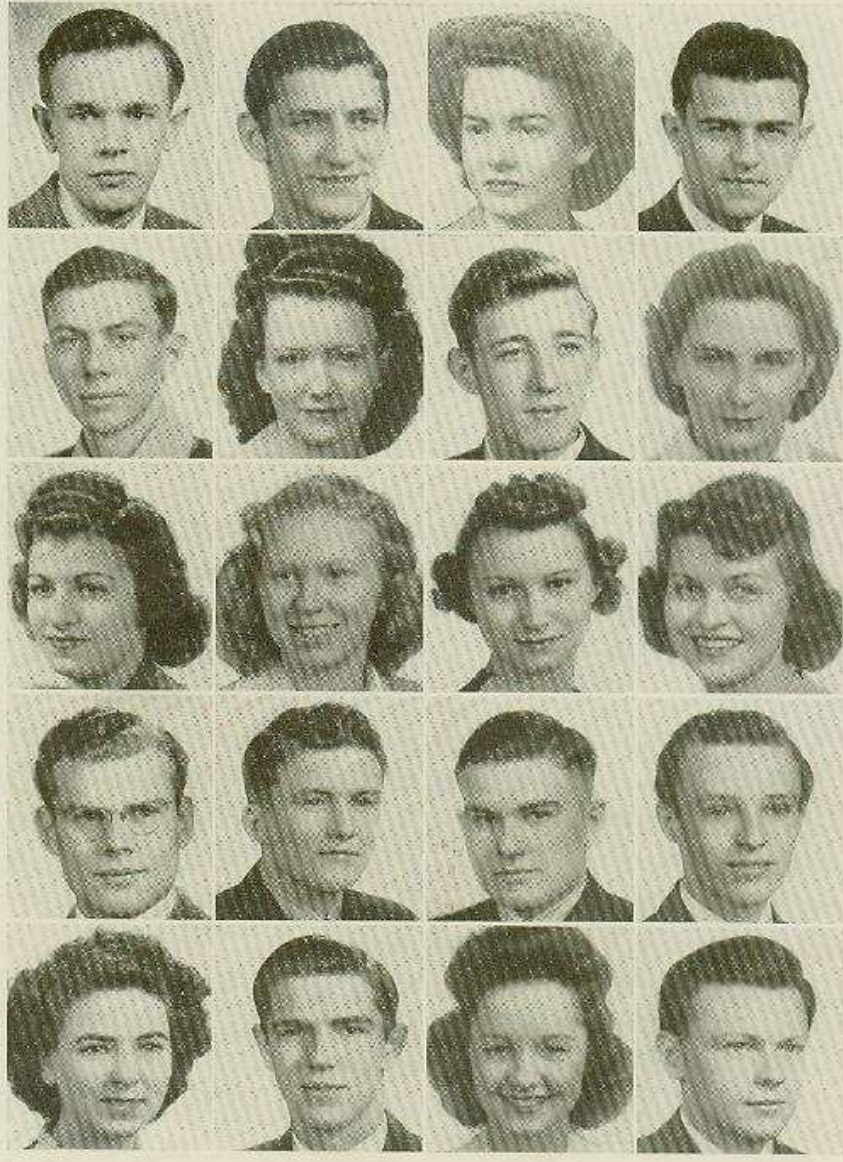
MERCEDES HERRING	"Merc"
RUTH HIGH G.A.A.; T.M.T.M., President.	"Dick"
BETTY HINTON Manus Classica, Secretary; Baton Twirlers, Leader; Music Club; Orchestra; Marching Band, Drum Major.	"Betts"
EMIL HOBEL	"Teek"
HELEN HUFF Gamma Delta; Hi-Y-Ette; G.A.A.; Yearbook Staff; Choir; School Dramatics '41.	"Huffy"
ARTHUR HULSHIZER Football '39, '40; Rifle Club; Sports Club.	"Art"
LEE ARTHUR ILTEN Football '41; Track '41; Rifle Club; Sports Club; Choir; Chemistry Club.	"Art"
VERNON JACKSON	
BETTY LOUISE JOHNSON T.M.T.M.	
PHYLLIS J. JOHNSON Kappa Kappa Rho; Choir.	"Phil"
RUTH JOHNSON Hi-Y-Ette; Pep Club.	"Johnnie"
BOB KENNEDY Sports Club; Chemistry Club.	
CALVIN KENNEDY Basketball '39, '40; Track '39, '41.	"Cal"
NATALIE F. KINT Baton Twirlers; T.M.T.M.; Student Council.	
OLGA MARIE KOLDA Kappa Kappa Rho; Hi-Y-Ette; T.M.T.M., Treasurer; Forum Club.	"Olly"
EDWIN KOUBA Rifle Club.	"Ed"
ELVANNE KRIZ Manus Classica, Secretary; Aristotelian; G.A.A.; Music Club; Orchestra; Marching Band.	"Krizie"
MILDRED KROGH School Dramatics '40, '41, '42; Manus Classica; Gamma Delta; Hi-Y-Ette, Vice-President; Aristotelian; Sigma Sigma; Quill and Scroll, Vice-President; Yearbook Staff; Record Staff; Sports Club; Pep Club; Chemistry Club, Secretary-Treasurer; Class Secretary 11B, 11A; Cedar Falls Girl Reserve Conference; Baton Twirlers.	"Torchy"
IRENE KROUPA Kappa Kappa Rho; Hi-Y-Ette; Student Council.	"Gus"
BASTIAN KRUIDENIER Debate '41, '42; Sigma Sigma, Secretary; Camera Club; Sports Club; Choir.	"Oscar"

JUNE GRADUATES



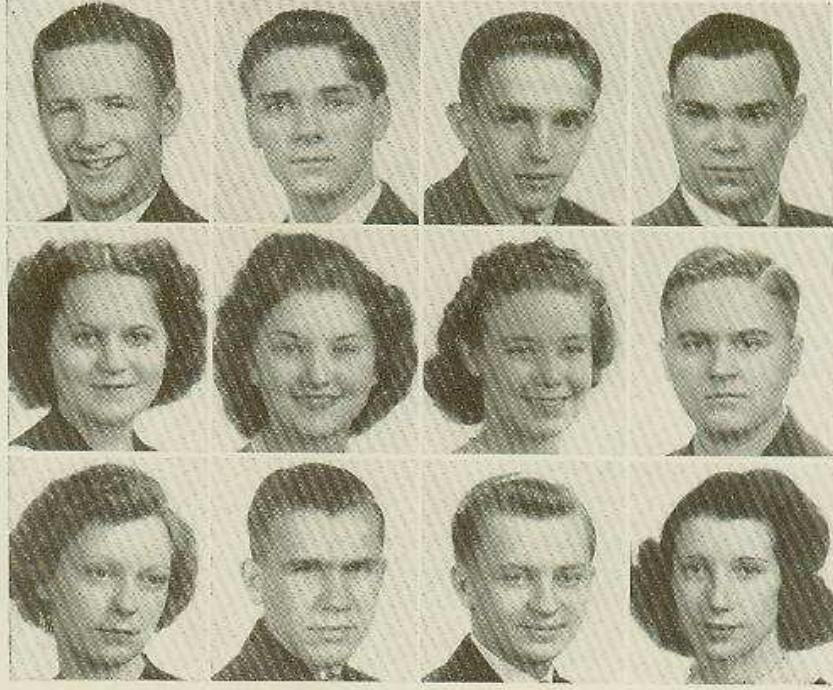
DOROTHY LEECH Kappa Kappa Rho; Hi-Y-Ette.	"Dodie"
KEITH LISTEBARGER Track '41; Debate '42; Rifle Club; Music Club; Forum Club; Sports Club; Band.	"Liste"
DORIS LOCHER	"Dorie"
BETTY LUCAS Kappa Kappa Rho; Record Staff; Sports Club; Pep Club.	"Bet"
DONALD LUNDQUIST Football '40; Track '41; School Dramatics '40, '41, '42; Manus Classica. Secretary; Hi-Y, Chaplain; Aristotelian, President; Sigma Sigma; Yearbook Staff, Picture Editor; Student Council; Minneapolis Hi-Y Conference; Chemistry Club.	"Lunk"
WILLIAM McMANES Football '39; Track '41; School Dramatics '39, '41; Gamma Delta; Chemistry Club.	"Bill"
BERNITA MAIN Manus Classica; Le Rendez-vous; T.M.T.M.	"Nita"
DOROTHY MARIE MANAK Hi-Y-Ette; Glee Club.	"Dorth"
RICHARD MARKS Football '38, '39, '40, '41, Captain '41; School Dramatics '42; Hi-Y; Aristotelian; Sigma Sigma; "R" Club, President; Yearbook Staff; Student Council, Vice-President, President; Chemistry Club, Vice-President; Class Vice-President 10B-10A; Hawkeye Boys' State.	"Dick"
CLIFFORD MELBERG Sigma Sigma; Record Staff; Mixed Chorus.	"Cliff"
HENRY MERKLIN	"Hank, the Kid"
BETTY MEYERS Kappa Kappa Rho; Hi-Y-Ette; Yearbook Staff; Glee Club; Student Council; Choir.	"Trudy"
BUDDY MEYERS Gamma Delta, Vice-President; Sigma Sigma.	"Leo"
CHARLES MILLER Gamma Delta, President, Vice-President; Hi-Y, Secretary-Treasurer, President; Aristotelian, Vice-President; Yearbook Staff, Business Manager; Student Council, Vice-President; Radio Club; Chemistry Club; Boys' State '41; Class President 10B-10A; School Dramatics '40, '41, '42.	"Chuck"
HILDRED ANN MILLER Manus Classica; Hi-Y-Ette, Vice-President, President; Sigma Sigma; Le Rendez-vous; Girls' Rifle Club; Yearbook Staff; Record Staff; Orchestra.	"Hildy"
ENID MINER School Dramatics '41; Kappa Kappa Rho; Sigma Sigma; Student Council; Choir, Secretary-Treasurer; Class Secretary 12B-12A; Chemistry Club; Hi-Y-Ette.	"Mushy"
DAVID MITCHELL Basketball '42; Track '40; School Dramatics '41, '42, Stage Manager; Record Staff; Sports Club.	"Scotchie"
ARDYS MORRISON Pep Club.	"Ardy"
THOR NORLAND Rifle Club; Sports Club.	"De Wald"
MAXINE OLVER T.M.T.M.	"Max"

JUNE GRADUATES



JOHN PEALER Football '39, '40, '41; Track '41; Class President 11B-11A; School Dramatics '40, '41; Boys' State '41; Chemistry Club; Gamma Delta; Hi-Y; Sigma Sigma; "R" Club; Student Council.	"Johnny"
VERNON PETRANEK Golf '40, '41, '42; Orchestra; Sports Club.	"Pete"
DOROTHY POLLOCK Glee Club.	"Polly"
MAURICE RAPAPORT Record Staff; Choir; Yearbook Staff.	"Whiskers"
HERBERT RAWSON	"Herb"
DORIS GAIL ROGERS T.M.T.M.; Glee Club; Choir; Mixed Chorus.	"Dorie"
PAT RYAN	
LORRINE SELZER School Dramatics '41, '42; Gamma Delta; Aristotelian; Sigma Sigma.	"Fairfax"
FRIEDA SHERONICK Kappa Kappa Rho; Hi-Y-Ette; Glee Club; Choir, Chorus.	"Fritz"
DORALEE SKERIK Hi-Y-Ette; T.M.T.M.	"Dode"
LUCILLE SOUKUP G.A.A.; T.M.T.M.; Secretary; Glee Club.	"Dutchy"
ROMANA SPIKER T.M.T.M.	"Monie"
HENRY STARK Rifle Club, President; Sports Club; Choir; Class Vice-President 12B-12A.	"Zeke"
MELVIN STEPANEK Track '41; Rifle Club; Record Staff; Choir.	"Step"
ROBERT STEUBER Football '40; Basketball '40, '41; Sports Club; Marching Band.	"Casey"
TED STEVENSON Track '40; Forum Club; Glee Club; Orchestra; Band; Sports Club; Choir.	"George"
MARIE SUTCLIFFE School Dramatics '39, '40, '41, '42; Gamma Delta.	"Phoebe"
EUGENE TAYLOR Rifle Club; Student Council; Sports Club.	"Gene"
DOROTHY TEMEYER Kappa Kappa Rho; G.A.A.; Sports Club.	"Dottie"
JAMES THOMPSON Le Rendez-vous.	"Jim"

JUNE GRADUATES



GERALD TRUEBLOOD
Student Council; Sports Club; Choir; Chemistry Club.
ROBERT TVRDIK
Football '39, '40.
LOUIS VLASEK
DONALD VOREL
Rifle Club; Sports Club.

"Uncle Jerry"

"Joe Bumbala"
"Don"

VLASTA VOTROUBEK
T.M.T.M.
NAIDA WILLIAMS
Manus Classica; Hi-Y-Ette; Gamma Delta, Secretary; Baton Twirlers; Yearbook Staff;
Girls' Rifle Club; Glee Club; School Dramatics '41, '42.
GENEICE WOLFE
Kappa Kappa Rho; Hi-Y-Ette; Marching Band.
LOREN WORLEY
Rifle Club; Sports Club.

"Pee Wee"

"Naid"

"Woofy"

AGNES YANACEK
T.M.T.M.
LORMA YARDLEY
VERNON ZACH
Yearbook Staff; Choir.
ADELAIDE ZAMASTIL
T.M.T.M.

"Aggie"

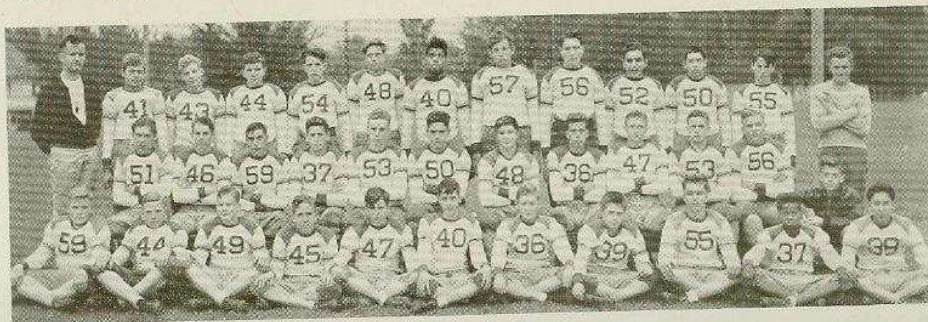
"Quask"
"Joe"

"Zamie"

SHOTS
— SEE LAST PAGE —







FOOTBALL

With Mart Thorson and Bob Beem calling signals on offense and defense respectively, the 1941 Football season opened with five lettermen: Mart Thorson, Bob Beem, Fred Bissell, Dick Marks, and Tom Phelps. The Teds showed an improvement over the performance of 1940 in riding to two wins and one tie, with the famous Thorson-to-Sebern pass being acclaimed as the most consistent ground gaining pass in the conference.

Those boys receiving varsity football awards in '41 were: Dick Marks* (Captain), Fred Bissell, John Sebern, Martin Thorson*, Tom Gallagher, Bill Haddad, Jim Ensign*, Bill Taylor, DeWitt Donovan*, Tom Phelps, Bob Kime, John Pealer*, Bob Beem, Dick Lewis, and Doug Shaheen; Charles Kemme and Eddie Miller, managers. Fred Bissell and Bob Beem were elected as co-captains for 1942. Also, they both received All-State Honorable Mention.

* Graduating seniors.

SEASON SCORES

Sept. 20	Marshalltown	7	—	Roosevelt	7
Sept. 25	East Waterloo	32	—	Roosevelt	6
Oct. 10	McKinley	7	—	Roosevelt	12
Oct. 17	Franklin	13	—	Roosevelt	0
Oct. 24	Clinton	34	—	Roosevelt	8
Oct. 30	Dubuque	7	—	Roosevelt	12
Nov. 5	Grinnell	Cancelled	—		
Nov. 11	Wilson	14	—	Roosevelt	7

VARSITY

First row—Martin Thorson, John Sebern, Bill Taylor, Bill Haddad, Bob Carpenter, Bob Kime, Bob Beem, Dick Marks, Dick Lewis, Don Washburn.

Second row—Coach Wolfe, Fred Bissell, Ralph Meyer, Milford Smith, Earl Kenney, Jim Black, Jim Ensign, Bob Bednasek, Warren Johnson, Tom Gallagher, Jack Carney, Manager Eddie Miller.

Back row—John Pealer, Kenny Little, Bruce Claffin, Bill Jensen, Lee Ilten, Bud Fuller, Don Kuhn, Dale Thompson, Doug Shaheen.

SOPHOMORE

First row—Don Maurer, Don Hutton, Dick Nilsson, Don Singer, Bill Finnigan, Jim Wilson, Ray Petrazelka, Jack Little, Phil Wilson, George Reed, Emil Yardley.

Second row—Joe Fiala, Glen Athey, Jack Hoffman, Bob Gray, Bill Cox, Bob Greenlee, Louis Kelley, Howard Sawyer, Gaylord Duvaul, Bill Kollman, Bill Willert, Manager Bill Stodla.

Third row—Coach Leslie Grigg, Leland Dankert, Kenny Cooper, Ralph Davis, Bill Johnson, Joe Mittan, Tom Wingfield, Jim Schuknecht, Bob Elliott, George Baba, Jack Florang, Bud Dennison, Manager Chuck Kemme.



BASKETBALL

1941 - 1942

In spite of the fact that the Roosevelt basketball squad lost three seniors in mid-season, the team made a very good showing in the conference. The Roosevelt players scored a higher percentage of points than any of their opponents, and also had the fewest personal fouls chalked against them. Emory Sample, team center and 1940-1941 All State forward, graduated in mid-season, but nevertheless tallied five points more than the 115 netted by Johnny Sebern, the season's second highest scorer. Roosevelt placed second in the city, having won 11 games from a total of 19 played, including winning the sectional tournament.

SEASON SCORES

Roosevelt	42	—	Marshalltown	23
Roosevelt	16	—	Davenport	38
Roosevelt	20	—	Waterloo, East	21
Roosevelt	43	—	McKinley	23
Roosevelt	43	—	Waterloo, West	35
Roosevelt	32	—	Wilson	18
Roosevelt	32	—	Monticello	11
Roosevelt	40	—	Clinton	31
Roosevelt	34	—	Franklin	39
Roosevelt	28	—	Burlington	43
Roosevelt	22	—	Dubuque	40
Roosevelt	37	—	Centerville	29
Roosevelt	16	—	Wilson	14
Roosevelt	25	—	Franklin	28
Roosevelt	16	—	McKinley	35
Roosevelt	24	—	Springville	19
Roosevelt	32	—	Mt. Vernon	17
Roosevelt	30	—	Manchester	16
Roosevelt	28	—	Dubuque	50

VARSITY SQUAD — BASKETBALL

First row—Lumir Dvorak, John Sebern, Stanley Davis, Emory Sample, Martin Thorson, James Black, Jim Ensign, Fred Bissell, Dick Blattler.
Second row—Bob Gallagher, Dick Zobl, Don Kuhn, Ralph Meyer, Bub Speraw, Bob Beem, Bob Carpenter, Dick Lewis, Bob Thorson, Coach Wolfe.
Third row—Manager Arthur Smith, Bob Hassel, Don Hillmer, Roy Hauser, Dick Harrington, Jack Carney, Manager Ed Miller.

SOPHOMORE BASKETBALL

First row—Lyman Euken, Bill Foushee, Richard Dice, Tom Gallagher, Glen Athey, Milford Smith, Alfred Shamberger, Phillip Wilson, Jack Hoffman.
Second row—Mr. Jones, Gene Oswald, Roy Petrzelka, Gene Phillips, Bill Cox, Joe Mitton, Bill Willard, Jim Matejka, George Reid.
Third row—Charles Kemme, Jim Wilson, Billy Cohea, Keith Johnson, Leonard Sturn, Everett King, Bob Rowell.

TUMBLING TEAM



Counterbalance



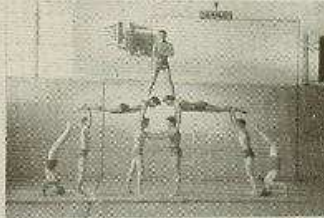
Suspended



Fan



On High



Steel Structure



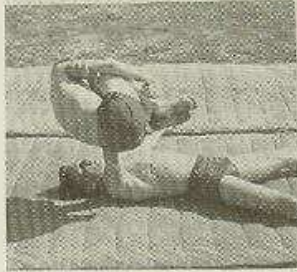
Church



Coach G. H. Darling

Captain Eddie Buck

First row—Dick Krohn, Norman Rowray, Bill Hobel, Ed Moneypenny, David Frank, Cliff Morrison.
 Second row—Bob Shorman, Bill Davenport, Bob Moneypenny, Louis Yeakle, Bruce Lane.
 Third row—Hugo Sindelar, Bob Dvorak, James Davenport, Dale Newport, Eddie Buck, Franklin Main.



Dead Weight



— GIRLS —
— ATHLETICS —



Roosevelt High School

SPORTSMANSHIP CODE

WE, THE STUDENTS OF ROOSEVELT HIGH SCHOOL, BELIEVE IN GOOD SPORTSMANSHIP. WE FEEL THAT BETTER SPORTSMANSHIP CAN BE OBTAINED BY STRIVING TO FULFILL THE FOLLOWING:

IN ATHLETICS: Athletics is one of the best teachers of self control and good sportsmanship.

We play to win. We will not gloat over our success, but will accept the victory modestly.

We will accept defeat without excuses, but will resolve to try harder next time.

We believe that clean minds and clean bodies make clean sports. An athlete who breaks training is not a good sport. We will cooperate with the athletes in maintaining all training rules.

We believe that the officials are competent and fair. We hope to show them the courtesy and respect due them in performing their difficult task.

We will treat our opponents as our guests, giving them credit where credit is due.

We will be courteous to fellow spectators, remembering that they came to enjoy the game. We will leave when the game is over, not before.

We cheer for our band, baton twirlers, and cheerleaders. We appreciate their long hours of practice.

We will uphold this code upon all occasions, not only at our own games, but at those of others as well.

IN THE AUDITORIUM: Group assemblies are a stimulant for broader life and good fellowship.

We will show courteous attention when we are the audience. Those taking part in the program should be regarded as guests and should be treated accordingly. We will give appreciative, but not hilarious, response in recognition of effort.

We will cooperate to the best of our abilities, when asked to take part in a program. Our talents should be shared with others. Promises to appear on a program should be considered binding.

We will respond willingly when the audience is asked to participate.

We will enter and depart from the auditorium in an orderly manner.

We will by our own good conduct set an example for outsiders.

IN THE CLASSROOM: The classroom is the heart of our school.

We will do each task to the best of our abilities.

We will make our study periods a place of quiet consistent concentration and our recitations a time for the participation of every student.

We acknowledge the fairness of our teachers. We have confidence in ourselves and will trust to our own intelligence to make an honest individual effort to accomplish our work.

We believe in being courteous both to teachers and to fellow students. We will make a special effort to be friendly with new students.

We believe in regularity of attendance, promptness and alertness in everything we do.

IN EVERY PHASE OF OUR SCHOOL LIFE:

We take pride in the good condition of school property, and assume responsibility for keeping it the same.

We will make the halls of our school a place for safe passage and avoid unnecessary disturbances.

We will try to prove that we are possessed of good manners and that we can enjoy ourselves without rough-house tactics.

We will hold our school in high esteem.

Prepared by —

THE STUDENT COUNCIL

Kappa Kappa Rho
Manus Classica
Gamma Delta
Record Staff
Music Club
Hi - Y - Ette
Pep Club
Debate
Forum
Band

C
L
U
B
S

Hi - Y
Choir
R Club
G. A. A.
Rifle Club
Aristotelian
Sports Club
Sigma Sigma
Baton Twirlers
Student Council

STUDENT COUNCIL



First row—Gaylord DeVaul, Darrei Beede, Orville Kolsto, Dick Anderson.
Second row—Don Lundquist, David Franks, Geraldine Allen, Peggy Thorpe, Mary Henningsen, Jo Ann Gerber, Mary Louise Harmon, Enid Miner, Rita Gallagher, Gordon Baker, Fred Andrews.
Third row—Bob Dvorak, Bill Kollman, David Birch, Richard Marks, Bob Bednasek, Emory Sample, Kenneth Marsh, Jim Ensign, Don Kuhn, Bob Madeson.

—: AUTOGRAPHS :—

Governing the student-body, is a council, consisting of delegates elected by members of each home room.

The main item on the Student council's list of activities and duties, is in the setting up, selling, and dispersing of funds of the stamp card sale. This task is usually completed by the end of the first semester.

Arrangements for, and conduction of the annual Pep parade is also a main event of the Student council calendar.

Securing a program, in the form of a pay assembly, quite often is put through by the student council, also.

Mr. Fred Kluss acts as faculty advisor for this group. Parties, planned throughout the year, usually include the alternates as guests.

RECORD STAFF



First row—Louis Yeakle, Merle Eiben, Bob Carpenter, Darwin Whitney.
Second row—Clifford Melberg, June Smith, Helen Donisthorpe, Helen Green, Mildred Krogh,
Carol Keyes, Betty Lucas, Elaine Anderson, Evelyn Geiger, Rita Gallagher, Douglas
Beauchamp.
Third row—Evelyne Greenberg, Hildred Miller, Jean Horak, Beverly Bain, Mr. Brown, Mr.
Mau, Roy Hauser, Maurice Rapaport, Betty Burke, Ellen Davis, Mary Louise Harmon.

—: AUTOGRAPHS :—

Keeping the students entertained and informed, as to all the events of the clubs and other activities in, and related to the school is the Record's job.

Among achievements, this year, of the personnel of the Record staff, not to be overlooked, are the winning of awards by Mary Louise Harmon and Elaine Anderson, at a state high school journalism contest.

The Roosevelt Record is still the only printed high school newspaper in Cedar Rapids schools. It is printed in the Roosevelt printshop, and is a member of Quill and Scroll. For excellence in journalism, Record staff members are given membership in this international honorary society for high school journalists.

Mr. Donald E. Brown is the editorial advisor, with Mr. Chester Mau supervising the printshop.

CHOIR



First row—Rose Mary Mann, Marcella Chitty, Ethel Bell, Fern Bryant, Freda Sheronick, Peggy Thorpe, Velma Cook, Shirley McConnell, Lois Detlefsen, Mary Lou Blaylock, Donna Mae Sponar.
 Second row—Doris Sears, Martha Miller, Geraldine Mitchell, Virginia Donahugh, Vivian Wilson, Miss Porter, Dorothy Hillmer, Anna Belle Ramaker, Mary Ellen Dennis, Juanita Day, Enid Miner, Phyllis Johnson.
 Third row—Nicky Kint, Don Washburn, Lee Arthur Ilten, Fred Bissell, Jack Carney, Jim Black, Stan Davis, Bob Stoden, Frank Buxton, Dick Blattler, Maurice Rapoport, Melvin Stepanek.



First row—Martha Green, Ruth Collister, Thelma Wise, Mary Ann Meany, Kay Cusack, Carol Holmquist, Betty Janu, Pat Ruby, Kathleen Miller, Jean Gorman.
 Second row—Ann Buess, Doris Watson, Dorothy Davis, Joan Sebern, Geraldine Hendricks, Janice Ecklor, Anna Mae Manwiller, Ann Robertson, Helen Robinson, Eleanor Kacer.
 Third row—Bob Andros, George Blake, Bastian Kruidenier, Earl Moeller, Warren Johnson, Larew Collister.

DEBATE



First row—Larew Collister, Keith Listebarger, Patricia Savage, Donald Palmer, Robert Madison.
Second row—Bastian Kruidenier, George Elliot, Mr. Burmeister, Rollin Oswald.

—: AUTOGRAPHS :—

"Resolved, That every able-bodied male citizen should have one year of compulsory military training before attaining the present draft age."

This was the topic argued pro and con by the debate class, under the direction of Mr. H. K. Burmeister. This class was the first to take debate as a full credit course.

Competition, this year, was seen in the teams of Monticello and East and West Waterloo, when the Roosevelt teams journeyed to these towns in quest of battlefields to use in waging their verbal wars.

High school debating has its value in promoting quick and intelligent thinking, as well as self-assurance in a student, when speaking before a crowd. This year there were four members on the affirmative, and four on the negative side of the question.

HI-Y



First row—Ron-Id Hedin, Lewis Newman, Larew Collister, Dick Lewis, Gaylord DeVaul, Lyman Euken, Bob Madeson.
Second row—Earl Moeller, Bill Kollman, George Triebel, Bob Carpenter, John Sebern, Don Lundquist, John Fattig, Darrel Beede, Howard Moeller, Charles Miller.
Third row—David Birch, Richard Buffington, Doug Beauchamp, George Youtzy, Rollin Oswald, Dick Harrington, Don Hillmer, Bob Bednasek, John Hedin, Dayton McMillan.

—: AUTOGRAPHS :—

Activities of the Hi-Y boys reveal a definitely varied program. This organization was responsible for, or has taken part in the Hi-Y Assembly Room of the Air, Coe Vespers, Hi-Y conferences, camping trips, Christmas baskets for the needy, and the production of the comedy, "The Dutch Detective."

Nationally, Hi-Y was organized in 1887. The Roosevelt group had its beginning at Grant, and is, at present, under the sponsorship of Mr. H. M. Benninghoff.

The purpose of this club is to create, maintain, and extend throughout the school and community high standards of Christian character. It has as its platform: Clean living, Clean speech, Clean sports.

HI - Y - ETTIE



First row—Doris Petro, Shirley Hilborn, Joan Rundall, Mildred Krogh, Mary Scherrebeck, Hildred Miller, Anne Robertson, Carol Holmquist, Lucille Phelps.
Second row—Norene Hilland, Alice Krupicka, Annabel Speas, Pearl Overstreet, Donna Spornar, Evelyn Geiger, JoAnn Gerber, Naida Williams, Ellen Devis, Shirley McConnell, Peggy Thorpe, Alice Hughes.
Third row—Helen Robertson, Doris Watson, Frieda Sheronick, Virginia Vanous (deceased), Velma Cook, Jasiel Andrews, Gerry Allen, Kathleen Miller, Arlene Allen, Jean Gorman, Helen Donisthorpe, Helen Heald, Marian Nosek, Jeanne Skvor.
Fourth row—Kay Cusack, Amy Hamad, Doris Sears, Bertha Wieneke, Ruth Cline, Yvonne Riggs, Doralee Skerik, Mary Ellen Dennis, Eileen Plank, Rosemary Knott, Joanne Grissell, Joy May, Annabelle Raymaker, Betty Burke, Genice Wolfe, Gloria Mittan, Loretta Kepler, Netah Shelton, Miss Bryan.
Fifth row—Kay Brown, Patricia Methaven, Mary Munden, Betty Stepanek, Connie Graves, Lucille Kemme, Pat Savage, Evelyn Comried, Helen Harrington, Vivian Wilson, Marie Jensen, Pricilla McNeal, Marilyn Morehouse, Betty Poole, Pat Ruby, Pat Slade, Norma Marchel, Darlene Mathews, Joanne Walters.

—: AUTOGRAPHS :—

Hi-Y-Ette is a branch of the Girl Reserves, who are internationally sponsored by the Y. W. C. A. It is the Cedar Rapids senior high school Girl Reserves, who go by the name of Hi-Y-Ettes.

This year, the Red Cross drive at Roosevelt was conducted by the Hi-Y-Ettes, with Mary Munden at the head of this committee.

Five delegates were sent to the Girl Reserve Area conference at Cedar Falls, last fall, by the RHS group. The delegates, who are also the club's officers, were: Hildred Ann Miller, Mildred Krogh, Anne Robertson, Carol Holmquist, and Mary Scherrebeck.

A "Dogpatch party," and hostessing at Hi-Y-Ette fun-nights were among the social functions of the girls this past year. Miss Katherine Bryan is the sponsor of the organization at this school.

FORUM CLUB



First row—Mary Alice Whitehair, Peggy Thorpe, Velma Cook, Jasiel Andrews, Betty Lou Bean, Beverly Bain, Dorothy Getlin, Darlene Mathews, Virginia Donahough, Netah Shelton, Shirley McConnell.
Second row—Connie Graves, Lucille Phelps, Anna Belle Speas, Betty Dahl, Bruce Claffin, Clifford Leichsenring, Nicky Kint, Ialene Plank, Betty Burke, Alice Krupicka, Miss Paul.

—: AUTOGRAPHS :—

Forum club has been under the sponsorship of Miss Mary Paul and Mr. Daryl Pendergraft since it was started in 1939. It has become a leading group for the promotion of interests in public and personal problems. Open discussion on topics of current interests allows for individual broadening.

Speakers from the outside are occasionally invited to aid and direct discussions, about subjects on which they are well-based. Joint meetings of Sigma Sigma and Forum have often been held.

The Forum club is one of the few at Roosevelt to have no specific requirements for joining. Membership is extended to any senior high student, who has a desire to enter a discussion group. Incidentally, this club is also one of the few to have no annual payment of dues.

SIGMA SIGMA



First row—Echel Linkletter, Joy May, Hildred Miller, Marvel Dulin, Ellen Davis, Mrs. Torstenson, Loraine Jones, Jean Horak, Evelyne Greenberg, Fern Bryant, Rita Gallagher.
Second row—Mildred Krogh, Mary Bingham, Mary Louise Harmon, Patricia Savage, Julianne Freund, Bob Carpenter, Richard Marks, Roy Hauser, Bob Bednasek, Doug Beauchamp, Elaine Anderson, Phyllis Kohl, Lorine Selzer, Lois Detlefsen.
Third row—Fred Andrews, Leo Meyers, Jr., Clifford Melberg, Dick Harrington, Howard Moeller, Bob Curtright, Bastian Kruidenier, Rollin Oswald, George Youtzy, Jim Ensign, George Triebel, Dayton McMillan, Charles Miller.

—: AUTOGRAPHS :—

Purposely started as a society of sociology, Sigma Sigma has grown into one of Roosevelt's largest groups, devoted to the study and discussion of current topics and events of interest.

Founded in 1935, Sigma Sigma's purpose throughout this time has been "to stimulate and to promote the interest of youth in problems of modern society."

Under the sponsorship of Mrs. Ellen Torstenson, intra-club programs are given, and guest speakers from outside afford the members an educational advantage.

Sigma Sigma has taken an interest in financially aiding in the club room fund. Membership is open to any eleventh and twelfth grade student, who is interested in the purpose of the club, and who has averaged a C. A thorough initiation is given at the beginning of each semester.

"R" CLUB



First row—Eddie Miller, Donald Washburn, Bob Kime, Bill Haddad, Coach Wolfe, Mart Thorson, Bob Gallagher, Fred Bissell, Tom Phelps.
Second row—John Fattig, Milvo Malley, John Sebern, Emory Sample, Jim Ensign, Bob Bednasek, Richard Marks.

—: AUTOGRAPHS :—

"R" Club is the boys' athletic club. Its purpose is to create and maintain interest in school athletic contests and to render service to the school and community. Eligibility lies in receiving a major C. R. letter, and a formal initiation is held at the beginning of each semester.

Each year the Glenn Williams Memorial Award is presented by the "R" Club to the most deserving graduate.

The organization was founded in 1935, and is now under the advisorship of Coach Don Wolfe.

Student help is provided at various athletic contests, and programs, and drives intended to create the interest in athletics throughout the school, have been undertaken by this club.

G. A. A.



First row—Elvanne Kriz, Ardith Ebsen, Marjorie Ferguson, Pat Savage, Ann Robertson, Dorothee Hillmer, Marie Hansen.
Second row—Mary Munden, Rose Mary Knott, Julianne Freund, Rita Hermesen, Helen Harrington, Kay Brown.

—: AUTOGRAPHS :—

Lassies, alone, are permitted to join the Girls athletic association, or Gamma Alpha Delta. Even then, she must have earned a total of 500 points for each semester she wishes to remain in the club.

A letter is also given to each girl for earning these points, according to the number of times she has reached this attainment.

1924 saw the founding of G.A.A., and its purpose, which is furthering health-building sports for girls. Miss Ruth Zieke, better known as "Teach," is the sponsor of the club.

A charity project is carried on by the girls each year. This is usually the making of money by selling some self-made novelties.

A weekend at the Palisades, Play-days, and parties all go to making G.A.A. a lot of fun.

SPORTS CLUB



First row—John Fattig, Frances Richardson, Chester Smith, Vernon Petranek, Bastian Kruidenier, Bob Gallagher, Leon Greenberg, Bill Cox, Milford Smith, Tom Gallagher.
Second row—Donald Palmer, Kenneth Little, Donald Washburn, Chuck Kemme, Don Kuhn, Jack Carney, Mr. Pendergraft, Bill Taylor, Bob Kime, Bob Moneypenney, Bill Jensen, Bud Murphy, Jerome Greenberg.
Third row—Regis Mooney, George Mally, Bud Fuller, Bob Arp, Thor Norland, Fred Bissell, Arthur Clark, John Sebern, Bob Bednasek, Bob Clark, Dale Thompson, Gerald Trueblood.

—: AUTOGRAPHS :—

Girls excluded, that's it, a group devoted exclusively to boys is the Sports Club, sponsored by Mr. Daryl Pendergraft.

The Sports Club is a comparatively new club at Roosevelt, having had its first meetings in 1939.

Originally, the club was for the benefit of developing the interests of those, who did not take part in the major sports of Roosevelt, and who had a liking for other sports.

Sportsnight, last year, brought fame to the Sports club, and it is planned to be an annual event. Proceeds of the performance are for benefit causes.

Movies and speakers go to make up the club's programs, which, quite naturally, concern the subject of sports.

PEP CLUB



First row—Betty Janu, Carol Ann Holmquist, Kay Cusack, Julianne Freund, Geraldine Allen, Merle Eiben, Nicky Kint, Arlene Allen, Patricia Savage, Kay Miller, Doris Sears, Shirley McDonnell, Joyce Richardson.

Second row—Jeri Corman, Mary Munden, Loretta Kepler, Alice Krupicka, Lucille Phelps, Eleanor Heald, Helen Donisthorpe, Mary Scherrebeck, Lois McDonald, Beverly McCune, Marie Hansen, Ardis Morrison, Alice Hughes, Jean Probst, Noreen Hiland, Martha Miller.

Third row—Phyllis Marchal, Jerry Henrichs, Pat Ruby, Ruth Kline, Arlene Thomas, Dorothy Getlin, Marjorie Ferguson, Norma Marchal, Joan Walters, Joan Grissel, Rosemary Knott, Donna Mae Faulkner, Betty Lucas, Anne Robertson, Vivian Wilson, Helen Harrington.

Fourth row—Dorothea Hillmer, Carol Keyes, Madelyn Waddle, Mary Kluber, Rita Hermesen, Harriet Satterly, Ruth Johnson, Elsie Anderson, Rita Gallagher, Mildred Krogh, Evelyn Geiger, Joan Gerber, Naida Williams, Dorothy Davis, Dorothy Cohl, Thelma Wise, Fern Bryant, Doris Canterbury.

—: AUTOGRAPHS :—

1941 and 1942 make up the first year for the Pep club. It was organized, last fall, to keep up the spirits, at the athletic functions, by keeping up the yells.

Pep club is composed of a group of girls, who sit in a designated section of the bleachers at each game.

New yells are worked out at the club's Friday morning meetings, before each game. Yells, with placards, and drill squads have added to the color of the audience at the games.

Pep club has also put on most of the pep assemblies, of this past year.

Miss Ruth Ziecke is the advisor.

MANUS CLASSICA



First row—Anna Belle Ramaker, Fern Bryant, William Willard, Ronald Hedin, Donald Lundquist, Richard Buffington, Bill Sanders, Audrey Ballou, Betty VanSickle.
Second row—Pat Ruby, Betty Stepanek, Doris Sears, Arlene Churchill, Joan Garrett, Ruth Collister, Martha Green, Joanne Gensicke, Darlene Farnham, Arlene Allen, Geraldine Allen.
Third row—Robert Andrews, Elvanne Kriz, Ardith Ebsen, Rosemary Mann, Elaine Anderson, Beverly Bain, Betty Hinton, Miss Chambers, Joan Grissell, Maxine West, Betty Dahl, Miriam Morr, Carol Holmquist, David Birch.

—: AUTOGRAPHS :—

Latin club of the school is Manus Classica, which has as its sponsor, Miss Jessie Chambers.

The club's programs are in keeping with the purpose of the club. It follows: To further the student classical knowledge and to acquaint them with facts of current classical interest. The meeting dates come once a month.

Manus Classica is one of the oldest of the clubs at Roosevelt, since it was formed in 1925 at Grant high school.

The club has some of the best initiation rituals of the school, as well as a big Christmas party.

A Latin award is presented each year, to the senior who has made the outstanding record, in studying four years of Latin.

KAPPA KAPPA RHO



First row—Mary Henningsen, Joan Rundall, Martha Miller, Jean Kelley, Mary Ann Meaney, Maxine Parks, Jasiel Andrews.
Second row—Pricilla McNeel, Amy Hamad, Freda Sheronick, Doris Watson, Miss Williams, Dorothy Dewald, Marzella Chitty, Yvonne Riggs, Eleanor Kacer, Virginia Vanous (deceased), Kay Cusack.
Third row—Betty Lucas, Maxine Smith, Agnes Wise, Joan Walters, Joyce Richardson, Rita May Hermsen, Vivian Wilson, Mary Kluber, Dona May Faulkner, Pearl Overstreet, Mildred Navratil, Garner Franks.

—: AUTOGRAPHS :—

Commercial club, or to have its real name, Kappa Kappa Rho, was organized in 1935, for the purpose, as stated in the constitution, of studying business problems and interests; to broaden the pupil's outlook on business life and to bring about a fellowship among commercial students.

Various business personages are guest speakers each semester, so that they may give their slants and views on the business world.

Programs, stressing personality and character traits, are among those presented by the members themselves.

Each semester an initiation is held for new members, and one other party is given during that period by the club, which is sponsored by Miss Jeanette Williams.

GAMMA DELTA



First row—Mary Henningsen, Jean Tremain, Leo Meyers, Jr., Eddie Miller, Albert Thompson, Lyman Euken, Bill McManus, Donna Sponar, Marie Sutcliffe.
Second row—Mary Scherrebeck, Joy May, Lorraine Selzer, Mildred Krogh, Naida Williams, Miss Sheets, Mary Louise Harmon, Fern Bryant, Helen Williams, Barbara Johnson, Betty Sheets, Helen Huff.
Third row—Charles Miller, Jack Carney, Bill Cox, Bill Taylor, Douglas Beauchamp, Betty Homer, George Youtzy, Bob Harger, David Mitchell, Don Lundquist, Harold Barnes.

—: AUTOGRAPHS :—

Gamma Delta is the school's dramatic club. It endeavors to create an intelligent and worth while interest in the standards of dramatics.

First organized at Grant high school on November 19, 1920, Gamma Delta has carried on activities at Roosevelt by sponsoring assembly programs and the annual Gamma Delta plays.

An accumulation of three points, either by working on casts or crews, is necessary for membership. Persons obtaining fifteen or more points, through their high school careers, are presented a Gamma Delta award in their senior year.

Friendly, thrilly, and delicious, is the annual formal banquet, held in the spring, by Gamma Delta. Miss Roberta Dinwiddie Sheets is sponsor.

ARISTOTELIAN CHAPTER
— of the —
NATIONAL HONOR SOCIETY



First row—Lorine Selzer, Mary Louise Harmon, Elvanne Kriz, Evelyne Greenberg, Charles Miller, Bob Carpenter, Don Lundquist, Fern Bryant, Ellen Marie Davis, Joan Gerber, Mildred Krogh.
Second row—Rita Gallagher, Loraine Jones, Marvel Dulin, Fred Andrews, Howard Moeller, Mr. Pattee, Amos Kent, Richard Marks, Elaine Anderson, Jean Marie Horak, Marilyn Morehouse.

—: AUTOGRAPHS :—

Scholarship, leadership, character, and service are the distinctions which mark the members of the Aristotelian chapter of the National Honor Society.

First chartered at Grant high school, Aristotelian was split between Roosevelt and Wilson, when the present system of six year high schools went into effect. Each school, of course, has its own particular club.

Each semester, this recognition is given to a set percentage of the 11A, 12B, and 12A students, who are in the upper twenty-five per cent of their respective classes.

A formal induction tea, honoring the new members, is given each semester in Sagamore Hall, the parents of the inductees being invited. Each June, a picnic is held, to which any Aristotelian alumnus can come. Mr. S. M. Pattee is the Roosevelt sponsor.

RIFLE CLUB



First row—John Sweeting, Bob Hejkal, Tom Sturgeon, Louie Newman, Franklin Main, Ray Fields, Edwin Kouba.
Second row—Kenneth Buresh, Rex Cline, Louis Brown, Loren Worley, Chuck Kemme, Regis Mooney, George Blake, George Haddy, Dick Lewis.
Third row—Melvin Stepanek, Don Vorel, Wallace Costek, Kenneth Marsh, Richard Whitney, Henry Stark, Don Hillmer, Bill Corbit, Keith Listebarger, Richard Funk.

—: AUTOGRAPHS :—

The desire to promote interest in the use of fire arms, and to cultivate clean sportsmanship and clean minds is the ideal of the Rifle club.

Roosevelt's sharpshooters are a member of the National Rifle Association, and have competed in several contests in Cedar Rapids and surrounding towns.

Medals are awarded accordingly with the student's ability as a marksman.

Until recently, the government had been furnishing a supply of ammunition, but because of the war, the club, now, has to seek means of financing this themselves or be forced to disband.

However, the group was allowed to keep two Springfield rifles, lent to them by the government.

Mr. Lloyd George is the sponsor of the group.

MUSIC CLUB



First row—Lyman Euken, Chester Ehrenberger, Abdallah Igram, Bob Madeson.
Second row—Bob Curttright, Lois Hollan, Loraine Jones, Wanda Snell, Janice Ecklor, Betty Hinton, Alice Niebuhur, Doris Newman, Gertrude Baldwin, Ann Buess, Ruth Collister, Charles Decker.
Third row—Richard Dice, David Birch, Bill Kollman, Keith Listebarger, Richard Buffington, Richard Whitney, Amos Kent, Mr. Vesely, Bob Harger, George Triebel, John Janzan.

—: AUTOGRAPHS :—

The Music club has as its purpose, the extension, throughout the school, of active and intelligent interest in music. For its members, it opens the field of exchanging of ideas and information, and also proves a basis for the teaching, that band and orchestra should be taken seriously.

Requirements necessitate that a student must prove his own eligibility.

Awards, in the form of monograms, are given to persons earning them by outstanding and distinctive work in band, orchestra or contests.

Organized in 1935 under the direction and sponsorship of Mr. William Vesely, the Music club's activities are those of sponsoring the Marching band, the annual spring concert and many social events throughout the year, including a dance, held last fall, for the band and the Baton Twirlers.

BATON TWIRLERS



First row—Nellie Noble, Betty Watt, Carol Holmquist, Anne Robertson, Rita Hermson, Marian Nosek, Regina Blake, Mildred Krogh, Pat Ziegler, Mary Munden, leader.
Second row—Shirly Hilborn, Jean Gorman, Joan Sebern, Betty Janu, Mary Alice Whitehair, Lillie Dean Jensen, Marie Jensen, Phyllis Marchal.

—: AUTOGRAPHS :—

Red sweaters, and short, white pleated skirts, strutting down the way, means none other than the Roosevelt Baton Twirlers.

The idea of twirlers in a group first came to Roosevelt in 1939, and they've been having a marching unit ever since.

The girls keep step to the time of the Marching band, but otherwise than that they are a separate unit.

Several of the girls have gone through their routine at a convention, and at an American Legion meeting, this past year, as well as their performances at the home and Clinton football games, and at the basketball games this winter.

Making fame in another way too, the majorettes, had their picture in a local newspaper this year.

Baton Twirlers are automatically members of the Pep Club, if they are in senior high.

BAND



First row—Helen Williams, Marvin Sedlecek, Cliff Morrison, Dick Kenny, Lyman Euken, Betty Hinton, Drum Major.
Second row—Alice Niebuhr, Beverly Meutzel, Paul Ecklor, Keith Lisreberger, Bill Pfeffer, Betty Nichols, Jean Brown, Beverly Larson, Mary Lou Schantz, Ellyn Bell, Elaine Norman, Richard Whitney.
Third row—Janice Ecklor, Betty Anderson, Lois Hollan, Joyce Bruce, Joan Velcko, Geneice Wolfe, Bob Madeson, Robert Davis, Ann Buess, Lee Bailey.
Fourth row—Ruth Collister, Chester Ehrenberger, David Birch, Bill Kohlman, Tom Harmon, Nadine Walters, Lillian Hanzlik, Abdullah Igram, Louis Newman, Jane Bell, Calvin Gross.
Fifth row—Charles Decker, Wanda Snell, George Triebel, Paul Valliere, George Blake, Elwin Bell, Jim Matejka, Donald Johanos, Amos Kent.

—: AUTOGRAPHS :—

The Roosevelt high school Marching band, or Pep band, as it is sometimes called, is under the directorship of Mr. William Vesely, and its activities are sponsored mainly by the Music club.

Playing and marching at all of the football games, the band also performs at the basketball games, as well as for the Pep parades. With Betty Hinton as drum majorette for the past year, the band has also played over the "Assembly Room of the Air," and for a meeting of the American Legion.

Each year, the band makes one out of town trip to perform at an away from home football game. This year, it was to Clinton.

Last fall, the Music club sponsored a dance, to which, all the members of the band were invited.

SNAPS

1. Why we went to Roosevelt.
2. Where's the bars?
3. Are they kidding?
4. Ipana — the smile of ??
5. Dale LeMar.
6. Cheerleaders.
7. Grin — and bear it.
8. That's all right, our's is paid for.
9. Fit to kill.
10. Craig Satterly.
11. Dorothy Freeman.
12. Sadie.
13. Lois, trying to look purry.
14. Nice view?
15. Oh, joy!!
16. Studying? Not actually!
17. Oh boy! Eats!!
18. Ducky.
19. Stan.
20. Jack-pot!
21. Lookin' for someone?
22. Could it be Rollin'?
23. Leg art!!!
24. I read a book once.
25. Well??
26. In a hurry?
27. Jerome Greenberg.
28. Sweet miseries of life.
29. Let's have chow!
30. Grimey.
31. Woman of leisure.
32. Professor Einstein Cline.
33. Look who's blowin'.
34. Abbie Igram.
35. Iona Seltrecht and Harriet Murdock.
36. Prom props.

SHOTS

1. Bookworm.
2. Doris Anderson and Ardith Ebsen.
3. Lorma Yardly.
4. Maurice Rapaport.
5. I didn't did it.
6. What's cookin'?
7. Jerry Trusblood.
8. Irene Kroupa.
9. Look who's laughing!
10. Marjorie Ferguson.
11. Interesting research!
12. Happy little morons.
13. Elvanne.
14. God's gift to woman. Ha!!
15. Oh, golly!
16. Looking down on 21.
17. Dick Gerber.
18. She'd rather smoke here than hereafter.
19. Pleasant —
20. Copying, huh?
21. Found! Inquire at Annual office.
22. Why Cedar Rapids needs a police force.
23. Henry Stark.
24. Maryanne Meany.
25. Isolationist.
26. Pious little things, what?
27. Little bit of heaven.
28. Time was —
29. Bench warmer.
30. What's her nickname?
31. Same old story.
32. Evelyn Greenberg.
33. Cutie Keyes.
34. Missing link.
35. Lonely, down there, Bob?



Appreciation is extended to Douglas Shaheen and Milvoy Mally for assisting the art staff, and Maurice Rapaport, the print staff.