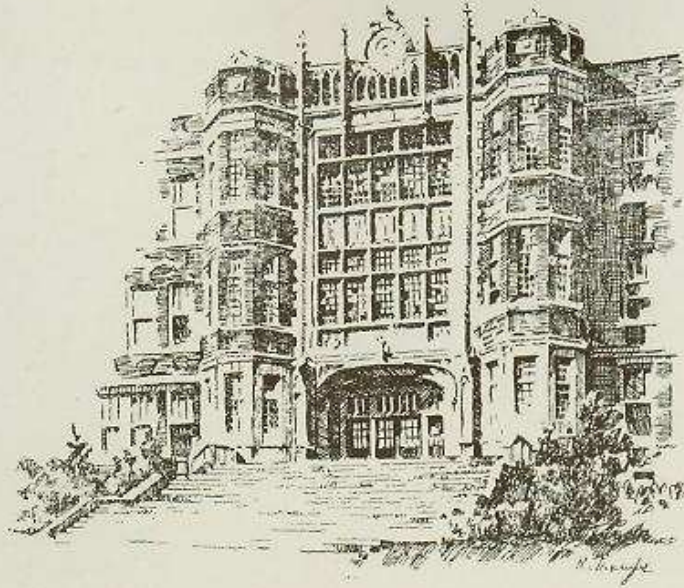


ROUNDUP



1945

ROUNDUP



Edited by
Senior Class of Roosevelt High School
Cedar Rapids
Iowa

ANNUAL STAFF



Back row: Bob Verba, Al Schamberger, Chuck Campbell, Tom Chester, George McFarridge, Duane DeLong, Everett King, Bob Goodrow, Evelyn Berry.
Middle row: Doris Olyer, Pat Klier, Mariellen Kraus.
Front row: Elaine Norman, Ray Petzelka, Peggy Lake, Mary Lou Vosmek, Joanne Sebern, Betty Trimble.

ANNUAL STAFF

Editors-in-Chief —	
January	Marilou Vosmek
June	Margaret Lake
Associates —	
January	Mariellen Kraus
June	Charles Campbell
Business Managers —	
January	Joanne Sebern
June	Ray Petrzeika
Picture Editors —	
January	Everett King
June	Patricia Klier
Art Editors —	
January	Bob Goodrow Tom Chester
June	Elaine Norman Bob Vrba
Typists —	
January	Doris Olver Nadine Walters
June	Betty Trimble Evelyn Berry
Printers-in-Chief —	
January	George McFatrige
June	Albert Schamberger
Advisory Staff	Mr. Owen Mr. Mau Miss Danielson

The Annual Staff wishes to thank the following for their work on the 1945 Roosevelt Roundup:

The Print Shop under the supervision of Mr. Mau

The Art Department under the supervision of Miss Danielson

Sara and Rosella

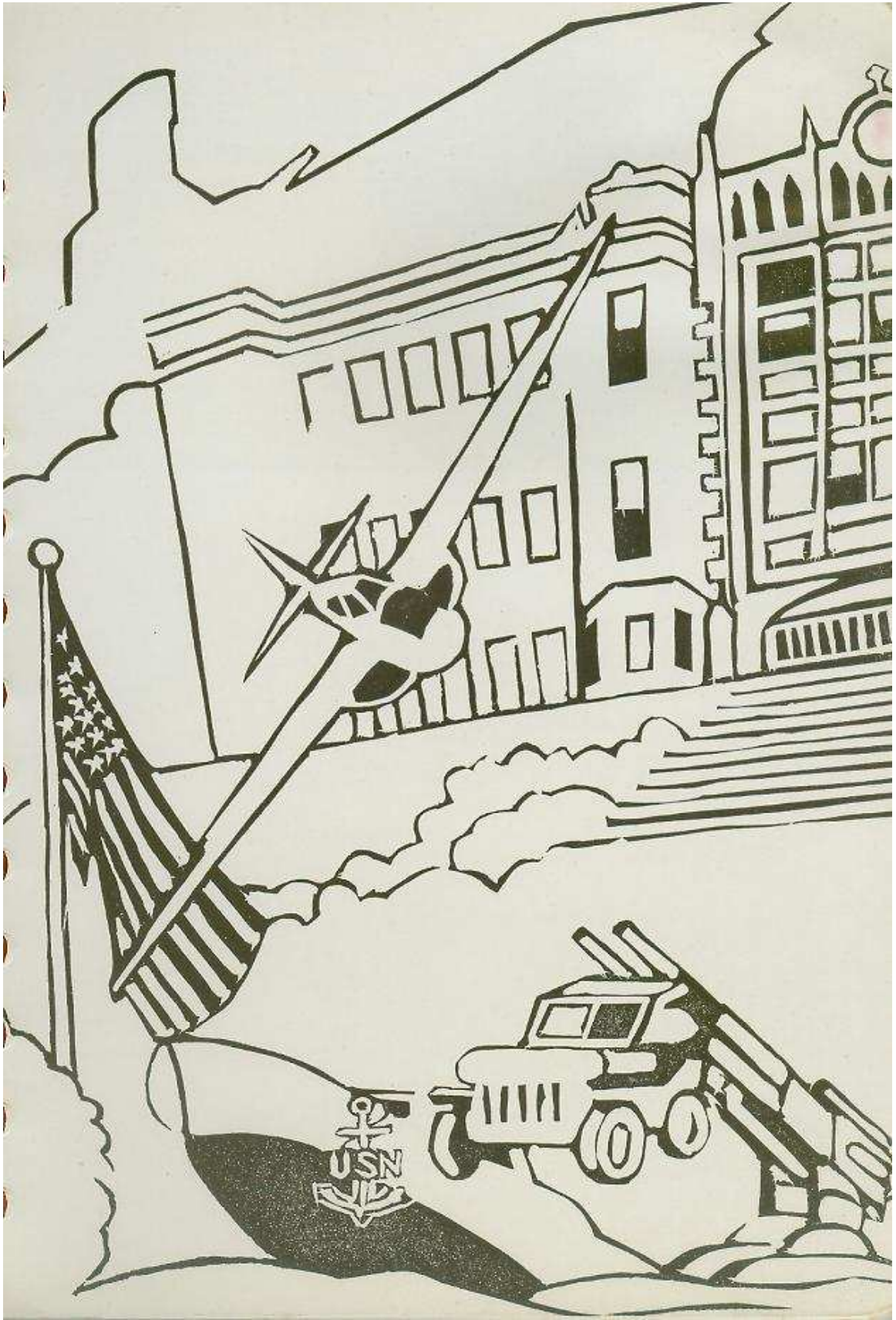
Miss Walker

Mr. Owen

—: OPPORTUNITIES :—

It all depends upon what we believe the purpose of life to be. If we think the goal of living is to be happy, then we are pretty likely to be disappointed. But if we have decided that life is an opportunity to grow big and fine, then every obstacle is an advantage because it has a tendency to incite us to greater effort. It has been said with considerable truth that "nothing ever grows where the sun always shines." That is another way of saying that misfortunes serve their function in life, too. Blessed is the man who has learned how to turn a blow into a boost, and a reverse into a problem to be solved. Every pain has its values.

—Robert Louis Stevenson.









SERVICE MEN'S PAGE

- | | |
|--------------------------------|---------------------------|
| 1. Lt. Roy Heuser | 22. Pvt. Jerome Greenberg |
| 2. Lt. Clarence A. Paulson | 23. S 2/c Lyman Euken |
| 3. Lt. Robert Carpenter | 24. Pvt. Eugene Speraw |
| 4. Sgt. Richard Haberle | 25. S 2/c Bill Willert |
| 5. Sgt. Gerald Trueblood | 26. AMM 1/c Leonard Smith |
| 6. Pvt. Charles Young | 27. Cpl. Dick Lewis |
| 7. Pvt. Marion Lawrence | 28. Seaman Bob Bain |
| 8. A/S Joe Fiala | 29. S 1/c Clair Berry |
| 9. Lt. Don Harmon | 30. Ph. M 3/c Jim Curry |
| 10. Merchant Marine John Hedin | 31. Lt. Richard Marks |
| 11. Lt. Leonard Fuller | 32. Seaman Jack Little |
| 12. Lt. Harold Andrews | 33. Pvt. Donald Hillmer |
| 13. Fl/c Charles Cook | 34. Lt. Wilber Collister |
| 14. T/Sgt. Melvin Allen | 35. Lt. George Blake |
| 15. A/S Gene Oswald | 36. Pfc. Robert Harger |
| 16. S 2/C Leland Dankert | 37. S 2/c Cornelius Cox |
| 17. A BM 1/C Ted Stevenson | 38. Pvt. Charles Kocs |
| 18. S 1/c Wayne Welcher | 39. S 2/c Albert Mastin |
| 19. A/S Dayton McMillan | 40. Lt. Leo Shulgin |
| 20. Pvt. Leo Martin | 41. A/S Charles Johnson |
| 21. 2M 2/C Howard Sawyer | 42. Pvt. Bruce Lane |

— No. 2 —

- | | |
|-----------------------------|--------------------------|
| 1. Pvt. Kenny Cooper | 19. Pvt. Dick Zobl |
| 2. S 1/c David Siechert | 20. TM2/c Bill Taylor |
| 3. Lt. Lois Benson | 21. Sgt. John Pealer |
| 4. Pfc. Wendell Rainbolt | 22. S 2/c Sol Maikon |
| 5. S 1/c Tommy Wingfield | 23. AC Bob Dvorak |
| 6. T/Sgt. Jerome Nixon | 24. Sgt. Eddie Miller |
| 7. S 2/c Bill Willert | 25. Ensign Lyall Taylor |
| 8. S 2/c Norman Rowray | 26. S 2/c Don Taylor |
| 9. S/Sgt. Guy E. Curran | 27. EM3/c Robert Thorson |
| 10. AS Jack Lewis | 28. Sgt. Lewis Baker |
| Lt. Jerry Clift | 29. S 2/c Joe Cmelik |
| 11. S 2/c Richard Whitney | 30. C/M Ronald Hedin |
| 12. Capt. Harry Burmeister | 31. Pvt. Ralph High |
| 13. Pvt. Paul Valliere | 32. Lt. Eddie Wharton |
| 14. Pvt. Bill Kollman | 33. Sgt. Dale Hall |
| 15. Sgt. Dale Kiecksee | 34. Cpl. Lee Wagner |
| 16. Pfc. Jim Black | 35. S 2/c Dick Gard |
| 17. Pvt. Robert Bramsen | 36. Pvt. George Belin |
| 18. Ensign Monte Linkletter | S 2/c Warren Johnson |

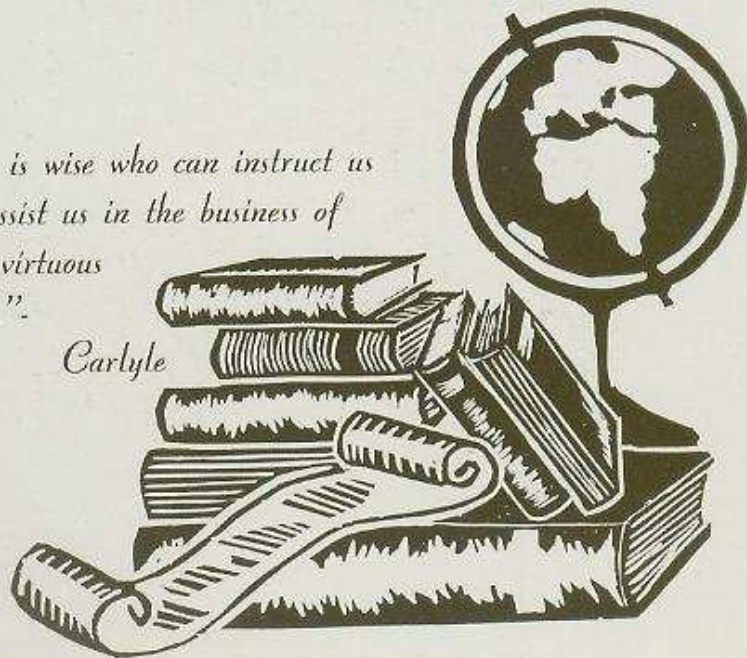
— No. 3 —

- | | |
|------------------------------|-----------------------------|
| 1. Lt. Janice Houghom | 15. 1st Lt. Dick Morehouse |
| 2. Corporal Kenny Marsh | 16. S 2/c Dick McIntyre |
| 3. Sgt. Robert Burk | 17. S 2/c Ray Langridge |
| 4. AS Alex Teslow | 18. Sgt. Clifford Taylor |
| 5. Pfc. Everette Burk | 19. S 2/c George Pealer |
| 6. Corp. Robert Nemecek | 20. S 2/c George McFarridge |
| Pvt. Richard Nemecek | 21. Pfc. Stanley Davis |
| 7. Lt. Jack Linkletter | 22. S 2/c Leslie Stumpff |
| 8. Pvt. Leland Miller | 23. S 1/c Bob Madeson |
| 9. AS Ed. Moneypenny | 24. S 1/c Norman Smith |
| AS Bob Moneypenny | 25. S 1/c Kenneth Little |
| 10. Ph.M.3/c Gaylor DeVaul | 26. Sgt. Amos Kent |
| 11. Staff Sgt. Kenneth Euken | 27. Corporal Don Washburn |
| 12. Pvt. Frank Podzimek | 28. Ensign Bob Bednasek |
| 13. Pvt. Robert Boxwell | 29. Pvt. Robert Dresher |
| 14. S 1/c Richard Dice | |



*"He is wise who can instruct us
and assist us in the business of
daily virtuous
living."*

Carlyle





*Fred J. Kluss
Sara Slutsky Katz
Sam Cooper
G. Esther Chapin
Ross Miller
Arvilla Mae Chick
William Owen
Margaret Porter
Jeannette Williams*



*Theodore Anderson
Jessie Chambers
Clarence Vermisse
Jane Ziadema
Harold Myron
Margaret Danielson
S. M. Patten
Ellen Torstenson
Lorene Chebah*

TEACHING PERSONNEL

Principal

Fred J. Kluss

Dean of Girls

Addie Zika

Art

Margaret Danielson

Commercial

Anna Grissel

Jeanette Williams

Ross Miller

Science & Mathematics

Marna Shinn

Joseph Stolar

Harold Myron

Steven Pattee

William Owen

Litta Walker

Foreign Languages

Elizabeth Terrill

Jessie Chambers

Physical Education

Jane Zuidema

Stewart Cooper

Clem Carney

Secretary

Sara Slutzky Katz

Librarian

Nelle Martin

Home Economics

Berniece Moffit

Social Studies

Ellen Torstenson

Arvilla Mae Chick

Mary Paul

English & Journalism

Litta Walker

Jessie Chambers

Roberta D. Sheets

Esther Chapin

Elizabeth Terrill

Lorene Chehak

Music

Margaret Porter

William Vesely

Industrial Arts

Theodore Anderson

Chester Mau

Arthur Christophe

Clarence Eernesie

"SNAPS"



"SNAPS"

- | | |
|--|---|
| <p>1. Joyce Fryrear
Betty Watt
Doris Olver
Mary Lou Vosmek
Clydia Mae Davis</p> <p>2. Betty Watt
Everett King
Allen Parliament
Joanne Sebern
Jim Matejka</p> <p>3. Joanne Sebern</p> <p>4. Ronnie Larson
Alex Teslow
Don Larson
Everett King</p> <p>5. George McFatridge</p> <p>6. Betty Watt, speaker</p> <p>7. Mr. Kluss</p> <p>8. George Pealer</p> <p>9. Top row:
Betty Watt
Bob Goodrow
Joyce Fryrear</p> <p style="padding-left: 2em;">Bottom row:
Clydia Mae Davis
Bill Cohea
Doris Olver</p> <p>10. Everett King</p> <p>11. January grads.</p> <p>12. Allen Parliament
Carol Holton</p> <p>13. Joanne Sebern
Mary Lu Vosmek</p> <p>14. Caroline Solbrig
Jim Matejka
Mariellen Krause</p> <p>15. George McFatridge
George Pealer</p> <p>16. Joyce Fryrear
Mary Lu Vosmek
Betty Watt</p> | <p>17. Mariellen Krause
George Baba
Carolyn Solbrig</p> <p>18. Bill Cohea</p> <p>19. Boy's State Candidates</p> <p>20. Roberta Bukacek
Joyce Fryrear
Betty Watt</p> <p>21. Friendship</p> <p>22. Starry-eyed maid</p> <p>23. Duane DeLong
Mary Lu Vosmek
(Having fun)</p> <p>24. Compliments of Mr. Owen's Trig Class</p> <p>25. Joanne Sebern
Ray Petrzelka</p> <p>26. Oh Boy!</p> <p>27. Guess Who!</p> <p>28. Joyce Fryrear
Joe Cmelik
Betty Watt</p> <p>29. Joanne Sebern
Chuck Campbell
Ray Petrzelka</p> <p>30. Owen Hoadley
Janet Robertson
Nina Hibben
Carol Schmatt
Tom Harmon</p> <p>31. Football Champs</p> <p>32. Duane DeLong
Ray Petrzelka
(Two Buddies)</p> <p>33. George Pealer
Pat Klier
(Lovebirds)</p> <p>34. Joanne Sebern</p> <p>35. Mary Lu Vosmek</p> <p>36. Duane DeLong
Chuck Campbell
Joanne Sebern</p> <p>37. Jean Gardner
Eggie King</p> <p>38. "Swisher" Petrzelka</p> |
|--|---|

JANUARY SENIORS



Top row: Allen Parliament, Bob Goodrow, George Pealer, George McPartridge.
Third row: Ronnie Larson, George Baba, Tom Chester, Everett King, Alex Teslow, Don Larson.
Second row: Joyce Fryrear, Betty Warr, Mariellen Krause, Clydia Mae Davis, Carolyn Solbrig, Bill Cohen, Jim Matejka.
First row: Ruth Ann Lentz, Carol Holton, Joanne Sebern, Mary Lou Vosmek, Ellen Bell, Roberta Bukacek, Nadine Walters, Doris Olver.



JANUARY SENIORS



GEORGE BABA "Ali"
Football '41, '42, '43, '44; Hi-Y; Aristotelian; "R"
Club; Spanish Club.

ELLYN BELL "Twin"
Kappa Kappa Rho; Hi-Y-Ette; Music Club; Orches-
tra; Marching Band.



ROBERTA BUKACEK "Bobbie"
Kappa Kappa Rho; Hi-Y-Ette; Music Club; Orches-
tra.

THOMAS CHESTER "Tom"
Football '42, '43, '44; Track '42, '43; Hi-Y; "R"
Club; Yearbook Staff; Co-Art Editor; Spanish Club.



JOE CMELIK "Jose"
Basketball '43; Military Club; Spanish Club; Globe
Trotters; Victory Corps.

WILLIAM COHEA "Bill"
Debate '43, '44; Class President, Sophomore Year;
Thespians; Hi-Y, Chaplain, Vice-President; Record
Staff; Student Council; Choir; Globe Trotters.



CLYDIE MAE DAVIS "Clyde"
Hi-Y-Ette.

JOYCE FRYREAR "Joy"
Class Secretary-Treasurer, Senior Year; Hi-Y-Ette;
Choir.



RICHARD GARD "Dick"
Class President, Junior Year; Hi-Y, President; Rifle
Club; Student Council, President; Orchestra; Choir.

BOB GOODROW
Marching Band; Yearbook Staff.

JANUARY SENIORS

CAROL HOLTON

Class Vice-President, Junior Year; Kappa Kappa Rho; Hi-Y-Ette; T.M.T.M.



EVERETT L. KING JR.

"Eggie"

Class President, Senior Year; Hi-Y, Secretary; Yearbook Staff; Music Club, Corresponding Secretary, Vice-President, President; Orchestra; Choir; Marching Band.

MARIELLEN KRAUS

"Krausie"

Hi-Y-Ette; G. A. A.; Yearbook Staff; Record Staff; T.M.T.M.; Choir.



DONALD LARSON

RONALD LARSON



RUTH ANN LENTZ

"Rufus"

Kappa Kappa Rho; Hi-Y-Ette; Girls' Glee Club; Choir.

GEORGE McFATRIDGE

"McFat"

Football '41, '42, '43, '44; Basketball '43, '44; Track '44; "R" Club; Yearbook Staff; Record Staff; Rifle Club, Secretary-Treasurer; Student Council, Vice-President; Sports Club; Duodecim.



SOL MAIKON

Hi-Y; Music Club, Treasurer; Student Council; Orchestra; Duodecim, Vice-President; Globe Trotters, Vice-President; Victory Corps.

JAMES MATEJKA

"Jim"

Basketball '40, '41, '42; Music Club, President, Secretary-Treasurer; Student Council; Orchestra; Marching Band.



DORIS OLVER

"Dorie"

Kappa Kappa Rho; Yearbook Staff.

JANUARY SENIORS



ALLEN PARLIAMENT "Al"
School Dramatics '43; Class Vice-President, Senior Year; Choir; Globe Trotters.

GEORGE PEALER "Herby"
Football '42; Basketball '41, '42, '43, '44; Track '43; Hi-Y; "R" Club, President, Treasurer; Forum Club; Military Club; Hawkeye Boys' State.



JOANNE SEBERN "Jonie"
School Dramatics '43; Class Secretary, Treasurer, Junior Year; Thespians; Kappa Kappa Rho; Aristotelian, President; Baton Twirlers; Yearbook Staff, Business Manager; Girls' Glee Club; Student Council; Choir; Spanish Club.

CAROLYN SOLBRIG "Blondie"
Hi-Y-Ette; Baton Twirlers; Record Staff; Orchestra.



ALEX TESLOW

MARY LOUISE VOSMEK "Marilou"
Debate '43, '44; Kappa Kappa Rho; Hi-Y-Ette; Yearbook Staff, Editor; T.M.T.M.; Girls' Glee Club; Student Council.



NADINE WALTERS "Deede"
Kappa Kappa Rho; Hi-Y-Ette; G. A. A., Secretary; Yearbook Staff; Student Council; Orchestra; Marching Band; Chemistry Club, Secretary-Treasurer.

MARGARET WATT "Betty"
Class Secretary, Sophomore Year; Chemistry Club; Kappa Kappa Rho; Hi-Y-Ette; Aristotelian; Quill and Scroll, President; Baton Twirlers; Record Staff, Editor; Girls' Glee Club; Student Council; Choir; Mixed Chorus.



JUNE GRADS



DENA MAE ANDERSON

EVELYN BERRY "Trish"
Hi-Y-Ette; Baton Twirlers; Yearbook Staff; Girls' Glee Club; Student Council, Secretary-Treasurer; Choir; Pep Club.



JANET BOKORNEY "Corney"
Manus Classica; Kappa Kappa Rho; Hi-Y-Ette; Sigma Sigma; Baton Twirlers; Orchestra.

JEAN ETHEL BROWN "Brownie"
Debate '44; School Dramatics '44; Manus Classica; Sigma Sigma; G. A. A.; Quill and Scroll; Music Club; Record Staff; Business Manager; Orchestra; Tumbling Team.



DONALD BRUNS "Prunes"
Rifle Club; Orchestra; Chemistry Club.

RICHARD BUKACEK "Dick"
Football '42, '43; Track '44, '45; Debate '44, '45; Northeast Champions.



BARBARA BURKE "Barb"
Class Vice-President, Junior Class; Kappa Kappa Rho; Sigma Sigma; Student Council; Civil Service Club.

CHARLES CAMPBELL "Chuck"
Debate '43, '44, '45, Northeast Champions; Manus Classica; Hi-Y; Aristotelian, Vice-President; Yearbook Staff, Assistant Editor; Rifle Club, President, Vice-President, Treasurer; Student Council; Chemistry Club, President, Vice-President.



MARY LU CARPENTER "Carp"
Manus Classica, Secretary; Hi-Y-Ette; Sigma Sigma; G. A. A., Treasurer; Record Staff, Sports Editor; Student Council; Pep Club.

MAXINE CHARIPAR
Girls' Glee Club; Choir.

JUNE GRADS

ROBERT CLYDE

School Dramatics '43, '44, '45; Manus Classica, President; Thespians; Hi-Y; Rifle Club; Choir.

"Bob"



WALTER COMPTON

Music Club; Orchestra; Band.

MARGARET COUNTERMAN

School Dramatics '44; Manus Classica; Hi-Y-Ette; Sigma Sigma; Spanish Club.

"Daisy"



JEANETTE CRAWFORD

"Jeanie"

CHARLENE CURTTRIGHT

Manus Classica.

"Bubbles"



BILL DAVENPORT

Football '44; Track '43; Class Vice-President, Senior Class; Thespians; Hi-Y; Sigma Sigma; "R" Club; Forum Club; Student Council; Choir; Tumbling '41, '43; Cheer Leader.

"Rod"

CHARLOTTE MAE DAWSON

Manus Classica, Secretary; Colored Hi-Y-Ette, President; G. A. A.; Girls' Glee Club; Choir; Spanish Club, Vice-President.

"Lucky"



DUANE DeLONG

Football '42, '43, '44; School Dramatics '43, '44, '45; Thespians, Vice-President; Hi-Y; Sigma Sigma; Yearbook Staff; Rifle Club, Secretary-Treasurer; Student Council; Tennis '43, '44, '45; Hawkeye Boy's State '44.

"Rusty"

JUNE DREW

Kappa Kappa Rho; Girls' Glee Club; Hi-Y-Ette; Choir; Civil Service Club.

"Phyll"



PHYLLIS RUTH EDABURN

G. A. A.

"Phyll"

JUNE GRADS



MARJORIE ELY "Red"
Manus Classica; Hi-Y-Ette; G. A. A.; Spanish Club;
Girls' Glee Club.

JOHN RICHARD FARLEY "Dick"
Track '45; Manus Classica; Rifle Club; Chemistry
Club; Victory Corps.



ANNIE JOE FERGUSON "Annie"
Kappa Kappa Rho; Hi-Y-Ette.

ROSEMARY FULLER "Rosie"
School Dramatics '45; Kappa Kappa Rho; Hi-Y-Ette;
Sigma Sigma; Girls' Glee Club; Choir.



ARLENE GAINES "Red"
Kappa Kappa Rho; Hi-Y-Ette; Sigma Sigma; Baton
Twirlers.

JEANNE GARDNER "Little Audrey"
Kappa Kappa Rho; Hi-Y-Ette; Choir.



MARGARET GERBER "Maggy"
School Dramatics '43; Spanish Club, President;
Manus Classica, Secretary; Hi-Y-Ette; Aristotelian,
Secretary; Sigma Sigma, Vice-President; Quill and
Scroll; Record Staff, Assistant Editor; Student Council;
Chemistry Club, Vice-President, Secretary; Girls'
Tumbling Club.

RUTH GOOD "Red"
Hi-Y-Ette; Girls' Glee Club.



DORIS HAMED "Candy"
Debate '43, '44; Hi-Y-Ette; Record Staff; Girls' Glee
Club; Sigma Sigma; Student Council; Choir; Pep
Club.

TOMMY HARMON "Harmo"
Basketball '42; Track '45; School Dramatics; The-
spians; Hi-Y, President, Secretary; Sigma Sigma;
Quill and Scroll; Music Club; Record Staff, Sports
Editor; Rifle Club, Vice-President, Secretary; Student
Council; Choir; Marching Band; Victory Corps;
Cheerleader.

JUNE GRADS

PHYLLIS HARRELSON

"Boby"



BETTY HARRIS

School Dramatics '43; Manus Classica; Hi-Y-Este; Aristotelian, Secretary; Sigma Sigma; G. A. A.; Quill and Scroll; Record Staff; Forum Club, Secretary; Student Council; Girls' Tumbling Club.

FRANCIS HASSEL

"Hass"



LYLE HENRY

"Slim"

Track '43; Sigma Sigma; Forum Club; Student Council; Chemistry Club.

DOROTHY HIGH

"Corky"

Kappa Kappa Rho; Sigma Sigma; G. A. A.; Student Council; Civil Service Club; Sketch Club.



OWEN HOADLEY

Track '45; Manus Classica; Sigma Sigma; Rifle Club, Range Sergeant; Choir; Cheerleader.

KEITH JOHNSON

"Dimples"

Football '42, '43, '44; Track '43, '44, '45; Hi-Y; "R" Club.



WALLACE KANN

"Wally"

Sigma Sigma.

MARY GERALDINE KELSEY

"Jerry"

Kappa Kappa Rho; Chemistry Club.



BILL KLEIN

"Fuzzie"

JUNE GRADS



PATRICIA KLIER "Pat"
Kappa Kappa Rho, Secretary; Hi-Y-Ette, President;
Yearbook Staff, Picture Editor; Student Council, Sec-
retary-Treasurer; Choir; Civil Service Club.

DONALD KOEHN "Sugar"
Aristotelian; Quill and Scroll; Record Staff, Co-
editor; Spanish Club.



VERNELL KUEN
Hi-Y-Ette.

MARGARET LAKE "Peggy"
Class Secretary, Senior Year; Kappa Kappa Rho,
President; Sigma Sigma, Vice-President, Treasurer;
Yearbook Staff, Editor; Forum Club; Treasurer; Stu-
dent Council; Choir; Civil Service Club; Mixed
Chorus.



BEVERLY ANN LARSON "Tink"
Kappa Kappa Rho; Hi-Y-Ette; Sigma Sigma; G. A.
A.; Music Club; Orchestra; Marching Band.

NORMAN LONG "Norm'e"
Football '44; Basketball '44, '45; Track '43, '44, '45;
School Dramatics '43, '44, '45; Thespians; Hi-Y,
Sergeant-at-Arms; "R" Club, President, Treasurer;
Rifle Club; Student Council, President.



LORRAINE MAIN
Manus Classica; Sigma Sigma; Science Club.

DONALD W. MAURER "Don"
Sigma Sigma; Rifle Club; Victory Corps; Globe
Trotters.



MARY ALICE MELLEN
School Dramatics '44, '45; Manus Classica; Thes-
pians; Hi-Y-Ette, Vice-President; Choir; Chemistry
Club.

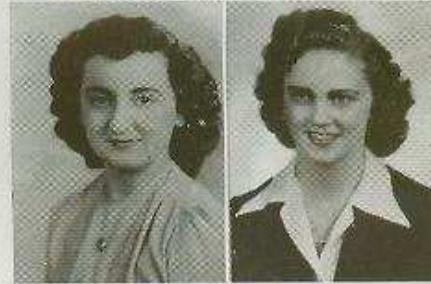
LOIS MENTZER

JUNE GRADS

DONNA MILLER "Blondie"
Kappa Kappa Rho; Hi-Y-Ette; Student Council.



BETTE MILOTA
Manus Classica; Sigma Sigma.



LaVELLE MEYERS

DONNA NELSON "Nels"
Manus Classica.



ELAINE NORMAN
Manus Classica; Aristotelian; G. A. A.; Yearbook Staff; Music Club, Secretary; Orchestra; Marching Band; Victory Corps; Art Club, Secretary-Treasurer.

DALE E. NOSEK "Filcher"
Civil Service Club; Chemistry Club.



MICHAEL O'ROURKE "Mickey"
Debate '43, '44, '45, Northeast Champions; Class President, Senior Year; Sigma Sigma, President; Quill and Scroll; Record Staff; Student Council; Duodecim, Secretary-Treasurer; Globetrotters; Hawk-eye Boys' State '44.

MARIAN PESEK
Hi-Y-Ette.

RAY PETRZELKA "Polack"
Football '41; Basketball '40, '41, '42, '43, '44, '45; Track '45; Class President, Sophomore Year; Hi-Y, Treasurer; "R" Club, Vice-President; Yearbook Staff, Business Manager; Student Council, Sergeant-at-Arms; Rifle Club; Sigma Sigma; Camera Club; Civil Service Club; Chemistry Club; Band.



GENE PHILLIPS "Flip"
Football '42, '43; Basketball '41, '42, '43, '44; Track '43; School Dramatics '42, '43, '44, '45; Gamma Delta; Thespians, President; Hi-Y; Aristotelian, President; Sigma Sigma; Student Council, Vice-President.

JUNE GRADS



BETTY JEAN POTTER "Pot"
Kappa Kappa Rho, Treasurer; Hi-Y-Ette, Secretary;
Student Council; Civil Service Club.



RUBY PROCHASKA
Kappa Kappa Rho.

ARLENE REJSA
Kappa Kappa Rho; Sigma Sigma.



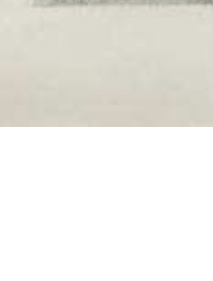
JACK J. REJSA
Basketball '45; Track '43; Rifle Club; Chemistry Club.



JOHN RICHLING "Long John"



BILL RILEY "Willie"
Football '44.



JANET ROBERTSON "Jan"
Hi-Y-Ette, Treasurer; G. A. A.; Record Staff; Student
Council; Orchestra; Choir; Cheerleader '43, '44, '45.

BOB ROWELL "Limpy"
Football '44; Basketball '42; Track '42; School Dramatics '44, '45; Thespians; Hi-Y; Record Staff; Student Council.



HARRIET RUBY "Hattie"
Hi-Y-Ette; Aristotelian; Sigma Sigma; G. A. A.,
President, Vice-President; Record Staff; Civil Service
Club; Pep Club.

AL SCHAMBERGER
Football '42, '44; Basketball '40, '41, '42, '43, '44,
'45; Track '45; School Dramatics '44, '45; Class
Vice-President, Sophomore Year; Thespians; Hi-Y,
Treasurer, Vice-President; Sigma Sigma, President;
'R' Club; Yearbook Staff; Record Staff; Student
Council; Hawkeye Boys' State '44.

JUNE SENIORS

CARYL JEAN SCHMATT

Hi-Y-Ette; G. A. A.; Cheerleader '44, '45; Pep Club.

"Stinky"



DELORES SHAHEEN

Hi-Y-Ette; Sigma Sigma; G. A. A.; Girls' Glee Club; Student Council; Civil Service Club; Mixed Chorus.

"Dee"

GENE SPICER

"Spiker"



EVERETT STERNER

Aristotelian.

"Ev"

VIRGINIA STRANSKY

Kappa Kappa Rho; G. A. A.; Sigma Sigma; Record Staff; Student Council.

"Gin"



LEONARD STURM

Football '40, '41, '42, '43, '44; Basketball '40, '41, '42, '43, '44, '45; Track '40, '41, '42, '43, '44; School Dramatics '40, '41; Hi-Y; Sigma Sigma, Secretary; "R" Club, Vice-President; Record Staff; Forum Club, Secretary, Treasurer; Military Club; Hawkeye Boys' State.

"Len"

MARGARET JEAN THOMAN

Kappa Kappa Rho; Music Club; Orchestra; Band.

"Jeanie"



BETTY TRIMBLE

Kappa Kappa Rho; Vice-President; Hi-Y-Ette, Vice-President; Baton Twirlers; Yearbook Staff; Civil Service Club; Pep Club.

"Kolach"

ROBERT VRBA

Track '44, '45; "R" Club.

"Bob"



ORVILLE WALKER

Class Secretary, Junior Year; Spanish Club.

JUNE SENIORS



BONNIE JEAN WARD

"Bon Ami Jean"

Sigma Sigma; G. A. A.; Girls' Glee Club; Band.



LILLIAN WINGFIELD

"Lil"

Colored Hi-Y-Ette, President; Spanish Club; Record Staff



PAT ZIEGLER

"Twirp"

Hi-Y-Ette; Sigma Sigma; G. A. A.; Baton Twirlers; Girls' Glee Club; Mixed Chorus.



DON VERNIER

"Ratz"

Choir.

SENIOR LETTER MEN

— Football —

Keith Johnson, Capt.
George Baba
Norman Long
George McFatrige
Al Schamberger
Leonard Sturm
Tom Chester
Bill Davenport

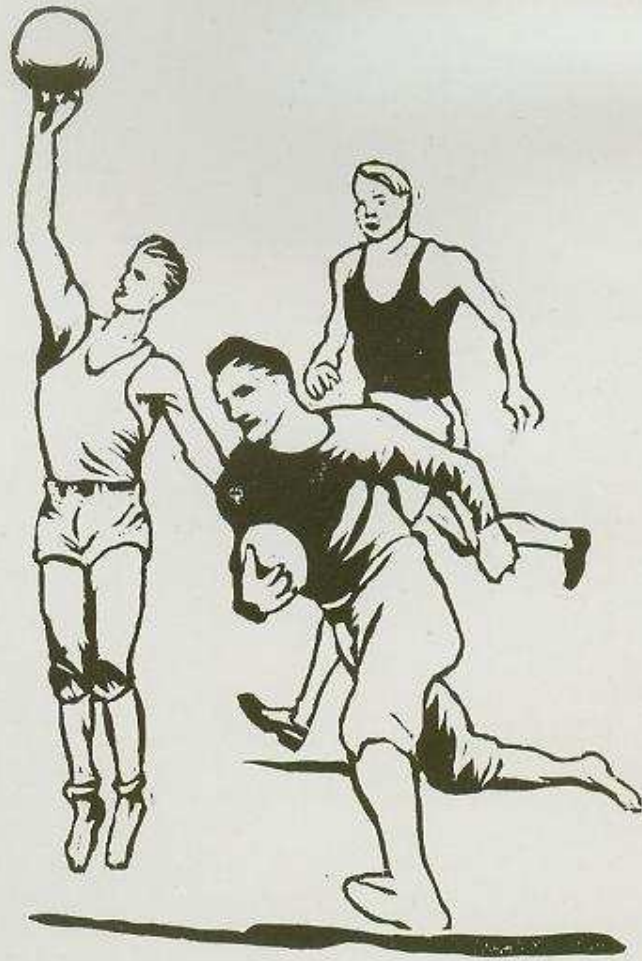
— Basketball —

Ray Petrzelka, Capt.
Al Schamberger
Norman Long



— SNAPS NO. 2 —

1. "Having a wonderful time!"
2. Girls' Volley Ball Champions.
3. Girls' Volley Ball "runnerups."
4. Ah, sweet gym!
5. June Annual Staff.
6. Time out for a little fun!
7. Jack Rejsa, working on a lathe.
8. Volley ball team in action.
9. Another team in action.
10. Keith Johnson, Football Captain.
Ray Petrzeka, Basketball Captain.
11. "Studios" O'Rourke.
12. Al Schamberger.
13. Girls' Basketball.
14. Al Schamberger, printing the Annual.
15. Girls' Dean, Miss Zika.
16. Fifth hour buddies.
17. "Maggy."
18. "Polack."
19. Girls' Basketball.
20. Bob Clyde,
Billy Williams;
Thespian Play.
21. Football practice.
22. "Good Strategy."
23. John Williams,
Bob Clyde;
Thespians.
24. Duane DeLong,
Vi Stumpff;
Thespians.
25. Keith Johnson.
26. Mr. Anderson, Woodworking Teacher.
27. Boys' Gym.
28. Duane DeLong,
Vi Stumpff,
Bob Clyde;
Thespians.
29. Study on a Radiator Knob.
30. "Hard up!"
31. Art students.
32. Duane DeLong,
Bob Muir;
Thespians.
33. Maggy and Al.
34. Thelma Trimble,
Mickey O'Rourke,
Chuck Campbell,
Dick Bukacek;
Debate.
35. "Debate."
36. "Horizon" girls.



FOOTBALL SQUAD



Fourth row: Duane DeLong, Coach Sam Cooper, Bill Riley, Gerald Newport, Don Dvorak.
Third row: Al Schamberger, Norman Long, Bob Kephart, Bill Anderson, Bill Davenport, Bob Thompson, Tom Kehm.
Second row: Bob Benson, Don Martin, George Schamberger, Bob Barnes, Lee Bailey, Manny Wise, Ronnie Beam.
First row: Ray Yeakle, George Baba, Glenn Medhus, Keith Johnson (Capt.), Dick Drew, George McFtridge, Len Sturm.

FOOTBALL 1944

The football season looked none too bright as there were only three returning lettermen, George McFtridge, Don Martin, and George Baba, along with Len Sturm, Ray Yeakl, Keith Johnson who saw considerable action in the '43 season. The armed forces put another crimp in Coach Sam Cooper's hopes, by taking Jack Abshire. Then Bob Canterbury and Tom Chester were shelved by injuries early in the season. Coming up from the '43 Sophomore squad George Schamberger, Lee Bailey, Bob Barnes, and Manny Wise filled in these vacancies nicely. Later in the season the squad was bolstered by the appearance of Al Schamberger who took over a tackle position.

The Roughriders' season wasn't so unsuccessful as predicted, for they came out on top in City title race and placed fourth in the Mississippi Valley Conference. In the City, Roosevelt stopped all foes. They beat Wilson 7-6, on Bill Davenport's touchdown and Len Sturm's conversion. McKinley fell 7-0 with Donny Martin out until the Franklin game. The Roughriders came from behind in the last half with a great passing attack, featuring Manny Wise, with Yeakle and Sturm doing the grabbing, thus stopping Franklin 14-13. Rounding out the conference play, Roosevelt beat West Waterloo 12-0 for the first win over that school in Roosevelt High's history. Clinton's veteran team outclassed the crippled Riders 26-0 and lost to Dubuque 19-13, in the closing minutes of the game. Roosevelt kept even with her non-conference foes losing to Charles City in the opener 12-0 and trampling Grinnell in our Homecoming 20-7. Thus winding up the season with five wins and three losses.

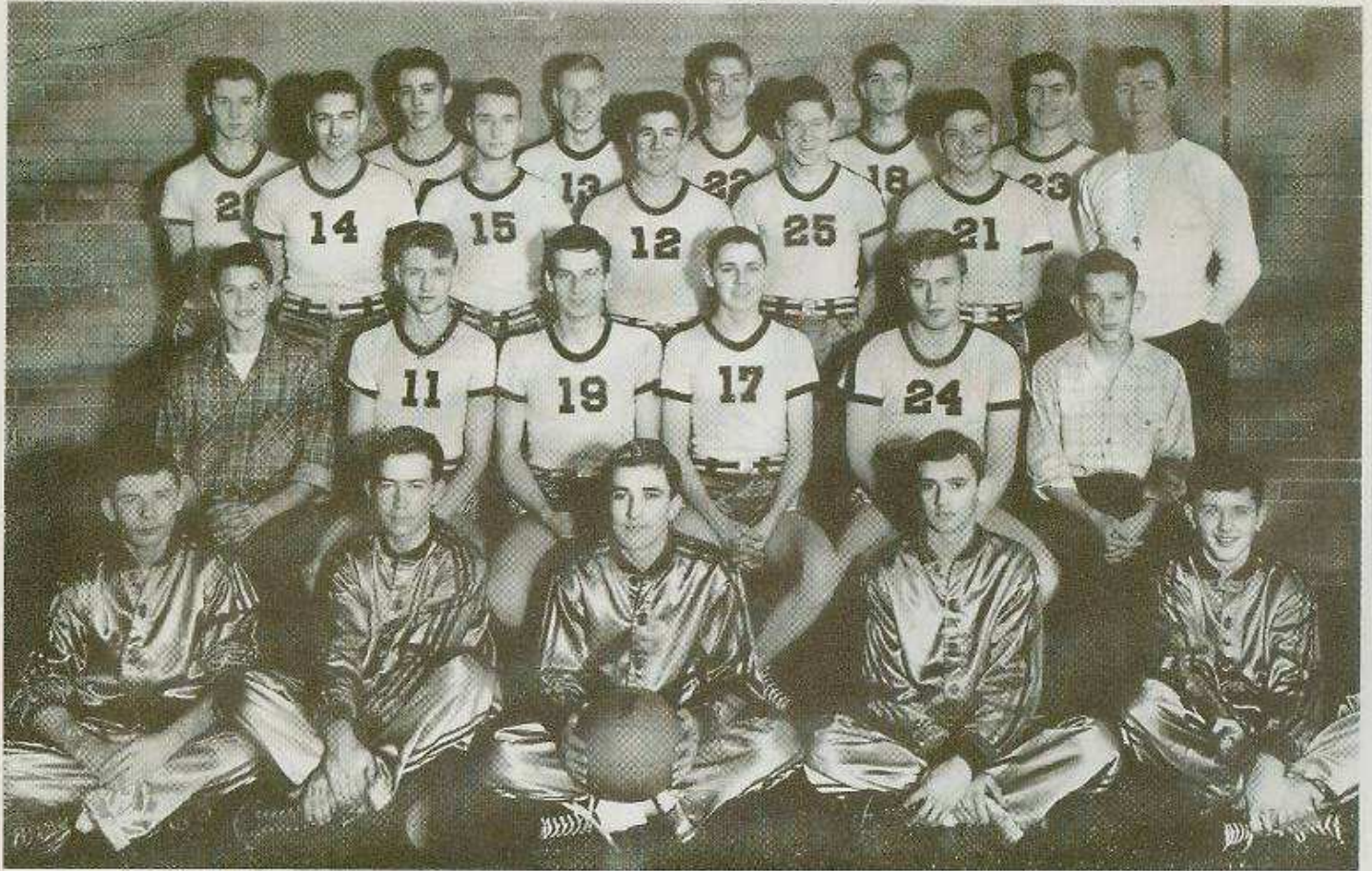
The letter winners of the '44 season were: Keith Johnson*, (Capt.), Glenn Medhus, Dick Drew, George Baba*, Jim Edmunds, Norman Long*, George McFtridge*, Al Schamberger*, Len Sturm*, Ray Yeakle, Bob Benson, Tom Chester*, Lee Bailey, George Schamberger, Don Martin, Bob Canterbury, Manny Wise and Bill Davenport*.

* Seniors.

— Season Scores —

Roosevelt	0	—	Charles City	12
Roosevelt	12	—	West Waterloo	0
Roosevelt	7	—	Wilson	6
Roosevelt	7	—	McKinley	0
Roosevelt	14	—	Franklin	13
Roosevelt	0	—	Clinton	26
Roosevelt	13	—	Dubuque	19
Roosevelt	20	—	Grinnell	7

BASKETBALL SQUAD



Fourth row: Ronnie Beem, Bob Benson, Earl Yanacek, Ray Petrzeka, Bob Muir, Don Martin, Coach Clem Carney.
Third row: Duane DeLong, Keith Camizzi, Norman Long, Lee Bailey, George Schamberger.
Second row: Assistant Manager Hersem, Len Sturm, Don Dvorak, Dale McConnell, Al Schamberger, Manager Hinton.
First row: Dick Krohn, John Williams, Arno Sindelar, DeVerne Dixon, Wayne Chadima.

BUTTERNUT BAKERS



Back row: Al Schamberger, Jim Rice, Ray Petrzelka, Don Martin, Manny Wise.
 Middle row: George Schamberger, Lee Bailey, Bill Stodola, Art Van Cleve.
 Kneeling: Joe Cemelik, Dale McConnell, Russ Hamilton, Bob Canterbury, Glenn Medhus,
 Jack Carpenter. Mascots are Knifey and Forky Wise.

BASEBALL 1944

The Butternut Bakers with seven returning veterans successfully defended the 1943 championship title by winning nine and losing one. The Bakers won two games from each of the following teams: Becks, Armstrongs, Smulekoffs, Iowa Manufacturing, and split even with Roosevelt Hotel. These wins entitled the Bakers the right to play in the single game elimination tournament sponsored by the American Legion.

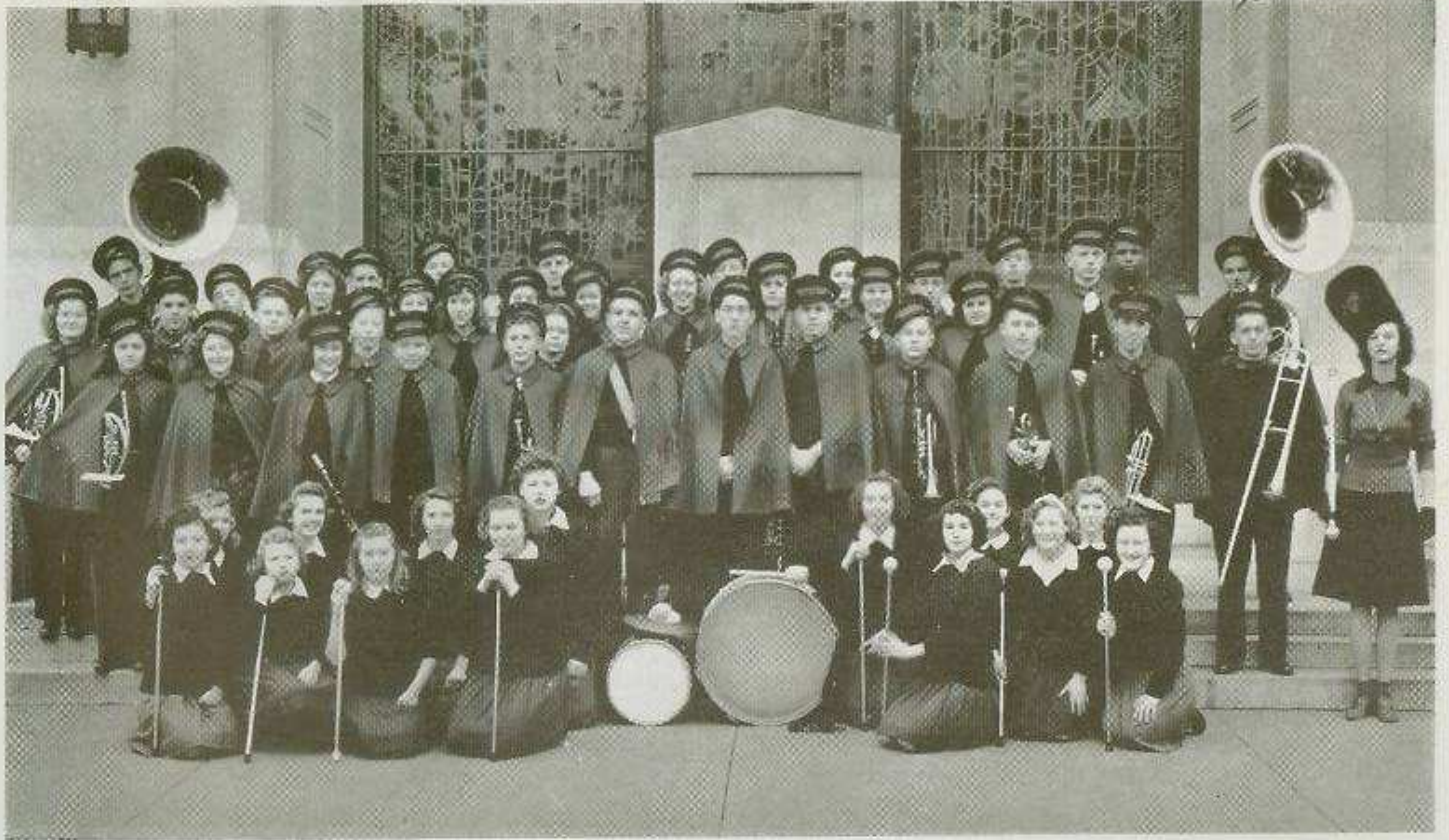
Opening the tournament play Butternut downed Davenport, always a tough district opponent, 5-2. Next was Burlington, in a two out of three game series, of which Cedar Rapids won the first game 2-0 and losing the next two games at Burlington, 6-5 and 3-2. Thus ended the career of one of the most brilliant and well-balanced Legion teams in the history of Cedar Rapids.

Boys who are too old to play this season are, Catcher Jim Rice, Pitchers Al Schamberger and Bill Stodola, First Baseman Ray Petrzelka, Second Baseman Lee Bailey, and Third Baseman Manny Wise. Returning to bolster this year's squad are: Catcher Al Seabrook, Pitcher Bill Brown, First Baseman Art Van Cleve, Short Stop George Schamberger, Third Baseman Jack Carpenter and Outfielders Glenn Medhus, Don Martin, Dale McConnell, and Russ Hamilton.

Won	Lost	Pct.
12	3	.800

— The Season Scores —

Butternut	5	—	Becks	0
Butternut	4	—	Iowa Mfg.	1
Butternut	8	—	Smulekoffs	1
Butternut	7	—	Roosevelt Hotel	0
Butternut	8	—	Marion	1
Butternut	3	—	Armstrongs	2
Butternut	6	—	Iowa Mfg.	2
Butternut	1	—	Roosevelt Hotel	4
Butternut	21	—	Smulekoffs	2
Butternut	11	—	Becks	0
Butternut	9	—	Armstrongs	Forfeit
Butternut	5	—	Davenport	2
Butternut	2	—	Burlington	0
Butternut	5	—	Burlington	6
Butternut	2	—	Burlington	3



ROOSEVELT MARCHING BAND

DEBATE SQUAD



First row, left to right: Jean Pazour, Wilma Ostrander, Miss Chick, Thelma Trimble.
Second row, left to right: Dick Bukacek, Bill Pfeffer, Chuck Campbell, Don Johanos, Mickey O'Rourke.



ARISTOTELIAN



First row, left to right: Gene Phillips, Margaret Gerber, Betty Harris, Elaine Norman, Harriet Ruby, Dick Bukacek.
Second row, left to right: Lee Bailey, Chuck Campbell, Everett Sterner, Don Koehn, Don Johanos.

G. A. A.



Back row: Ruth Kline, Norma Malecek, Ruth Coonley, Grace Hersom, Bonnie Ward, Virginia Stransky, Katherine Murphy, Wilma Malecek, Joyce Bruce, Loudean Andrews, Lavona Dvorak.
Second row: Delores Croff, Shirley Marsh, Shirley Drew, Pat Vanous, Vi Stumpff, Claudine Kent, Mary Lu Schwandt, Marjorie Ely.
First row: Mary Kenyon, Harrier Ruby, Donna Hiland, Mary Alice McCabe, Dorothy High, Jean Brown, Delores Gallagher, Dorothy Zobin, Mary Lu Carpenter, Lyla Buckwheat, Jean Zobl.

HI-Y



Third row: Bob Thompson, Duane DeLong, Bob Carpenter, Art Van Cleve, Dale McConnell, Ronnie Beam, Bob Benson, Bob Clyde, Don Dvorak, Bob Barnes, Bill Anderson, Bob Rowell.
Second row: Bill Pfeffer, Bill Davenport, Ray Petzelka, Al Schamberger, Tom Harmon, George Schamberger, Norman Long, Don Johanos.
First row: Keith Camizzi, Gene Phillips, Emmett Collister, Glenn Medhus, Marvin Sedlacek, Al Sindelar.

HI - Y - ETTÉ



First row, left to right: Reberta Hill, Joan Clark, Bonnie Apland, Mary Alice Rundall, Shirley Thompson, Arlene Merriams, Wava Buckwheat.
Second row, left to right: Marjory Ely, Mary Lu Carpenter, Carol Barta, Nancy Peuler, Marilyn Humbert, Nina Hibben, Marilyn Frasinger.
Third row, left to right: Marian Newhard, Betty Potter, Janet Robertson, Pat Klier, Betty Trimble, Rosemary Ziegler.
Fourth row, left to right: Mary Jo McNeil, Jean Zobl, Anita Heath, Lili Buckwheat.
Fifth row, left to right: Shirley Marsh, Barbara Klein, Norma Malecek, Betty Parker, Betty Mitchell, Bonnie Odland, Carolyn Solbrig, Dorothy Nosek, Jeanne Gardner, Barbara Bowser, Elizabeth Froman, Dorothy McIntyre.

MANUS CLASSICA



First row, left to right: Jean Barvinek, Helenka Bartunek, Jean Workman

Second row, left to right: Genevieve Buess, Mary Alice McCabe, Barbara Birch, Betty Michel, Jane Smith, Mildred Koen, Miss Chambers, Evelyn Hall.

Third row, left to right: Richard Roseberry, Bill Hillborn, Art Van Cleve, Jack Carpenter, Bob Clyde, Dick Mitchell, Franklin Burke, Dwaine Soucek, Elsner Northrup.

MUSIC CLUB



First row, left to right: Janet Brown, Jean Brown, Mary Kenyon, Jane Bell, Genevieve Buess, Sally King, Jane Smith, Richard Roseberry, Elsner Northrup.
Second row: Dwaine Soucek, Clarice Kart, Shirley Cumley, Joan Vlcko, Katherine Christianson, Elaine Norman, Jean Thoman, Bob Heaton, Walter Compton.
Third row: Mr. Vesely, Katherine Murphy, Lillian Hanzlik, Thelma Trimble, Mary Lu Schwandt, Don Stevens, Don Mann, Don Johanos, Bill Pfeffer, Dale Pierson, Bill Anderson, Marvin Sedlacek.

"R" CLUB



Back row: Bob Verba, Al Schamberger, Arno Sindelar, Bob Muir, George Baba, Keith Johnson.
Middle row: Dick Bukacek, Tom Chester, Earl Ballou, Jim Edmunds, Dick Drew, Ray Petzelka.
Front row: Norman Long, Len Sturm, Don Martin

RIFLE CLUB



Second row: Francis King, Bill Dale, Bob Clyde, Earl Yanecek, Arno Sindelar, Owen Hoadley, Elmer Whitehair, Roger Marks, Bob Milota, Tom Freund.
First row: Glen Ebert, Tom Harmon, Wayne Chadima, Jim Burke, Dick Krohn, Don Bruns.

SPANISH CLUB



Third row: Tom Freund, John Wieneke, Don Koehn, Homer Zinke.
Second row: DeLoris Kurth, Annabell Gilmore, Betty Hickman, Margaret Gerber, Lillian Wingfield, Charlotte Dawson.
First row: Lillian Hanzlik, Marjorie Ely, Margaret Counterman, Wilma Ostrander, Elaine Curtis.

STUDENT COUNCIL



First row, left to right: Jean Zobl, Barbara Champlin, Donna Miller, Evelyn Berry, Betty Potter, Marilyn Frasinger.
Second row, left to right: Dale Gosch, Wayne Chadima, George Schamberger, Verne Dvorak, Lyle Henry, Ray Petzelka, Tommy Harmon, Bob Rowell, Gene Phillips, Lee Bailey, Norman Long.

ART CLUB



Back row: Al Miller, Warren Endsley, Ronnie Beam, Don Dunlap, Jim Miller.
First row: Jean Rogers, Elaine Norman, Elaine Curtis, Thelma Trimble, Claudia Hacker, Elisabeth Froman, Otilia Anderson, Laudean Andrews.

CHEMISTRY CLUB



First row, left to right: Margaret Gerber, Janet Robertson.
Second row, left to right: Keith Camizzi, Ruth Zier, Barbara Champlin, Ruth Coonley, Mary Kelsey, Dick Bukacek.
Third row, left to right: Wayne Chadima, Donald Bruns, R. Duane Minor, Bob Von Stein, Chuck Campbell, Dale Nosek, Floyd Thompson, Dick Farley, Al Sindelar, Roger Hartman.

KAPPA KAPPA RHO



First row, left to right: Dorothy Zobin, Claudine Kent, Arlene Rejsa, Betty Novak, Dorothy Nosek, Marian Newhard.
 Second row, left to right: Beverly Larson, Carol Barta, Ruby Prochaska, Doris Haldy, Donna Miller, Mary Jo McNiell, Jean Zobl, Joan Fox, Pauline Linder, Shirley Marsh.
 Third row, left to right: Norma Malecek, Wilma Malecek, Betty Potter, Peggy Lake, Betty Trimble, Pat Klier, Marilyn Humbert, Lavona Dvorak, Joyce Bruce.
 Fourth row, left to right: Theola Moore, Margaret Heald, Nancy Pealer, Janet Bekorney.
 Fifth row, left to right: Lila Carrier, Betty McKabe, Shirley Graw, Donna Pratt, Bessie May Rowray, Katherine Murphy, Jeanne Gardner, Barbara Bowser, Marilyn Frasinger, Nina Hibben, Ruby Pratt, Bonnie Kephart, Dorothy Schmidt, Pat Vanous.

RECORD STAFF



Back row: Bob Whitney, Tom Harmon, Ray Yeakle, Don Johanos, Al Schamberger, Gerald Newport, Mickey O'Rourke, Bob Rowell, Marvin Sedlacek.
 Middle row: Marion Newhard, Mary Jo McNiell, Janet Robertson, Margaret Gerber, Betty Harris, Jean Brown, Virginia Stransky, Lillian Wingfield.
 Front row: Doris Hamed, Dorothy Zobin, Harriet Ruby, Ruth Zier, Mary Lu Carpenter, Pat Helbig, Elisabeth Froman, Phyllis West.

SIGMA SIGMA



First row, left to right: Margaret Counterman, Jean Brown, Violet Stumpff, Harriet Ruby, Dorothy High, Jane Smith, Betty Harris, Margaret Gerber, Donna Miller, Barbata Burke, Peggy Lake.
Second row: Delores Shaheen, Lorraine Main, Betty Milota, Thelma Trimble, Duane DeLong, Virginia Stransky, Al Schamberger, Gene Phillips, R. Duane Minor, Bill Davenport.
Back row: Mary Jo McNeil, Marion Newhard, Roberta Hill, Lee Bailey, Tom Harmon, Gerald Newport, Lyle Henry, Bob Benson, Owen Hoadley, Ray Petzelka, Warren Ensley, Ronnie Beam, Keith Camizzi, Roger Hartman, Tom Freund, Arlene Rejsa, Bonnie Ward.

ROOSEVELT SENIOR HIGH CLUBS

Aristotelian
G. A. A.
Hi-Y
Hi-Y-Ette
Manus Classica
Music Club
"R" Club
Rifle Club
Lab Technicians

Spanish Club
Student Council
Art Club
Chemistry Club
Kappa Kappa Rho
Record Staff
Sigma Sigma
Thespians
Quill and Scroll

THESPIANS



Third row, left to right: Miss Sheets, Emmett Collister, Bob Whitney, Barbara Bowser, Bob Benson, Bob Muir, Bob Clyde, Dale McConnell, Duane DeLong, Bob Von Stein, Dick Bukacek.
Second row, left to right: Thelma Trimble, Norman Long, Tom Harmon, Mary Lu Schwandt, Bill Pfeffer, Bob Rowell, Gene Phillips, Al Schanberger.
First row, left to right: Roberta Hill, Mary Alice Mellen, Phyllis West, Donna Highland, Dolores Groff, Barbara Champlain, Violet Stumpff.

-:- Autographs -:-

-:- Autographs -:-



