

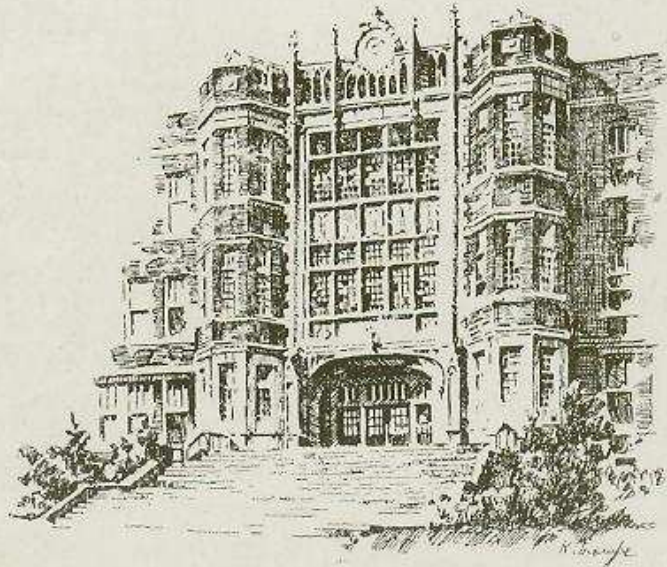
1946 ROUNDUP

1946 Roundup

Edited and printed by students of

Roosevelt High School

Cedar Rapids, Iowa

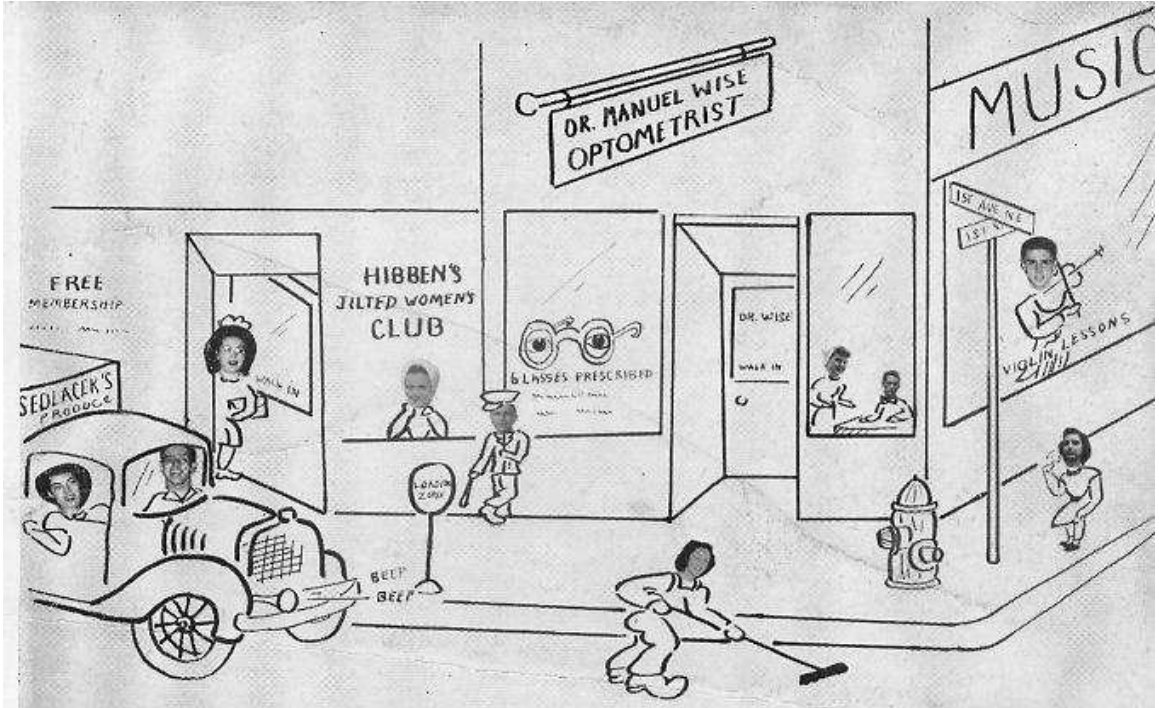





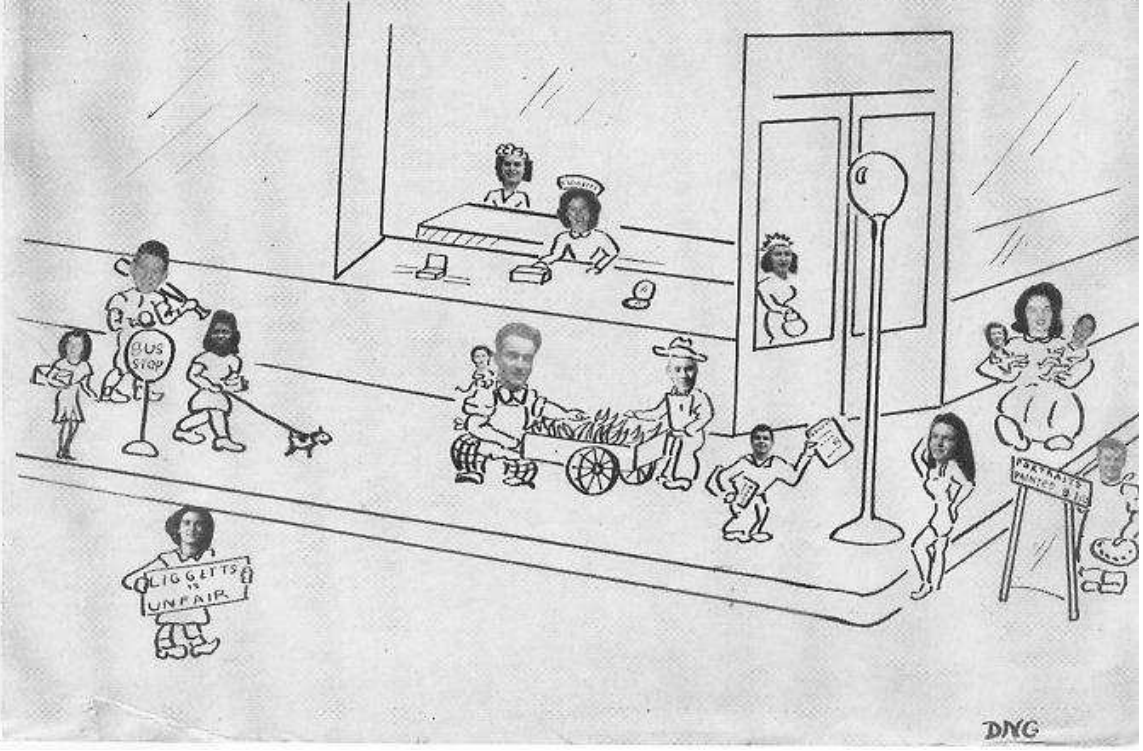
Annual Staff Seated: Jack Reindl, Donna Hiland, Barbara Champlain, Bill Pfeffer. Second Row: Bob Von Stein, Lavona Dvorak, Carol Barta, Elizabeth Froman, Dolores Groff, Inez Kruse, Pat Vanous, Harold Sanders. Third Row: Don Krohn, Tom Freund, Don Spooner, Bob Benson, Ronnie Beam, Dave Mehaffey, Harry Lee, Jr.

RECIPE FOR THE 1946 ANNUAL

Take two new advisors in the form of Chester Mau and Miss Houts, along with Miss Walker, the only advisor who has had any experience. Now add three editors-in-chief: Bill Pfeffer, Barbara Champlin, and Jack Reindl, who know that the Annual must be put out but not exactly how to do it. Slowly sift in Donna Hiland who has some good suggestions, and five artists: Elizabeth Froman, Ronnie Beam, Dolores Groff, Warren Endsley, and David Mehaffey. Measure out an efficient business staff consisting of Bob Von Stein and Bob Benson. Then drop in a picture editor, Tom Freund. To provide spice, put in Carol Barta, Pat Vanous, Inez Kruse, and Lavona Dvorak, typists. Top it all with Don Spooner, Marvin West, Junior Lee, Don Krohn, and Harold Sanders, the print shop boys who do all the actual labor. Stir well and let simmer for two semesters in the Annual office. Then in May remove from the fire and there you have it, the 1946 ROUNDUP.



 A GLANCE INTO THE FUTURE!





JNG

The Yearbook has won a well-established place among school activities. Year after year it comes out and provides a record of some of the events in our school and of the people who participated in them. May this year's "Round Up" be to all of you a pleasant memento of happy experiences while it perpetuates your loyalty to Roosevelt High School and also to the principles and ideals which were fostered in your education.

FRED J. KLUSS, Principal



MR. KLUSS, PRINCIPAL



MISS MARTIN, LIBRARIAN



MISS ZIKA, DEAN OF GIRLS



SARA S. KATZ, OFFICE



MARTHA MILLER, OFFICE

RECIPE FOR A TEACHER

A recipe for a teacher
Is not so hard to create;
He's just an ordinary person
Who tries to educate.

First take a lot of knowledge,
Then a touch of kindness fair;
Add a dash of understanding
And the helpfulness that's there.

Mix till all these things are blended;
Make the right amounts a feature,
And the finished product emerges—
A pal, an adviser, a teacher.

—J. W.





MR. COOPER
PHYSICAL EDUCATION



SCIENCE: MR. STOLAR, MR. PATEE, MR. MYRON
MATHEMATICS: MISS RICEY, MISS BRADEN



MRS. ZUIDEMA
PHYSICAL EDUCATION



COMMERCIAL: MISS GRISSSEL, MR. MILLER, MISS WILLIAMS



HOME ECONOMICS: MISS STAUFFER,
MISS DUNCAN, MISS MOFFIT



SOCIAL SCIENCE: MISS PAUL,
MR. HUGHES, MRS. TORSTENSON



MISS HOUTS
ART



MRS. KAMRADT
MUSIC



MR. FLEMING
MUSIC



ENGLISH: MRS. CHERAK, MISS SHEETS, MISS TERRILL, MISS WALKER,
MISS CHAPIN, MISS CHAMBERS

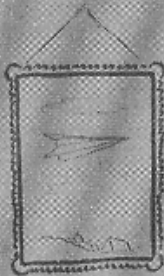


INDUSTRIAL ARTS: MR. MAU, MR. ANDERSON, MR. CHRISTOPHE, MR. EERNISSE

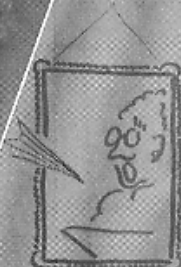




JANUARY



1946







WILMA OSTRANDER

Manus Classica; Hi-Y-Ette; Debate; Spanish Club; Glee Club; National Forensic League.

BILL PFEFFER

Manus Classica, Secretary; Thespians, President; Hi-Y, Chaplain; Debate; Band; Marching Band; Orchestra; Choir; Music Club, President; Aristotelian; Student Council; Annual Staff, Editor; School Dramatics; Best Thespian; National Forensic League; Class Officer, President, Junior Year.

ARLYN REED

Kappa Kappa Rho; Hi-Y-Ette; Student Council; Work on Red Cross Project; Civil Service Club.

MARILOU SCHWANDT

Thespians; Hi-Y-Ette; Band; Marching Band; Orchestra; Music Club; G.A.A.; School Dramatics; National Thespian; Work on Red Cross Project; Drum Majorette; Class Officer, Secretary, Senior Year.

MARVIN SEDLACEK

Record Staff, Advertising Manager, Business Manager; Hi-Y; Band; Marching Band; Orchestra; Music Club, Recording Secretary; Student Council; Chemistry Club, President; Quill and Scroll; Class Officer, Vice-President, Sophomore Year.

JANE SMITH

Manus Classica; Band; Marching Band; Orchestra; Music Club; Aristotelian; Sigma Sigma.

VIOLA TATE

Record Staff.

LEWIS VAVRA

Manus Classica.

BILL WALTON

PHYLLIS WEST

Thespians; Record Staff; Hi-Y-Ette; Choir; Student Council; School Dramatics; Work on Red Cross Project.

MANNY WISE

— SENIORS NOT PICTURED —

GLENN ATHEY (Navy)

ROBERT CURTTRIGHT (Army)

THOMAS GALLAGHER (Army)

NORMAN D. LONG (Army)

FRANK JOSEPH ROSKOP (Navy)

LEONARD STURM (Army)



Pretty Snazzy



Two of a kind



Good match

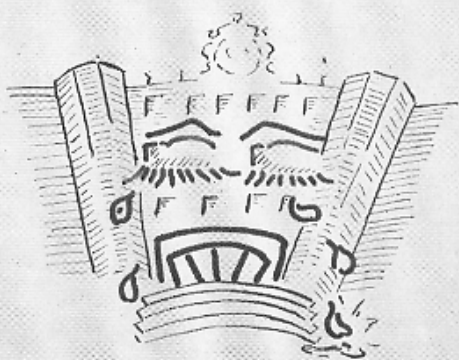


Legs!

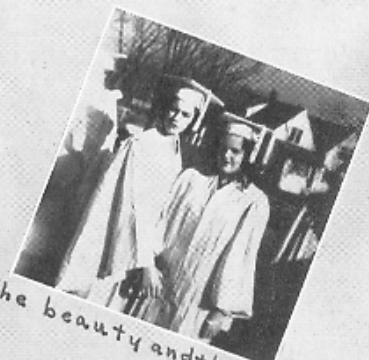
LAST DAYS



Bright boy



Easy come gladly go



The beauty and the beast



Take your pick



Tyrone!



Chums!



Apple Shiners!



Oh! Reverend



Hubba! Hubba!



Gruesome!



Locker Pals!



Boing!



Angel



Farmer's Delight



Future Stenogs

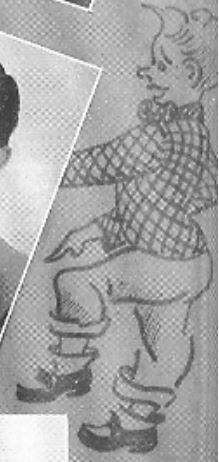




JUNE
1946

















OTILIA ANDERSEN

Choir; Art Club, Secretary-Treasurer

BILL ANDERSON

Football '43, '44; Hi-Y; Band; Marching Band; Orchestra; Music Club.

LOUDEAM ANDREWS

Choir; G.A.A.; Sigma Sigma; Art Club; Spanish Club.

ROBERT BARNES

Track '44, '45, '46; Football '43, '44, '45; Hi-Y, Treasurer; "R" Club, Secretary-Treasurer; Aristotelian; Student Council, Vice-President, President; Class Officer, President, Senior Year.

ROBERT BENSON

Football '42, '43, '44, '45; Basketball '42-'43, '43-'44, '44-'45, '45-'46; Thespians; National Thespians; Hi-Y, Treasurer; Choir; "R" Club; Sigma Sigma; Annual Staff; School Dramatics; Globe Trotters.

MARY LOU BRIDGE

Chemistry Club; Work on Red Cross Project.

JOYCE BRUCE

Kappa Kappa Rho; Manus Classica, Secretary-Treasurer; G.A.A.; Chemistry Club.

WAYNE CHADIMA

Track '45, '46-Manager; Football '45-Manager; Basketball '44-'45, '45-'46; Hi-Y; "R" Club; Rifle Club, Secretary-Treasurer; Sigma Sigma; Student Council; Chemistry Club.

BARBARA CHAMPLIN

Thespians; National Thespians; Hi-Y-Ette; Choir; Aristotelian; Sigma Sigma; Student Council; Lab Tech; Chemistry Club; Annual Staff.

KATHRYN CHRISTENSEN

Band; Music Club; Marching Band; Orchestra.

EMMETT COLLISTER

Manus Classica, President; Thespians; National Thespians; Record Staff; Hi-Y, President; Choir; Aristotelian; Sigma Sigma; Student Council; Chemistry Club; School Dramatics.

RUTH COONLEY

Manus Classica; Record Staff; G.A.A.; Chemistry Club, Secretary-Treasurer; Work on Red Cross Project.

LILA CURRIER

Kappa Kappa Rho; Hi-Y-Ette; Choir; Lab Tech; Work on Red Cross Project.

LAVONA DVORAK

Kappa Kappa Rho; Thespians; Hi-Y-Ette; G.A.A., Secretary; Annual Staff; School Dramatics.

WARREN ENDSLEY

Manus Classica; Thespians; Choir; Sigma Sigma; Art Club; Annual Staff.

JEAN FLOYD

Chemistry Club.

TOM FREUND

Track '45, '46; Basketball '43-'44; Thespians; Choir; Rifle Club, Treasurer, Secretary, President; Annual Staff; Sigma Sigma; School Dramatics; Spanish Club.

RUTH FURMAN

Choir.

DOLORES GALLEGER

Hi-Y-Ette; G.A.A., Treasurer.

ANNABELLE GILMOR

Orchestra; Music Club; Library Club; Spanish Club.

SHIRLEY GRAW

Kappa Kappa Rho; Hi-Y-Ette; Sigma Sigma; Lab Tech.

DELORES GROFF

Thespians; National Thespians; G.A.A., President; Aristotelian; Lab Tech; Work on Red Cross Project; Art Club; Annual Staff; School Dramatics.

JIM HARRINGTON

Track '45; Hi-Y; Sigma Sigma.

ROGER HARTMAN

Track '46; Thespians; National Thespians; Hi-Y; Sigma Sigma; Student Council; Lab Tech; Chemistry Club; School Dramatics; Globe Trotters.

PATRICIA HELBIG

Record Staff; Hi-Y-Ette; Orchestra; Lab Tech.

DONNA HILAND

Thespians; National Thespians; Hi-Y-Ette; G. A. A.; Student Council; Annual Staff; School Dramatics; Work on Red Cross Project; Class Officer, Vice-President, Junior Year.

EUNICE HITE

Kappa Kappa Rho; Hi-Y-Ette.

MARILYN HOFFNER

RICHARD HOSKINS

ROBERT KEPHART

Track '45, '46; Football '43, '44, '45; Hi-Y; "R" Club; Lab Tech; School Dramatics.

BONNIE KEPHART

Kappa Kappa Rho; Work on Red Cross Project.

MILDRED KOEHN

Manus Classica, Secretary-Treasurer; Hi-Y-Ette; Choir; Sigma Sigma, President; Thespians.

MARILYN KOFRON

Hi-Y-Ette.

INEZ KRUIZE

Kappa Kappa Rho, Treasurer; Annual Staff.

JOHN D. KUCERA

HARRY LEE

Basketball '44-'45, '45-'46; Record Staff; Hi-Y; Student Council; Annual Staff.

JAMES LEHMKUHL

PAULINE LINDER

Kappa Kappa Rho; Hi-Y-Ette; Choir; G. A. A.; Lab Tech; Work on Red Cross Project.

EDWIN LUNDQUIST

Track '44, '45, '46; Football '44, '45, '46; Basketball '43-'44; Manus Classica; Hi-Y; Band; Marching Band; Orchestra; Music Club; Rifle Club; Art Club, Secretary-Treasurer; Cheer Leader.

ROBERT LYMAN

Baseball '46; Band; Marching Band; Orchestra.

LETTY McCABE

Kappa Kappa Rho; Hi-Y-Ette; Choir; G. A. A.; Student Council; Lab Tech; Chemistry Club.

DALE McCONNELL

Baseball '46; Basketball '43-'44, '44-'45, '45-'46; Globe Trotters; National Thespians; Class Officer, Vice-President, Senior Year; Thespians; Hi-Y, Secretary; Choir; "R" Club, Treasurer; Sigma Sigma; Student Council; School Dramatics.

WILMA MALECEK

Kappa Kappa Rho; Thespians; Record Staff; Hi-Y-Ette; Choir; G. A. A., Secretary; Lab Tech.

DONALD GREG MARTIN

Baseball '45, '46; Football '42, '43, '44, '45; Basketball '42-'43, '43-'44, '44-'45; Hi-Y; "R" Club, Secretary, President; Sigma Sigma; Student Council, President.

GLENN L. MEDHUS

Baseball '45, '46; Football '42, '43, '44, '45, Captain '45; Basketball '42-'43, '43-'44; Record Staff, Editor, Sports Editor; Hi-Y; "R" Club; Sigma Sigma; Student Council; Quill and Scroll; City Hi-Y Council; Class Officer, President; Sophomore Year.

LUCILLE MELCHERT

Manus Classica; Library Club.

ALLEN MILLER

Track '43; Football '43, '44, '45; Choir; "R" Club; Student Council; Art Club; Globe Trotters; Mixed Chorus.

DAVID MILLER

ELAYNE MILLER

Hi-Y-Ette; Orchestra; Choir; Art Club; Work on Red Cross Project; Mixed Chorus; Girls' Glee Club.

MARY MILLER

Manus Classica.

ROBERT MILOTA

Rifle Club.

R. DWAYNE MINOR

Thespians; National Thespians; Choir; Sigma Sigma, President; Lab Tech, President; School Dramatics.

RICHARD MITCHELL

Manus Classica, President; Record Staff, Sports Editor; Hi-Y; Sigma Sigma; Spanish Club; Globe Trotters; Class Officer, President, Junior Year.

ROBERT MUIR

Track '43, '44, '45, '46; Basketball '43-'44, '44-'45, '45-'46; Thespians; National Thespians; "R" Club, Treasurer; Aristotelian; Student Council; School Dramatics.

ROBERT NELSON

Track '45, '46; Hi-Y; "R" Club.

JEAN PAZOUR

Thespians; Hi-Y-Ette; Debate; School Dramatics.

OWEN PHELPS

Baseball '46.

DONNA PRATT

Kappa Kappa Rho; Library Club, Secretary; Lab Tech, Secretary; Chemistry Club.

RUBY PRATT

Kappa Kappa Rho; Manus Classica; Thespians; Aristotelian; School Dramatics.

EVELYN RAMMELSBERG

Band; Orchestra; Music Club.

JACK REINDL

Thespians; Hi-Y; Annual Staff, Editor; School Dramatics; Globe Trotters; National Thespians.

PHINEAS RICHMAN

Hi-Y; Chemistry Club; Spanish Club.

DARLENE RIGGS

Choir; Student Council; Work on Red Cross Project.

ESSIE MAE ROWRAY

Kappa Kappa Rho.

ROSE SAVAGE

GEORGE SCHAMBERGER

Baseball '45, '46; Football '42, '43, '44, '45; Basketball '42-'43, '43-'44, '44-'45, '45-'46; Manus Classica; Thespians; Hi-Y, Secretary, President; "R" Club; Sigma Sigma; Student Council; Globe Trotters.

SHIRLEY SCHERMERHORN

Choir; Lab Tech.

DOROTHY SCHMIDT

Kappa Kappa Rho; Record Staff.

AL SINDELAR

Track '44; Hi-Y; "R" Club; Student Council; Chemistry Club.

ARNO SINDELAR

Track '44, '45, '46; Basketball '43-'44, '44-'45; Record Staff, Assistant Editor; Hi-Y; "R" Club; Rifle Club, Treasurer; Aristotelian; Sigma Sigma, Treasurer; Quill and Scrol.

DWAINE SOUCHEK

Football '44, '45; Basketball '43-'44, '44-'45; Manus Classica; Hi-Y; Band; Marching Band; Orchestra; Music Club, President.

KATHRYN STEUBER

Hi-Y-Ette; Chemistry Club.

DONALD STEVENS

Band; Marching Band; Orchestra; Music Club, Treasurer.

VIOLET STUMPF

Kappa Kappa Rho, Secretary; Thespians, Secretary-Treasurer; Record Staff; Hi-Y-Ette; G.A.A., President, Treasurer; Sigma Sigma; Student Council; Lab Tech; School Dramatics; Work on Red Cross Project; National Thespians; Class Officer, Secretary-Treasurer, Sophomore Year.

FLOYD THOMPSON

Rifle Club; Lab Tech; Chemistry Club.

THELMA TRIMBLE

Thespians; Record Staff, News Editor; Debate; Orchestra; Choir; Music Club, Secretary-Treasurer; Aristotelian, President; Sigma Sigma, Treasurer; Lab Tech; Art Club, President; School Dramatics; National Forensic League; Class Officer, Secretary-Treasurer, Senior Year.

BILL TYLEE

Track '43; Baseball '43, '46; Football '42; Basketball '45-'46; Record Staff; Hi-Y; "R" Club; Sigma Sigma; Student Council; Spanish Club, Secretary.

PATRICIA VANOUS

Kappa Kappa Rho, President; Thespians; Hi-Y-Ette; G.A.A.; Student Council; Lab Tech; Annual Staff; School Dramatics; Glee Club.

BOB VON STEIN

Thespians; Hi-Y; Rifle Club; Chemistry Club; Annual Staff, Business Manager; School Dramatics; National Thespians.

ANNA MAE WEAVER

Library Club.

DALE WICKE

CAROL WIEGNER

Thespians; Lab Tech; Work on Red Cross Project.

JOHN WIENEKE

Choir; Rifle Club; Lab Tech; Spanish Club.

JOHN WILLIAMS

Track '45; Basketball '44-'45, '45-'46; Thespians; Record Staff; School Dramatics.

JOE ANN WORLEY

Kappa Kappa Rho; Hi-Y-Ette; Sigma Sigma; Lab Tech.

EARL YANECEK

Track '45; Basketball '43-'44, '44-'45, '45-'46; Thespians; Rifle Club; School Dramatics; National Thespians, Hi-Y.

RUTH ZIER

Thespians; Record Staff; Choir; Quill and Scroll; Cheer Leader; School Dramatics; Work on Red Cross Project; Student Council; Lab Tech; Chemistry Club; Glee Club.

HOMER ZINKE

Spanish Club.

BOB ZISKO

Baseball '45; Basketball '45-'46; Thespians; Hi-Y; Student Council; Lab Tech; School Dramatics.

DOROTHY ZOBIN

Manu; Classica; Thespians, President; Record Staff, Editor; Choir; G.A.A.; Aristotelian, Secretary-Treasurer; Quill and Scroll; School Dramatics; National Thespians; Glee Club; Class Officer, Secretary-Treasurer, Junior Year.

— SENIORS NOT PICTURED —

WAVA BUCKWHEAT

LAREW COLLISTER

JOHN HOFFMAN

ROSE SAVAGE



BATTIN'
THE BREEZE



EXTREMES



NO SPARKING
HERE



SMILE BOYS!



STILTS



WHAT'S NEWS



EGAD!



DA-DA



CHUMS



REALLY STACKIN' EM



PAUSE THAT REFRESHES



THE HARD WAY

Highlights and Shadows

SEPTEMBER: 1036 students enter Roosevelt . . . Sad day for many . . . Three new 12B's, Evelyn Rammelsburg, Phineas Richman, and Robert Green (World War veteran) . . . Football candidates sweating it out. Prospects for the team good . . . New 7B's wander around the halls like lost sheep . . . The Roughriders' first football game proves to be a success; they beat Charles City 7-0; Lee Bailey makes the only touchdown . . . Beam and Barnes are chosen senior class presidents . . . Lee Bailey new president of Student Council . . . Second game of the season is lost to speedy West Waterloo 31-12 . . . Sept. 28 Wilson defeats us 6-0. Lee Bailey and Don Martin cross the goal line only to have their plays nullified.

OCTOBER: Rubinoff plays his violin at an assembly and proves to be a master showman . . . After seven years of service to Roosevelt, Rosella Kelly leaves to marry. Martha Miller fills the vacancy . . . Leading parts for "Junior Miss" go to Ruby Pratt and Dolores Groff . . . After school these days the halls resound to "You Are My Sunshine" sung by the Frankies and Bings of our football team . . . Oct. 4 we beat McKinley 13-7 — Roosevelt's first city triumph of the season. Joe Gaskill's tackling and Ronnie Beam's pass-catching highlight the game . . . Hilda Greenburg and R. Dwayne Minor of Roosevelt and Patricia Tracy of Franklin, all-state actors, give a portion of the summer comedy, "The Importance of Being Earnest" . . . Chester Mau, new yearbook sponsor, announces that Bill Pfeffer, Barbara Champlin, and Jack Reindl will be the editors-in-chief of the 1946 annual . . . A new fad comes to Roosevelt. Girls now blow bubbles . . . Announcement is made that the murals which Roosevelt students painted last year now adorn the walls of Schick Hospital at Clinton . . . Oct. 12 gained revenge for 1943 loss by defeating Franklin 32-0 . . . Oct. 19 we are beaten by Clinton 26-7 . . . Oct 26 a big pep assembly with many skits to boost school spirit before the homecoming game . . . Dubuque spoils our homecoming by downing the Roughriders 20-6 . . . Martin was the chief ground gainer and Schamberger did a fine job of ball carrying, but the Roughriders were unable to complete many passes . . . Oct. 27 Teddy's Birthday Ball; Ronnie Beam crowned king; Carol Burks his choice for queen. Ladies-in-waiting were runners-up "Georgia" Schamberger and "Donna" Barnes . . . Pup'ls are trying two student-governed study halls on experimental basis for the last half of the semester.

NOVEMBER: On the second day of November we lose the last game of the season to Grinnell 27-6 . . . Gold star assembly held in honor of Sgt. Dave Holley and Sgt. Ralph G. Ballou, who died fighting for their country . . . The flu epidemic is spreading throughout Cedar Rapids. Absences average 200 every day . . . All school dance was held in our gym. Bill Tylee and Emmett Collister grand prize winners of the floorshow—Truth or Consequences. Their consequence was a contest between them in putting on women's clothing . . . Nov. 23 Roosevelt wins its opening game of basketball against Manchester 40-30 . . . Bill Pfeffer chosen chairman for East Iowa Hi-Y meet . . . Roosevelt comes in third in bond contest, selling \$2,966.10 worth of bonds and stamps . . . Nov. 30 Roosevelt no match for Marshalltown as they beat us 46-31.

DECEMBER: On Dec. 6 at an assembly Ruby Pratt, Dolores Groff, Dorothy Zobin, Jane Smith, Helenka Bartunek, Arno Sindelar, Bob Muir, Ronnie Beam, and Betty Michel were formally inducted into the Aristotelian chapter of the Na-

tional Honor Society. Guest speaker was Rev. J. Richard Wagner . . . Dec. 7 the Roughriders beat U-High of Iowa City 37-32 . . . Norma Malacek's intramural team won the girls' volleyball championship . . . Dec. 14 Roosevelt loses its first conference game as speedy Clinton wins 45-33 . . . Dec. 18 the vocal department, under the direction of Mrs. Kamradt, gives a Christmas concert for Roosevelt patrons . . . Dec. 21 the complete sixth hour is devoted to a Christmas assembly of singing, responsive readings, and a talk by Dr. Marvin Kober, pastor of St. Paul's Methodist church. In the evening of Dec. 21 Roosevelt defeats Franklin 37-36 in a thrilling game . . . Christmas vacation here at last. Eleven days for Roosevelt students to eat, sleep, and have fun.

JANUARY: Jan. 4 Roosevelt wins second city triumph as they defeat Wilson, 36-22 . . . Jan. 8 Roughriders bow to McKinley losing 33-31. First defeat for Roosevelt in the city race . . . Jan. 10 Award assembly. Outstanding awards are G.A.A. sportsmanship award which goes to Claudine Kent. Bill Pfeffer is named the outstanding Thespian. Jan. 12 Davenport falls to Riders 27-23 . . . Jan. 13 Seniors Baccalaureate is held at the Second Christian Church . . . Jan. 15 Class Day. Two pictures are presented to the school in memory of Mrs. Alta Loftus, eighth grade literature teacher, and William Vesely, former instrumental music director. Also on this day, Lee Bailey and Don Johannes receive awards for having straight A's and no absences or tardiness over a period of six years . . . Jan. 16 Dinner Dance is held at the Roosevelt Hotel. The theme "Vainities of 1946" . . . Jan. 17 Commencement exercises held at Memorial Coliseum. New white gowns for girls and dark blue for the boys. Featured speaker Byron S. Hollingshead, newly inaugurated president of Coe College . . . Jan. 18 West Waterloo overpowers Roughriders 44-30 . . . Dorothy Zobin and Glenn Medhus new co-editors of this semester's Record . . . Jan. 22 Roosevelt Roughriders run over a weak Monticello by rolling up a 41-15 score. Bob Muir is the high pointer in this game with 10 counters . . . Roosevelt loses 74 pupils during fall semester. Thirty-six drop out of school for good . . . Jan. 25 Dubuque Rams slip by Roosevelt's Roughriders 35-33 . . . Jan. 29 Thelma Trimble, 12A, brings recognition to Roosevelt when she wins an all school piano contest held at Franklin.

FEBRUARY: February 1 Riders gain city lead with 37-23 win over McKinley. Muir and Martin high pointers for the game . . . Student Council names Donald G. Martin president, Glenn Medhus vice president, Betty Buck secretary, and Bill Dale sergeant at arms . . . Feb. 5 Riders beat alumni 42-37. Emory Sample notched 13 points for the alumni. Other alumni who took part were Art Clark, Eddie Miller and Chuck Kemme. Lee Bailey and Keith Camizzi recent grads . . . Roosevelt gives generously in clothing drive to aid Europeans . . . Leslie R. Grigg former Roosevelt faculty member, awarded the position of supervisor of industrial arts in the Cedar Rapids schools . . . Feb. 8 Roughriders still retain city lead by defeating Wilson 40-28 . . . Eddie Moneypenny, survivor of Okinawa typhoon, returns to Roosevelt . . . Feb. 12 Norma Malecek's basketball team play Shueyville at Swisher bringing a victory of 37-31 . . . Feb. 15 John Anglin, tenor, gives a program of negro spirituals, semi-classical and classical music to both junior and senior highs . . . Also on the 15th Roosevelt Roughriders take a nose-dive in the Mississippi Valley Conference race, being defeated by Iowa City 40-30 . . . Bob Lovell chosen mayor of the day by Sea Scouts as the Boy Scouts took over offices of city government for one day. Other Roosevelt boys on the council are Bob Hale, Richard Hale, Richard Rabik, and Elmer Whitehair . . . Major B. D. Silliman gives a talk to social studies pupils about his experiences in Germany with the Nurenburg war crimes trials . . . Feb. 22 Roughriders lose to Franklin 22-20. This loss makes Roosevelt share the city title with McKinley . . . Feb. 26 Rev. Waldemar Argow, pastor of the Peoples Church, is guest speaker at a Thespian meeting.

MARCH: Mar. 1 Roosevelt loses to Iowa City 37-27. The game is lost when Schamberger goes out with a sprained ankle and Martin and Benson go out on fouls . . . A nine year old French girl is made happy by the boxes sent to her by Miss Litta Walker, English instructor . . . "Seventeen" magazine carries a picture of Delores Groff, the former teacher Miss Danielson, and Ronnie Beam working on a mural for the Red Cross . . . Juke boxes built by Vernon Lustic and Dale Wicke are on display in the office for a week. Under the direction of Theodore Anderson, woodwork instructor, these projects were conducted from September to February . . . Selection for the Iowa City high school art exhibit, which is to be held in April, are being made by Miss Houts, art teacher . . . Mar. 5 January grad Bill Pfeffer, freshman at Westminster College, Fulton, Missouri, close enough to shake hands with President Truman and Winston Churchill . . . Mar. 7 at an assembly for senior students the Latin class gives a chalk talk illustrating English words, and the Spanish class portrays native habits. Also on Mar. 7 Roosevelt defeats McKinley 27-21 in the first round of the district tournament at the Coe gym . . . Mar. 11 Earl Yanecek, Ruby Pratt, Roger Hartman, Barbara Champlin, Donna H'land, and Tom Freund are formally inducted into the inner circle of National Thespians . . . Roosevelt track squad starts spring workout. Six returning lettermen are Bob Barnes, dashes; Bob Nelson and Jim Edmunds, distance runners; and Dick Drew and Joe Gaskill, middle distance; and Bob Muir, last year's city champ at hurdles. Ray Yeakle, letter winner of two years ago, will be an entry in the pole vault . . . The Roosevelt Record receives for the second consecutive year a certificate of honor from the Iowa Tuberculosis Association for Christmas seal promotion . . . March 15 Roosevelt host for city instrumental contest. Sixteen firsts go to Roosevelt musicians. Herbert Wise, trombonist, winning the Lions Club scholarship in the brass division . . . Paul Hughes supply history and economics teacher and sophomore coach, has been replaced by Clarence Paulson, former Roosevelt coach, recently discharged from the navy . . . Mar. 26 Mrs. Grover Kamradt, senior high vocal music instructor at Roosevelt, leaves to represent the Mid-West on the committee for music in H. S. curriculum at the national music conference at Cleveland, Ohio which will last to April 2nd. Miss Ruth Webster, junior high music teacher, is also attending the conference . . . Baseball season starts. Many boys turn out for practices after school . . . Mar. 29 Spring school dance is held in school gym. Skeet Davis' orchestra furnishes music.

APRIL: National Thespian Society, under the direction of Miss Roberta Dinwiddie Sheets, presents its annual program of three one-act plays in the school auditorium. The plays are "A Deer of Another Color," by Earl J. Dias; "Never Mind the Baby," by Howard Buermann; "Objections Overruled," by William E. Jones . . . April 11 Dr. Byron S. Hollingshead, guest speaker at senior high assembly . . . April 25 an assembly to explain to the students about the electing of boys for "Boys' States."

MAY: On the second day of May an assembly is given to seniors by the Music and Instrumental classes, directed by Mrs. Grover Kamradt and Mr. Fleming . . . May 25 Junior-Senior Prom . . . May 31 Recognition day. Awards given to students for excellence in all types of school activities.

JUNE: Seniors eager to graduate, yet half regretful . . . Seniors present an interesting, traditional class day program . . . June 4 Dinner Dance for graduates held at Roosevelt Hotel . . . June 5 Commencement exercises.





Football

Bottom Row: Ray Yeakle, Vern Dvorak, Glenn L. Medhus, Jim Edmunds, Dick Drew, Bob Kephart, Bob Benson. Second Row: Ronnie Beam, Don Martin, Bob Barnes, George Schamberger, Lee Bailey, George Harl, Frank Sturm. Third Row: Jack Calahan, Al Miller, Art Van Cleve, Bob Lovell, Bill Dale, Roger Marks, Dwayne Soucek. Fourth Row: Chuck Hinton (Manager), Bryce Hahn, Marvin West, Junior Lundquist, Wayne Marchal, Fred Buchanan (Manager), Wayne Chadima (Manager). Fifth Row: Coach Hughes, Coach Cooper.

FOOTBALL 1945

Prospects for a successful football season looked bright for the Roosevelt team and Coach Cooper as ten letter men reported for the opening game with Charles City. Using a defensive game throughout, the team came in on the long end of a 7 to 0 score.

With a win under their hats the Roughriders came home to face a strong West Waterloo team. A pass, Schamberger to Benson, put the team ahead 6 to 0 as Bailey's kick was blocked. From there on out it was all West Waterloo. The final score Roosevelt 12, Waterloo 31.

The appearance of Don Martin bolstered the squad as they took the field against Wilson High. Martin and Bailey both hit pay dirt only to be called back in a heartbreaker. Wilson managed to cross the double marker once to win 6 to 0, and what proved to be a city title. Roosevelt placed second.

A scrappy Rider eleven had to come from behind to win its first city game from McKinley 13 to 7. Beam and Gaskill stood out on defense while Martin sparked the offensive.

Showing its potential power the home team rolled over the Franklin Thunderbolts 32 to 0, to the delight of the Roosevelt fans. For the first time Roosevelt fielded a hard charging line and a lightning backfield. The highlight of the game was the Bailey to Sturm pass play.

Again traveling to foreign soil the Riders lost to the powerful and fast Clinton River Kings 26 to 7. Roosevelt's lone score came on a pass as did the point-after-touchdown.

After setting up Roosevelt's only score Donny Martin had to be carried off the field because of a dislocated elbow suffered after a seventeen yard run. Bob Barnes scored on the next play giving the homecoming crowd a 6 to 0 half-time lead. In the second half Dubuque intercepting passes and more passes came from behind to win 20 to 6.

Traveling to Grinnell the Roosevelt squad was caught napping for its final loss of the year 27 to 6.

So ended the year's activities of the 1945 edition of the Roosevelt football team. Nine lettermen, including Captain Glenn Medhus, will leave the squad this year, leaving plenty of room for underclassmen to fill in.



Basketball

Bottom Row: Bob Melonovsky, Art Van Cleve, George Schamberger, Wayne Chadima, Lee Bailey, Keith Camizzi, Charles Hinton (Manager). Second Row: Glen Ebert, Bill Dale, Jack Carpenter, Frank Sturm, Bill Tylee, John Williams, Marvin West, Junior Lee. Third Row: Bob Zisko, Dale McConnell, Ronnie Beam, Bob Muir, Earl Yanecek, Bob Benson, Don Martin, Coach Carney.

BASKETBALL 1945-46

Building around six lettermen, Coach Carney had hopes of producing a cage team that would come through with a good record. Copping eight wins in their first 13 games, the Teds appeared to be on their way to a successful season. Then, suddenly, the Rider hopes took a turn-about as the cagers lost four of their last five games to end with a .500 rating.

Manchester afforded Roosevelt its first non-conference foe and the Teds showed promise in winning, 40-30. Marshalltown slightly dimmed the Teds' outlook by trouncing Carney's five, 46-31.

In their third non-conference tilt, the Riders staged a second half drive to succumb U. High of Iowa City 37-32. Schamberger, who set the pace in the contest, posted 14 points which was the highest individual total registered during the season.

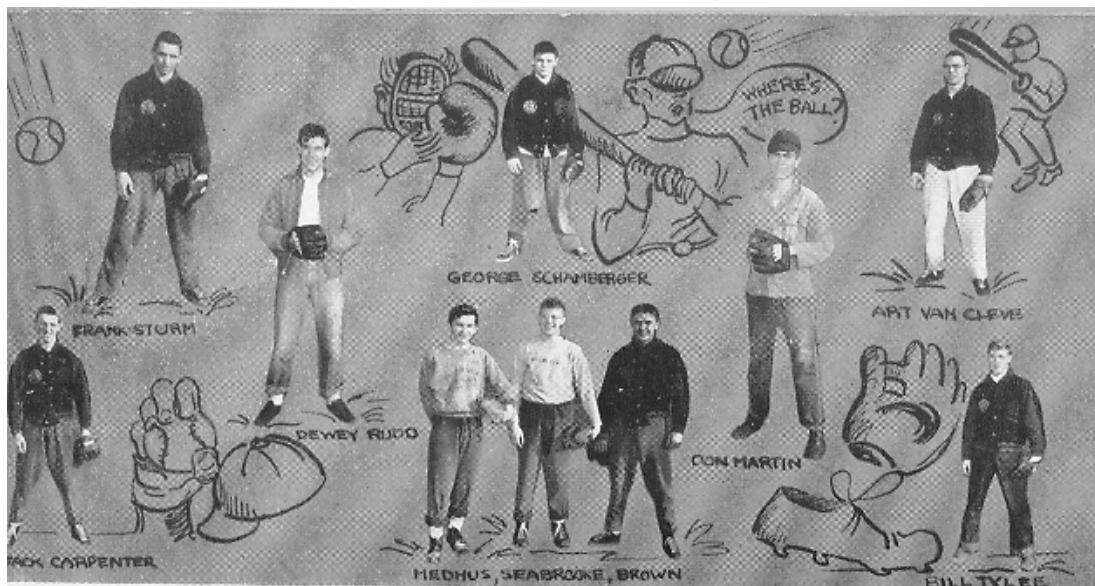
Clinton's high flying River Kings came next and took home a 45-33 victory.

Opening the city race against Franklin, Roosevelt managed to eke out a 37-36 win as Muir split the net after the final gun had sounded. A weak Wilson team was next and fell before the Ted's 36-22. Breezing along in first place, the Teds suddenly hit a snag when a fighting McKinley five nosed out a 33-31 win and took over the leadership.

Roosevelt's most boastful accomplishment came in the same week with the McKinley upset. Entertaining the always-strong Davenport cagers, the R. H. S. lads threw up a tight defense and sent the Blue Devils home with a 27-23 defeat. Then in rapid order the Teds lost to West Waterloo, 44-30; trounced Monticello 41-17; and were upset by Dubuque, 35-33.

Returning to city play, the Roughriders took over undisputed first place by beating McKinley, 37-23, and Wilson, 40-28. McKinley managed to gain a tie, however, as Franklin stopped a cold Rider five, 22-20. In two other regular scheduled games, the Teds lost twice to Iowa City, 40-30 and 37-27.

Entering the District meet at Coe, Roosevelt advanced to the semi-finals by downing McKinley 27-21. Then the same obstacle that cost them an undisputed city crown ended their tourney hopes. The much improved Franklin Thunderbolts, who scored at will, drove past the Teds, 40-28, to end the R. H. S. 1945-46 cage season.



Squad Members Not Pictured: Ray Petzelka, Manny Wise, Lee Bailey, Al Schamberger, Bill Stodola.

1945 State Baseball Champs

Baseball finally came to Roosevelt and in State Championship style. Late in the Spring of '45, the Roosevelt lads who had played for several years with the Butternut Bakers were given a chance to represent RHS in the baseball field after the boys stated that they would cop the title. It turned out to be a tough proclamation to carry out, but the Riders ably fulfilled their pledge.

With but a few days of practice Roosevelt met Davenport, a well-drilled team, and the Riders suffered a humiliating 14-4 defeat. Little did this falter their hopes, however, as the Teds downed Norway, 6-0, and Iowa City, 8-4, in preparation for tournament play.

Then Coach Clem Carney and Trainer Russ Schamberger took their squad to Solon for sectional play. Toddville, the Riders' first foe, was easily disposed of by a margin of 19-0. Martelle received the same dose, 11-1, and Solon fell before the Teds, 5-0. In three games the stellar pitching of Al Schamberger, Manny Wise and Ray Petzelka held the opposition to a total of three hits and one unearned run.

Advancing to the District, the Teds continued their winning ways by downing Sperry, 6-0, behind Ray Petzelka's no-hit pitching. Iowa City was next, and the Little Hawks took it on the chin, 5-3. Wyman offered Roosevelt more competition and the Teds were hard-pressed to win, 1-0. Thanks to Manny Wise's no-hitter, the lads were able to move on to the state meet.

Playing in the rain, a constant feat of the Teds, the boys slipped past Somers, 6-0. Elkader, with a record of twelve straight wins, was next on the list. The Ted's grabbed a two-run lead when Medhus and Petzelka scored on Al Schamberger's triple. After Elkader had garnered a run off Petzelka, who threw three-hit ball, Van Cleve put on the finishing touches by doubling G. Schamberger home from second.

Finally, the boys' dreams had come true. When Roosevelt faced East Waterloo, winner of 16 straight games, for the state title, Al Schamberger faced Dick Orth in the most sensational pitching battle ever held in a championship game. In the fifth inning Roosevelt got its break. George Schamberger singled, went to second on Manny Wise's sacrifice, and advanced to third on an error. Then when Orth took too much time winding up, George streaked for home—the Riders were in! Big Al finished off the job by tossing a no-hitter, the first in history for the event.





Seated: Marion Newhard, Lee Bailey, Bob Barnes, Art Van Cleve.

Standing: Don Clayter, Junior Lundquist, Betty Buck, Dorothy Nosek, Bert Cohn, Bill Pfeffer, Ronnie Beam,
Bill Tylee, Dewey Rudd, Bob Hale, Carol Barta, Patricia Nebuhr.

Student Council

Front Row: Ruth Zier, Helen King, Kathryn Murphy, Pat Carney, Betty Buck, Glenn Medhus.

Back Row: Roger Hartman, Dale McConnell, Don G. Martin, Albert Hutchins, Albert Sindelar, Bob Hale.





Aristotelian

Seated: Dolores Groff, Arno Sindelar, Thelma Trimble.
 Standing: Helenka Bartunek, Ruby Pratt, Bob Barnes, Betty Michel, Emmett Collister, Barbara Champlin, Dorothy Zobin.

Bottom Row: Patricia Vanous, Joan Clark, Jean Barvinek, Dolores Groff, Barbara Champlin, Donna Hiland, Betty Jean Stickley, Dorothy Zobin. Second Row: Ruth Zier, Lavona Dvorak, Wilma Mae Malacek, Marilyn Frasinger, Hilda Greenberg, Violet Stumpff, Ruby Pratt, R. Dwayne Minor, Emmett Collister, Tom Freund. Top Row: Bill Williams, George Schamberger, Jack Reindl, Roger Hartman, Warren Endsley, John Williams, Dale McConnell, Bob Zisko, Earl Yanacek, Bob Benson, Bob Muir, Albert Hutchins.

Thespians





Bottom Row: Norma Malecek, Evelyn Hall, Violet Stumpff, Carol Burks, Mary Ann Taylor, Anita Heath, Mary Kenyon. Second Row: Jean Drescher, Barbara Klein, Betty Buck, Vivian Prasinger, Wava Buckwheat, Jean Zobl, Nancy Pealer, Doris Haldy, Mary Allee McCabe, Evelyn Eurl. Third Row: Pat Vanous, Shirley Thompson, Jo Ann Worley, Jeanine Layer, Marilyn Humbert, Bonnie Apland, Mildred Koehn, Donna Hilland, Donna Smith, Lyla Buckwheat. Top Row: Mary Gooden, Jean Hoffman, Pat Nebuhr, Beverly Nevins, Lavona Dvorak, Madonna Myer, Ruth Conrad, Janet Brown, Lois Turner, Helen King, Ruth Coonley.

Hi-Y-Ettes

Bottom Row: Joan Clark, Noreen Powell, Pat Robinson, Jean Snow, Barbara Steele, Rebecca Haddad, June Littleton. Second Row: Joyce Wohlk, Phyllis Apland, Betty Michel, Eileen Eyer, Pat Carney, Mary Buxton, Ellen Soucek, Shirley Perry, Margie Siegle, Lois Hinton. Third Row: Marilyn Paseka, Margaret Schaffer, Lavonne Gibson, Mary Rosdail, Jacqueline Poland, Lois Listebarger, Helen Clyde, Alberta Nichols, Pat Curry, Beverly Bowers, Barbara Champlin, Betty McCabe. Top Row: Marilyn Miller, Wilma Malecek, Virginia Vavra, Dorothy Waline, Joan Hauskins, Barbara Birch, Dorothy Nosek, Genice Steffenson, Beverly Droz, Kathryn Rainbolt, Marilyn Prasinger, Thelma Taylor.





R Club

Bottom Row: Charles Hinton, James Edmunds, Dewey Rudd, Al Miller, Jack Carpenter, Second Row: Bill Brown, George Schamberger, Dick Drew, Glenn Medhus, Bob Barnes, Bill Tylee, Bob Kephart, Albert Sindelar, Third Row: Dale McConnell, Don Martin, Arno Sindelar, Bob Benson, Bob Nelson, Frank Sturm.

Bottom Row: Lyla Buckwheat, Mary Kenyon, Marilyn Lemar, Jean Zobl, Betty Buck, Mary Ann Taylor, Anita Heath, Beverly Teausant. Second Row: Luella Steggell, Barbara Birch, Joan Hauskins, Shirley Marsh, Dorothy Nosek, Barbara Kline, Jean Dresher, Violet Stumpff, Dolores Groff, Dorothy Zobin, Shirley Drew, Third Row: Loudeam Andrews, Mary Gooden, Pat Curry, Ruth Conrad, Lois Jean Listebarger, Kathryn Murphy, Marian Bain, Wilma Malecek, Norma Malecek, Lavona Dvorak, Helen Clyde, Mary Alice McCabe, Lois Hinton.

GAA





Rifle Club

Bottom Row: Wayne Marchal, Bill Williams, Bob Hale, Charles Hinton, Bill Sportel, Dick Murdock, Norman Bowers. Second Row: Bob Von Stein, Tom Freund, Bill Dale, Glen Ebert, Don Krohn, Jim Miller, Junior Roloff. Third Row: Francis King, Floyd Thompson, Elmer Whitehair, Earl Yanecek, Arno Sindelar, Tom Forbes, Bob Milota.

Bottom Row: Loudeam Andrews, Barbara Birch, Marilyn LeMar, Mary Kenyon, Jean Workman, Bonnie Apland, Janet Brown, Jo Ann Taylor. Second Row: Bill Hilborn, Kathryn Murphy, Lois Turner, Dick Drew, Hilda Greenberg, Lois Jean Listebarger, Homer Zinke. Third Row: Dick Mitchell, Phineas Richmond, John Wieneke, Allen Fisher, Russell Wiley, David Bruns.

Spanish Club





Manus Classica

Bottom Row: Betty Lou Comreid, Joan Hauskins, Delores Helmich, Ruth Conrad, Betty Ann Shank. Second Row: Charlotte Barnes, Helen Clyde, Vivian Frasinger, Betty Buck, Lois Hinton, Marjorie Seigle, Loraine Bomkamp, Elaine Bauer. Third Row: Betty Burke, Virginia Vavra, Mary Ethel Buxton, Phyllis Apland, Doris Kullander, Ellen Soucek, Evelyn Deetz, Shirley Allen. Top Row: Bob Peterson, David Lubben, Kenneth Johnson, Allen Fisher, Robert Pierson, Jeene Gaines, Jane Lubbock, LaVonne Krug.

Bottom Row: Jean Barvinek, Jeanine Layer, Shirley Drew, Barbara Champlin, Betty McCabe, Wayne Chadima, Emmett Collister. Second Row: Mary Alice McCabe, Ruth Zier, Ruth Coonley, Jean Rogers, Jean Floyd, Donna Pratt, Ed Winslow. Top Row: R. D. Minor, Phineas Richmond, Bob Von Stein, Floyd Thompson, Roger Hartman, Bill Hilborn, Bob Lovell, Edwin Lundquist.

Chemistry





Bottom Row: Violet Stumpff, Marion Newhard, Don Johanos, Dorothy Zobin, Glenn Medhus, Marvin Sedlacek, Shirley Drew. Second Row: Ruth Zeir, Patty Helbig, Jeannine Layer, Thelma Trimble, Betty Michel, Mary Jo McNeill, Phyllis West, Elizabeth Froman, Lee Bailey. Top Row: Harry Lee, Jh., Emmett Collister, Harold Sanders, Don Spooner, Arno Sindelar, Jerry Newport, Don Krohn.

Record

Bottom Row: Ruth Zeir, Pat Helbig, Violet Stumpff, Jeannine Layer, Dorothy Zobin, Thelma Trimble, Shirley Drew, Dolores Antles, Mary Alice McCabe. Second Row: Don Krohn, Harry Lee, Jr., Emmett Collister, Harold Sanders, Glenn Medhus, Arno Sindelar, Jack Carpenter, Art Van Cleve, Bob Heaton. Third Row: Barbara Morr, Barbara Klein, Dorothy Schmidt, Wilma Malecek, Jean Zobl, Barbara Birch, Lois Jean Listebarger, Betty Michel, Ruth Coonley, Jean Harger, Marilynne Frasinger. Top Row: Don Spooner, Tom Forbes, Dick Mitchell, Norma Malecek.





Sigma Sigma

Bottom Row: Violet Stumpff, Nancy Pealer, Betty Novak, Doris Haldy, Shirley Thompson, Katherine Shurtz. Second Row: Jean Zobl, Jean Barvinek, Barbara Birch, Lois Jean Listebarger, Patricia Newlin, Dorothy Nosek, Barbara Morr, Shirley Marsh, Thelma Trimble, Barbara Klein, Norma Malecek. Third Row: Jack Carpenter, R. Dwayne Minor, Russell Wilcy, Art Van Cleve, Bob Heaton, Bob Lovell, Warren Endsley, Bryce Hahn, Jim Harrington, Bob Benson, Allen Fisher, George Schamberger, Roger Hartman, Dick Drew, Dale McConnell, Glenn Medhus, Dick Mitchell, Emmett Collister, Tom Freund, Bill Hilborn. Top Row: Mary Alice McCabe, Marilyn Humbert, Evelyn Hall, Jeanine Layer, Jeanne Drescher, Mary Kenyon, Delores Antles, Shirley Graw, Betty Stickle, Joe Ann Worley, Mildred Koehn.

Art Club

Bottom Row: Betty Hunter, Elaine Curtis, Otilia Anderson. Second Row: Delores Antles, Beverly Nevins, Loudeam Andrews, Jean Rogers, Helenka Bartunek. Top Row: Bill Riley, Don Shaheen, Warren Endsley, Dwayne Hendryx, Jim Miller, Dean Cline.





Hi-Y Bottom Row: Phineas Richmond, Wayne Chadima, Edwin Lundquist, Dick Drew, Emmett Collister, Glenn L. Medhus, Bob Hale, Bob Barnes, Richard Mitchell. Second Row: Art Van Cleve, Don Blood, George Schamberger, Bill Brown, Alan A. Seabrooke, Kenneth Johnson, Bob Kephart, Joe Gaskill, Charles Hinton. Top Row: Russell Wiley, Jack Carpenter, Roger Marks, Arno Sindelar, Bob Nelson, Bob Benson, Bill Dale, Frank Sturm, Dale McConnell.

Quill And Scroll

Seated: Dorothy Zobin, Don Johanos, Marvin Sedlacek, Ruth Zier.
Standing: Lee Bailey, Arno Sindelar, Glenn L. Medhus.







HOMECOMING

Roosevelt's homecoming was a gala affair this year. For the first time in a number of years, the student body was really behind the team.

The festivities started with a pep rally held at night around a bonfire. By the time the fire was well underway, several hundred students had assembled. One by one the members of the team gave their opinions on the outcome of the game. Later a snake-dance and a parade downtown ended the rally.

Teacher skits portraying the actions of that king of the yo-yo crowd, Mr. Hughes, combined with the activities of Lee Bailey and his partners in song delighted and amused the crowd that attended the pep assembly. Box office appeal was most prominent in Bill Brown, however, as he stole the show.

Time for the game rolled around and pep spirit continued. Too much school spirit must be as bad as too little, for the team went down in defeat that night.

The dance after the game was a novel affair with Ronnie Beam, elected king and Bob Barnes and George Schamberger acting as ladies-in-waiting. Jean Harger entertained the court with novelty dances, while Dale McConnell, Bill Pfeffer, Don Johanos, and Jim Edmunds blended their voices together in song for His Majesty.





NATIONAL THESPIANS

The National Thespian Dramatic Honor Society for high schools was founded in 1929. The purpose of the society is to create a more active and intelligent interest in high school dramatics. It encourages students to attain a better mastery of language, to develop poise and to appreciate dramatic literature.

The Society at Roosevelt dates back to June, 1943, when the club, under the direction of Roberta Sheets, obtained a charter and ten members were initiated. Since that time, about thirty students have become members.

Membership in the society is not only a reward for work already done in dramatics, but is also evidence that the student is interested in dramatic art.

Dramatics at RHS reached an all-time high this year with the presentation of the following plays:

JUNIOR MISS was a great success. The play centered around the pranks of Judy Graves and her friend Fuffy, played by Ruby Pratt and Delores Groff, respectively. The rest of the able cast included R. D. Minor and Marilyn Frasinger as Mr. and Mrs. Graves, Jack Reindl as Uncle Willis, Roberta Hill and Bill Pfeffer as Ellen and J. B. Curtis, and Lavona Dvorak as Hilda, the maid.

R. D. Minor, stage manager, sets the scene for **OBJECTIONS OVERRULED**, an enjoyable comedy. Hilda Greenberg and Eddie Hutchings, portraying a young married couple, carry out a pantomime picnic. Marilyn Frasinger plays the friend who gives away the plot at the end.

A DEER OF ANOTHER COLOR is based on a legendary incident in the life of William Shakespeare. The cast includes Will Shakespeare, depicted by Bob Dodd; Sir Thomas and Lady Lucy, Tom Mann and Mary Alice Rundall; Gates, played by Eddie Moneypenny; Dame Coakley depicted by Betty Michel; and Marilyn LeMar and Jean Workman as Feathersley and Rosalind.

NEVER MIND THE BABY deals with the exploits of William Peabody, Roger Hartman, who is called in by Mrs. Bliven, Jean Barvinek, to mind the baby while she goes after groceries. Maxine Farley and Evelyn Burt complicate matters by bringing a policeman, Clyde McMillan. Dr. Wilson, characterized by Bob Shorman, quarantines the house and catches Doris Bliven, played by Joan Clark, and the grocery boy, George Schamberger.

The season concluded with **YES AND NO**, a comedy of English life. The characters are Rector Jarrow and his wife, depicted by R. D. Minor and Evelyn Burt; their two daughters, Jo and Sally, portrayed by Hilda Greenberg and Marilyn LeMar; the Cockney maid of all work, Ruby Pratt; the young curate, Bob Dodd; and a friend of the family, Bob Benson, who wants to marry Jo.



FLABBY



CINDER MEN



CASANOVA



STRETCH



GOSH!



AIN'T THEY CUTE



GUNDERS



ROOT OF ALL EVIL



BURLESQUE KINGS



BUDDIES



SAD GOODBYE



SPRING FEVER



MUSIC, MAESTRO'S, PLEASE!



RED CROSS ARTISTS



PRINTSHOP HOBOS

The Annual Staff Acknowledges
Its Appreciation To:

Tru-art Engravers

Mr. Hoadley

Metropolitan Supply

The Photographers

The Faculty

The Student Body

Glenn Medhus

The Roosevelt Record

The Office

Students who were not on the staff,
but who helped in various ways.

