

Edited and printed by students  
of Roosevelt High School  
Cedar Rapids, Iowa



The likeness of Teddy Roosevelt keeps a constant watch as Roosevelt pupils go along their busy way. His energetic spirit and understanding heart live on. Time and generations pass swiftly, but T. R. keeps his faithful vigil.

# ROOSEVELT

# 1952

High school days are regulated by the never-faltering hands of the clock. Each moment marks an experience, soon to be a memory.

# ROUNDUP





**"Clocking in" not later than 8:15 a.m. are fifty-six Roosevelt high school faculty and staff members. Their time is our time.**



Fred J. Kluss, principal, and Harry K. Burmeister, assistant principal of Roosevelt high school are constantly confronted with many everyday problems arising from school activities. Such details as working our schedules, directing Student Council, and handling finances are a few of their varied tasks.



Whether it be friendly advice or an aspirin you're seeking, Miss Addie Zila, dean of girls, is there to help. Dean of Boys Harold Myron always seems to make room in his office for one more, when the fugitives can't seem to study elsewhere.

If you've lost your way, your activity ticket, or your report card, chances are you have sought the aid of Mrs. George Hiding, Miss Marilyn Allen, or Miss Wilma Morgan, the efficient and "much to be praised" office staff of Roosevelt high school.





These pleasing smiles depict the satisfaction of the senior high faculty, who are the very backbone of Roosevelt school. Front row, left to right, are Paul Jones, Miss Jeannette Williams, Mrs. Harna Shinn, C. E. Eernisse; back row, Robert Hutchinson, Ross Miller, and Roy Marsh.

Senior high teachers, front row, Chester Mau, Miss Mary Rickey, Mrs. Ellen Tortensen, Miss Lucille Duncan, Miss Ida Braden, Theodore Anderson; and back row, Miss Lorene Harrington, Miss Litta Walker, and Miss Jessie Chambers are seen in Sagamore hall pausing for a moment from their busy routine.

Here we see faculty members, front row, Irving Ebinger, George Hiding, Joe Stolar; and back row, Miss Nelle Martin, Miss Anne Grissel, Mrs. Lorene Chehak, Miss Elizabeth Tarrill, and Miss Bernice Moffit graciously posing for Roosevelt's annual photographer at the close of another school day.



9:20



**STUDENT COUNCIL**  
 Student Council members accomplished many things during the year. They planned pay assemblies, had a tag day to finance a Christmas tree, conducted the activity ticket sale, and helped keep order in and around school. Officers the first semester were Doug Wiley, president; Sheryl Stephan, vice president; Yvonne Wolleat, secretary; and Karl Kullander, sergeant-at-arms. The second semester Karl Kullander was president; Ronnie Popelka, vice president; Marilyn Jones, secretary; and Bill Holsinger, sergeant-at-arms. First row: Bill Holsinger, Marilyn Jones, Ronnie Popelka, Karl Kullander; second row: Yvonne Wolleat, Doug Wiley, Sheryl Stephan, all first semester officers.



**Y-TEEN**  
 Y-Teen's program this year had a wide appeal, whether social or serious. Most of the meetings were regular business meetings with movies, although there were some boy and girl parties. The Penny Carnival, which was a money making inter-club project, was a big success. Roosevelt sponsor is Miss Eva Wainwright. Front row: Thelma Pickerill, Diane Wagner, Sheryl Stephan, Marilyn Jones, Juanita Robertson; second row: Jacqueline Prasil, Dolores Petsel, Elaine Anderson, Beverly Briles, Irene Gruender, Nancy Clauson, Kathy Miller, Mary Lou Cover; third row: Joan Kunzman, Joan Irwin, Bonnie Kraus, Marlene Rammelsberg, Sandra Lipp, Kay Bootjer, Roberta McKee, Sandra Miller, Shirley Sorenson, Onnalee Allen, Marilyn Worchester, Jane Montgomery.

**RIFLE CLUB**  
 The purpose of Rifle club is to teach its members safety with firearms and marksmanship. Aim is to maintain a membership of twenty in the club. Once a week members have practice at the range in the police station. Here, too, is where they compete with other schools in this area at rifle matches. Two matches each year are with other United States schools. U.S. medals are awarded for good marksmanship, and a letter is awarded each year to the most deserving senior. Roy Marsh is sponsor. Second row: Leslie Ford, Don Henecke, Michael Kane; Front row: Dick Jensen, Bill Brown, Keith Drexler, Bill Siver, Tom Niebas.



As the wall clock clicks at 9:20, pupils trek to scheduled club groups – twenty-one in all, with bi-weekly meetings. Highest governing body is Student Council.

#### LIBRARY STAFF

The Library staff is a group of voluntary workers who assist Miss Nelle Martin in the operation of the library. The girl who is assigned to the desk each hour signs pupils in and out, keeping a record of each pupil coming from study halls. She checks books in and out, recording each pupil's card.

Often she helps pupils in use of card catalogue or helps them find a book on the shelves. The duties, though simple, are important and take time.

Front row: Marilyn Pratt, Lois Pratt, Donna Crossett; second row: Janet Patton, Donna Newkirk, Kathy Miller, Beth McDonald, Emrie Usher.



#### CAMERA CLUB

Camera club was reorganized this year under the direction of Joseph Stolar with the purpose of furthering the development of photography. Most of the pictures are taken outside of school, and the developing is done by individual members because of the expense.

Each year the Kodak Corporation of America sponsors a National High School Photographic Association contest. The Roosevelt club has received an honorable award for the last five years in this contest.

Left to right: Arley Ask, Mildred Novotny, Edna Yondracek, Evelyn Proffitt, Carol Ann Roberdee, Jean Benest, Joanne Slocum, Leo Meyer.



#### USHERS CLUB

The only service club of Roosevelt is the Ushers club consisting of twenty-five members. The girls are from ninth through twelfth grade. Duties of the members, besides ushering, are handing out programs, and selling and taking tickets. The club ushers at almost all school affairs. Miss Nevah Prior and Miss Nelle Martin direct the group.

Front row: Emrie Usher, Norma Sheldon, Alice Lyman, Doris Melenovsky, Marilyn Jones, Carolyn Shank; second row: Marjorie Sindelar, Carol Morrison, Kay Herrbach, Beve Sipe, Jane Montgomery, Emily Handlik, Diane Bishop, Roberta Popinger; third row: Shirley Randall, Janice Stodola, Pat Steggall, Joyce Marsh, Mary Lou Paulsen, Ann Rogers, Jean Schirm.





**ARISTOTELIAN**

To be in the national scholastic honor society of Roosevelt, one must be in the upper fourth of his class. Membership is based on scholarship, leadership, character, and service. A pin consisting of a keystone and a flaming torch is presented to each new member as the insignia of membership in Aristotelian.

Front row: Jim McGuire, David Anderson, Tom Wharton, Doug Wiley; second row: Sally McEveney, Elaine Anderson, Janice Serbouset, Marilyn Jones, Helen Shipe, Pat Taft, Irma Jean Minder; third row: Charlotte Condon, Mary Lou Cover, Alice Smith, Mardelle Perry, Jane Montgomery, Janet Herrbach, Emma Jane Zamastil, Janet Hauser, Patty McEveney.

**NATIONAL THESPIANS**

The National Thespians society is devoted to the advancement of dramatic arts in the secondary schools. Those belonging to the society receive services and material on phases of play production, such as selection, casting, rehearsals, acting, lighting, stagecraft, make-up, costuming, publicity, and handbills.

The national society encourages those with special talents to further their interests in college. Members of Thespians must earn ten points to qualify for this higher honor.

Front row: Carol Canady, Sheryl Stephan, Lynda Woodford, Jim Bailey; second row: Russ Merrifield, Helen Shipe, Mardelle Perry, Jim Miller, Jack Ilten, Ronald Popelka, Jimmy Williams, Jane Montgomery.

**LOCAL THESPIANS**

You don't have to be an actor or actress to be inducted into the Thespians troupe. Points are given for working on the stage crew, costumes, props, lighting, and also for business aid. Three points are required for membership, or an equivalent of thirty hours of work.

The club sponsored an assembly in February in co-operation with UNESCO week. The play festival in March and the annual formal banquet in May climaxed another year. Miss Roberta Sheets is sponsor.

Front row: Nancy Meyn, Shirley Ross, Joanne Lundquist, Barbara West, Beve Sipe; second row: Gary Simon, Janet Hauser, Stan Roseberry, Karl Kullander, Alice Lyman, Theima Pickerill, Joan Kunzman, Janet Herrbach.

#### QUILL AND SCROLL

First requirement for Quill and Scroll, honorary society for high school journalists, is to have a nose—a nose for news, that is. To be a member in this society one must have worked two semesters on the staff of the school newspaper, to have done outstanding work in writing, editing, business management, or typography, and to be in the upper scholastic third of his class. Mrs. Lorene Chehak is Quill and Scroll sponsor.

Front row: Jack Ilten, Charlotte Condon, Carroll Baumgartner, Janet Herrbach; second row: Patty McEveney, Sally McEveney, Doug Wiley, Jane Montgomery.



#### G.A.A.

A member of the Girls Athletic Association must earn five hundred points in various sport activities and then she is eligible for a letter. In local G. A. A., she must earn one hundred and fifty points in intramurals, but no letter is received. Miss Eva Wainwright is sponsor of G. A. A.

Front row: Maureen Homer, Virginia Rohrbacher, Sheryl Stephan, Jo Ann Dunlop, Marilyn Smrcek, Joyce Brown, Carolyn Smrcek; second row: Kathy Bush, Mary Lou Paulsen, Shirley Kemme, Marlene Cahalan, Mildred Smith, Pat Taft, Marilyn Blessing, Emma Jane Larson, Marlene Rammelsberg, Joan Kunzman, Marilyn Jones, Janet Villers, Joanne Lundquist, Beve Sipe, Shirley Meffard.



#### 'R' CLUB

The Lettermen club's foremost purpose is to maintain the standards of a true athlete, the responsibilities of a true athlete, and fulfill the obligations of such an athletic organization in the school. The qualifications and duties of an athletic competitor and award winner for membership in the club is to have earned a major letter.

Points are given for playing basketball, football, track, baseball, tennis, golf, being manager of a team, and for attendance at practices. After two hundred points are earned, a letter is awarded. Sponsor is S. A. Cooper.

'R' club officers, l. to r., Gary Droz, Doug Wiley, Eldon Hasley, Jim Hess.





#### MANUS CLASSICA

Manus Classica, Latin club, has the purpose of furthering the members' knowledge of classical subjects and acquainting them with facts of current classical interest. To be a member of this club, which is affiliated with the Junior Classical League, one must have at least a "C" average. Miss Jessie Chambers is sponsor.

Front row: Roberta Stracke, Sandra Harris, Gloria Gard, Margaret Detlefsen, Joanne Hays; second row: Larry Froeberg, Tom Miller, Jack Hudson, Garland Hoskin, Leland Ireland.



#### LA ESPANITA

The purpose of Spanish club is to acquire a better understanding of the Spanish language and of Spanish-speaking countries by using Spanish in games, songs, and plays. Miss Elizabeth Terrill is faculty sponsor.

The highlights for 1951-52 were two plays, a skit for pep assembly, and a party at the Chandler home. Officers are: president, Alice Smith; vice-president, Jacqueline Shearer; secretary, Evelyn Petrick; treasurer, Marilyn Worcester; and sergeant-at-arms, Gerald Clouse.

Front row: Evelyn Petrick, Lois Rittgers, Judy Chandler, Jacqueline Shearer; second row: Dean Beastron, Muriand Moran, Steven Chandler, Gerald Clouse, Alice Smith, Sally McEveney, Patty McEveney, Judy Thomas.



#### SIGMA SIGMA

Sigma Sigma was organized in Roosevelt high school in the 1930's. The club aims to stimulate and to promote the interest of youth in the problems of modern society. This year the club has discussed both national and foreign affairs. There are forty-six members, and Mrs. Ellen Torsenson is sponsor.

Front row: Norma Thomas, Pat Steyne, Karla Jata; second row: Yvonne Waskow, Emma Jane Zamastil, Janice Serbousek, Alice Lyman, Janet Hauser, Bonnie Kraus, Thelma Pickertill, Maurene Homer; third row: Doug Houghton, Wayne Selzer, Dick Fuller, Vernon Cerveny, Dick Harmon, Wayne Riley; fourth row: Arley Ask, Carroll Baumgartner, Leo Meyer, Kenneth Castek.



#### KAPPA KAPPA RHO

Kappa Kappa Rho is a club for girls who are taking a commercial subject. The purpose is to study business problems and interests, to broaden the pupils' outlook on business life, and to bring about a fellowship among commercial students.

A different committee plans and carries out the program each month. A variety of programs are presented throughout the year, including skits, panel discussions, style shows for office attire, interviews, and outside speakers. The most enjoyed social event of the year is the initiation party in the fall. Sponsor is Miss Jeanette Williams.

Front row: Mary Lou Cover, Juanita Robertson, Doris Melenovsky, Jo Ann Bradley; second row: Gloria Wiegner, Doris Larson, Shirley Kemme, Sandra Baker, Patricia Heinen, Marilyn Hennings, Violet Ronnenberg; third row: Joyce Hennings, Pat Rowell, Mary Lou Reed, Carol Roberdee, Irene Gruender, Lois Pratt, Donna Crossett, Lorene Applegate.

Front row: Donna Newkirk, Janice Stodola, Jacqueline Prasil, Charlotte Dostal; second row: Joan Mason, Hazel Bissell, Darla Hick, Nadine Homer, Bette Sullivan, Elaine Anderson, Delores Cabalza; third row: Ann Lefebure, Roberta Popinger, Joyce Bruns, Elaine Polk, Joyce Greider, Pat Steyne.

#### BIOLOGY CLUB

Marilyn Pratt was chosen the first "Queen of Biology". Ability and knowledge in the field of biology was the basis of selection. Publishing the annual bulletin on nature studies is the biggest project accomplished by the club.

The Iowa State Science convention highlights the year. Wilson, a local school, was host to the convention this year. Students completing extra projects were invited to attend and exhibit their wares. Stephen Pattee is sponsor.

Front row: Shirley Mefferd, Mary Ann Hanson, Bever Lee Yanda, Kay Herrbach; second row: Marilyn Pratt, Beverly Fry, Janet Pattee, Mary Alice Brodie, Olga Jiroutek; third row: Ronald Ulmstead, Ellis Wiggins, Mr. Pattee, sponsor, Lary Young, George Ehrenberger.





**F.T.A.**  
 Future Teachers of America, organized in R.H.S. in 1950, is part of a nationwide movement to encourage fine and able young people to dedicate themselves to the teaching service. Sponsor is Mrs. Ellen Torstenson.  
 Front row: Hjordis Anderson, Janice Serbouset, Carol Canada, Tom Wharton, Judy Chandler, Shirley Ross;  
 second row: Mrs. Torstenson, Gloria Wiegner, Brenda Beneke, Janet Patten, Marilyn Jones, Joan Irwin, Sharon Owen, Norma Sheldon, Stan Roseberry, George Johnson, Clifford McClean, Ernest Bayer, Bill Siver, Vernon Carveny, Dave Randolph, Carroll Baumgartner; third row: Norma Mitchell, Joann Bradley, Joanne Lundquist, Doris Malenovsky, Joan Kunzman, Alice Smith, Phyllis Mann, Florence Elam, Jane Montgomery.



**MUSIC CLUB**  
 The purpose of Music club is to foster music activities in the school, plan the social functions of the music department, and assist in the promotion of ticket sales and raising of funds needed by the band and orchestra. The club has thirty-five members whose most important activities this year included Christmas card sales, the promotion and preparation of the annual winter concert, the fall initiation, and the club party. R. Cedric Anderson sponsors the group.

Front row: Ann Wagner, Barbara Davis, Mary Lou Cover, Brenda Beneke, Barbara Roberdee, Pat Jones, Janet Patten, Shirley Fuller, Gwen Caldwell; second row: Norma Sheldon, Shirley Barker, Beverly Clark, Janet Bausch, Sandra Harris, Helen Waline, Pat Taft, Diane Bishop, Jacqueline Shearer; third row: George Ehrenberger, David Snyder, Daniel Helmich, Eddie White, Keith Karr, Allen Postel, Leland Ireland.

Front row: Mary Ann Brown, Carolyn Shank, Hjordis Anderson; second row: R. C. Anderson, Ed Davis, Jack Hudson, Tom Barta.

#### ART CLUB

The slogan of the Art club is I.T.I.O.A., a secret that the club members won't reveal. The purpose of the club, sponsored by Miss Lorene Harrington, is to promote interest in art and help students to further art as a career. The enrollment is limited to twenty-five members, and a student must have a "B" average and be in an art class if he wishes to belong to the club.

Top picture: Beverly Rawson, Doris Petrak, Marlin Fisher, Dave Henecke, Dolores Frank, Eleanor Morris, Gwen Caldwell, Sharon Owen; seated: Edna Swick, Jim Williams.



The members did oil painting to be displayed at the Veterans Hospital at Iowa City. They are also making a school calendar which shows the different activities during the year.

Second picture: Dick Harman, Donald Edgington, Pat Heinen, Bill Ronnenberg, Barbara West, Dolores Cabalka, Charlotte Dostal, Virginia Craig, Joan Coyle, Shirley Barker.

#### TEEN AGE BOOK CLUB

T.A.B. is sponsored by Miss Esther Chapin through the English classes. All pupils are privileged to order books priced from 25 cents to 35 cents. At the end of the semester pupils receive one dividend book of their choice for every four books purchased during the semester.

T.A.B. is not considered a regular club and does not hold regular meetings, only infrequent business meetings. There are no social activities and no dues.

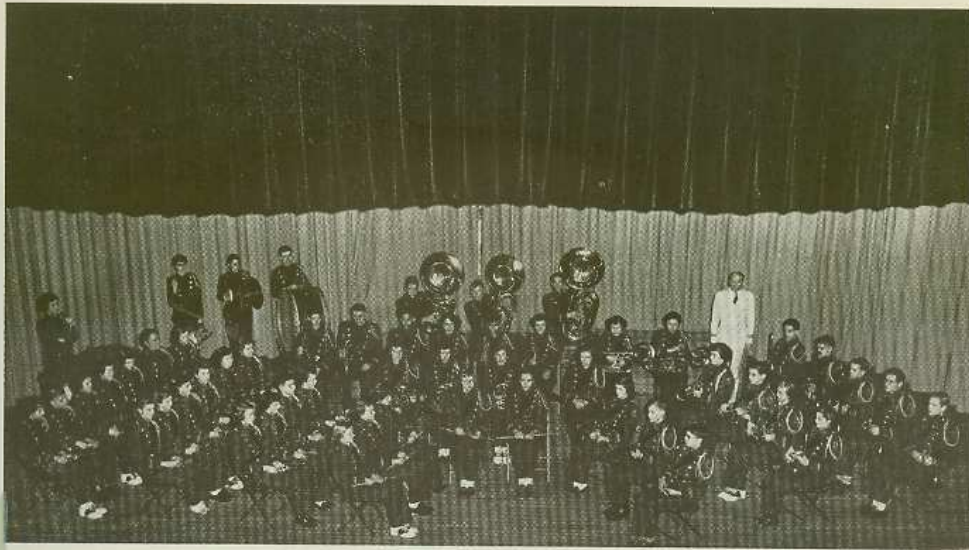
Front row: Janice Serbousek, Jacqueline Prasil, Norma Sheldon, Pat Taft, Shirley Mefford, Joyce Brown, second row: Miss Chapin, Doris Melenovsky, Sandra Baker, Bonnie Kraus, Jimmy Williams, Doris Larson, Shirley Kemme, Pat Heinen, Yvonne Wolleat.



Time to stop and chat, or make a date for Friday night!  
If the between-class traffic gets too thick, a faculty monitor suggests, "Time to move on."







#### BAND

The band, under the direction of R. Cedric Anderson, beats the time away during the day by playing at pep assemblies, and entertain us at football and basketball games in the evening.

#### ORCHESTRA

Each mid-morning groups of music pupils in the orchestra gather to "foot their own horns." One of the favorite tunes echoing in he corridors is "The Syncopated Clock." Time goes quickly during these periods.



Time on your hands? Rooseveltians are never slow to discover some new way to enjoy themselves and pass away the odd moments. High school days are happy days.



Valuable hours are those spent in activities. Students obtain much satisfaction from representing their school in music. These pupils and Sponsor Robert Hutchinson reserve time-and-a-half for overtime.



#### CHORUS

Twice a week Roosevelt's up and coming vocalists spend an hour trying to make their voices sound like those of choir. They contributed both time and effort to make the operetta a success by helping with costumes and scenery.

#### CHOIR

The 97 members of choir were kept busy on the Strauss operetta, "Die Fledermaus," singing for assembly programs, the Kiwanis club, Elks club, and others. These active groups are under the direction of Robert Hutchinson.

**"Curtain time" finds a state of tense temporary nervousness back-stage. In front of the footlights expectant audiences are waiting to enjoy some good amateur entertainment in RHS auditorium.**



"Die Fledermaus," ("The Bat") an operetta by Johann Strauss, was presented by the R.H.S. musical department November 9, 10, 16, and 17. Each night was a sell-out and people came from far and wide to see this gay and colorful performance.

Robert Hutchinson, senior high vocal instructor, directed the operetta. A chorus of 28 was used on the stage with the entire choir of over 100 appearing for the finale.

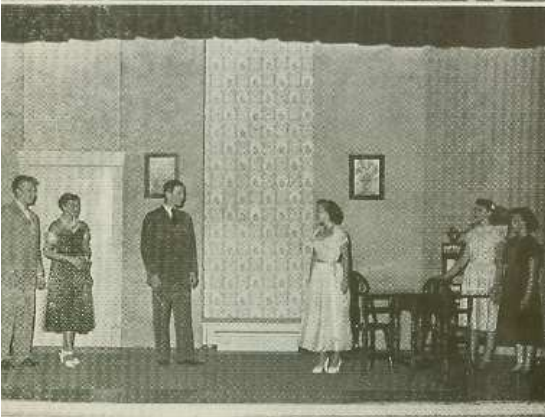
The instrumental department, under the direction of R. Cedric Anderson, provided the orchestra. Ballet dancers were directed by Miss Eva Wainwright, physical education teacher. The leads went to: Carroll Baumgartner, Charlotte Condon, Janet Haurer, Wayne Selzer, Dick Harmon, Stanley Roseberry, Alice Smith, Russell Blood and Bill Ulch.



"And Never Been Kissed," under the direction of Miss Roberta D. Sheets, was staged in the fall of 1951 by the Roosevelt Thespians. The play was a modern three-act comedy about teen-age life.

The stage crew, headed by Russell Merrifield, stage manager, worked hard on props, scenery, and costumes to help make the play a success.

The leads went to Jean Schirm, Jim Williams, Jenice Serbousek, Beve Sipe, Jack Ilten, Nancy Meyn, Doug Houghton, Bill Vosdingh, and Ronnie Cherry. Janet Herrbach was student director.



**"What time is deadline?" is a question which governs the staff of the school paper. No use have these students for that well known thief of time, procrastination.**



#### RECORD STAFF

Self-satisfaction is the only reward for writing on the staff of The Roosevelt Record, student newspaper. Long hours are spent on the bi-weekly publication. Editor Doug Wiley and business manager Charlotte Condon headed the staff during the fall semester, but they turned their duties over to Jane Montgomery and Joan Kunzman for the spring term. The staff began the year with a bright outlook for the future. Early in the fall 14 members attended the annual state journalism conference to discuss new ideas and compare their practices with other schools. This year the conference was held at Iowa State college.

The Roosevelt Record's publication is made possible through student subscriptions and sale of advertising. Last year the staff was honored for the second successive year with the top honor rating by Quill and Scroll, international society for high school journalists. Mrs. Lorene Chehak and Chester Mau are the advisors for editorial and printing.



#### RECORD STAFF

Front row: Charlotte Condon, Bonnie Krauss, Jane Montgomery, Doug Wiley; second row: Janet Herrbach, Sheryl Stephan, Sally McEveney, Charlotte Dostal, Ruth Therp, Patty McEveney; third row: Kenney Helming, Jim McGuire, Carroll Baumgartner, Jack Ilten, Russ Blood, Carol Ann Roberdee, Alice Lyman, Joan Kunzman.

Front row: Thelma Pickerill, Janet Hauser, Elaine Anderson, DeWayne Johanos; second row: Gwen Krippner, Joyce Marsh, Emrie Usher, Norma Sheldon, Maurene Homer, Mary Lou Reed, Barbara Davis, Betty Rosenberger; third row: Carolyn Wells, Chuck Hollan, Virginia Rohrbacher, Frank Edmunds, Janice Stodola, Gale Morey, Mildred Novotny, Doug Redies, Ann Rogers.

# 3:40

The school day for coaches and athletes gets its second wind when the clock says 3:40 p.m. From that time until darkness falls, participants practice for the season's sport.



Left to right are Coaches Sam Cooper, George Thomson, George Hiding, Paul Jones, Roy Marsh, Wayne Van Deest, A. Dwight Anderson, Irvin Ebinger, Clem Carney.

Five returning veterans and a transfer from Clear Lake were aided by experienced juniors and sophomores to fill out the baseball roster.

Franklin held a jinx over R.H.S., beating them in three games played. The fourth game ended with the Riders on top, 8-2.

Roosevelt's bids in tournament play were downed in first or second game defeats.

Front row: Norval Lee, Ron Saylor, Jim Hess, Stan Roseberry, Dave Randolph, Charles Strasburger; back row: manager Bill Brouard, Jim Bailey, Ralph Briles, Gale Morey, Don Thompson, Gary Droz, Coach George Thomson.  
1952 veterans are: Jim Murdock, Ronnie Saylor, Norval Lee, Dave Randolph, Don Thompson, Joe Kinnan, Charles Strasburger, Jim Hess, Gale Morey, Gary Droz, and Ralph Briles.



"Time marches on" toward the goalposts, if Roosevelt fans have their way. Pupils look forward to week-end games and out of town bus trips to fight the foe.



#### VARSITY FOOTBALL

First Row: John Millis, Doug Wiley, LeYerne Noeller, Dewey Bird, Russ Blood, Ronnie Allard, Cliff McClean, Don Thompson, Frank Varner; Second Row: Manager Les Gard, Doug Houghton, Vic Gonzalez, Gary Droz, Thom Wharton, Dave Randolph, Jim Hess, Jim Floyd, Jack Martin, Dave Naibert, and Manager Frank Edmunds.  
Third Row: Coach George Hiding, Dave Shakespeare, Wayne Selzer, Norval Lee, Chuck Strausburger, Dick Fuller, Jim McGuire, Dave Mitchell, Jack Babcock, Stewart Cooper, Karl Kullander, Stan Roseberry, Wayne Riley, and Manager Dean Stewart;  
Fourth Row: George Handlik, Dick Spicer, Dave Selzer, Gale Morey, Jerry Milota, Jack Ilten, Ken Helming, Dick Merrifield, Joe Kinnan, Bob Filling, Jack Uthe, Bob Dale, and Assistant Coach Sam Cooper.  
Twelve lettermen will return for the 1952 season.

#### FOOTBALL

Under the management of a new RHS coach, George Hiding, an inexperienced 1951 Roosevelt football squad was built around only six returning lettermen. The team went the distance without a victory, but morale was high, and most of the scores were close. The standings were: two ties, six losses, and no wins at season's end.

The team showed speed, power, spirit, and determination during the first half of the games, but seemed to falter in the second half, probably due to overwhelming strength from the opponents. The closest game was battled during the Riders' homecoming with Wilson. They fell, 9 to 7, in the closing minutes when a field goal upset a tie game. The heaviest defeat Roosevelt suffered came from the Davenport Blue Devils, 35 to 7.

The squad opened up the season with a road trip to Muscatine where they were edged out, 13-7. Another road trip, this time to Clinton, wound up with a 6-6 tie in the drizzling rain.

The Franklin Thunderbolts played host, but the Roughriders lost again by a one touchdown deficit. Moosehart, Illinois, battled the Tedmen during a thunder storm, 20-13. The team tied McKinley 13-13 the next week. Brilliant play by Randolph, Selzer, and Hess proved the Teds had determination to win.

Mitchell led the scoring with 16 points, and Selzer followed with 12.

The timekeeper is an important man at basketball games. As the seconds pass, the fate of many a cage squad has been in the timekeeper's hands, so to speak.



#### VARSITY BASKETBALL

The 1951-52 basketball squad included, first row: George Hanzlik, Bill Kibbie, Ron Helming; second row: Karl Kullander, Ray Jedlicka, Charles Strasburger, Dave Mitchell, Norval Lee, Ron Saylor, Stewart Cooper; third row: Dewey Bird, Kenneth Helming, Dave Randolph, Jim McGuire, Stan Roseberry, Bob Dale, Gary Drot. The honorary captain was Dave Randolph. The team was coached by Clem Carney.

#### BASKETBALL

The Roosevelt 1951-1952 varsity basketball squad was hard hit at mid-season by the loss of two of the first string players, Wayne Selzer and Stan Roseberry. Outstanding juniors were Dave Mitchell, Norval Lee, and Ray Jedlicka.

The fireball of Coach Clem Carney's squad this year was a little junior southpaw, Dewey Bird, who could always be seen trying to outjump big Dave Mitchell. This little left-hander was the spark plug of the team, who contributed more to the spirit of the squad than any other single player.

The Roosevelt Roughriders were taken out of the running for state by the Wilson Ramblers, in the district tourney.



**"One-two-three —" counts the official, amid cheers and jeers from the crowd. Wrestling, the newest competitive sport at Roosevelt, is already a favorite.**

**WRESTLING**

A tie with Franklin for first place in city and fourth place in conference were gained by the Rider grapplers in '51-'52. The season record stood 8 wins and 2 losses. Roosevelt fell to Franklin by a slim score, 18-17, and to Davenport, M.V.C. defending champs.

Two records were set by Rider matmen. A 15 second fall was set by Jim Hess in city competition, and a 14 second pin was awarded to Dave Shakespeare in a match with Traer.

Hess was the only RHS wrestler to qualify for the state wrestling meet at Mason City on February 29. Jim was decided by Ken Saylor of East Waterloo in his first match. It was the second year of wrestling for Roosevelt. The squad was coached by Wayne Van Deest.

**WRESTLING**

Seated: Dave Buckner, Eardley Bell; First Row: Bill Phelps, Tom Miller, Leonard Hartl, Jim Caviness, Lee Baird, LaVerne Noeller, Ronnie Allard, Jim Mardock, Larry Froberg, Charles Hollan, Don Sivers; Second Row: Ed Wisnously, Leroy Swore, Richard McLaud, Garlan Hoskin, Harold

Kennedy, Vic Gonzalez, Jim Floyd, Tom Niebes, Leonard Peck, Larry Young, Dick Harman, Bill Hoffner; Third Row: Kaye Slocum, Manager Dick Burgess, Dick Polansky, Don Davis, Eldon Hasley, Jim Hess, Coach Wayne VanDeest, Dave Shakespeare, Dave Naibert, Ron Popelka, Nelson Turner, Rawlins Rhodes, Manager Jon Bruns, Jim Bailey.



Early spring and fall days are often a chilly time for the "thin-clads" who do most of their training outside.



#### CROSS COUNTRY

Members of the team pictured from left to right are, standing: Larry Froeberg, Don Davis, Laverne Knock, Robert Knight, Coach Ebinger, James Smythe, Richard Polansky, Dick Harmon, Bruce Trimble, and Bill Holsinger. Kneeling: Eldon Hasley, Ronald Saylor, George Johnson, Ray Jedlicka, and Dave Anderson. Not pictured: Charles Hollan.

#### TRACK SQUAD

First row: Gard, Merrifield, Melsha, Anderson, Bauserman, Smyth, Johnson, Wharton, Jedlicka, Knight, Bird. Second row: Coach Ebinger, Edmunds, Ford, Baird, Anderson, Shakespeare, Kullander, Young, Hollan, Blood, Jenson, Hasley, Coach Cooper. Third row: Floyd, Long, White, Niebes, Hoskin, Smyth, Kent, Harman, Pidima, Redies.



#### 1951 TRACK

The Roosevelt track squad made a good showing last year. The team's two pointgetters were Wayne Selzer and Carroll Bauserman. Selzer was outstanding in pole vault, taking first in district and tying for first in state. Bauserman was outstanding in his participation in the relays and in the one and two mile runs.

The 1951 track squad was composed mostly of juniors, who did well. The "51" track squad was coached by S. A. Cooper assisted by Irvin Ebinger.

#### CROSS COUNTRY

Irvin Ebinger, replacing S. A. Cooper as cross country coach this year, considered the 1951 season a good one. The Rider cross country team tied for first place in the state Class A mile and cross country run. The team took second place honors in the city and came in fourth in the Mississippi Valley Conference.

The Ted relay team was composed of Dave Anderson, Eldon Hasley, and George Johnson. Jim Smyth copped top spot in the conference sophomore half mile run.

**Their time's a-comin'! Sophomore and freshman stars of today will be varsity standbys tomorrow.**



**SOPHOMORE FOOTBALL**

First row: Snyder, Kirby, Kelly, Caviness, Yuva, Miller, Harll, Tolheim; second row: Manager Canfield, Baird, Wilson, Olson, Wessel, Adney, Staszny, O'Bannon, Hoskin, Hamad and Manager Pratt; third row: Kennedy, Perry, Wiggins, Karr, Young, Holub, Krumbholtz, Woodhouse, Pedersen, Aten, Helming, and Coach Clem Carney.  
The Jr. Tedmen finished second in the city race with 2 wins, 2 losses, and one tie.

**SOPHOMORE BASKETBALL**

The sophomore basketball squad included, front row: Jack Mindor, Bill Holsinger, Keith Karr, Ellis Wiggins, Bob Kent, Stanley Aten, Jim Kirby; back row: Manager Virgil McQueen, Dick Perry, Lyle Chittick, Ron Olson, David Wessel, Wilbur O'Bannon, Ken Wilson, Daryl Pederson, and Manager Ronald Umstead.  
The season record was 5 wins, 12 losses. Coach was Dwight Anderson.

**FRESHMAN FOOTBALL**

The frosh football squad wound up the 1951 season with one win, no defeats, and three tied games.

The Junior Tedmen trounced Tipton by a score of 20 to 0 in a night game. This was the only victory for the freshmen. The most exciting game was against the Wilson Ramblers on Roosevelt's home field. Roosevelt scored twice only to have the scores nullified by offside penalties. Other game scores were a 0-0 tie against McKinley's Golden Bears, and a 6-6 tie against the Franklin Thunderbolts.

Outstanding play was shown by Lyle Chittick, Bob Goldensof, and Tony Davis. The team was coached by George Thomson, and Dwight A. Anderson was assistant coach.

# HOMECOMING



## QUEEN AND ATTENDANTS

Before homecoming, the football team nominated five "gals" for queen, and the student body voted for their favorite blond. The outcome of the election is kept secret until the pep assembly the day before the game. This year the coveted honor was won by tiny Jean Schirm. Her attendants were Beve Sipe, Janice Serbousek, Marilyn Schirm, and Mary Ellen Johnson.

Time for fun! Homecoming with pep skits, game, and dance makes for a gay week-end.

#### HOMECOMING

The spirit of homecoming was heightened with a bonfire and pep assembly before the game.

During the half-time of the exciting and muddy game, the Roosevelt marching band performed exacting and difficult maneuvers. Then members stood at attention while Queen Jean Schirm and her attendants rode by the cheering crowd in a shining light green convertible. The I2B president, Ronald Popelka, presented the queen with an arm bouquet of red roses, and to each of the attendants a bright yellow chrysanthemum.

Roosevelt had Wilson on their haunches, but failed to upset them as the Wilson Ramblers ruined the Rider homecoming with a last quarter field goal, 9-7.

Ray Long's band furnished music for the annual dance in the Roosevelt gym, which ended "Homecoming" festivities for another year.



Suddenly time flies! Class officers find the hour has come for them to plan traditional activities. Senior officers get busy on class wills, prophecies, and history.



#### TENTH GRADE OFFICERS

Here are some of the future leaders of Roosevelt High School: David Canfield, 10B president; Carolyn Wells, 10A vice-president; Marilyn Worchester, 10A secretary-treasurer; Ellis Wiggins, 10B vice-president; and Garlan Hoskin, 10B secretary-treasurer. Class officers are elected in the fall and serve for one year, with the exception of 12A.



#### ELEVENTH GRADE OFFICERS

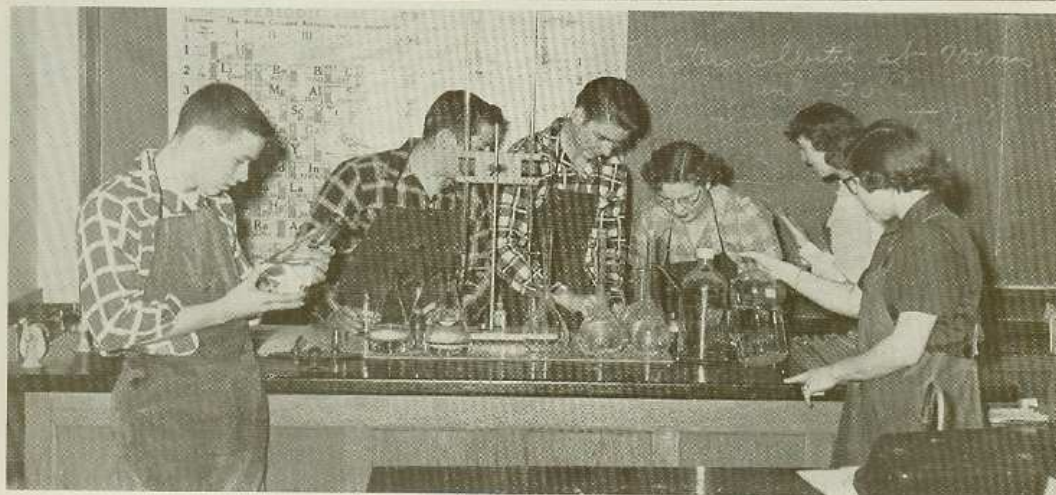
Doug Houghton, 11B president; Joyce Marsh, 11B vice-president; Norma Sheldon, 11B secretary-treasurer; Evelyn Patsel, 11A vice-president; Yvonne Wolleat, 11A secretary-treasurer; and Jim McGuire, 11A president. With the responsibility of being an eleventh grade class officer comes the duty of making the arrangements for the annual junior-senior prom.

#### TWELFTH GRADE OFFICERS

First row: Ronnie Popelka, 12B president, and Tom Wharton, 12A president. Second row: Marilyn Jones, 12B vice-president; Doris Melenovsky, 12B secretary-treasurer; Judy Chandler, 12A secretary-treasurer; and Marilyn Allen, 12A vice-president. The senior officers had to be on their toes throughout the year because of many activities such as class day, baccalaureate service, commencement, and the dinner dance.



Being a 12B means that it is almost time to be a 12A. The last year is the most memorable, of course, and all too short. Seniors are always in a mad rush.



12B  
 Front row, left to right: Briles, Wagner, Dunlop, Bissell, Hamer, Prasil, Chase, Anderson, Wolleat, Stewart, Cabalka.  
 Back row: Blood, Murdock, Lehner, Naibert, Sedlacek, Burgess, McGuire, Redmon, Reid, Helming, McClean, Ehrenberger, Simon.

$H_2SO_4$ ,  $NH_3$ ,  $NaCl$ ,  $BR_2$ . All these mystifying formulas have a definite meaning for chemistry students. It may be vinegar or nitro-glycerin to blow up the school. Never-to-be-forgotten are the peculiar odors that floated around R.H.S. halls, which could be credited to the chemistry lab. Gathered around the chemistry table, trying to decide what to do next are a few of the 12B chemistry students. Left to right are Clifford McClean, Gary Simon, Steven Sedlacek, Charlotte Dostal, Jean Vodder, and Diane Wagner.

Juniors try to persuade parents to become more lenient about "getting-in" time. An hour more by the clock indicates these pupils are "growing up."



Front row, left to right: McRoberts, Petrick, Polk, Grieder, Buresh, Fuller, Whipple, Davis.  
Back row: Myers, Johnson, Cahalan, Usher, Misner, Blessing, Harris, Woodford.

Front row, left to right: Sindelar, Homer, Mason, Barker, Newkirk, Anderson, Balsinger, Rohrbacher, Steyne.  
Back row: Henecke, Cooper, Houghton, Jedlicka, Shakespeare, Lee, Saylor, Kullander, Dale, Thompson.



Juniors look forward to prom time, at which they entertain the seniors. "Have you a date?" is a timely question, as girls feverishly shop for a formal.



11A  
 Front row, left to right: Schmidt, Popinger, Wagner, Shank, Myers, Harris, Herman, Krippner, McNeill.  
 Back row: Beneke, Jasa, Gard, Seichert, Jensen, Briggs, Phelps, Sheldon, Leonard.

Front row, left to right: Brown, Coyle, Hively, Sullivan, Kelsey, Brodie, Neuhaus, Vondracek, Lewis.  
 Back row: Kelly, Barta, Stewart, Gnagy, Olson, Svec, Kugel, Ronnenberg.

Mid-year juniors also find it's time to decide whether to go to summer school and move up a class, or to slow down now that there is no January graduation.



11B  
 Front row, left to right: Thomas, Miller, Worcester, McDonald, Boom.  
 Back row: Briles, Holsinger, Aten, Olson, O'Bannon, Karr, Helming, Miller.

Front row, left to right: Deason, Hicks, Klein, Turner, Wiltsey.  
 Back row: Yuva, Varner, Gard, Stastny, Krumboltz, Woodhouse, Simon.

**Even 10A's think the time has come to assert themselves. They are now eligible for many activities, including the all-school dances.**

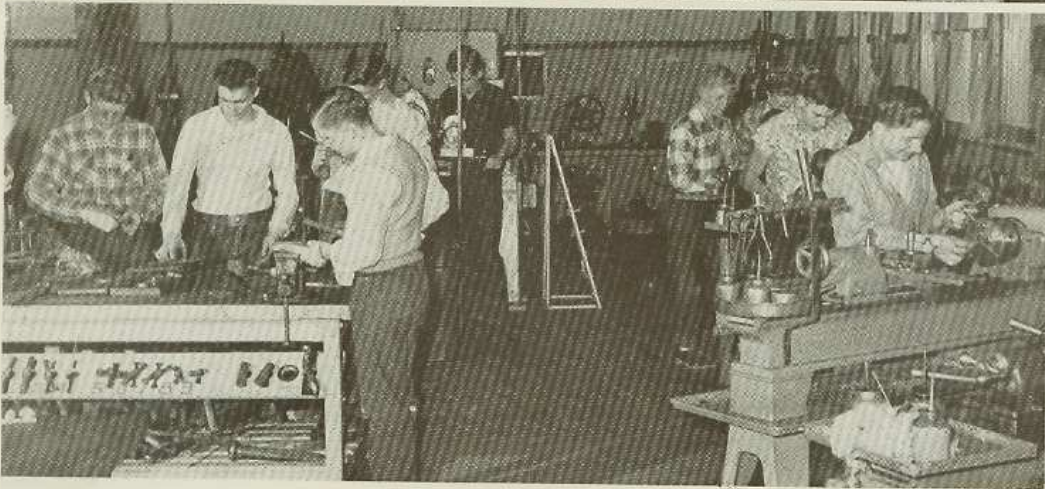


**10A**

Front row, left to right: Emry, Henderson, Hanson, Hanzlik, Rosdail, Denison, Jilet, Bootjer, Clarke, Yanda, Stracke, Bishop, Lipp, Ostrander, Ahlgren.  
 Middle row: Roberdee, Detlefsen, Lambert, Koehn, Sorenson, Guthrie, Herrbach, Miller, Owen, Fry, Radloff.  
 Back row: Huber, Hoskin, Canfield, Hartl, Mengler, Hensch, White, Niebes, McQueen.

Front row, left to right: Korb, Bausch, Byers, Petrak, Hays, Lewis, Clauson, Hirsch, Wilcox, Jirutek.  
 Middle row: Christensen, Allen, Kinkead, Pratt, Rawson.  
 Back row: Millis, Hamad, Wiggins, Peterson, Howland, Kent, Umsted, Ahlgren, Case, Lloyd.

10B's eagerly await this semester, when they are officially a part of senior high school. "Can you imagine US ever looking like THEY do," they comment about junior high pupils.



10A  
Front row, left to right: Minier, Rhodes, McKee, Webster, Byers, Burgess, Hamer, Burcl, Craig.  
Middle row: Davis, Welsh, Adney, Wessel, Edgington, Mingler, Craig.  
Back row: Lagerquist, Pidima, Rugger, Kelly, Mueller, Caviness, Stewart.

Buzzing saws, drills, and the smell of sawdust are a reminder to everyone in R.H.S. that the boys taking shop courses are constantly busy. This year, among other things, members of woodwork and metalwork classes contributed their time and effort to make trinkets for the all-school Christmas tree. Ingenuity and ambition determine the projects chosen by pupils in advanced courses, for they choose their own. Upon completion some projects look almost professional.

# JANUARY



# SENIORS

**After time of mid-year graduation, those of us who are left find it pretty lonely without the former 12A's, though we never let thm know how important they really were!**

MARILYN ALLEN — "Lynne", 12A vice pres., participated in K.K.R. 10, 11, pres. 12; Y-Teen 10, 11, 12; Manus Classica 10; choir 11, 12. She was also in F.T.A. 12; T.A.B. 11; and a member of the operetta stage chorus.

CARROLL BAUMGARTNER — "Bummy" had the male lead in three operettas, was a member of choir 9, 10, 11, 12; band 9, 10, 11; orchestra 9, 10 11; Music club 10, 11; Dance mand 10, 11; and the cornet trio 9, 10, 11. He also found time for Hi-Y 9, 10, 11, 12; Record staff 11, 12; F.T.A. 10 treas. and vice pres. 11, 12; Quill and Scroll 12; T.A.B. 11, 12. Carroll was pres. of Student Council 12, class pres. in 11, and vice pres. in 10, and Boys State in '50.

KEN BELL — "Louie" belonged to Manus Classica 9; Thespians 10, 11; choir 11; and was a member of the tumbling team in 11.

EDWIN BYERS — "Ed" sang in the choir 9, 10; also was in Art club 11; and a member of T.A.B. 9, 10.

JUDY CHANDLER — "Tex" held an office in the majority of clubs she belonged to. She was sec'y-treas. of the 12A class; a member of F.T.A. 10, 11, pres. 12B, vice pres. 12A; Spanish club treas. and pres. 12; T.A.B. 10; Manus Classica 10; Record staff 12; and choir 10, 11, 12.

ARLEY ASK — "Slim" was a Hi-Y member 9. He was vice pres. of Camera club 12, and belonged to T.A.B. 10, 11.

JOHN BAUMHOEFENER — "Looy" gave his time to Rifle club 10, 11, 12.

BILL BROWN — Bill's interest was centered around Rifle club 10, 11, 12.

CAROL CANADAY — Carol took part in Manus Classica as corresponding sec'y 10, 11; Thespians 11, 12; Y-Teen 10, 11, 12; T.A.B. 10; Student Council 11; and choir 10, 11, 12; participated in the operetta 11, 12. She was an active member of F.T.A. 11, pres. 12.

CHARLOTTE CONDON — "Charlie", with her soprano voice, held the feminine lead in two operettas in 11, 12. She was a cheerleader in 10, 11, 12; took part in K.K.R. 10, sec'y. 11, 12; Record staff 11, business manager 12; choir 10, 11, 12; T.A.B. 10; and was elected into Aristotelian 12.

MARY LOU COVER — "Mickey" was "Miss Roosevelt" for the Eastern Iowa band festival in '50. She divided her time among band 9, 10, 11, 12; orchestra 10, 11; choir 10, 11, 12; ensemble 10, 11, 12; and dance band 10, 11, 12; and also participated in K.K.R. 10, 11, treas. 12; Music club 10, 11, 12; recording sec'y 12; Y-Teen 11, 12; Annual staff 11, 12. Mary Lou was elected into Aristotelian 12.



FLORENCE ELAM — participated in F.T.A. 11, 12; T.A.B. 11, 12; prayer band 10. "Flo" was a member of choir 9, 10, 11, 12; and belonged to the operetta stage chorus in 11 and 12.

BARBARA FREEMAN'S — main interest was in Art club 10, 11.



JANET HERRBACH — "Jan" was an Aristotelian 11, 12; took part in Manus Classica as recording sec'y. 10, 11; Thespians 11, 12; Record staff 12; choir 10, 11, 12; Chemistry club 11; Student Council 9; and was in the operetta stage chorus 11, 12. Janet was also sec'y-treas. of the class in 9 grade.

RICHARD HICKMAN — was active in sports. He went out for wrestling L 11; football 10, 11, 12; and basketball 10. Richard was vice pres. of Hi-Y 11; and also belonged to "R" club 12.



JACK ILTEN — went to Boys State 12. He was in Manus Classica 10; Thespian pres. 11, 12; Hi-Y 11, 12; "R" club sec'y. 12; T.A.B. 11, 12; and received three letters in football 10, 11, 12.

DEWAYNE JOHANOS — "Joe" played in the band and orchestra 10, 11; was in Manus Classica 9, srg't at arms 10; Music club 10; Record staff 11, 12; Student Council 11; and T.A.B. 10. Dewayne also went out for track and football in 10, 11.



MARY ELLEN JOHNSON — an attendant to the homecoming queen, 12, was active in K.K.R. 10, treas. 11, 12; Thespians 11; Y-Teen 10, sec'y. 11, 12; choir 10, 11, 12; Student Council 12. Mary Ellen also participated in F.T.A. 12.

CHERIE KEHNE — "Little One" spent her time in T.A.B. 12; Spanish club 11, 12; and belonged to the Keen Teen club.



JACK LECHTY — was a member of Camera club 11, 12; and took part in football in 9.

TED LEE — spent his time working outside of school.



EL DAVE MAIKON — "El Wood" belonged to Hi-Y 11, 12.



PHYLLIS MANN — "Phyl" found time for Manus Classica 9, 10; choir 10, 11, 12; Student Council 12; Chemistry club 11; F.T.A. 12; Annual staff 11; and T.A.B. 10, 11. She participated in the stage chorus for the operettas.



JIM MILLER — was in Aristotelian 12; Manus Classica 10; Thespians 10, 11, 12; Hi-Y 11, 12; F.T.A. 12; and T.A.B. 11. Jim was electrician for the 11, 12 operettas and also president of the class in 10.



NORMA MITCHELL — "Mitch" divided her time among K.K.R. 10, vice pres. 11, 12; Y-Teen 10, 11, vice pres. 12; choir 10, 11, 12; F.T.A. 12; T.A.B. 10. Norma belonged to the stage chorus for the operettas in 11, 12.



VERNON POWLISHTA — participated in choir 10, 11, 12; Hi-Y 10, sec'y 11, 12.



STANLEY ROSEBERRY — "Stan" was a sportsman out for football L 10, 11, 12; baseball L 9, 10, L 11, L 12; basketball L 9, 10, L 11, L 12; and track 9, 10. He was active in choir 9, 10, 12; band 9, 10, 11; orchestra 9, 10, 11; ensemble 9, 10, 11; dance band 10, 11; Music club 10, pres. 11. Stan was in Manus Classica 9, 10; Thespians 11, 12; Hi-Y 10, vice pres. 11, 12; "R" club 11, 12; Student Council 10, 11, 12; F.T.A. 12; T.A.B. 10, 11; Operetta 12; play 11, Boys State in 11.



JOVON SCHULTZ — took part in Hi-Y 11, 12; Airplane club 9; and T.A.B. 12.



WAYNE SELZER — "Bump" specialized in sports, went all out for basketball L 9, L 10, 11, L 12; football L 9, 12; and track L 9, 12. He still found time for Hi-Y 11, 12; band 9, 10; choir 9, 12; "R" club 11, vice pres. 12; Sigma Sigme 11, and pres. 12. Bump had a lead in the operettas 10, 11, 12.



HELEN SHIPE — was a member of Aristotelian 11, 12; Manus Classica 10, 11; Thespians 11, sec'y-treas. 12; Student Council 10, 11; Chemistry club 11; and choir 10, 11, 12. Helen was also in the operetta stage chorus 11, 12.





CAROLYN SMRCEK — "Twin" belonged to the tumbling team 9, 10, 11, 12; K.K.R. 10, 11; and G.A.A. 11, pres. 12.



MARILYN SMRCEK — "Twin" was sec'y. of G.A.A. 12 and also a member in 10, 11. She participated in K.K.R. 10, 11; and was active on the tumbling team 9, 10, 11, 12.

EDNA SWICK — "Eddie" was interested in Art club 12 and also K.K.R. 12.



PATRICIA TAFT — "Pat" was a talented clarinetist. She was active in band 9, 10, 11, 12; orchestra 9, 10, 11, 12; ensemble 9, 10, 11, 12; Music club 10, corresponding sec'y. 11, 12; choir 9; G.A.A. 10, 11, 12; F.T.A. 11, 12; T.A.B. 10, secy-treas. 11, 12 and Spanish club 11, sec'y 12. Pat was also elected into Aristotelian 12.

ANN TURNER — "Annie" was a member of the tumbling team 11, 12; F.T.A. 12; and choir 9, 12.



WILLIAM ULCH — "Bill" participated in baseball 10, 11, 12; basketball 10, 11; and football 10, 11. He was one of the leads in two operettas. Bill belonged to "R" club 11; sigma Sigma treas. 12; T.A.B. vice pres. 10; and F.T.A. historian 12.

JOAN VOSMEK — "Jo" divided her time among K.K.R. 10, 11, 12; Y-Teen 10, 11, 12; choir 10, 11, 12; F.T.A. 12; and T.A.B. 10. She was also in the operetta stage chorus 11, 12.



YVONNE WASKOW — an R.H.S. office clerk 12, sang in the choir 9, 10. She participated in K.K.R. 11, 12; Y-Teen 10, 11; Sigma Sigma 11, 12; and T.A.B. 10, 11, 12.

TOM WHARTON — president of his class in 12A and 9 grade; went to Boys State in 12. Tom was active in track 9, 10, 11, 12; basketball 10, and football L 9, 10, 11, 12. He also found time for Manus Classica vice pres. 10, 11; Thespians 10, 11, 12; Hi-Y 11, 12; choir 9, 0, 11, 12; "R" club 12; Aristotelian president 12; Student Council vice pres. 10, 11, 12; F.T.A. treas. 12; Annual staff 12; and T.A.B. 11, 12. Tom also participated in the operettas.



EDWARD WHITE — "Milt," a very talented trombonist, was music-minded. Captain in 12, he was a very active member of band 11, 12; orchestra 11, 12; ensemble 11, 12; and Music club treas. 11, pres. 12. He also belonged to dance band 11, 12.



DORIS WICKE — "Dory" belonged to K.K.R. 11; Thespians 12; Y-Teen 10, 11; and G.A.A. 11, 12.

DENNIS WORTH — "Mary" went out for football 10, 11, and wrestling 11. Dennis was in Rifle club 10, 11, 12.

EMMAJANE ZAMASTIL — "Emi", a member of Aristotelian 12, took part in K.K.R. 11; Manus Classica 9, sec'y 10; Y-Teen 10, 11; G.A.A. sec'y 11, 12; Sigma in 10th grade. "Emi" was secretary of the class Sigma 12, and Ushers club 10.



COURAGE FOR TOMORROW

Death is a mysterious thing;  
 Whatever can it be?  
 No one can ever hear it;  
 No one can ever see.  
 It's around us in all walks of life,  
 In families deep in sorrow.  
 Let us pray to God in Heaven above,  
 To send courage for tomorrow.

By Doris Melenovsky

In memory of Nancy Thurston, member of the class of January 1952 who died suddenly on November 20, 1951, this poem was written by a schoolmate.

JUNE



SENIORS

The hands of the clock seem to move faster as June graduation approaches, and the end of the school year. Time marches on.



JOAN ABERNATHY — "Jo" was in K.K.R. in 11, 12; Biology club pres. 10; T.A.B. 11; Y-Teen 9, 10.

DAVID ANDERSON — "Andy" was class pres. in 11. He belonged to "R" club in 12; Rifle club 10 sec'y 11, pres. 12; Aristotelian 12; Student council 12; track L 11; cross country L 10, 11.



LORENE APPLGATE — Lorene's interest started in music where she participated in the band 9, 10; orchestra 5. Later she joined K.K.R. 10, 11, 12.

NORMAN LEE ASSING — "Norm" came to Roosevelt from Roosevelt high at Esterville where he was active in sports. Here he belonged to T.A.B. 12.



SANDRA BAKER — "Sandy" was a member of Biology club 10; T.A.B. 12; Y-Teen 10; K.K.R. 11, 12; sang in the choir 10, 11, 12.

ERNEST BAYER — Ernest belonged to F.T.A. 12; T.A.B. 12.



JEAN BENEST — "Benny" was active in sports. She belonged to G.A.A. 10, 11, 12; Girls tumbling team 10; Band 9, 10, 11; Music club 10, 11; Drum ensemble 10, 11; Y-Teen 10, 11, 12; Art club 10; T.A.B. 12; Camera club 12.

JO ANN BRADLEY — "Jo" was in choir 10, 11, 12; K.K.R. vice pres. 11, 12; Y-Teen 10, 11; F.T.A. 12; T.A.B. 11, 12.



JO ANN BRIDGE — JoAnn took part in the orchestra 10; T.A.B. 11, 12; K.K.R. 11, 12.

KATHRYN BUSH — "Katie" found time for Y-Teen 11, 12; choir 10, 11, 12; G.A.A. 11, 12; Sigma Sigma 11, 12; Chemistry club 11; T.A.B. 10.

VERNON CERVENY — Vernon participated in Sigma Sigma 12; Chemistry club 11; F.T.A. 11, 12.



RONNIE CHERRY — Ronnie played a good tennis game 9, L 10, 11, 12. He was a member of "R" club 11, 12; T.A.B. 12.

DONNA CROSSETT — "Donnie" worked hard as bus. mgr. on the '52 annual. She also had time for K.K.R. 12; Manus Classica 9, 10; Y-Teen 9, 10, 11; library staff 12; Chemistry club vice pres. 11; F.T.A. 12; Officials club 9.



JOHN DIETZ — "Amos" found time for track 9; football L 9, L 10, L 11; basketball L 9, though he was kept busy farming at home. He also belonged to Hi-Y, 10; "R" club, 10.

KEITH DREXLER — "Drex's" interest in high school was the Rifle club 11, vice pres. 12.



GARY DROZ — "Nick" went all out for sports with football, L 9, L 10, L 12; basketball L 9, L 11; baseball L 11. Gary started class leadership early when he became vice pres. 9. He also belonged to "R" club 12; Art club, 9.

ROBERT L. FILLING — "Duke's" main interest was football L 9, capt. L 10, L 11, L 12, all-city 12. He also participated in track 9, 10, 11; "R" club 11; Thespians 11.



RICHARD FULLER — "Pete" played football 9, 10, 11, 12; basketball 10, 11, 12. He was also in Hi-Y 11, 12; choir 11, 12; Sigma Sigma 11, 12; T.A.B. 11; Chemistry club, 11.

VICTOR GONZALEZ — "Vic" joined Roosevelt in grade 11 when he came from Pittsburgh, Penn. He played football, L 12.



JOANN GRUHN — "Dug" found time to be a member of K.K.R. 11, 12; Y-Teen in 11, 12.

RICHARD HARMAN—Dick took part in band and orchestra 9; choir 10, 11, 12; Sigma Sigma 12; Art club 11, 12; art editor on annual staff 12; track 10, 11, 12; wrestling 11, 12; and cross country 10, 11.



JANET HAUSER—"Jan" played her part in the music department where she had a lead in two operettas 11, 12; was songstress for the dance band and sang in choir 10, 11, 12. She belonged to Thespians 9, 10, 11, program director 12; Jr. Y-Teen 9; Record staff 11, feature editor 12; Y-Teen 10, 11, 12; Aristotelian 12; Sigma Sigma vice pres. 12; F.T.A. 12; T.A.B. 10.

PATRICIA HEINEN—"Lynne" participated in K.K.R. 11, 12; Y-Teen 10; choir 11, 12; Art club 10, 12; Annual staff 12; T.A.B.



DANIEL HELMICH—"Dan's" interest was centered in music. He was in the band 9, 10, 11, 12; orchestra 9, 10, 11, 12; choir 10, 11, 12; Music club 10, 11, sec'y 12; ensemble 10, 11, 12; prayer band 9; operetta chorus in 10, 11, 12. He also belonged to Manus Classica 9, 10; Student Council 11, 12; T.A.B. 11, 12; track 9.

JOYCE HENNINGS—"Shortie's" first club was Biology in 10, then choir 10, 11, 12; K.K.R. 11, 12.



MARILYN HENNINGS—"Jeanie" went along with her sister by belonging to Biology club 10; choir 10, 11, 12; K.K.R. 11, 12.

JIM HESS—"Hessy" spent most of his time in the sports field. He played football capt. L 12; baseball 9, L 11; wrestling L 11, capt. L 12. He also belonged to "R" club 11, pres. 12; Hi-Y 9; T.A.B. 11, 12.



CHARLES HOLLAN—Chuck worked on the Record staff 11, 12; and belonged to choir 10, 11, 12; "R" club 11, 12; Camera club 11; track 9, 10, L 11, L 12; football 9; wrestling 12; cross country 10, 11.

JACK HUDSON—"Red" came to Roosevelt in 11th grade. He was a member of Manus Classica 11, sec'y-treas. 12; band 11, 12; orchestra 11, 12; ensemble 11, 12; Music club sec'y-treas. 11, pres. 12; dance band 11, 12.



JOAN IRWIN—"Jo" was a member of F.T.A. pres. 12; K.K.R. 11, 12; Junior Y-Teen 9; Y-Teen 10, 11, 12; Biology club 10; T.A.B. 11, 12.

**GEORGE JOHNSON** — George was a member of Hi-Y 10, 11, 12; choir 11, 12; "R" club 11, treas. 12, F.T.A. treas 12; Biology club 10; T.A.B. 10, 11. He also spent time in track L 11; basketball 9; cross country L 10, L 11.



**MARILYN JONES** — Marilyn showed her leadership in Aristotelian 12; Student Council 11, vice pres. 12; annual staff; class vice pres. 12. She also was in Y-Teen 10, 11, 12; choir 10, 12; G.A.A. 10, 11, 12; Junior Y-Teen 9; F.T.A. 12; Officials club 9; Ushers club 11, 12; tumbling team 10, 11, 12.

**SHIRLEY KEMME** — During her high school career Shirley belonged to Junior Y-Teen 9; Y-Teen 10, 11; K.K.R. 11, 12; choir 10, 11, 12; G.A.A. 10, 11, 12; F.T.A. 12; Sigma Sigma 12; T.A.B. 12.



**JOE KINNAN** — "Chuck" went out for football 9, L 10, 11, L 12; baseball L 10, L 11, L 12; basketball 9, 10. He was in Hi-Y 10, 11, 12; choir 10, 11, 12; "R" club 11, 12; Sigma Sigma 11, 12; F.T.A. 11, 12; worked on the '52 annual.

**LAVERNE KNOCK** — "Knocker" was active in Sigma Sigma, pres. 12; Airplane club 9, 10, 11; Rifle club 12; tumbling team 11; and was out for track. He was the class vice pres. 11, and was in student council 11.



**BONNIE KRAUS** — Bonnie kept herself occupied in Thespians 11, 12; Junior Y-Teen sec'y 9; Y-Teen 10, 11, sec'y 12; choir 10, 11, 12; Sigma Sigma 11, 12; F.T.A. 12; T.A.B. 12; Record staff 11, 12.

**RAYMOND KRUG** — Raymond played basketball 9; and was in Biology club during his high school career.



**DON KULA** — "Crash" worked hard on the stage crew while he was in Thespians 11, 12.

**JOAN KUNZMAN** — Joan was the class sec'y-treas. 11; and she also belonged to Manus Classica 10; Thespians 11, 12; Record staff 12; Y-Teen 10, 11, 12; choir 11, 12; G.A.A. 11, 12; Junior Y-Teen 9; F.T.A. 12.



**DORIS LARSON** — Doris was the band majorette 10, 11, 12. She also belonged to K.K.R. 11, 12; Y-Teen 10, 11, 12; choir 10, 11, 12; G.A.A. 10, 11, 12; Sigma Sigma 12; T.A.B. 12; tumbling team 10, 11.

ROSE ANN LEWIS—Even though "Red" had 11 miles to come to R.H.S. and also had a part time job she found time for Biology club 10; and T.A.B. 11, 12.



ALICE LYMAN—"Al" was active in student council 10, 11, 12; Sigma Sigma sec'y 12; choir 10, 11, 12. She also belonged to Thespians 11, 12; Record staff 11, 12; Chemistry club 11; Art club 10, Jr. Y-Teen 9, F.T.A. 12, Biology club 10, Ushers club 11, 12.



JACK MARTIN—"Marty" played football L 9, L 10, 11, L 12; baseball 10; and track 9. He belonged to Hi-Y 9, 10, 11, 12; "R" club 12; Camera club 9.



SALLY MCEVENEY—Sally was elected into Aristotelian 11, 12, and Quill and Scroll 12. She also belonged to Manus Classica 10, Record staff 11, 12; Chemistry club 11, Spanish club 11, 12.



DORIS MELENOVSKY—"Milly" was sec'y-treas. of twelfth grade, and belonged to K.K.R. 11, pres. 12; choir 10, 11, 12; F.T.A. 11, 12; annual staff 12; T.A.B. 11, 12; Ushers club 9, 10, 11, 12; Biology club 10.



JOANNE LUNDQUIST — "Jo" was senior editor of the annual, and in Thespians, asst. bus. mgr. 11, bus. mgr. 12. Her other activities were Y-Teen 10, 11, 12; choir 10, 11, 12; operetta chorus 10, 11, 12; G.A.A. 10, 11, 12; Student Council 11, Jr. Y-Teen 9; F.T.A. 12; Officials club 9; Record staff 11; freshman cheerleader; Ushers club 9, 10, 11, sec'y-treas. 12.

MARYBESS MARKLEY—"Bunny's" activities included Junior Y-Teen 9; Y-Teen 10; K.K.R. 11, 12; band 9; choir 11, 12; Sigma Sigma 12; Student Council 12; F.T.A. 12; cheerleader 9; Biology club 10; T.A.B. 10.

PATTY MCEVENEY — Patty's activities were Manus Classica 10; Spanish club 11, sec'y-treas. 12; Record staff 11, 12; T.A.B. 11; Chemistry club 11; Quill and Scroll 12; Aristotelian 11, 12.

SHIRLEY MEFFERD — "Squirrel" took an active part in Biology club, pres. 10, 11, pres. 12; K.K.R. 10; G.A.A. 10, 11, 12; Chemistry club 11; F.T.A. 10, 11, T.A.B. 11, sec'y 12.

LEO MEYERS — "Jeronimo" went out for sports when he first began high school, track 9, 10; basketball 9. He later belonged to Hi-Y 10, 11; Sigma Sigma 12; Camera club srg't-at-arms 12.



MARIANN MILOTA — "Tinky" belonged to T.A.B. 11 in school, and out of school was a whiz on roller skates.



IRMAJEAN MINDER—"Irmajohn" came to Roosevelt from East Dubuque in 11th grade. She was chosen for Aristotelion 11A; belonged to F.T.A. in 12B.

JANE MONTGOMERY — Jane was a member of Manus Classica 10; Thespians 11, 12; Y-Teen 10, 11, 12; Music club 10; Aristotelian pres 12; Sigma Sigma sec'y 12; Student Council 10; Chemistry sec'y-treas. 11; F.T.A. 12; Quill and Scroll 12; Ushers club 9, 10, 11, vice pres. 12; Record staff 11, editor 12; orchestra 9, 10, 11; choir 12. Jane was a freshman cheerleader and went to Hawkeye Girls State in '51.



MURLAND MORAN — Murland took an interest in the boys tumbling team 11, 12; also was Spanish club treas. 12.

ELIZABETH MRSTIK — "Betty" was interested in sports, but was kept busy helping at home.



MILDRED NOVOTNY — Mildred spent her club time at K.K.R. 11, 12; and her extra time on annual staff 11, 12.

DALE NYE — Dale's interest centered on music. He belonged to choir 9, 10, 11, 12; orchestra 9, 10; band 10; operetta choir 10, 11, 12; track 10.



DORIS OSWALD — "Ozzie" was on the '52 annual staff and she also was a member of K.K.R. 12; choir 10, 11, 12; F.T.A. 12.

CARLYLE PECK — Carlyle joined the Roughriders in eleventh grade. He came from Virginia.



BOB PECK — Bob is interested in shop subjects and wrestling and plans on traveling after high school.

MARDELLE PERRY — Mardelle, Y-Teen 12; Chemistry club 11; Student Council 10; Aristotelian was active in Thespians 11, 12; Y-Teen 12; Chemistry club 11; Student Council 10; Aristotelian 11, 12; Officials club 9. She was sec'y-treas. of tenth grade.



THELMA PICKERILL—"Pick" participated in many activities: Thespians 11, 12; Record staff 12; Y-Teen 10, 11, 12; band 9, 10; orchestra 9, 10; choir 10, 11, 12; Sigma Sigma 12; Student Council 11; Art club 10; Officials club 9.

ELMER PIRKL — Elmer's interests centered on shop work in school, and out of school he liked farming and dancing.



RONNIE POPELKA—"Slinky" was an important member of the wrestling team L 11, L 12; went out for football L 9, L 10; track L 9, L 10. He also belonged to Thespians 10, 11, pres. 12; orchestra 10, 11; "R" club 11, 12; Sigma Sigma 12; Student Council 10, 11, vice pres. 12; F.T.A. 12. He was pres. of senior class and was elected to Hawkeye Boys State '51.

LOIS PRATT — Lois contributed her share to Roosevelt by working on the library staff 9, 10, 11, 12. She also belonged to K.K.R. 12; Art club 10, 11, vice pres. 12; F.T.A. treas. 11, sec'y 12; Officials club 9; annual staff 12.



ROSE PRIMROSE — Rose belonged to T.A.B. 11 even though she had many responsibilities at home.

MARLENE RAMMELSBERG — Marlene was mainly interested in sports and was G.A.A. treas. 11, sec'y 12. She also belonged to Y-Teen 10, 11, pres. 12; Student Council 12; Junior Y-Teen 9; F.T.A. 12; Officials club; annual staff 12.



SHIRLEY RANDALL — "Randy" was a cheerleader 9, 10, 11, 12. She was a member of K.K.R. 12; Thespians 11; Student Council 12; annual staff 12; Ushers club 10, 11, 12, Biology club sec'y-treas. 10.

DAVID RANDOLPH — "Louie" was one of Roosevelt's few all-round athletes, football L 11, L 12; baseball L 10, L 11; basketball L 10, L 11, L 12. He showed leadership also: Boys State, class treas. 9, Hi-Y 11, pres. 12; "R" club 11, pres. 12, F.T.A. vice pres. 12; Sigma Sigma treas. 12; Student council 12 T.A.B. 10, 11, 12.



DOUGLAS REDIES—"Doug" was sports reporter on Record staff 12, and track manager 12. He also belonged to "R" club 12.

MARY LOU REED—was active in Ushers club 10, 11, sec'y-treas. 11; Student council 12; Record staff 11, 12; K.K.R. 12; Y-Teen 11.



WAYNE RILEY—Wayne played football L 9, L 10, L 12. He also found time to be a member of four clubs: "R" club 12; Sigma Sigma 12; T.A.B. 11; Airplane club 10.

CAROL ANN ROBERDEE — was the ad manager of Record staff 11, 12 in addition to being a member of K.K.R. 11; Junior Y-Teen 9; Y-Teen 11, 12; Student Council 12; Camera club 12; T. A.B. 11.



JUANITA ROBERTSON—"Nita" was a member of K.K.R. 11, 12; Y-Teen 11, 12; F.T.A. 12 and Ushers club 10, 11, 12. "Punk" was also on the tumbling team.

ANN ROGERS—"Annie" was in G.A.A. 11, 12 and on the tumbling team. She also included Record staff 11, 12; Y-Teen 11, 12; Library club 10; F.T.A. 12; Ushers club 12, in her high school activities.



VIOLET RONNENBERG — "Vi" was a member of K.K.R. 12; orchestra 9; Biology club 10.

BETTY ROSENBERGER—"Bets'" activities included Record staff 12; Y-Teen 10, 11; choir 11, 12.



SHIRLEY ROSS — Shirley spent her time in Thespians 11, sec'y-treas. 12; K.K.R. 12; Junior Y-Teen 9; F.T.A. 11, 12; T.A.B. 11, 12.

PAT ROWELL—known as "Rae," belonged to K.K.R. 12; choir 11, 12; Student Council 10; Chemistry club 11; Junior Y-Teen 9; Officials club 9; T.A.B. 12; Biology club 10, sec'y-treas. 11, 12.



JEAN SCHIRM — held the coveted title of homecoming queen and was also a cheerleader 9, 10, 11, 12. She was a member of K.K.R. 11, 12; Thespians 11, 12; Record staff 11, Junior Y-Teen 9; Y-Teen 10, 11, 12; choir 10, 11, 12; annual staff 12; Ushers club 10, 11, 12; class vice pres. 10; asst. play director 12.

DAVE SELZER — played football 9, 10, 11; basketball 10, 11. Dave went to Boys State '51, and was a member of T.A.B. 10, 11, 12; Sigma Sigma 12; F.T.A. 12; Thespians bus. mgr. 12.



JANICE SERBOUSEK — "Serbie" had a large variety of clubs. She belonged to Manus Classica, vice pres. 10; Thespians 11, 12; Aristotelian 12; Sigma Sigma 12; Student Council 10, 11, 12; Chemistry club librarian reporter 11; F.T.A. sec'y 12; T.A.B. 12; asst. bus. mgr. of '52 annual. Jan was also homecoming queen attendant 12; a student advisor to Mr. Parker 11; sec'y-treas. of eleventh grade.



CLARENCE SHAFER — Clarence belonged to choir 10, 11; Biology club 10.



BEVERLY SIPE — "Beve" was busy working at the Telephone Co. but found extra time to belong to K.K.R. 11; Thespians 12; Y-Teen 11, 12; G.A.A. 11, 12; F.T.A. 12; annual staff 12; T.A.B. 11; Ushers club 11, 12. She also was homecoming queen attendant 12.



BILL SIVERS — "Willie" played football 11, and tennis 11. He also was a member of Hi-Y 10, srg't-at-arms 11, vice pres. 12; Rifle club 10, 11, sec'y-treas. 12; F.T.A. 12.



ALICE SMITH — "Smitty" played a lead in the operetta 12; operetta chorus 10, 11. She was a member of K.K.R. 11; Junior Y-Teen 9; choir 10, 11, 12; Aristotelian 12; Student Council 10, 11, 12; F.T.A. 11, 12; Officials club 9; annual staff 12; Spanish club 11, pres. 12.



MILDRED SMITH — "Smitty's" main interest was sports. She was a member of G.A.A. 10, 11, 12; Officials club 9; played softball for Wilson & Co. 11.



DARLEEN STECKEL — "Stinky" was interested in sports, G.A.A. 10, 11, 12; tumbling team 10, 11; Officials club 9. Her other activities included Y-Teen 10, 11, 12; Biology club 10; K.K.R. 11.



SHERYL STEPHAN — Sheryl was a member of G.A.A. 10, vice pres. 11, pres. 12; Officials club pres. 9; and tumbling team 10, 11, 12. She also belonged to Manus Classica 10; Thespians 11, bus. mgr. 12; Record staff 11, 12; Y-Teen 10, 11, 12; choir 10; Student Council 12; Junior Y-Teen treas. 9; T.A.B. 12.



DONALD STERNAD — "Donnie" was busy with his part-time farm job, but still found spare time for shop subjects and dancing.



**CHARLES STRASBURGER** — "Chas" played football L 10, L 11, L 12; baseball L 10, L 11; basketball L 10, L 12; track L 9. He belonged to Thespians 11, 12; "R" club 10, 11, 12; Chemistry club 11.



**PATRICIA TATE**—Pat found time to belong to Spanish club 10, 11; Junior Y-Teen 9, although her job kept her very busy.

**RUTH THARP** — "Babe" contributed her part by working on the Record staff 11, 12; and belonging to Y-Teen 10; Biology club 10; Camera club 12; T.A.B. 12.



**RICHARD VALLIERE** — Dick was outstanding in tennis, L 10, L 11; belonged to "R" club 10, 11, 12.

**JANET VILLERS** — Janet, besides playing and teaching the accordion out of school, found time to be in Y-Teen 11, 12; orchestra 9, 10, 11, 12; Music club 9; G.A.A. 10, 11, 12; Junior Y-Teen 9; F.T.A. 12; Annual staff typist 12, cheerleading 10, 11, 12 in school.



**SHIRLEY WAGNER** — "Squirt" was a member of T.A.B. 11. When not in school she worked and roller-skated.

**HELEN WALINE** — "Skip" was a good violin player. She was in the orchestra 9, 10, pres. 11, 12; ensemble 9, 10, 11, 12. She belonged to Music club 10, 11, pres. 12; also took part in the all city orchestra 9, 10, 11, 12; city and state contests 9, 10, 11, 12.



**BARBARA WEST** — "Bobbie" was head of costumes for plays 12; belonged to Manus Classica 10; Thespians 11, 12; Art club 11, pres. 12; Chemistry club 11.

**GLORIA WIEGNER** — "Puts" was a member of Biology club 10; Officials club 9; K.K.R. 11, 12; Y-Teen 10; Junior Y-Teen 9; Sigma Sigma 12; F.T.A. 11, 12; choir 10, 11, 12; T.A.B. 11. She also was a freshman cheerleader.



**CHARLES WIGGINS** — "Chuck" played in the band 10, 11, 12; all city band 12; was a member of Rifle club 12; went out for wrestling 12; track 11, 12.

DOUGLAS WILEY — "Gunner" was a good leader. He was pres. of ninth grade; Student Council 9, 10, 11, pres. 12; editor of Record 12; sports ed. 11; and "R" club sec'y 12. Doug also was in Hi-Y 9; Aristotelian 12; Quill and Scroll 12; football L 10, 11, L 12; basketball L 9, L 10, 11, 12.



JIM WILLIAMS — Jimmy's main interest was art. He belonged to Art club 9, 10, pres 11, pres. 12; Thespians 12; choir 10, 11, 12; Chemistry club 11; T.A.B. 12. He also helped with many art decorations for school activities.



NANCY ZANKA — Nancy belonged to Junior Y-Teen in 9; from then on she has been busy taking an art course from Minneapolis.



JOYCE BROWN — Joyce was in G.A.A. 10, 11, 12; choir 10, 11, 12; Biology club 10; T.A.B. 10, 11, 12.

We secretly wish that we could turn back the clock and live every moment over again. Perhaps we can, through the pages of this book.



So we have gone 'round the clock. The stop watch marks time to quit. The staff says "Time to rest." We hope you feel it hasn't been wasted time!



**ANNUAL STAFF**

Front row: Donna Crosselt, Tom Wharton, Mardelle Perry, Dick Harmon, Pat Heinen; second row: Doris Oswald, Doris Melenovsky, Janet Villers, Marlene Rammelsberg, Alice Smith, Lois Pratt.  
 Front row: Shirley Randall, Jean Schirm, Janice Serbousek, Joanne Lundquist, Marilyn Jones; second row: Joe Kinnan, Steven Sedlacek, Douglas Houghton, Beve Sipe.  
 Front row: Frank Varner, Douglas Redies, Arnold Schappert, Russell Blood, Jim Murdock, Paul Millis, Kenneth Helming, Don Lehner, Jim McGuire, Jack Martin, Norman Jellison.



