

1954

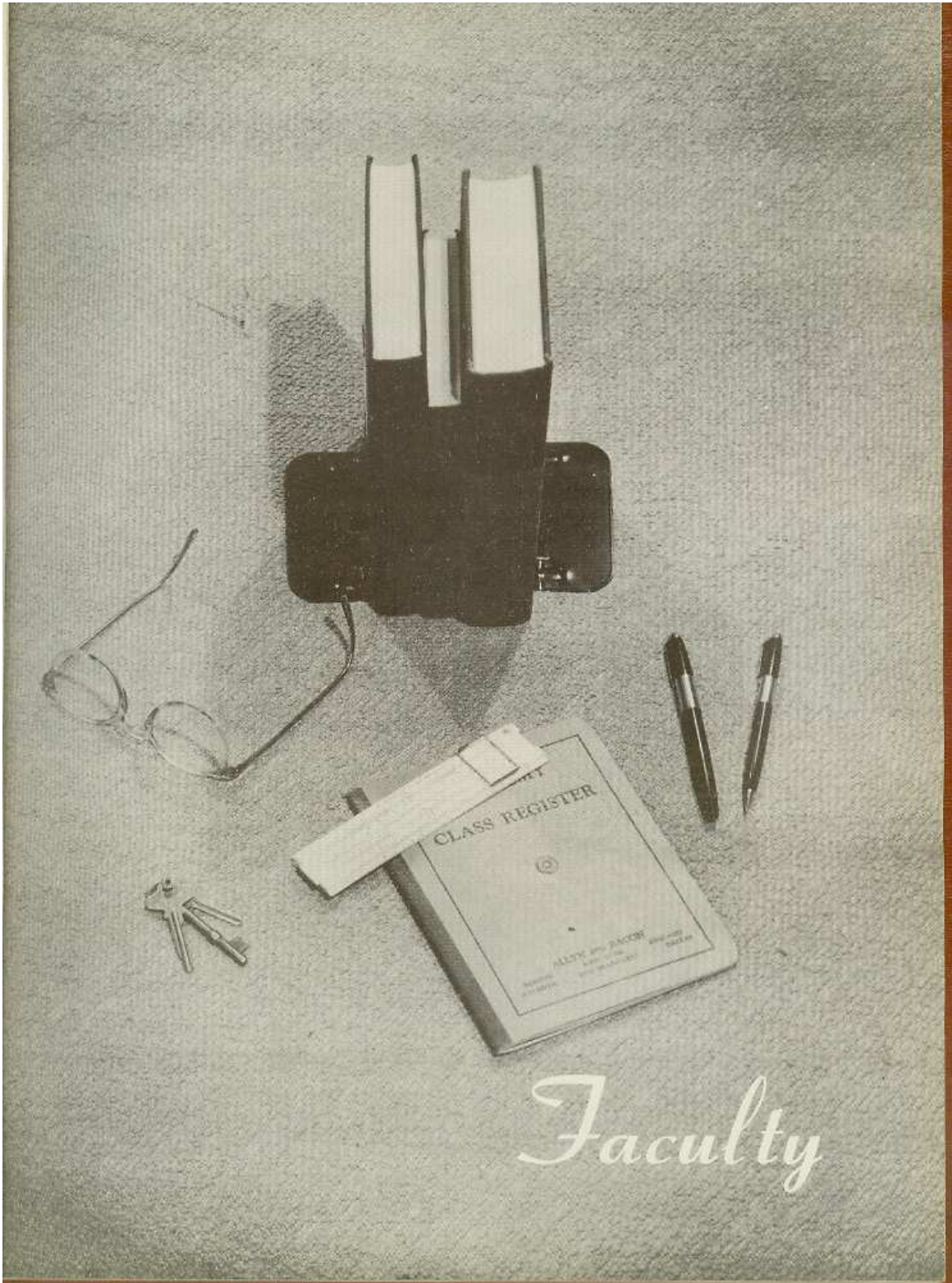
ROUNDUP



ROOSEVELT ROUNDUP



Published by the
Annual Staff of the Class of '54
ROOSEVELT HIGH SCHOOL
Cedar Rapids, Iowa



Faculty



MATHEMATICS & SCIENCE

Row 1: Miss Braden, Mrs. Shinn, Mr. Jones, Miss Rickey, Miss Serbousek
 Row 2: Miss Christensen, Mr. Stolar, Mr. McLeod, Mr. Lampe, Mr. Pattee, Mr. Anderson

ART & MUSIC



Row 1: Mrs. Cloud, Miss Trangs
 rud, Miss Harrington
 Row 2: Miss Webster, Mr. Anderson, Mr. Findley, Miss Houts. (not pictured: Mr. Hutchinson)

ENGLISH & LANGUAGE



Row 1: Miss Sheets, Miss Meier, Miss Walker, Mrs. Mirich, Miss Prior, Miss Chambers, Miss Terrill
 Row 2: Miss McFarlane, Mr. Jahncke, Miss Neal, Miss Dingman, Miss Simon, Miss Van Orsdal, Mrs. Chenak

PHYSICAL EDUCATION



Miss Hansen, Mrs. Brackett
 Mr. Cooper, Mr. Hidinge

SOCIAL SCIENCE & COMMERCIAL

Row 1: Miss Trumpp, Miss Schloeman, Miss Williams, Miss Grissel, Mrs. Torstenson
 Row 2: Mr. Daniels, Mr. Marsh, Mr. Miller, Mr. Van Deest, Mr. Carney, Mr. Sherman

HOME ECONOMICS & INDUSTRIAL ARTS



Row 1: Mr. Thomson, Mr. Eermissee, Miss Moffit
 Row 2: Miss Duncan, Mr. Mau, Mr. Ebinger, Mr. Mahany (not pictured: Miss Johnson)





ADMINISTRATION

Principal.....Fred J. Kluss
Administrative Assistant.....Harry K. Burmeister
Girls' Counselor.....Addie M. Zika
Boys' Counselor.....Harold E. Myron
Librarian.....Nelle M. Martin





LIBRARY STAFF

First row: Shirley Myers, Susan Lentz, Olga Jiroutek, Kathleen Kennedy, Sharon Danburg.
Second row: Marilyn Ostrander, Vicky Warner, June Richtarik, Mary Tokheim, Jean Turner, Miss Martin, Librarian.
Third row: Lois Byers, Phyllis Linkenback, Beth McDonald, Juanita Hite, Carol Jenkins, Janet Hagerman.

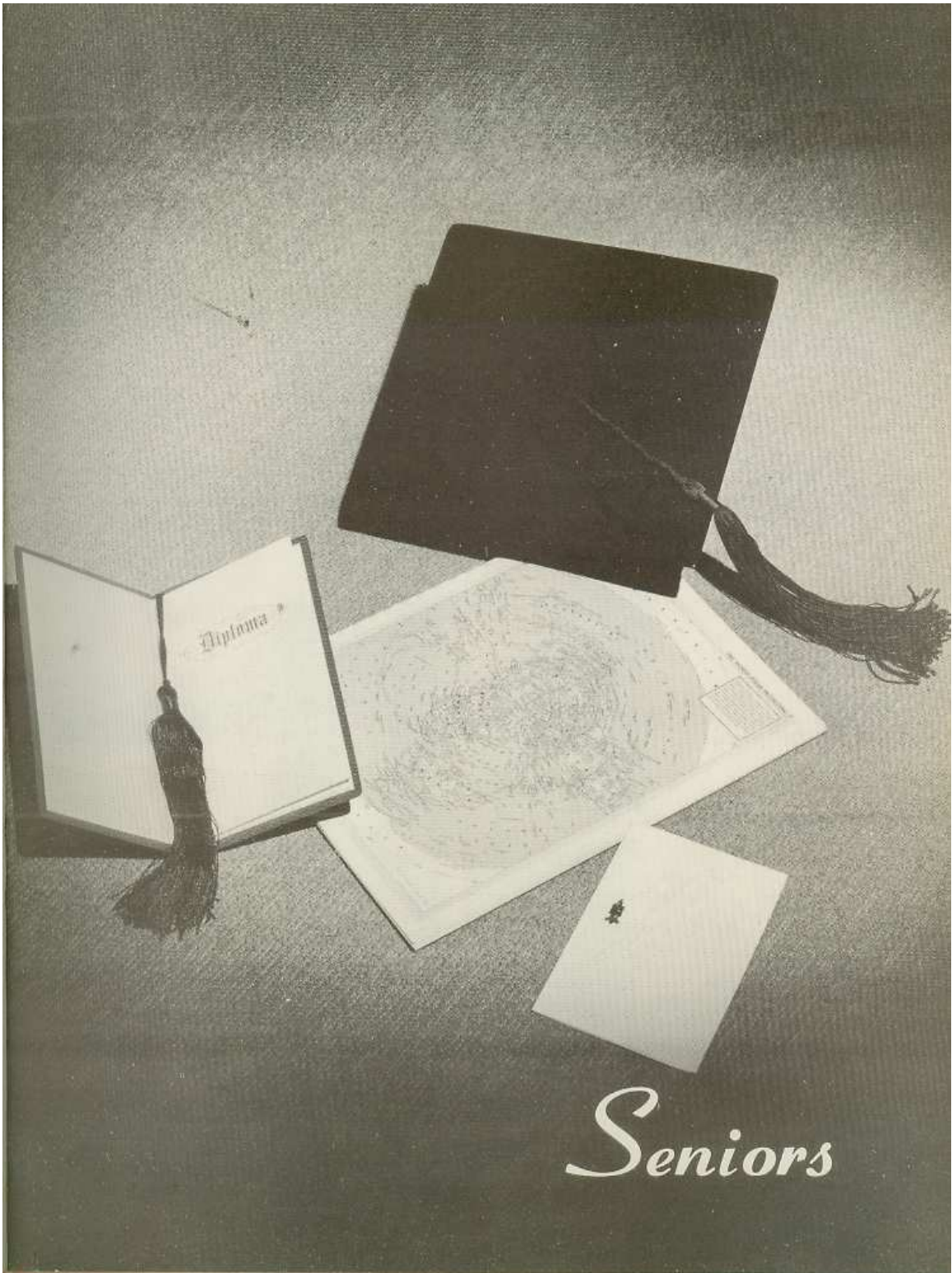
THE OFFICE STAFF

Mrs. Daniels

Miss Koehn

Miss Pickerill





Seniors



SENIOR CLASS

President Howard Tokheim
 Vice President Ron Hamad
 Secretary-Treasurer Janet Bausch



STANLEY ATEN
 Football 9R 12R; Basketball 9-11; Track 9-11; Art Club 11; Student Council 11.



LOUISE AHLGREN "Lou"
 GAA 10-11-Vice Pres. 12; KKR 11; Aristotelian 11-12; Officials Club 9; FTA 12; Jr Y Teen 9Pres.; Choir 10-11; Operetta 10-11; Homecoming Attendant.



JAMES R. BAILEY "Jim"
 Baseball 9-10-11-12R; Wrestling 11R-12; Cross Country 11-12; Aristotelian 12; Lettermen's Club 10-11; National Thespians 11; Local Thespians 9-10-11; Dramatics 9-10-11; Annual Staff 12.



ONNALEE ALLEN "Ollie"
 Y Teen 9-10; Student Council 9; Choir 11-12; Operetta 11-12.



LEE BAIRD
 Football 9-10-11-12R; Track 9-11R-12R; Wrestling 9-10-11-12; Lettermen's Club 10-11-12; Class Officers 9 Vice Pres.

JANET E. BAUSCH

KKR 11-12; Aristotelian 12; Music Club 10-11-12; Orchestra 9-10-11-12; Jr Y Teen 9; Student Council 10; Choir 9-10-11-12; Accompanist; Operetta 9-10-11-12; Class Officer 12 Sec-Treas.



JACK BROGAN "Brogy"

RICHARD BELL

Band 9-10-11-12; Orchestra 9-10-11-12; French Horn Quartet, All City Band



MARILYN BROWN "Lynn"

Biology Club 10; KKR 11; FTA 11-12; Y Teen 10-11-12; Jr Y Teen 9; Student Council 10-11; Cheerleader 9-10-11; Choir 10-11-12; Operetta 9-10-11-12.

DIANE BISHOP "Bish"

Aristotelian 12; Quill & Scroll 12; La Espanita 11-12; Music Club 10-11-12; Band 9-10-11-12; Orchestra 9-10-11-12; Ushers Club 10-11-12; Record Staff 11-12; Student Council 11; All City Band and Orchestra 10-11-12; French Horn Quartet 9-10-11-12; Brass Quintet 11-12; Brass Sextet 12; Woodwind Quintet 11-12; Solo 9-10-11-12



DAISY BURGESS "Pee Wee"

KKr 11-12; Officials Club 9; Y Teen 10-11-12; Jr Y Teen 9; Student Council 10-11; Choir 11-12; Operetta 11-12; Homecoming Queen Attendant.

YVONNE BOOM "Bonnie"

Pep Club 12; SS 10-11; National Thespians 11-12; Local Thespians 10; Dramatics 10-11-12; Y Teen 10-11-12; Jr Y Teen 9.



LOIS BYERS

Band 9-10-11-12; Orchestra 9-10-11-12; Majorette 9-10; Drum Majorette 11-12; Library Staff 12.

BETTY LOU BRADLEY "Be"

Choru 9-10-12



MARY JO BYERS "Jo"

Biology Club 10; KKR 12; Art Club 10-12; Student Council 12.

RALPH BRILES

Baseball 9-10-11-12R; Art Club 10.



GWENDOLYN CALDWELL "Gwen"

Art Club 10-12; Music Club 10-11-12; Band 9-10-11-12; Y Teen 12; Jr Y Teen 9.

DAVE CANFIELD "Chief"
 Football 9-10-11-12R; Basketball
 9-10-11-R; Track 9-10-11-12; Lettermen's
 Club 12; Rifle Club 10-11-12 Sec.;
 Choir 9-10-11-12; Operetta 9-10-11 Lead
 12 Lead; Boys State 1953; Class Officer
 10 Pres.



ROSE CHRISTENSEN
 KKR 11; Y Teen 10; Choir 11.

DIANE CASE "Di"
 FTA 11-12; Local Thespians 11-12;
 Band 9; Y Teen 10-11-12; Jr Y Teen 9;
 Library Staff 11.



BEVERLY CLARKE "Bev"
 FTA 12 Sec.; Local Thespians 10-11
 Dramatics 10-11-12; Music Club 12 Sec.
 Orchestra 10-11-12 Vice Pres.; Y Teen
 10-11; Jr Y Teen 9; Cheerleader 9-10
 Homecoming Queen Attendant.

CHARLES CAUDILL "Chuck"
 Wrestling 10-11; Track 11; Cross
 Country 10-11-12; Music Club 11; Band
 9-10-11; Orchestra 10-11.



NANCY CLAUSON "Nanc"
 KKR 11; Officials Club 9; Y Teen
 10-11-12; Jr Y Teen 9; Choir 11-12
 Operetta 11-12.

JIM CAVINESS
 Football 9-10-11-12R; Baseball 9-10
 11-12R; Wrestling 10-11-12R; Rifle
 Club 12; Biology Club 10; FTA 12;
 National Thespians 11-12; Local Thes-
 pians 10-11-12; Dramatics 10-11-12;
 Band 9; Record Staff 12; Student Coun-
 cil 9-10-11; Operetta 12.



VIRGINIA CRAIG "Ginny"
 Toddville 9; GAA 10-11-12; Pep Cl.
 12; Art Club 10-12; Student Council
 Choir 10-11-12; Operetta 10-11-12
 Annual Staff, Asst. Editor.

JUDITH CHADIMA "Judy"
 La Espanita 12; SS 12; FTA 12; Local
 Thespians 12; Dramatics 12; Student
 Council 12.



DAVE CREW "Bulldog"
 Football 9-10-11-12R; Wrestl.
 10-12; Track 10 Mgr. R; Golf 10R;
 Lettermen's Club 10-11-12; Rec.
 Staff 12.

STEVEN CHANDLER "Pudd"
 Rifle Club 11-12 Pres.; La Espanita
 11 Sec.; Record Staff 11-12.



DARLENE DARLING "Di"
 Floydad, Texas, 9-10; Coffeyville
 Kansas, 10-11; FTA 12; Choir 12.

DON DAVIS "Bud"
 Wrestling 9-10-R-11-12; Cross Country 10-11-12; Golf 11; Lettermen's Club 10-11-12; Choir 9-10; Operetta 9-10.



GARY ENGLAND "Ringo"
 Football 12; Baseball 12; Rifle Club 11-12; Operetta 12; Student Council 12.

DARLENE DEASON "Dee"
 SS 10-11-12; Jr Y Teen 9.



JIM FLOYD
 Football 9-10-11-12 Capt., R; Basketball 9 R; Baseball 9-10-11-12-R; Wrestling 11; Track 10 R; Lettermen's Club 10-11-12; SS 11- Rifle Club 12; Annual Staff 12; Choir 11-12.

JOYCE DENNISON "Denny"
 KKR 11; SS 11-12; FTA 12; Y Teen 10-11; Annual Staff 12.



BEVERLY FRY "Squeakie"
 Biology Club 10; KKR 11-12; SS 11; FTA 12; Library Staff 11; Annual Staff 12.

MARGARET DETLEFSEN "Marg"
 Manus Classica 10; KKR 11-12; Vice Pres.; SS 11-12; Ushers Club 12; Record Staff 11-12; Annual Staff 12.



SHIRLEY FULLER
 Music Club 10-11; Band 9-10-11; Orchestra 9-10-11; Saxophone Quartet 9-11; Piano Solo 10; Saxophone Solo 9; Record Staff 12.

DON EDGINGTON
 Rifle Club 9; National Thespians 12; Local Thespians 10-11; Dramatics 10-11 12; Art Club 10; Record Staff 12; Choir 9-10.



IRMA FYE "If"
 Y Teen 10; Jr Y Teen 9; Choir 11-12; Operetta 11-12.

SHERYL EMRY
 Choir 11; Operetta 11.



BARBARA GJERE

CLIFFORD GOLDSBERRY "Cliff"
Art Club 11-12.



EMILY HANZLIK "Em"
Aristotelian 11-12; Biology Club 10; Officials Club 9; National Thespians 11-12; Local Thespians 11-12; Dramatics 11; Ushers Club 10-11-12; Jr Y Teen 9; Choir 10-11-12; Operetta 11-12; Annual Staff, Asst Editor.

JOYCE GRIEDER
Biology Club 10; KKR 11-12; Jr. Y Teen 9; Choir 11-12.



LEONARD HARTL "Elmer"
Football 9-10; Baseball 9-10 Mgr. R; Wrestling 10-11-12-R; Track 11-12-R; Cross Country 11-12 Capt., R; Lettermen's Club 9-10-11-12; Rifle Club 12; SS 11-12; FTA 11-12; Annual Staff 12; Student Council 12; Boys State 1953.

RAE JEANNE GUTHRIE
KKR 11-12 Treas.; Y Teen 10; Jr Y Teen 9; Record Staff 12; "Miss Cedar Rapids Teenage Cake Queen 1953"



JOANNE HAYS "Jo"
Aristotelian 11-12; Manus Classics 10 Pres.; SS 11-12 Sec.; Ushers Club 12; Jr Y Teen 9; Library Staff 12; Student Council 10-12; Operetta 10-12.

RONALD HAMAD "Ron"
Football 9-10-11-12-R; Basketball 9-10 12; Baseball 9 R; Track 9-10-12-R; Lettermen's Club 12; Rifle Club 12; Biology Club 10; SS 11-12 Vice Pres.; FTA 12; Orchestra 9; Annual Staff 12; Student Council 11-12; Choir 10-11-12; Operetta 10-11-12; Class Officer 12 Vice Pres.



RONALD HELMING "Ronnie"
Football 9R-10-11-12R; Track 11; Golf 10R-12; Quill and Scroll 12; Lettermen's Club 10-11-12 Treas.; Record Staff 11-12.

LAURA HAMER "Mickey"
Record Staff 12; Annual Staff 12; Student Council 11; Choir 10-11; Operetta 11.



JEAN HENDERSON
Ushers Club 12; Y Teen 10-11-12; Jr Y Teen 9; Student Council 11; Choir 11-12; Operetta 10-12; Art Club 11-12 Pres.

MARY ANN HANSON "Hans"
Biology Club 10 Treas.; SS 11-12; Ushers Club 11-12; Y Teen 10-12; Jr Y Teen 9; Library Staff 11; Record Staff 12; Annual Staff; Student Council 12; Chorus 11.



DONNA HENECKE
KKR 11; Officials Club 9; Y Teen 11-12; Jr Y Teen 9; Annual Staff; Cheerleader 9.

BYRON HENSCH

Football 10 Mgr.; Basketball 9; Track 9-10; Biology Club 10; SS 11-12.



WALTER HUBER JR. "Junior"
Aristotelian 12; Quill & Scroll 12; SS 12; Local Thespians 11; Dramatics 11; Record Staff 11-12.

E. KATHLEEN HERRBACH "Kay"

Aristotelian 12; Quill & Scroll 12; GAA 10-11-12; La Espanita 11-12; Biology Club 10; Officials Club 9; National Thespians 11-12; Local Thespians 10; Dramatics 10; Ushers Club 10-11-12; Y Teen 10-11-12; Jr Y Teen 9; Record Staff 11-12; Student Council 11; Cheerleader 9; Choir 10-11-12; Operetta 11-12; Jr. Tribunes 9.



NORMAN HUMBLE
Washington, Iowa, 9-10; University High, Iowa City 11; Art Club 12.

DUVA HINSHAW "Duv"

Aristotelian 12; Manus Classica 10-11; Choir 10-11; Operetta 11.



LELAND IRELAND "Le"
Manus Classica 9-10; Orchestra 9-10 11-12.

WILLARD HOLUB "Willie"

Football 9 R-10 R-11 R-12R; Basketball 9; Baseball 9R-10R-11R-12R; Wrestling 11-12R; Lettermen's Club 11-12; Rifle Club 11-12; Biology Club 10; SS 11; FTA 12; Local Thespians 11; Dramatics 11; Annual Staff 12; Student Council 11 12 Vice Pres.; Class Officer 11 Pres.



PATRICIA JILEK "Pat"
Manus Classica 12; SS 11-12; FTA 11-12; Record Staff 11-12.

GARLAN HOSKIN "Hoski"

Football 10; Wrestling 10-11R-12R; Track 9R-10R-11R-12R; Cross Country 11R-12R; Lettermen's Club 11-12; Manus Classica 9-10; SS 11; FTA 11; Choir 9-10-11-12; Operetta 10-11 Lead, 12 Lead; Class Officer 10 Sec.-Treas.; Student Council Pres. 12.



OLGA JIROUTEK
Biology Club 10; Local Thespians 11; National Thespians 12; Record Staff 12; Annual Staff 12.

RAY HOWLAND

Choir 10-11-12; Operetta 11-12.



EMERY JORDAN
Basketball 9-10-11; Dramatics 11; Choir 9-10-11

MIKE KANE "Killer"
Rifle Club 9-10-11-12.



JANICE KENYON "Janie"
KKR 11-12; Y Teen 10-11-12; Jr
Teen 9; Library Staff 9; Annual Staff
12; Choir 10-11-12; Operetta 11.

KEITH KARR
Football 9-10-11-12-R; Basketball
9-10; Wrestling 11-12; Track 9; Tennis
11-12R; Rifle Club 10-11-12; SS 11-12;
Music Club 9-10; Band 9-10-11-12;
Orchestra 10-11-12; All City Orchestra
10-11-12; All City Band 10-11-12.



JOHN KING
Tennis 12; Orchestra 9; Student
Council 10.

EMILIE KAUB
Home Address: Raphaelplein 16
Amsterdam (Zuid) Holland.
Pep Club 12; Local Thespians 12;
Y Teen 12; Student Council 12; Choir
12; Operetta 12.



JIM KIRBY
Football 9-10-12R; Basketball 9-10-
12R; Baseball 9; Tennis 10-11-12
Lettermen's Club 11-12; SS 11-12; F
11-12; Art Club 11; Choir 11-12; O
peretta 11-12.

TOM KELLY
Football 9-10-12-R.



JANICE KLEIN "Jan"
SS 10-11-12; Jr Y Teen 9; Student
Council 10; Class Officer 10 Pres.

JAMES KENNY "Jim"
Basketball 9; Baseball 10; Golf 11
Film Club 9-10-11-Pres.



BLANCHE KLONTZ
SS 11-12; FTA 11-12.

ROBERT KENT "Bob"
Basketball 9-10; Track 9R-10R;
Choir 10-11-12; Operetta 10-11-12.



LOIS JEAN KNIGGE
Adel, Iowa., 9-10-11; Pep Club
FTA 12; Annual Staff 12; Choir
Operetta 12; Student Council 12.

MAXINE KOEHN "Max"
KKR 11-12 Sec.; SS 11; FTA 12;
Annual Staff 12; Student Council 12;
Homecoming Queen Attendant.



SUZAN LENTZ "Sue"
Manus Classica 10-11; Biology Club
10; Library Staff 11-12; Choir 11; Op-
eretta 11.

CHERYL KORB "Cheri"
Pep Club 12; Record Staff 12.



JANET LEWIS "Jan"
GAA 11-12 Treas.; KKR 11-12; Pep
Club 12; Band 9-10-11-12; Jr Y Teen
9; Record Staff 12; National Basketball
Official 11-12.

GARY KRAMER
Wrestling 12.



JOAN LEWIS "Jo"
SS 11-12; Y Teen 11; Choir 10-11-12;
Operetta 11-12.

WILLIAM KRUMBHOLZ "Willie"
Football 9-10-11-12-R; Basketball
10; Wrestling 11; Track 11-12-R; Letter-
men's Club 11-12 Sec.; Rifle Club 10-11
12 Sec.; Annual Staff 12; Choir 10-11-12;
Operetta 10-11-12.



SANDRA LIPP "Sandy"
Y Teen 10-11-12; Jr Y Teen 9.

HOWARD KUCERA
Football 9; Track 10 Mgr.; Tennis 11
12; Aristotelian 12; Biology Club 9-10
Pres.; FTA 12; Local Thespians 9-10;
National Thespians 11-12; Dramatics
10-11-12; Annual Staff, Business Mgr.



NANCY LLOYD "Flip"
Biology Club 9; KKR 11-12; Band
9-10-11; Y Teen 11-12; Jr. Y Teen 9.

JUNE LAMBERT "Junie"
Biology Club 10; KKR 11-12 Pres.;
Music Club 10; Orchestra 9-10-11-12;
Y Teen 10-11-12; Jr Y Teen 9; Operetta
11-12; All City Orchestra 10-11-12;
Student Council 12; Dramatics 12.



JOHN LOCKHART "Johnnie"

JAMES McCORMICK "Jim"



PATRICIA ANN MELSHA "Pat"
KKR 11; Band 9-10-11-12; Orchestra
9-10-11-12; Y Teen 11; Jr Y Teen 9;
Record Staff 12; Majorette 12; Operetta
9-10-11-12; All City Band 9-10-11-12;
All City Orchestra 9-10-11-12; Dance
Band 9-10-11-12.

BETH McDONALD
Aristotelian 12; Quill & Scroll 12;
Pep Club 12; Official Club 9; SS 11-12;
FTA 11-12; National Thespians 11-12;
Local Thespians 11-12; Dramatics 11
12; Band 9-10; Ushers Club 11; Y Teen
10-12; Jr Y Teen 9 Sec.; Library Staff
10-11-12; Student Council 10-11; Cheer-
leader 10-11-12; Record Staff 11-12.



PHYLLIS MICHELS "Phyll"
KKR 11-12; Pep Club 12; Jr Y Teen
9; Choir 11; Operetta 11.

JACQUELINE McNABB "Doll"
KKR 11; Y Teen 10-11; Jr Y Teen 9;
Choir 10-11; Operetta 11.



KATHY MILLER
Aristotelian 12; Quill & Scroll 12
Pep Club 12 Pres.; SS 11; FTA 12
National Thespians 11-12; Local The-
spians 11-12; Dramatics 11-12; Art Club
10; Band 9; Y Teen 10 Treas.; 11-12
Jr Y Teen 9; Library Staff 10-11-12;
Record Staff 12; Student Council 10-12
Operetta 12; Class Officer 11 Vice Pres.

HARRY McNEAL



SANDRA MILLER "Sandi"
La Espanita 11; Biology Club 10; SS
11-12; FTA 11-12; Y Teen 10-11-12;
Y Teen 9.

VIRGIL McQUEEN
Football 11 Mgr. R. 12; Basketball
9 Mgr. R. 10 Mgr. R; Wrestling 11-12;
Lettermen's Club 11, 12; Biology Club
10; SS 12.



THOMAS MILLER "Tom"
Football 10-11-12-R; Wrestling 10-11-
12-R; Lettermen's Club 12; Manu-
Classics 9-10; Student Council 9-10-11-
12; AFS Summer Exchange Student '53

GEORGE MEANEY



PAUL MILLIS
Art Club 12; Record Staff 12.

LEO MILOTA



SHARON OWEN
Officials Club 9; FTA 10-11-12;
National Thespians 12; Local Thespians
11; Dramatics 11-12; Art Club 10-11;
Y Teen 10; Jr Y Teen 9; Student
Council 9-10-11; Annual Staff.

JACK MINDER "Mousie"
Basketball 9-10-R; Track 9-10-11;
Cross Country 11.



DARREL PEDERSEN "Pete"
Football 9-10-11-12-R; Basketball
9-10-11-12; Track 10-11-12-R; Letter-
men's Club 11-12; SS 11-12; FTA 12;
Record Staff 11-12; Choir 10-11-12;
Operetta 11-12.

WILLIAM MUELLER "Bill"
Football 11-12; Basketball 12 Mgr.;
Rifle Club 11; Biology Club 10; SS 11;
Record Staff 11; Annual Staff 12; Choir
9-10-11-12; Operetta 9-10-11-12.



DICK PERRY
Football 9-10-11-12-R; Basketball
9-10-11-12-R; Lettermen's Club 12; FTA
12.

RONALD OLSON "Ole"
Football 9-10-11-12-R; Basketball 9
10-11-12-R; Track 10-11; Lettermen's
Club 12 Vice Pres.; Rifle Club 11-12;
Biology Club 9-10; Operetta 11-12.



DORIS PETRAK "Pete"
KKR 11-12; Art Club 10; Music
Club 12; Band 9-10-11-12; Operetta
12; All City Band 9-10-11-12.

ADA OSBORNE
KKR 12; SS 12; Y Teen 11-12; An-
nual Staff 12; Majorette 11-12.



PHYLLIS PHELPS
La Espanita 11-12; Biology Club 10;
SS 11.

MARILYN OSTRANDER "Osie"
La Espanita 12; KKR 11; Officials
Club 9; SS 11-12; FTA 12; Y Teen 10-11;
Choir 10; Annual Staff 12; Library
Staff 12.



DICK PICKERING "Dink"
Annual Staff.

RUSSELL PIDIMA "Ebert"
Track 9-10-11-R; Band 9.



BILL RILEY
Football 9, R; Basketball 9-11-12
Baseball 9-10-11; Cross Country 11
Rifle Club 11; Local Thespians 10
Dramatics 9-10; Art Club 9; Recor
Staff 10-11-12; Class Officer 9 Vice Pr

JOHN RADLOFF



JANET ROSDAIL
Jr Y Teen 9.

BEVERLY RAWSON
Art Club 10.



MELVIN SCHAPPERT
Wrestling 12; Band 9; Choir 12; O
eretta 12.

BARBARA RHODES "Babs"
Biology Club 9; Y Teen 10; Jr Y
Teen 9; Choir 11.



LUCIE SCHLEUSSINGER
Home address: Frankfort a.M. Ky
Wiesenu 2 Germany
Local Thespians 12; Art Club
Y Teen 12; Student Council 12; O
12; Operetta 12.

ARLIS RICH "Archie"
Manus Classica 9; Biology Club 10;
Pep Club 10; Y Teen 11-12; Jr Y Teen
9; Student Council 10; City F.H.A
Queen-1951; Annual Staff.



ARDIS SHUPITAR "Ardie"
Biology Club 10; KKR 11-12;
Club 12; SS 11-12; FTA 11-12; Am
Staff Asst. Bus. Mgr.

DALE RICH
Football 12,R; Track 12; Lettermen's
Club 12.



ROBERT SIMON
Basketball 10.

CHARLES SMITH



SHIRLEY SORENSON

Aristotelian 11-12; GAA 12 Sec.; KKR 11-12; Y Teen 10-11-12; Jr. Y Teen 9; Library Staff 9; Choir 10-11-12; Operetta 11-12; Annual Staff; F.T.A. 12 12; Annual Staff; FTA 12.



MARLIN SMITH "Smitty"
Band 9-10-11-12; Orchestra 9-10-11-12.



BOB STASTNY

Football 9-10-11-12-R; Track 11.



JAMES SMYTH "Jim"
Football 9; Basketball 9; Track 9-10 R; Cross Country 10-R.



DAVE STEWART "Stew"

Football 9-R; Baseball 9-11-12; Record Staff 12; Choir 9-10.



JACK SNETZLER



JEAN STODOLA

Oak Park Academy, Nevada, Iowa, 9.



DAVE SNYDER
Football 9-10-11-12-R; Baseball 9-10 12-R; Wrestling 12; Track 11; Lettermen's Club 11-12; Rifle Club 12; Biology Club 10; FTA 11-12; Local Thespians 11; Dramatics 10; Music Club 10; Band 9-10-11; Student Council 9-10-11 12 Pres.; Class Officer 9 Sec. Treas.



ROBERTA STRACKE "Bert"

Aristotelian 11-12; Manus Classica 10 Sec.; Pep Club 12; Music Club 10-11 12; Orchestra 9-10-11-12; Operetta 11 12; Annual Staff.



VERNA SNYDER
Biology Club 10; Jr. Y Teen 9.



JUDY THOMAS

Aristotelian 11-12; La Espanita 10-11 Sec.; Pep Club 12; SS 10 Sec.; FTA 11-12; National Thespians 11-12; Local Thespians 10; Dramatics 10-11-12; Student Director; Y Teen 10-11-12; Jr Y Teen 9-10-11-12; Cheerleader 9-10-11 12; Operetta 11-12; Juniores Tribunia 9 Pres.; Annual Staff; Homecoming Queen. Student Council 12.



NANCY THOMPSON "Nan"
KKR 11-12; SS 11-12; Band 9; Jr Y
Teen 9-10; Annual Staff.



FRANKLIN VARNER "Frank"
Football 9 R, 10-11-12

JEAN THORSON
La Espanita 10; National Thespians
12; Local Thespians 11; Art Club 10;
Y Teen 10-11-12; Jr Y Teen 9.



BOB WAHE

HOWARD TOKHEIM "Tote"
Football 9-10-11-12, R; Basketball 9,
Track 10-11, R; Lettermen's Club 12;
SS 11; Student Council 10-11; Class
Officer 12 Pres.



ANN WEBSTER
La Espanita 11; Art Club 12.

BEVERLY TOW "Bev"
KKR 11-12; Record Staff 11-12;
Choir 11.



CAROLYN WELLS
Aristotelian 12; Quill & Scroll 11-12;
KKR 11-12; Officials Club 9; SS 11-12;
National Thespians 11-12; Local The-
spians 11-12; Dramatics 12; Ushers Club
11-12; Y Teen 10-11-12; Jr. Y Teen 9;
Record Staff 11-12 Editor; Student
Council 10; Choir 11-12; Operetta 11-12;
Class officer 11 Vice Pres.

DOROTHY TRAVIS "Dot"
KKR 11; Jr Y Teen 9; Choir 11-12;
Operetta 11-12.



DAVE WESSEL "Wes"
Football 9-10-11-12-R; Basketba
9-10-11-12-R; Baseball 9; Track 10-11-12-R;
Fourth All State Football Team '53;
Lettermen's Club 12; Rifle Club 11-12;
Record Staff 12; Student Council 11-12.

JEAN TURNER
Biology Club 10; SS 11; Library
Staff 10-12.



ELLIS WIGGINS
Football 9-10-11-12-R; Basketball
10-11-12; Track 9-10-11-12; Lettermen's
Club 11-12; Biology Club 10; SS 11;
FTA 12; Student Council 10-11-12;
Choir 10-11-12; Operetta 11-12 Lead
Annual Staff; Class Officer 10 Vice Pres.

ALENE WILCOX "Anny"
KKR 12, Band 9-10-11-12; Ushers
Club 12; Y Teen 10; Jr. Y Teen 9.



JOHN WOODHOUSE "Gordy"
Football 9-10-11-12-R; Art Club 11-
12; Lettermen's Club 12.

CAROLEE WILLIAMS "Mitch"
SS 11-12; FTA 12; Y Teen 11-12; Jr.
Y Teen 10; Annual Staff 12; Class Of-
ficer 11, Sec.-Treas.; Homecoming At-
tendant 12.



MARILYNN WORCESTER
Aristotelian 11-12 Pres.; La Espanita
10-11-Treas.; SS 11-12 Sec.; National
Thespians 12; Local Thespians 11 Treas
Y Teen 10-11; Jr. Y Teen ; Choir 10-
11-12; Operetta 11-12; Class Officer 11,
Sec.-Treas.; Annual Staff Editor.

KENNETH WILSON
Football 9-10-11-12-R; Basketball
9-10-11-12-R; Lettermen's Club 12;
Rifle Club 12.



BEVER LEE YANDA "Bev"
Biology Club 9-10 Vice Pres.; KKR
11; SS 11-12; FTA 12, Band 9-12; Jr.
Y Teen 9; Library Staff 9; Record Staff
11-12; Choir 9-10-11-12; Operetta 12.

YVONNE WILTSEY
KKR 11-12; SS 10-11-12; Y Teen 10-
11-12; Jr Y Teen 9; Annual Staff 12.



JOHN YUVA
Football 9-10-11-12-R; Wrestling 10;
Lettermen's Club 12; Rifle Club 12;
Band 9-10-11-12.

PAUL WITTER
Eldora High School 9; Franklin High
School 10.



ELMA ZACHARY "Toots"
GAA9; Manus Classica 9; Biology
Club 10; KKR 11-12; Ushers Club 12;
Cheerleader 9; Choir 9-10.

DAVID DISHONG "Dave"
Basketball 10; Baseball 10-11; Choir
10-11; Operetta 9-10-11-12.

FRANK HODGDON
Cresco 9.

KENNETH MELSHA "Ken"
Football 9-10; Track 9-10-11.

RONALD RATHJEN
Wrestling 11; Cross Country 12.

MAX ROGERS

MICHAEL TRAVIS "Mike"
FTA 11; National Thespians 11-12
Pres.; Local Thespians 11; Dramatics
11-12; Record Staff 11; Student Council
12; Sgt-at-Arms; Choir 11-12; Operetta
12.



CRADLE CUTIES
 1 Doris Petrak
 2 Gwen Caldwell
 3 Jean Stodola
 4 Joan Lewis
 5 Ann Webster
 6 Ardis Shupitar
 7 Pat Jilek
 8 Jean Turner
 9 Emily Hanzlik
 10 Beverly Fry
 11 Kay Herrbach
 12 Sandra Lipp
 13 Rae Jeanne Guthrie
 14 Sharon Owen
 15 Nancy Thompson
 16 Ellis Wiggins
 17 Marilyn Worcester
 18 Nancy Lloyd
 19 Jean Thorson
 20 Bill Mueller
 21 Judy Thomas





JUNIOR CLASS

President Kenneth Walser
 Vice President June Richtarik
 Secretary-Treasurer Nancy Meyn

First Row: Sandra Harrison, Janice Donnan, Patsy Clark, Norma Barnard, Shirley Armitage, David Buckner, George Bell, Norma Craig, Mary Ann Boss, Ramona Christoffer, Joyce Flaerchinger, Judy Clausen, Sharon Danberg.

Second Row: Sandra Hansen, Darlene Bruns, Kathryn Brackett, Roberta Gaumon, Janet Hagerman, Jane Hauskins, Priscilla Grigg, Barbara Geer, Jocelyn Chapman, Joanne Berger, Sam Hill, Joe Collins.

Third Row: Joyce Beck, Karen Bean, Catherine Colony, Dennis Benters, Jon Bruns, David Dostal, David Dishong, Paul Hansen, Loyal Adams, Jean Couser, Nancy Dilsaver, Beverly Bogart

Fourth Row: John Glackin, Ronald Harang, Bill Hoffner, John Bush, Bob Clausen, Hal Arntzen, Paul Ferrington, Jack Artz, Ed Davis, Lyle Chittick, Delwin Cline, Richard Cross.





First Row: Joyce Karr, Jannette McCormick, Joan Meek, Nancy Meyn, Marge Loyd, Nadine Krug, Janet Nemecek, Carol Michalek, Sandra Kleppien, Lavonne LeMar, Marilyn Maser, Kathleen Kennedy, Sharon Long.

Second Row: Rosalie Mally, Ercyle McQueen, Velma Pride, Carmen Proffitt, Phyllis Mac-hovec, Sandra Nelson, Virginia McCaughey, Rose Marie McDowell, Marilyn Mann, Carol Minion, Marilyn Mueller, Mercedes Lynberg, Joann Johnson, Vera Krug.

Third Row: William Long, Bob McRoberts, David LeVan, Bill Ludwick, George Kot-meier, Norman Jellison, Ralph Plummer, Fred Park, Allen Nelson, Wayne Kolosik, David Kuda, Robert Jaeger, Mohamed Igram, Mike Mally.

Fourth Row: Jerry Pealer, Harold Kennedy, Richard Jedlicka, Russell Prat, Jack Pickerill, Max Mochal, David May, Wayne Jackson, Roger Plamer, Charles Polansky, Leonard Peck, Ray Olson, Daryl Mally.

JUNIOR CLASS

First Row: Donna Rodman, Evelyn Sedive, Betty Rowden, Nancy Welsh, Terry Wahe, Charles Washburn, Kaye Slacum Philip Woodford, Don Siver, Gerayn Wullner, Carol Salat, Joan Slickty, Margaret Renner.

Second Row: Barbara Sammon, June Richtarik, Judy Welsh, Susan Welsh, Russell Schirm, Jack White, Ted Tonkinson, Robert Simon, Gary Robertson, Theodore Smyth, Victoria Dwan Wells, Eleanor Thorson, Sandra Sirowy.

Third Row: Adele Richards, Marlene Vosdingh, Bill Voshell, Jerry Rogers, Dwayne Wood, Charles Waldron, Hugh Sheridan, Danny Wessel, Harold Wischmeyer, Charles Shank, Edwin Wisnousky, Leroy Swore, Kney Walse, Larry Wimms.





SOPHOMORE CLASS

President Jackie Rauscher
 Vice President Dixie Swore
 Secretary-Treasurer Judy Ernst

First Row: Shirley Convey, Cynthia Cabalka, Pat Badger, Carol Bruns, Barbara Canaday, Peggy Adams, Leeta Bradshaw, Susan Dunleavy, Betty Brecht, Nancy Bailey, Della Assing, Allen Casner.

Second Row: Rosalie Bach, Kay Bruzek, Ann Cooper, Lavonne Abernathy, Veola Bainter, Sandra Dieterich, David Darling, Ron Dostal, Don Caviness, Mary Ellen Day, Leon Bausch, Richard Beck, Terry Cairns, Joe Brink.

Third Row: Don Crumbaugh, Darrel Baker, Bruce Clifton, Richard Caraway, Wayne Byers, Bill Ask, Betty Dusil, Dennis Bradley, Harold Clark, Bill Brouard, Paul Collins, Mike Cones, Jack Campbell.





First Row: Judith Fritz, Janice Jones, Marcia Hanson, Carol Greiner, Lorraine Fowler,
 Judy Jellison, Jane Erland, Audrey Fowler, Sherry Gregory, Lucile Elsbury.
 Second Row: Lois Glime, Judy Hays, Ruth Iben, Judy Ernst, Penelope Finnegan, Carol
 Jenkins, Juanita Hite, Jeanne Forrest, Jolene Johnson, Nancy Graham, Kathleen Gitt.
 Third Row: Danny Herb, Bob Hulshizer, Bob Hamad, Don Herb, David Giem, Jerry
 Flaherty, Eddie Elson, Lyle Heldt, Jim Gloschen, John Hunter, Lanny Humbert.

SOPHOMORE CLASS

First Row: Sally Miller, Jeanie Lear, Eunice Kleppe, Shirley Myers, Sandra Luke, Pris-
 cilla Klumpar, Sharon Kime, Sharolyn Messinger, Jean Miller
 Second Row: Charles Klein, Nadine Maurer, Nancy McIntyre, Mary Le Mumm, Frieda
 McCormick, Carol Kohl, Judy Meyer, Phyllis Linkenbach, Joan Money Penny, Jeneane King
 Third Row: Loren Long, Jackie McIntyre, Judy McNeil, Carol Miller, Bob Nelson, Don
 Kennedy, Ronnie Myers, Janice Kugel, Marlene Lentz, Nancy McHugh, Leilani Nesselhauf
 Fourth Row: James Milota, Jerry Kust, George Meyn, Everett Kelsey, Dennis Murphy,
 Bruce Karr, Dean Mossbarger, Allen LeClere, Tom Mehaffy, Joe Neuhaus, John Lawrence,
 Walter Nelson.





First Row: Patty Ping, Barbara Pealer, Olivia Osborne, Lois Sedlacek, Sharon Rawson,
 Jim Olver, Don Sedlacek, Dick Pazdernik, Gilbert Riley, Georgia Streeter.
 Second Row: Judy Owen, Dixie Swore, Elaine Sternad, Carolyn Pederson, Ann Phelps,
 Amelia Stiffin, Phyllis Reitzel, Charlene Stanek, John Pavelka, Dale Slocum.
 Third Row: Beatrice Ringer, Joyce Pfiffner, Jackie Rauscher, Dick Ruby, Gary Schroeder,
 Nancy Schrader, Betty Shobes, Betty Renner, Jean Stevenson, Nancy Peisel, Arthur Pollet.
 Fourth Row: Bill Phelps, Jim Saunders, Darold Schultz, Ray Sturn, Pete Pash, Jim Rich,
 Gary Snyder, Ron Robertson, Ed Powlishta, Ron Roushar, Gordon Pratt, Gordon Scott.

SOPHOMORE CLASS

First Row: Jenny Waychoff, Donna Wolverson, Nadine Tate, Rochelle Thurston, Donna
 Williams, Suzette Zertzman, Leo Wasendorf, Roger Welty.
 Second Row: Mary Tokheim, Florence Waters, Ed Vosmek, Ray Turner, Blair Williams,
 Bev Taylor, Eugene Welch, Jerry Wingett.
 Third Row: Larry Young, Rong Young, Melvin Wise, Doug Zanka, Bruce Trimble, Shirley
 Turner, Dick Youngquist, Don Wilson, Tom Van Amburg.





FRESHMEN CLASS

9 A OFFICERS

President Kalid Igram
 Vice President Pat Kehne
 Secretary-Treasurer Pat Barrett

First Row: Kristin Anderson, Bertha Cozart, Sandra Conklin, Elaine Andrews, Gloria Canfield, Scotta Buchan, Soleta Burns, Nancy Aten, Dave Arends, Dudley Coombs, Don Blessing, Gary Bergen, John Crumbaugh.

Second Row: Kay Darling, Lavonne Benters, Judy Dougherty, Sheryl Dlask, Bob Chester, Jon De Neui, Bob Bainter, David Brand, Leta Blood, Sheryl Byerly, Pat Barrett, Mary Anderson.

Third Row: Michael Bucklin, Richard Caldbeck, Douglas Blue, Charles Dostal, Dan Beam, Lloyd Applegate, Marvin Buckland, Donald Coonrod, Gordon Dolley, Dennis Buresh, Ardis Artz, Sandra Beers, Emma Burck.





First Row: Judy Hach, Judy Kinnan, JoAnn Henecke, Sharon King, Rosalie Halstead, Gary Kluber, Kalid Igram, Reggie Gibson, Don Jackson, Jon Ellerbrook, Richard Heaverlo, Kenny Krippner.

Second Row: Sharon Koster, Patricia Kehne, Jean Hartl, Karen Ellingson, Allan Fluke, Billy Hynds, James Hoffner, Don Knock, Janalyn Hamad, Marilyn Johnson, Joyce Heldt, Tommy Jones, Jim Harford.

Third Row: Norma Ireland, Betty Irwin, Eileen Krause, Bill Fowler, Parrell Kuehl, Charles Finnegan, Don Ewoldt, Dave Freeman, Jim Kelly, Lee Henderson, Bob Gard, Robert Hoagland, Jordan Jaeger.

FRESHMEN CLASS

First Row: Judy Mason, Cynthia Pattee, Sharon Logan, Darlene Nye, Carol Mc Vey, Barbara Mc Clean, Carol Mc Caughey, Alice Long, Charolette Myers, Marilyn Gunderson.

Second Row: Sharon Nolan, Nadine Nedrow, Pat Novak, Rose Mahnke, Fred Lenway, Dean Linsey, Bill O'Tool, Wayne Miller, Don Mc Donald, Jim Mc Donald.

Third Row: Therese Popelka, Pam Petrick, Dick Luedeman, Leo Melsha, Ronnie Prusek, James Lacy, Robert Newmire, Darrell Miskimen, Carolyn Peterson, Barbe Morrison, Sharon Mueller.

Fourth Row: Phillip Montgomery, Norman Lust, Gerry Mc Ginty, Craig Priebe, Douglas Pyle, Richard Nye, Barbara Morgan, Gary Parsons, Gary Lindsey, Stanley Long, Dick Moran, Eddie Mc Nabb.





First Row: Betty Scherbaum, Lara Rowray, Linda Sterling, Florence Story, Marice Schluntz, Susan Schultz, Judy Smith, Judy Simon, Virginia Rodman, Tom Rosenberger, Victor Root, Dean Tonkinson, Bill Turner.

Second Row: Donald Thomas, Dick Sweeting, Beverly Sedive, Connie Sullivan, De Lane Schultz, Ronald Siver, David Stokes, John Sedlacek, Ellen Taylor, Doris Sirowy, Jane Scott, Sue Sutliff.

Third Row: Carl Slocum, Bob Savel, Jerry Tharp, Tony Shobes, Barnard Schappert, Steve Reggentin, Larry Steggall, Dan Randall, Larry Tharp, John Robinson, Robert Sperry, Lowell Spencer, Richard Serbousek.

FRESHMAN CLASS

First Row: Linda White, Marvin Wilson, Earl Wims, Judy Welch, Judy Woods, Charlys Van Cleve, Renee Wagner, Bob Woolverton, George Walker, Leroy Van Amburg.

Second Row: Dixie Van Dyke, Margaret Wright, Donna Usher, Bill Vedder, Allen Vorel, Ted Webster, Charles Zvacek, Rena Van Dyke, Jean Ungethan, Bill Walters.

Third Row: Judy Wheeler, Alta Wilks, Karen Washburn, Roger Waline, Don Usher, Trent Winger, Carroll Vasbinder, Ronnie Volak, John Welbs, Bobby Woodhouse, Ronnie Winders.







Athletics



VARSITY



SOPHOMORE

FRESHMAN

CHEERLEADERS

VARSITY: Peggy Adams, Beth McDonald, Ann Cooper, Marilyn Mueller, Priscilla Klumpar, Judy Thomas, Alternates: Sandra Sirowy, Mercedes Lynberg

SOPHOMORE: Marcia Hansen, Pat Badger, Sandra Luke, Carol Greiner, Shirley Myers, Georgia Streeter, Alternates: Jean Lear, Carol Miller.

FRESHMEN: Doris Sirowy, Donna Usher, Therese Papelka, Charlys Van Cleve, Kristin Anderson, Sharon Mueller, Alternates: Judy Kinnan, Karen Ellingson.



CHEERLEADING

Cheerleading is a position highly coveted by almost every girl at RHS. Each spring elections are held for freshmen, sophomore and varsity cheerleaders. Any one can try out. Candidates are judged on personality, poise, general ability and eye contact with the crowd. Mrs. Eva Brackett is sponsor for varsity and sophomore cheerleaders while Mrs. Christine Hansen is in charge of the freshman squad.



COACHING STAFF

FOOTBALL

Varsity
Sophomore
Freshman

Head

G. W. Hidingier
C. C. Carney
G. M. Thomson

Assistant

S. A. Cooper
Frank McLeod
A. D. Anderson

BASKETBALL

Varsity
Sophomore
Freshman
Junior High

C. C. Carney
Frank McLeod
R. K. Marsh
A. D. Anderson

TRACK

S. A. Cooper

G. W. Hidingier
I. A. Ebinger

BASEBALL

G. M. Thomson

Robert Mahany

WRESTLING

W. S. Van Deest

CROSS COUNTRY

I. A. Ebinger

GOLF

C. W. Mau

TENNIS

W. S. Van Deest



Left: Honorary football captain Jim Floyd presenting the victory football to Coach Hidingier.

Right: Some of the trophies won in 1953





VARSITY

First Row: Mgr. Harold Kennedy, Dave Snyder, Ron Hamad, Tom Kelly, George Bell, John Yuva, Howard Tokheim, Willie Long, Dave Dostal, Mgr. Ed Wisnousky.
 Second Row: Dick Perry, Jim Floyd, Len Peck, Willie Holub, Darrell Pederson, Ellis Wiggins, Jim Caviness, Dave Crew, Dave May, Keith Karr, Lee Baird, John Woodhouse.
 Third Row: Coach Hidinger, Willie Krumbholz, Ron Helming, Lyle Chittick, Bill Mueller, Dale Rich, Danny Wessel, Dave Wessel, Ron Olson, Ken Wilson, Stan Aten, Bob Stastney, Dave Canfield, Coach Cooper.
 Fourth Row: Mgr. Wilbur O'Bannon, Tom Miller, Virgil McQueen, John Bush, George Kottmeier, Bob Clauson, Dwayne Wood, Gary England, Jack Artz, Richard Jedlicka, Paul Hanson, Mgr. Russ Pratt.

FOOTBALL

RHS	VARSITY	OPP.
0	Muscatine	
9	Tama	
13	Wilson	
0	Iowa City	
0	Clinton-Lyons	
19	Franklin	
13	Dubuque	
33	McKinley	



SOPHOMORE

RHS		OPP.
6	Wilson	7
12	Franklin	0
16	McKinley	6
7	Iowa City	0
12	Franklin	0
12	Marion	6
7	Wilson	13

RHS won the City Championship
 for the second successive
 year

Honorary Captain - Jim Floyd

FRESHMAN

RHS		OPP.
0	Wilson	12
14	McKinley	0
19	Franklin	0
6	Wilson	6
13	Franklin	0
7	McKinley	0

F
R
E
S
H
M
A
N



First Row: Bob Sperry, Don Blessing, John Crumbaugh, Jerry Kinnan, Dave Gray, Bob Chester, Bill Turner, Earl Wims, Reggie Gibson, Dudley Coombs, Jon Ellerbrock.

Second Row: Jerry Tharp, Bob Bainter, Ron Siver, Carroll Vasbinder, Bob Savel, Tom Jones, Dave Arends, Carl Slocum, Joe Wisnousky

Third Row: Coach Thomson, Marvin Buckland, Gordon Dolley, Jim Kelly, Garry Lindsey, Roger Waline, Craig Priebe, Don Usher, Norman Lust, Jack Kepler, Ed McNabb, Charles Dostal, Trent Winegar, Coach Anderson.

Last Row: Richard Serbousek, Dick Luedeman, Ron Floerchinger, Stanley Long, Lowell Spencer, Ron Winders, Phil Montgomery, Dean Lindsey, Tony Shobes.



First Row: Ron Dostal, John Hunter, Don Crumbaugh, Ed Elson, Darrel Baker, Tom Van Amburg, Joe Brink.

Second Row: Mgr. Allen Casner, Ray Turner, Jerry Wingett, Ray Sturm, Jim Saunders, Bev Taylor, George Meyn, Mgr. Don Kennedy.

Third Row: Coach McLeod, Bill Brouard, Douglas Zanka, Bruce Karr, Dean Mossbarger, Gary Robertson, Harold Clark, Coach Carney.

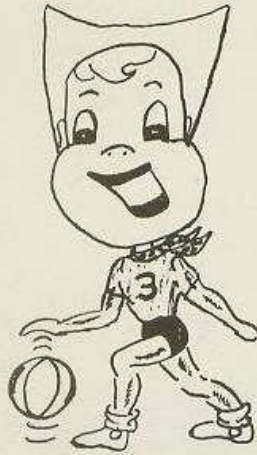
Fourth Row: Dick Ruby, Gene Floerschinger, Melvin Wise, Bob Hamed, Ed Powlishta, Richard Nye.

S
O
P
H
O
M
O
R
E





Front Row: Ken Walser, Ralph Plummer
 Second Row: Mgr. Ron Helming, Jack Pickerill, Darrell Pedersen, Dan Wessel, Dave Wessel, Ron Olson, Ken Wilson, David May, Mgr. Bill Mueller
 Third Row: Wayne Jackson, Kick Jedlicka, Ed. Davis, Lyle Chittick, Max Mochal, Ellis Wiggins, Dick Perry, Jim Kirby, Bill Riley.



FRESHMAN

	RHS	OPP.
Franklin	26	20
Marion	40	29
Wilson	35	38
McKinley	36	30
Iowa City	33	32
Franklin	43	28
McKinley	36	32
Wilson	38	43

BASKETBALL

VARSITY SOPHOMORE

	RHS	OPP		RHS	OPP.
Belle Plaine	41	43	Belle Plaine	50	36
Van Horne	59	55	Van Horne	52	38
University High	57	46	University High	31	29
Marshalltown	44	54	Marshalltown	50	33
Wilson	48	38	Wilson	30	42
Dubuque	46	72	Dubuque	55	73
Franklin	39	58	Franklin	40	42
Tama	61	42	Tama	51	31
Iowa City	55	59	Iowa City	43	51
West Waterloo	47	75	West Waterloo	45	54
McKinley	48	52	McKinley	44	46
Wilson	50	40	Wilson	43	57
Clinton	66	61	Clinton	57	63
Davenport	43	83	Davenport	48	51
Franklin	45	35	Franklin	51	54
McKinley	41	45	McKinley	52	65
East Waterloo	55	67	East Waterloo	53	58
Alumni	54	56			



SOPHOMORE

First Row: Jim Saunders, Everett Kelsey, Joe Neuhaus, Norman Lust, George Meyn, Gordon Pratt, Dennis Bradley.
 Second Row: Ray Sturm, Melvin Wise, Bev Taylor, Dean Mossbarger, Harold Clark, Bob Hamed, Bill Brouard
 Third Row: Mgr. Tom Mahaffy, Mgr. Mort Kennedy, Fred Lenway, John Pavelka, Tom Van Amborg, Ron Dostal, Bob Nelson, David Brand, Reggie Gibson, Mgr. Lanny Humbert



FRESHMEN

First Row: Jon Ellerbock, Robert Bainter, Ron Winders, Tammy Jones, Gordon Dalley
 Second Row: Charles Finnegan, Carrol Vasbinder, Jerry Tharp, Trent Winegar, Roger Waline, Robert Sperry
 Third Row: Mgr. Stanley Long, Jack Kepler, Edward McNabb, Coach Marsh, Don Usher, Charles Dostal, Mgr. Donald Thomas





First Row: Dick Ruby, Charles Dostal, Gordon Pratt, Dennis Benters, Paul Farrington, David Dishong, David Dostal, Loyal Adams.

Second Row: Bill Brouard, David May, Jack Pickerill, Dan Wessel, Ron Saylor, Lyle Chittick, Gale Morey.

Third Row: Coach Thomson, Jim Bailey, Jim Caviness, Ray Sturm, Willie Holub, Leonard Peck, Ralph Briles, Jim Floyd, Mgr. Harold Kennedy, Coach Mahany.

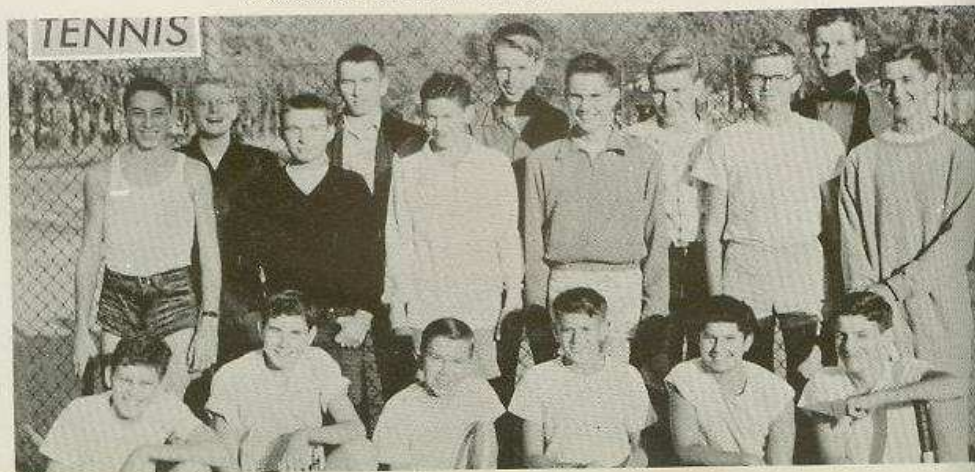
RHS		OPP	
2	Center Point	5	
3	Davenport	6	
1	Davenport	4	
2	McKinley	3	
6	Immaculate Conception	4	
4	St. Patricks	5	
2	Franklin	1	
10	Wilson	6	
9	West Waterloo	10	
6	West Waterloo	7	
2	Franklin	1	
3	Wilson	1	
5	McKinley	1	Won 6 Lost 7

Roosevelt won the city championship, won the district tournament, then lost in the final round in the sectional. Ron Saylor, '52, was voted honorary captain.

First Row: Larry Vavra, Leo Melsha, Ronald Friest, John Blanchard, George Walker, Laird Thomason

Second Row: Don Caviness, Phil Woodford, Leon Bausch, Lanny Humbert, Danny Randall, Jon Burns.

Third Row: Bob Nelson, Jim Kirby, Bruce Karr, John Hunter, Coach Van Deest.





Row 1: Coach Van Deest, Kaye Slocum, Tom Miller, Dick Luedeman, Len Peck, Willie Holub, Dave Snyder, Jim Caviness, Lee Baird, Bill Phelps, Dale Slocum, Earl Wims

Row 2: Bob Bainter, Jim Bailey, Dennis Benters, Lyle Heldt, Garlan Hoskin, Dennis Murphy, Jim Rich, Joseph Wisnousky, John Hunter, Dave Arends, Bob Wolverton, Mike Pederson, Herbert Richards

Row 3: Harold Kennedy, Bob Chester, Kalid Igram, Carl Slocum, Jack Artz, Ed Powlishta, Ed Wisnousky, Bruce Karr, Jerry Flaherty, Melvin Schappert, Bob Savel, Kip Hunter, Charles Caudill, James Turner, Burton Pattee

Row 4: Don Caviness, Terry Cairnes, Gary Robertson, Mike Mally, Paul Collins, Charles Polansky, Larry Wims, Bob Simon, Philip Montgomery, Ronnie Young, Gary Lindsey, Don Crumbaugh, James Hoffner, Don Siver, Richard Kula, John Crumbaugh

CROSS COUNTRY

VARSITY SOPHOMORE



Event	Place
City One Mile	1st
IHSAA Team	2nd
MVC One Mile	1st
IHSAA Cross Country	3rd

City Half Mile	1st
MVC Half Mile	2nd

First row: Len Hartl, Garlan Hoskin, Bruce Trimble, Jack White, Wayne Jackson
 Second row: Coach Ebinger, Charles Caudill, Ted Tonkinson, Charles Polansky, Dennis Benters, Don Davis, Jon Bruns, Jerry Pealer, Bob Simon, Ken Walser.

Row 1: Bob Simon, Gary Robertson, John Bush, Bill Phelps, Bev Taylor, Ken Walser, Ted Tonkinson, Tony Serbousek

Row 2: Bruce Trimble, Len Hartl, Garlan Hoskin, Dick Merrifield, Bob Knight, Herb Lee, Lee Baird, Dewey Bird

Row 3: Coach Hiding, Lavern Noeller, Wilbur O'Bannon, Dave Canfield, Dave Mitchell, Dave Shakespeare, Darrell Pederson, Karl Kullander, Willie Krumbholz, Coach Ebinger, Coach Cooper

Row 4: Ellis Wiggins, Russ Pidima, Bill Holsinger, Jack Minder, Harold Clark, Eldon Hasley, Gary Lester, Richard Jensen

TRACK





Perry, L. T.



Coach Hiding



Woodhouse, R. E.



Kirby, L. E.



Snyder, Q. B.



Krumbholz, R. G.

Canfield, R. H. B.

TINY TEDMEN



Olson, R. T.

Wessel, C.



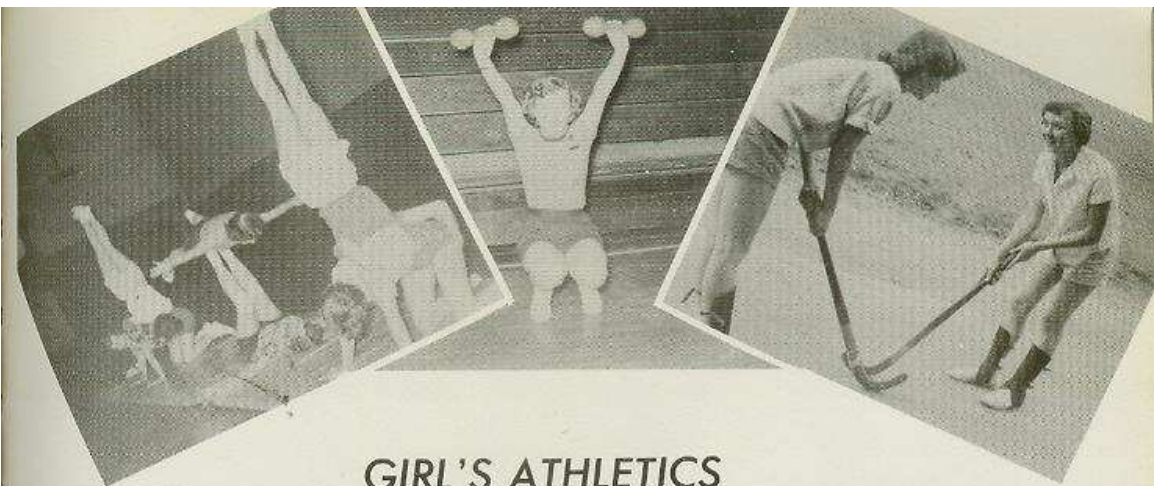
Floyd, F. B.



Caviness, L. G.

Holub, L. H. B.

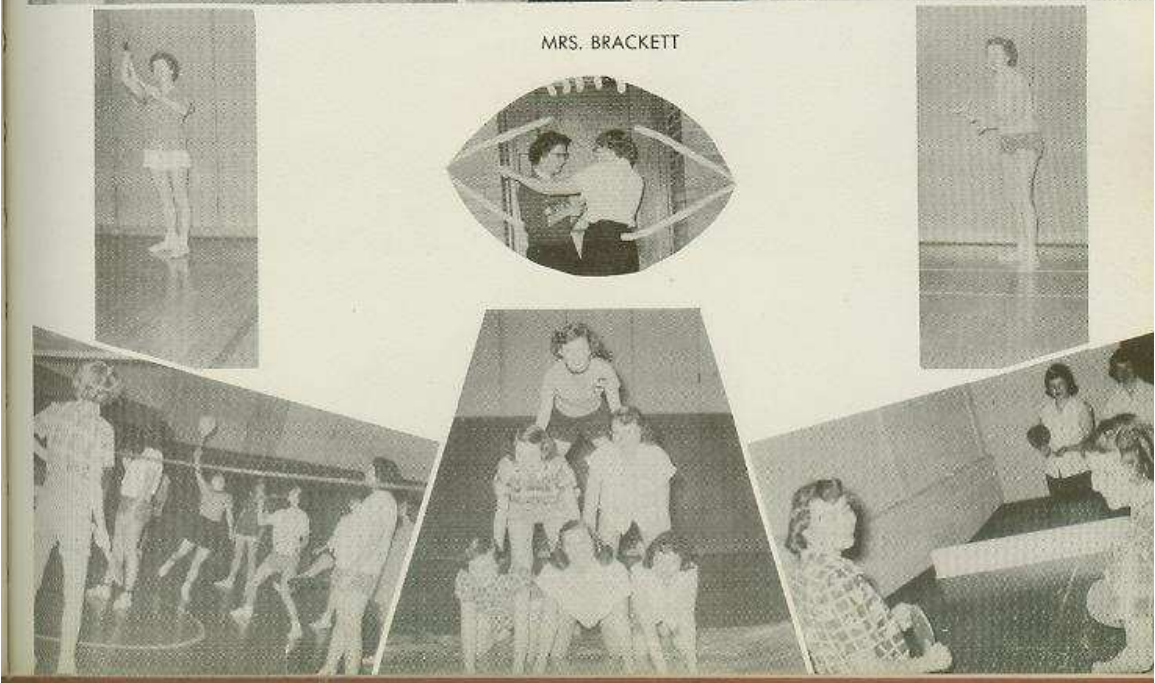




GIRL'S ATHLETICS



MRS. BRACKETT



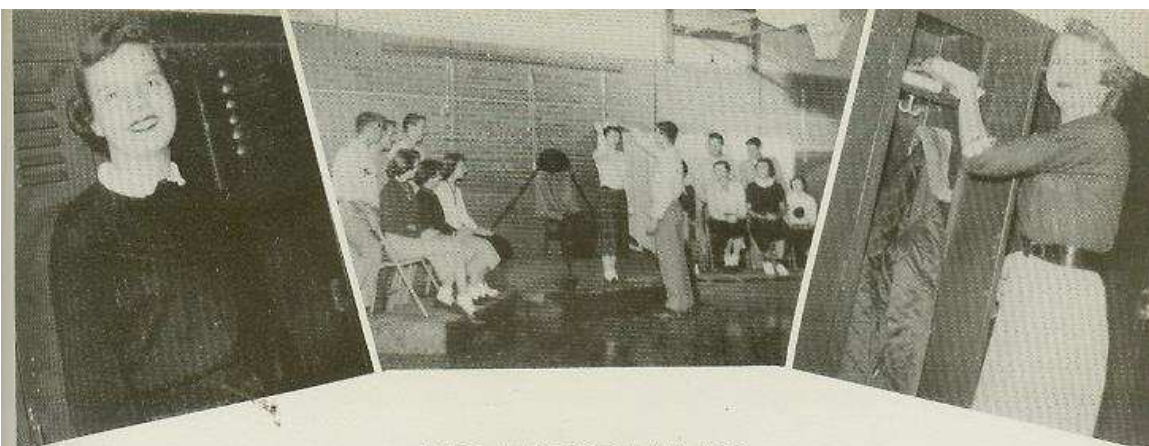


Activities



HOMECOMING QUEEN AND ATTENDANTS

Daisy Burgess, Beverly Clarke, Kathy Miller, Judy Thomas, Carolee Williams, Louise Ahlgren, and Maxine Koehn



HOMECOMING

Judy Thomas, 12A, was crowned Homecoming Queen of 1953 at the Homecoming pep Assembly October 29. Her attendants were Louise Ahlgren, Daisy Burgess, Beverly Clarke, Maxine Koehn, Kathy Miller and Carolee Williams. Atop a pink and blue float resembling a birthday cake bedecked with candles, the queen and attendants were presented to the cheering crowd at Kingston stadium during the halftime of the Roosevelt-McKinley game. Queen Judy and her court also reigned over the Homecoming dance October 30. The theme "Teddy's Birthday Ball", in commemoration of Theodore Roosevelt's birthday, was chosen, and the Variety Club band provided music.





CHOIR

SOPRANO

Leeta Bradshaw
 Darlene Bruns
 Daisy Burgess
 Jean Couser
 Norma Craig
 Darlene Darling
 Sandra Dietrich
 Joyce Floerchinger
 Irma Fye
 Sandra Harrison
 Jane Hauskins
 Emilie Kaub
 Lois Knigge
 Janice Kugel
 Marlene Lentz
 Joan Lewis
 Mercedes Lynburg
 Phyllis Machovec
 Sandra Nelson
 Barbara Sammon
 Lucie Schlessinger
 Carol Steyne
 Dorothy Travis
 Nancy Welsh
 Bever Lee Yanda

ALTO

Onnalee Allen
 Kathryn Brackett
 Marilyn Brown
 Nancy Clauson
 Virginia Craig
 Nancy Dilsaver
 Sandy Hansen
 Emily Hanzlik
 Jeneane Heath
 Jean Henderson
 Kay Herrbach
 Jeneane King
 Vera Krug
 Jean Lear
 Margot Lloyd
 Joan Meek
 Janet Nemecek
 Barbara Pealer
 Adele Richards
 June Richtarik
 Sandra Sirowy
 Shirley Sorenson
 Nadine Tate
 Judy Thomas
 Florence Waters
 Carolyn Wells
 Dwan Wells
 Judy Welsh
 Marilynn Worcester





CHOIR

TENOR

Leon Bausch
 Dennis Bradley
 Jon Bruns
 Terry Cairns
 David Canfield
 Allen Casner
 Bob Clauson
 David Dishong
 Robert Gard
 Sam Hill
 Wayne Kolosik
 Ken Krippner
 Norman Lust
 George Meyn
 Philip Montgomery
 Gary Schroeder
 Tony Serbousek
 Ted Tonkinson
 Bruce Trimble

BASS

Harold Clark
 Ronny Dostal
 Jim Floyd
 Ron Hamad
 Garlan Hoskin
 Roy Howland
 Bruce Karr
 Bob Kent
 Jim Kirby
 William Krumbholz
 Bill Mueller
 Pete Pash
 John Pavelka
 Darrell Pederson
 Melvin Schappert
 Don Silver
 LaRoy Sware
 Michael Travis
 Ellis Wiggins
 Phil Woodford
 Larry Young
 Ronnie Young

Accompanist: Janet Bausch



ONE TOUCH OF VENUS





First Row: Sharon Owen, Jean Thorson, Nancy Meyn, Carolyn Wells, Olga Jiroutek, Janice Donnan, Judy Thomas.
 Second Row: Miss Sheets, Barbara Geer, Beverly Bogart, Nancy Dilsaver, Emily Hanzlik, Kathy Miller, Yvonne Boom, Kay Herrbach.
 Third Row: Beth McDonald, Marilyn Worcester, Jim Caviness, Howard Kucera, Jack White, Bob Jaeger, Mike Travis.

NATIONAL THESPIANS

National Thespian Society is devoted to the advancement of Dramatic Arts in the secondary schools. Roosevelt troop 561 was established in June 1943.

LOCAL THESPIANS

First Row: Miss Sheets, Judy Clausen, Eleanor Thorson, Emily Kaub, Lucie Schlessinger, Diana Case, Jane Hauskins, Nancy Welsh, Sandra Harrison.
 Second Row: Phil Woodford, Vickey Warner, Judy Chapman, Lyle Chittick, Charles Shank, Max Mochal, Richard Jedlicka, Roger Palmer, Ray Olson, Don Siver.





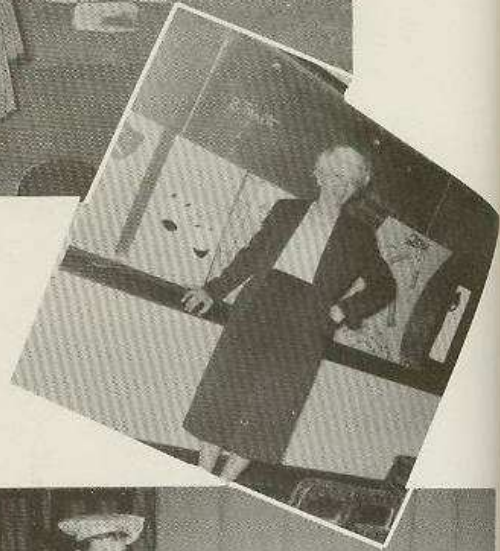
DRAMATICS

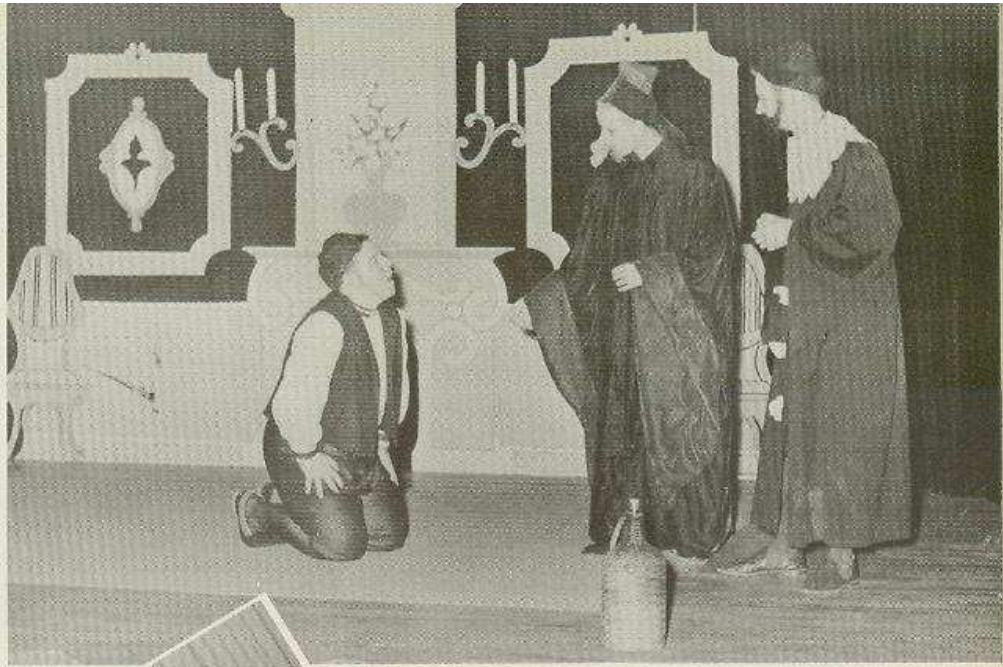
"SEVEN SISTERS"

Cast of Characters

(Presented October 24, 1953)

Mrs. Gyurkovics, a widow	Judith Chadima
Katinka	Beverly Bogart
Sari	Beverly Clarke
Elli	Nancy Dilsaver
Mitzi	Judith Thomas
Terka	Sharon Owen
Liza	Sandra Harrison
Klara	Janice Donnan
Colonel Radviany	Robert Jaeger
Gida Radviany, his nephew	Roger Palmer
Ferez Horkay	Max Mochal
Michael Sandorffy	Don Edgington
Toni Teleski	Don Siver
Janka	Michael Travis





DRAMATICS

"DOCTOR IN SPITE OF HIMSELF"

Cast of Characters

(Presented May 16, 1953)

Sganarelle, a woodcutter . . . Douglas Houghton
 Maritine, his wife Judith Thomas
 Robert, a neighbor Robert Jaegar
 Valene Richard Spicer
 servant to Geronate
 Lucas, Gerald Clouse
 servant to Geronate
 Jacqueline, Lucas wife Joan Mason
 Lucinde, Beverly Bogart
 Geronte's daughter



ORCHESTRA





and B A N D





First row: Maxine Koehn, Olivia Osborne, Barbara Pealer, Joanne Hays, Mary Ann Hanson, Nancy Meyn, Judy Clauson, June Richtarik.
 Second Row: Mike Travis, Marilyn Mueller, Veola Bainter, Janice Jenkins, Lucie Schluessinger, Karen Bean, Nancy Dilsaver, Joyce Pfiffner, Vicky Warner, Rosalie Bach.
 Third row: Barbara Geer, Beverly Bogart, Emilie Kaub, Bea Ringer, Virginia Craig, Jack White, Marlene Vosdingh, Mary Jo Byers, Tom Miller, Phil Woodford.
 Fourth row: Robert Nelson, Ronnie Dostal, Ronnie Young, Ellis Wiggins, Len Hartl, Douglas Zanka, Willie Holub, Howard Tokheim, David Snyder.

STUDENT COUNCIL

FALL

Pres. Dave Snyder
 Vice Pres. Willie Holub
 Sec.-Treas. Marilyn Mueller
 Sgt. at Arms Mike Travis

SPRING

Pres. Garlan Hoskin
 Vice Pres. Charles Shank
 Sec. Treas. Mary Ann Hanson
 Sgt. at Arms Ron Dostal

First row: Peggy Adams, Donna Wolverton, Marilyn Mueller, Rosalie Back, June Lambert, Carolee Williams, JoAnn Henecke, Judy Thomas.
 Second row: Tom Miller, Barbara Geer, June Richtarik, Vicky Warner, Beverly Bogart, Lucie Schluessinger, Judy Chadima, Emilie Kaub.
 Third row: Mae Igram, Ron Dostal, David Snyder, Jack White, Dick Perry, Loe Knigge, Carol Jenkins, Mary Jo Byers, Sandra Dieterich.
 Fourth row: Jim Caviness, Larry Young, Ellis Wiggins, Charles Shank, Garlan Hoskin, Jack Pickerill, Gary England, Ronnie Hamad.





First Row: Janice Donnan, Kay Herrbach, Carolyn Wells, Duva Hinshaw, Janet Bausch, Judy Thomas.

Second Row: Shirley Sorenson, Louise Ahlgren, Emily Hanzlik, Jane Hauskins, Kathy Miller, Diana Bishop, Jim Bailey.

Third Row: Mary Ann Hanson, Joanne Hays, Beth McDonald, Marilyn Worcester, Howard Kucera, Robert Stracke, Walter Huber.

ARISTOTELIAN

The Aristotelian Society is the Roosevelt Chapter of the National Honor Society. Members are chosen on the basis of scholarship, leadership, character, and service.

QUILL AND SCROLL

Quill and Scroll membership is an honorary award for journalists in the top one-third scholastically, after having served two semesters on the Record staff.

First Row: Carolyn Wells, Kathy Miller, Kay Herrbach.

Second Row: Diane Bishop, Beth McDonald, Ron Helming, Walter Huber, Mrs. Chehak





First Row: Philip Woodford, Mike Kane, Willie Holub, Gary England, Keith Karr, Dave Snyder, Jim Floyd, John Yuva.
 Second Row: Mr. Marsh, Dave Canfield, Steve Chandler, Ken Wilson, Ron Olson, Bruce Karr, Lyle Chittick, Willie Krumbholz, Jim Caviness.

RIFLE CLUB

The Rifle Club meets at the police station every week to practice two important things: safety and marksmanship with fire-arms.

KAPPA KAPPA RHO

Kappa Kappa Rho is the commercial club of Roosevelt. K K R, open to girls who are taking commercial subjects, helps its members to gain a better understanding of the business world.

First Row: Jeanie Lear, Jeanette McCormick, Shirley Sorrenson, Maxine Koehn, Margaret Dettelson, Rae Jean Guthrie, June Lambert Marilyn Mueller, Sandra Sirowy, Janet Nemecek, Carmen Proffitt, Onalee Allen, Marilyn Moser.

Second Row: Barbara Pealer, Joan Meek, Eleanor Thorson, Margaret Renner, Janet Bausch, Norma Barnard, Velma Pride, Carolyn Wells, Yvonne Wiltsey, Janice Kenyon, Elma Zachary, Alene Wilcox, Beverly Tow, Beverly Fry.

Third Row: Marlene Lentz, Phyllis Michaels, Ada Osborne Gerayn Wullner, Janet Lewis, Sandra Kleppien, Janet Woodard, Nadine Craig, Daisy Burgess, Mary Jo Byers, Nancy Welsh, La Vonne Lamar, Margot Lloyd, Carol Salat.

Fourth Row: Miss Williams, Lavonne Abernathy, Janice Kugel, Ercyle McQueen, Joyce Beck, Jean Forrest, Ardis Shupitar, Nancy Thompson, Emily Hanzlik, Nancy Dilsaver, Jean Couser, Doris Petrak, Dwan Welles, Nancy Schrader, Marle Vosdingh.





First Row: Donna Rodman, Sandra Hanson, Kay Herrbach, Eleanor Thorson, Rosalie Mally, Vera Krug, Lavonne Le Mar, Janice Donnan.

Second Row: Beverly Bogart, Dwan Wells, Judy Chadima, Catherine Colony, John Glackin, Priscilla Grigg, Vicky Warner, June Richtarik, Miss Terrill.

LA ESPANITA

The Spanish club of R H S meets twice a month. During their meetings they have interesting and amusing talks in Spanish.

PEP CLUB

The Pep Club is new this year at R H S . It was organized to boost the spirit at school and to increase the cheering section at games.

First Row: Jeanie Lear, Sandy Hanson, Evelyn Sedive, Kathy Rich, Barbara Canaday, Betty Rowden, Sandra Luke, Cheryl Korb, Marilyn Moser, Jackie McAllen, Joan Meek, Velma Pride, Sharon Danberg.

Second Row: Nancy Mc Intyre, Patsy Clark, Eleanor Thorson, Jane Hauskins, Jocelyn Chapman, Vicky Warner, Emilie Kaub, Sharon Kime, Joyce Floerchinger, Sharolyn Messinger, Phyllis Reitzel, Paty Ping, Mary Le Mumm, Janice Jones.

Third Row: Nadine Maurer, Phyllis Michels, Nancy Dilsaver, Gerayn Wullner, Janet Lewis, Suzette Zirtzman, Carolyn Pederson, Rosalie Bach, Kay Bruzek, Janet Hagerman, Phyllis Machovec, Karen Bean, Judy Owen, Kathleen Kennedy, Judy Clauson.

Fourth Row: Miss Webster, Adele Richards, Joyce Pfiffner, Carol Miller, Veola Bainter, Ardis Shupitar, Lois Knigge, Kathie Miller, Jean Couser, Marilyn Worcester, Virginia Craig, Nancy Schrader, Sandra Nelson, Dwan Wells, Nancy Welsh, Sandra Kleppien.





First row: Jim Keilholtz, Bob Bartosh, Jeanie Lear, Pat Badger, John Sedlacek, Ted Webster, Sharon King, Tom Rosenberger.
 Second row: Mr. Jahncke, Bill Hoffner, Dean Lindsey, Lowell Spencer, Gary Parsons, Charles Allers, James Lacy, James Oliver, Gary Kluber.

FILM CLUB

The purpose of this organization is to furnish projector operators for classroom films and present noon movies at a small fee.

MUSIC CLUB

The purpose of the Music Club is to create interest and appreciation in music.

First Row: Eunice Kleppe, Loren Long, Sharon Long, Nancy Bailey, Gwen Calwell, Leeta Bradshaw, Shirley Myers.
 Second Row: Marilyn Mueller, Judy Jellison, Judy Ernst, Priscilla Grigg, Beverly Clarke, Diane Bishop, Janet Bausch, Sherry Gregory.
 Third Row: Vicky Warner, Catherine Colony, Jackie Rauscher, Beverly Bogart, Doris Petrak, Lois Byers, Roberta Stracke, Pene Finnigan, Moe Igram, Mr. Anderson.
 Fourth Row: Ron Robertson, Jim Gloschen, Wayne Jackson, Fred Parks, Norman Jellison, Bruce Karr, Charles Shank, Jerry Kust, Robert Hulshizer, Paul Collins, Bev Taylor





First Row: Judy Kinnan, Pat Badger, Carol Greiner, Priscilla Klumpar, Miss Chambers.
 Second Row: Tom Van Amborg, Pat Jilek, Dennis Bradley, Nancy McHugh, Joyce Pfifner, Jeneane King.

MANUS CLASSICA

This club aims to further the members' knowledge of classical subjects and to acquaint them with facts of current classical interest.

FUTURE TEACHERS OF AMERICA

The purpose of F T A is to encourage young people to enter the teaching profession and to learn about the opportunities in teaching.

First Row: Jeanie Lear, Maxine Koehn, Sandra Miller, Marilyn Brown, Judy Welsh, Kathleen Kennedy, Sharon Danberg, Judy Thomas, Sharon Owen.

Second Row: Jannette McCormick, Judy Clauson, Carolee Williams, Beverly Clarke, Judy Chadimas, Diane Case, Bever Lee Yanda, Beverly Fry, Marilyn Ostrander.

Third Row: Mrs. Tarstenson, Ardis Shupitar, Joyce Denison, Kathy Miller, Blanche Klontz, Pat Jilek, Louise Ahlgren, Sandra Nelson, Jane Hauskins, Lois Knigge, Beth McDonald.

Fourth Row: Ron Hamad, Jim Kirby, Jim Cavines, Ellis Wiggins, Howard Kucera, Len Hartl, Dick Perry, Len Peck, Willie Holub, Dave Snyder.





First Row: Miss Hansen, Marice Schluntz, Pat Barrett, Charlys Van-Cleve, Renee Wagner, Nadine Nedrow, JoAnn Henecke.
 Second Row: Jane Scott, Ellen Taylor, Donna Usher, Doris Sirowy, Sharon Mueller, Eileen Krause, Pat Kehne, Jean Hartl, Karen Ellingson.

OFFICIALS CLUB

The Officials Club is a group of girls interested in gaining further knowledge of rules and officiating sports in Junior High School

BIOLOGY CLUB

The projects of the Biology Club were a booklet about turtles and lizards, the production of two plays and an initiation at Ellis Park.

First Row: Jeanie Lear, Susan Dunleavy, Kay Brusek, Mary Le Mumm, Pat Badger, Jenny Waychoff, Don Sedlacek.
 Second Row: Judy Jellison, Judy Ernst, Pene Finnigan, Carol Miller, Veola Bainter, Joyce Pfiffner, Elaine Starnard, Lois Sedlacek, Ann Phelps.
 Third Row: Don Caviness, David Darling, Jackie Rauscher, Sandra Dieterich, Bob Nelson, Gilbert Riley, Loren Long, Leo Wasendorf, Terry Cairns.
 Fourth Row: Ronnie Dostal, Paul Collins, Gordon Pratt, Ronnie Robertson, Ronnie Young, Bill Brousard, Betty Brecht, Dick Youngquist, Tom Van Amberg, Mr. Pattee.





First Row: Kay Herrbach, Shirley Sorenson, Nadine Krug, Vera Krug.
 Second Row: Mrs. Brackett, Louise Ahlgren Virginia, Craig, Adele Richards, Janet Lewis.

GIRLS' ATHLETIC ASSOCIATION

The G A A aims are to promote the physical interest of girls, develop high ideals of sportsmanship, clean minds, healthy bodies, and wholesome enjoyment of life.

USHERS CLUB

It is a service club of thirty members chosen from the ninth and high school who act as ushers, ticket takers, and ticket sellers at school events in the auditorium.

First Row: Sandra Harrison, Sharolyn Messinger, Darlene Bruns, Carolyn Wells, Jeannie Henderson, Kay Herrbach, Eleanor Thorson, Sandra Sirowy, Sharon Rawson, Kathleen Kennedy.

Second Row: Elma Zachary, Alene Wilcox, Judy Ernst, Mary Ann Hanson, Jo Ann Hays, Phyllis Machovec, Ruth Iben, June Richtarik, Margaret Dettelson, Sharon Danberg.

Third Row: Miss Prior, Priscilla Grigg, Barbara Geer, Catherine Colony, Jackie Rauscher, Sandra Nelson, Beverly Bogart, Emily Hanzlik, Carol Jenkins, Jane Erland, Miss Duncan.





First Row: Joan Lewis, Darlene Deason, Bever Lee Yanda, Margaret Detlefson, Joanne Hays, Sandra Kleppien, Judy Welsh, Carolyn Wells, Yvonne Wiltsey, Sandra Miller, Rosalie Mally.

Second Row: Mrs. Torstenson, Ardis Shupitar, Jane Hauskins, Jocelyn Chapman, Ron Hamad, Larry Wims, Jim Kirby, Joyce Dennison, Nancy Thompson, Carolee Williams, Mary Ann Hanson.

Third Row: Barbara Geer, Blanche Klontz, Pat Jilek, Keith Karr, Len Hartl, Byron Hensch, Jack Pickerill, Len Peck, Janice Kline, Marlene Vosdingh, Walter Huber.

SIGMA SIGMA

S S is a social studies club organized to stimulate interest of juniors and seniors in current affairs.

LETTERMEN'S CLUB

The purpose of the Lettermen's Club is to stimulate the interest and support of the student body and community in the athletic program of RHS.

First Row: Carl Slocum, Dale Slocum, Gilbert Riley, Howard Tokheim, John Yuva, Tom Miller, Jim Bailey, Kaye Slocum.

Second Row: Bill Phelps, Jack White, Len Peck, Virgil McQueen, Jim Saunders, Dave Dostal, Lee Baird, John Woodhouse, Jim Kirby, Willie Holub, Dave Snyder, Jim Floyd.

Third Row: Dick Perry, Darrell Pederson, Ellis Wiggins, Dave Canfield, Ron Hamad, Kenny Walser, David May, Bill Brouard, Ray Sturm, Dave Crew, Bruce Trimble, Lyle Chittick, Mr. Hiding.

Fourth Row: Jack Pickerill, Danny Wessel, Ken Helming, Harold Kennedy, Len Hartl, Ron Olson, Dave Wessel, Garlin Hoskin, Dale Rich, Kenny Wilson, Willie Krumbholz, Bill Ludwick.





First Row: Gwen Caldwell, Sally Miller, Lucille Elsbury, Jeanie Lear, Nancy Meyn, Barbara Canaday, Peggy Adams, Priscilla Klumpar, Donna Wolverton, Sharolyn Messinger, Marilyn Moser, Sandra Harrison.

Second Row: Carol Griner, Sandy Luke, Oliva Osborne, Marcia Hansen, Sandra Sir-owy, Joyce Floerchinger, Nadine Maurer, Jackie McAllen, Veola Bainter, Ann Cooper, Phyllis Machovec, Sandy Lipp, Marilyn Brown.

Third Row: Darlene Bruns, Diane Case, Louise Ahlgren, Betrice Ringer, Judy Jellison, Judy Ernst, Vicky Warner, Yvonne Boom, Daisy Burgess, Joane Berger, Joyce Beck, Joyce Pfiffner, Kathleen Kennedy, Sharon Danberg.

Fourth Row: Lavonne Abernathy, Carol Miller, Beverly Bogart, Sandra Nelson, Barbara Geer, Jackie Rauscher, Leiliani Nesselhauf, Margot Lloyd, Nancy Dilsaver, Karen Bean, Nancy Petsel, June Richtarik, Jean Stevenson.

SENIOR Y-TEEN

First Row: Patty Ping, Susan Dunleavy, Nancy McIntyre, Joan Meek, Ada Osborne, Judy Owen, Kay Herrbach, Yvonne Willsey, Janice Kenyon, Carolyn Wells, Jean Thorson, Sandra Miller, Judy Thomas, Evelyn Sedive.

Second Row: June Lambert, Marilyn Mueller, Priscilla Grigg, Mary Ann Hanson, Jane Hauskins, Jeannie Forrest, Lucie Schleussinger, Nancy Welsh, Suzette Zirtzman, Rosalie Bach, Carolyn Pederson, Eleanor Thorson, Shirley Sorenson, Sandra Kleppien.

Third Row: Kathleen Gitt, Pene Finnigan, Joanne Hays, Jean Henderson, Donna Henecke, Carol Jenkins, Juanita Hite, Jean Couser, Beth McDonald, Lois Knigge, Kathy Miller, Jackie McIntyre, Janet Hagerman, Emilie Kaub.





First Row: Judy Mason, Susan Schultz, Pat Barrett, Judy Kinnan, Cynthia Pattee, Sheryl Byerly, Mary Anderson.
 Second Row: Jo Ann Henecke, Judy Simon, Sharon Logan, Nadine Nedrow, Charlys Van Cleve, Gloria Canfield, Pam Petrick, Sharon King.
 Third Row: Rosalie Halstead, Judy Wheeler, Pat Novak, Karen Ellingson, Jean Hartl, Sandra Beers, Sharon Koster, Leta Blood, Elaine Andrew.
 Fourth Row: Sheryll Dlask, Judy Dougherty, Pat Kehne, Karen Washburn, Barbara Morgan, Jane Scott, Sue Sutliff, Alta Wilkes, Joyce Heldt, Miss Neal.

JUNIOR Y-TEENS

Junior Y-Teen, a freshmen Y. W. C. A. group, has programs, parties, and service projects stressing growth in personal and social living.

ART CLUB

First Row: Gwen Caldwell, Nancy McIntyre, Joyce Floerchinger, Jane Erland, Betty Renner, Donna Williams, Donna Wolverton, Leeta Bradsgaw, Cynthia Cabalka.
 Second Row: Judy McNeill, Jolene Johnson, Ann Cooper, Jean Hendsen, Adele Richards, Lucie Schleussinger, Leilani Nesselhauf, Joan Money Penny, Miss Harrington.
 Third Row: Carol Miller, Veola Bainter, Ann Webster, Sandra Nelson, Jack Campbell, Cliff Goldsberry, Florence Waters, Mary Jo Byers, Mary Tokheim, Richard Beck.
 Fourth Row: Terry Wahe, Paul Millis, Lanny Humbert, Ed Powlishta, Lyle Heldt, Paul Farrington, John Woodhouse, Norman Humble, Ray Olson.







First Row: Carolyn Wells, Olga Jiroutek, Cheryl Korb, Sandra Sirowy, Kay Herrbach, Margaret Detlefson, Joanne Hays.

Second Row: Janet Lewis, Rae Jean Guthrie, Diane Bishop, Jane Hauskins, Pat Melsha, Janet Hagerman, Sandra Nelson, Beth McDonald, Kathy Miller, Walter Huber.

Third Row: Bill Riley, Ken Walser, Harold Kennedy, Darrel Pederson, Ron Helming, Dan Wessel, Dave Wessel, Jim Caviness, Paul Millis, Dave Stewart.

RECORD STAFF

FALL SEMESTER

Carolyn Wells	Darrel Pederson
	Jim Kirby
Diane Bishop	Shirley Fuller
	Margaret Detlefsen
Kathy Miller	Pat Melsha
Patricia Jilek	
Beth McDonald	Kay Herrbach
Cheryl Korb	Rae Jean Guthrie
Walter Huber	
Jim Caviness	Janet Lewis
Jane Hauskins	Bever Lee Yanda
Dave Stewart	Beverly Tow
Dave Wessel	Darrel Pederson
	Jane Hauskins
Bill Riley	
Don Edgington	Paul Millis
Steve Chandler	Ron Helming
	Harold Kennedy
	Lorene Chehak
	Chester Mau

SPRING SEMESTER

Carolyn Wells	Shirley Fuller
Walter Huber	Mary Ann Hanson
Diane Bishop	Margaret Detlefsen
Kathy Miller	Pat Melsha
Jane Hauskins	Sandra Sirowy
Patricia Jilek	Rae Jean Guthrie
Janet Hagerman	Sandra Sirowy
Beth McDonald	Janet Lewis
Sandra Kleppien	Roger Palmer
Dave Wessel	Sandra Nelson
Jim Caviness	Ken Walser
Dave May	Dwayne Wood
Mary Ann Hanson	Bever Lee Yanda
Dave Stewart	Beverly Tow
Cheryl Korb	Diane Case
Dave Wessel	Barbara Rhodes
Olga Jiroutek	Jane Hauskins
Jim Kirby	Darrel Pederson
Don Edgington	Joanne Hays
Kay Herrbach	Ron Helming
Dan Wessel	Paul Millis
Jim Bailey	Harold Kennedy
Dave Crew	Lorene Chehak
Darlene Deason	Chester Mau
Joanne Hays	
Darrel Pederson	
Bill Riley	



Qualitone Annuals

BERRY PAINTER AND COMPANY, INC.
WABEON, KANSAS

