

**2018-2019
SCHOOL YEAR**

**Wright
Elementary School**



***The Wright Community learns in a student centered
environment where relationships are valued***

- Wright Staff

ABOUT YOUR CALENDAR/HANDBOOK

What does my child learn at Wright Elementary? What immunizations are required? What special programs do you offer? When should my child be at school?

Those are among the most often asked questions we hear from folks like you - parents who care about their youngsters and their schools. The answers to those questions and many more are right here in your handbook. We've tried to put together a handy reference book and calendar you'll want to use all year long. We hope you'll find everything you need to make this year especially rewarding.

We encourage parents and children to review this handbook together and become familiar with Wright's policies and procedures. If we've forgotten anything, just give us a call. We're always glad to hear from you.

SCHOOL HOURS

Early Learning Preschool (ELP)

Monday - Thursday...8:50 a.m.-11:50 a.m. or 12:50 p.m.-3:50 p.m.

Kindergarten - 5th Grade: 8:50 a.m. to 3:50 p.m.

Students in grades K-5 should observe the following schedule:

8:15 a.m.

Students may begin to enter the building,
sit by their lockers, or go to breakfast.

8:50 a.m.

Tardy bell rings; school begins.

2:20 p.m.

Friday early dismissals.

3:50 p.m.

Students are dismissed.

EXCUSING CHILDREN FROM SCHOOL

No child will be released from class to leave the building during the school day without approval from the office. If you need to release your child from class prior to 3:50 p.m. please sign him/her out in the main office. During the school day, a child will not be released to anyone except parents/guardians or adults specifically designated in student emergency information without parental approval.

When parents contact the school by telephone for the child to be dismissed, the call may need to be verified. Please do not be offended, as your child's safety is our main concern.

ABSENCE AND TARDINESS

Regular student attendance is critical to school success. Parents are urged to have their children in school each and every day unless, of course, illness prevents them from coming. If your student will be absent, please call the Attendance Line at **319-558-2278**. If you fail to call the school by 10:00 a.m. we will attempt to contact you to inquire about your child's absence. If your child is chronically absent or tardy, the school attendance team will proceed as follows:

3 absences – Contact with Family

6 absences – Family Meeting and Attendance Plan

9 absences – Family Meeting and District Contract

12+ absences – Truancy Officer and possible County Attorney referral

LUNCH TIMES

Kindergarten	11:10 a.m. – 11:40 a.m.
3 rd Grade	11:15 a.m. – 11:45 a.m.
1 st Grade	11:45 a.m. – 12:15 p.m.
4 th Grade	11:50 a.m. – 12:20 p.m.
2 nd Grade	12:25 p.m. – 12:55 p.m.
5 th Grade	12:30 p.m. – 1:00 p.m.

All visitors are required to stop in the main office and sign in prior to a visit in the building.

===== PARENT OPPORTUNITIES =====

Parents are an essential part of the Wright Educational Team. Volunteering opportunities abound here at Wright, whether you have lots of time to give or only a spare hour or so a month! Parents are encouraged to:

- become actively involved in PTO
- serve as a homeroom parent for your child's class
- work on the PTO annual membership campaign
- volunteer for special projects at Wright
- assist teachers with clerical tasks at school or at home
- work with students and teacher in the classroom
- tutor individual students or small groups that need extra assistance

===== FEES AND SUPPLIES =====



Parents are responsible for providing their child's school supplies.

A fee is assessed to cover the cost of curriculum materials. You may pay your fees by cash or check to the school office or pay online with a credit card. A

link to School Cash Online is available on our Wright School Web site.

In the event your check is returned it will be represented electronically along with the state fee.

===== FIELD TRIP PERMISSION =====

Field trips are designed to supplement and enhance the learning experiences of children. All students will be required to have field trip permission on file approved by a parent. This eliminates the need for individual permission slips for each field trip. You will be notified of your child's field trips through the school Web site, classroom newsletters, student planners, and/or individual notes from the classroom teacher.

===== PICKING CHILDREN UP AT SCHOOL =====

Parents or anyone picking up Wright students are to meet outside, not in the hallways after school. Although we want our families to feel welcome in our building, we also want to preserve the safety we have created throughout the day and make the best possible use of the instructional time we have with your children. Sometimes children who see parents or friends in the hall will become distracted and miss instructions from the teacher. Also, children sometimes find it difficult to “maneuver through traffic” to get to their lockers at the end of the day. By meeting your child outside the building, you are allowing instruction to continue right up to the dismissal bell as well as allowing your child to gain independence. We thank you for your cooperation as we strive to meet the educational, emotional, and social needs of all of Wright's students.



===== STUDENT ENGAGEMENT SPECIALIST =====

The Student Engagement Specialist (SES) works with parents, students and teachers in the school, addressing issues that create road blocks to optimal student learning. The SES works with parents advocating on their behalf in the community and to help improve student attendance. The SES works with students to address behaviors that impede their learning and with teachers to help facilitate a productive classroom environment.

ShaNell Young 319-558-3275

All outside doors will remain locked from 8:50 a.m. to 3:50 p.m. for safety purposes.

2018**August****2018**

<i>Sunday</i>	<i>Monday</i>	<i>Tuesday</i>	<i>Wednesday</i>	<i>Thursday</i>	<i>Friday</i>	<i>Saturday</i>
			1	2	3	4
5	6	7	8	9 <i>New Teacher Pre-Service</i>	10 <i>New Teacher Pre-Service</i>	11
12	13 <i>New Teacher Pre-Service</i>	14 <i>New Teacher Pre-Service</i>	15	16	17 <i>Teacher Pre-Service</i>	18
19	20 <i>Teacher Pre-Service Id al-Adha</i>	21 <i>Teacher Pre-Service Id al-Adha</i>	22 <i>Teacher Pre-Service</i>	23 <i>Day 1 First Day of Classes- Early Dismissal 2:20</i>	24 <i>Day 2 Staff Learning Day – Early Dismissal 2:20</i>	25
26	27 <i>Day 3</i>	28 <i>Day 1</i>	29 <i>Day 2</i>	30 <i>Day 3</i>	31 <i>Day 1 Staff Learning Day – Early Dismissal 2:20</i>	

WRIGHT ELEMENTARY SCHOOL

Grades: Kdgn. thru 5 13 classrooms
Early Learning Preschool 2 classrooms
ELL..... 1 classroom
Behavior Focus 1 classroom

Address: 1524 Hollywood Blvd NE
Cedar Rapids, IA 52402

Office Phone..... 319-558-2278
Principal..... Brian Krob
Secretary Justine Lieurance
Attendance Line..... 319-558-2065

<http://wright.cr.k12.ia.us>

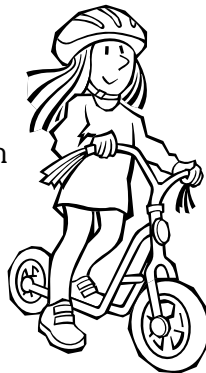
SKATEBOARDS, IN-LINE SKATES, HEELIES, & SCOOTERS

Use of skateboards, in-line skates, heelies, and scooters are prohibited on any school property on the advice of the School District Safety Committee and the District's Insurance carrier.

BICYCLES

Students riding bicycles to school should:

- 1) Follow traffic regulations.
- 2) Use courtesy and care in riding.
- 3) Park and lock bikes in the racks at the south side of the school.
- 4) Walk bikes while on school grounds.
- 5) Wear a safety helmet.



TELEPHONES AT SCHOOL

Cell Phone Policy

As technology continues to make life easier in some areas it can also create more challenges. Cell phones have done wonders for communication; however in a school setting it has created obstacles. Students struggle with appropriate cell phone use and this disrupts the learning environment. Furthermore, a growing concern of harassment, bullying, and academic cheating is a concern with cell phone usage. Due to the many distractions a cell phone can create, students are required to turn cell phones off before entering the school building. Cell phones are to be placed in the students' locker* and must remain there unused until the end of the school day. At the end of the day and once the student is out of the building, the phone may be used. If a parent needs to get in contact with a student they need to contact the school to make arrangements for messages to be given to their child. If a student is ill, he or she needs to report to the clinic at which time a decision will be made whether or not to call home.

1. If a student is found to be using a cell phone it will be confiscated and the student will be given a verbal warning. For the first offense, the cell phone will be turned in to the main office. The student can pick up his or her cell phone at the end of the school day.
2. If the cell phone is confiscated a second time the student will receive a consequence. The phone will be held in the office and will require a parent/guardian to pick it up.
3. If the cell phone is confiscated a third time a parent/ guardian must pick the cell phone up in the office and the student may have other consequences.

*Please note: Lockers at Wright School do not have locks or combinations. **Wright School is not responsible for lost or stolen cell phones brought to school.**

School telephones are to be used by students only with permission from staff. Permission will be given to students to make phone calls for class assignments or emergencies. Students should make their after school plans with their parents prior to leaving for school in the morning.

The Wright Community learns in a student centered environment where relationships are valued

BREAKFAST AND LUNCH

Provided through the Community Eligibility Provision (CEP) at no charge.

What is CEP:

The Healthy, Hunger-Free Kids Act provides schools, which predominately served areas of high economic need, an option for meal certification under the **Community Eligibility Provision**. Under this provision:

Qualifying schools are allowed to serve breakfast and lunch at **no charge** to all students in that building without having to collect and process individual meal applications.

Under CEP, individual students do **not** have eligibility status, the school has the CEP designation based on the number of students directly certified.

How does CEP work:

All enrolled students receive one breakfast and one lunch daily at **no cost** during school year.

Families do not need to complete a Free and Reduced Application for meal eligibility.

Families not directly certified through the State or on a family application will need to complete the Educational Benefit Survey to determine eligibility (based on income) for

Title I and School Fee Waivers.

What is not covered by CEP:

- Adult meals
- Siblings in non-CEP buildings
- Extra milk, second entrée, second meal, or ala carte
- Preschool snacks

Students with meal account balances:

Students with negative balances will remain the responsibility of the family. Students with positive balances can be used for extra milk, ala carte or can remain on the account for future use. Money can be transferred to siblings in non-CEP schools.

Where does money come from:

Federal funds through the Healthy, Hunger-Free Kids Act.

Exciting News

Your School offers Breakfast and Lunch at No-Cost

Through Community Eligibility Provision (CEP)

- **All students** shall receive one breakfast and lunch daily at **no charge**.
- May purchase extra milk, seconds and/or ala carte with cash or money in their meal account.
- Students that attend this school will not need to complete a free and reduced application
- Be sure to complete Parent Permission Form for School Fee Waiver consideration.
- Students, including siblings, attending schools not covered under CEP can still be considered for free or reduced meals by completing the online Free and Reduced Lunch Application.

Apply online at
www.lunchapp.com

*CEP allows the Cedar Rapids
Community School District to
expand access to healthy school
meals for student success.*

All outside doors will remain locked from 8:50 a.m. to 3:50 p.m. for safety purposes.

2018**October****2018**

Sunday	Monday	Tuesday	Wednesday	Thursday	Friday	Saturday
	Day 3 1	Day 1 2	Day 2 3	Day 3 4	Day 1 5 <i>Staff Learning Day – Early Dismissal 2:20</i>	6
7	8 <i>Staff Learning Day – NO SCHOOL FOR STUDENTS Columbus Day</i>	9 <i>Staff Learning Day – NO SCHOOL FOR STUDENTS</i>	Day 2 10	Day 3 11	Day 1 12 <i>Staff Learning Day – Early Dismissal 2:20</i>	13
14	Day 2 15	Day 3 16	Day 1 17	Day 2 18 <i>Parent & Teacher Conferences 4:00 – 8:00pm</i>	Day 3 19 <i>Staff Learning Day – Early Dismissal 2:20</i>	20
21	Day 1 22	Day 2 23 <i>Parent & Teacher Conferences 4:00 – 8:00pm</i>	Day 3 24 <i>School Picture Retake</i>	Day 1 25	Day 2 26 <i>Staff Learning Day – Early Dismissal 2:20 America Reads Day</i>	27
28	Day 3 29	Day 1 30	Day 2 31 <i>Halloween</i>			

===== LATE START/EARLY DISMISSAL PROCEDURES =====

On rare occasions it may be necessary to begin school later than 8:50 a.m. or dismiss before the usual 3:50 p.m. dismissal time. Late starts and early dismissals will be broadcast on radio, TV, and the internet. To be sure children are safe and parents are informed, the school recommends the following:

- Decide **ahead of time** with your child where he/she is to go if school begins late or is dismissed early. It will not be possible to contact each parent in the event of a late start or early dismissal.
- Have an alternate plan in case the first plan doesn't work for any reason.
- Instruct your child to phone you (or someone you designate) at work to report in as soon as they arrive home.
- ELP classes will not take place on scheduled Early Dismissal days or on Late Start days.

===== RECESS POLICY FOR COLD WEATHER =====

If the temperature or windchill is 10 degrees or more, students will go outdoors during recess. This will be determined by scanning the weather report. Otherwise, students will stay indoors during recess.

Generally speaking, during the months of December, January, February and the first half of March, all students need to wear boots, a warm winter coat, mittens and something to cover their head as recess will be outside if the temperature is acceptable for outside recess. At times we'll have either:

- Regular outside recess
- Blacktop outside recess or,
- Inside recess

If at all possible, regular outside recess will be held. Students need to be dressed for outdoor activity.



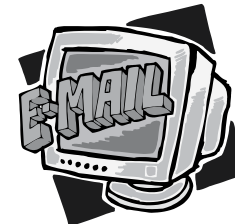
===== EMERGENCY INFORMATION =====

All parents are required to complete an online emergency form so they or their designee may be contacted in case of an emergency involving their child. The online form may be accessed and updated anytime throughout the year using PowerSchool for Parents. The link to PowerSchool for Parents is available on the front page of the Wright School website. You may also contact the school office directly at 319-558-2278 to make changes. It is very important to keep your information current. **We need to be able to contact you quickly should there be an emergency at school involving your child.**

===== COMMUNICATIONS =====

Teachers will sometimes telephone or e-mail parents at home or at work during the school day if there is a need to discuss a situation involving their child. Other times, teachers will communicate in writing. Students in grades 1-5 are given a student planner, which teachers use as a vehicle to communicate with parents. Parents are also encouraged to share their concerns in writing through their child's planner. Parent calls to teachers should be made between 8:10 a.m. and 8:50 a.m. or immediately after school. Calls which are received during class time will require a call-back since teachers are not available during class time except for emergencies. Every teacher has a voice mailbox.

Teachers may also be reached through e-mail. Staff email addresses are available on the Wright School Web site. <http://wright.cr.k12.ia.us>



All visitors are required to stop in the main office and sign in prior to a visit in the building.

2018**November****2018**

<i>Sunday</i>	<i>Monday</i>	<i>Tuesday</i>	<i>Wednesday</i>	<i>Thursday</i>	<i>Friday</i>	<i>Saturday</i>
				Day 3 1	Day 1 2 <i>Staff Learning Day – Early Dismissal 2:20</i>	3
4	Day 2 5	Day 3 6	Day 1 7	Day 2 8	Day 3 9 <i>Staff Learning Day – Early Dismissal 2:20</i>	10
11 <i>Veterans Day</i>	Day 1 12	Day 2 13 <i>Family Math & Reading Night 5:00 – 7:00pm</i>	Day 3 14	Day 1 15	Day 2 16 <i>Staff Learning Day – Early Dismissal 2:20</i>	17
18	Day 3 19	Day 1 20	21 <i>Staff Progress Reporting Day – NO SCHOOL FOR STUDENTS</i>	22 <i>Thanksgiving Day</i> <div>HOLIDAY BREAK</div>	23	24
25	Day 2 26	Day 3 27	Day 1 28	Day 2 29	Day 3 30 <i>Staff Learning Day – Early Dismissal 2:20</i>	

HOMWORK

At the discretion of the teacher, certain activities are used as extensions of the school program in primary and intermediate grades.

Examples of activities that might be used include:

- make-up work after absences
- creative writing work to be done at home
- participating in home or community safety programs
- practicing individual mathematics or sight word flash cards
- independent reading practice
- extra work in reinforcing basic skills in mathematics, language arts, or reading
- collecting or reading material and/or writing reports for any class
- constructing models or projects
- attending community events or viewing special TV programs related to any classroom subject



ELEMENTARY COUNSELOR

The Elementary School Counselor works with parents, teachers, and children in the school. Prevention of problems is a key part of the philosophy of a counseling and guidance program. The counselor works in classrooms on developmental activities and is available to help individual students with concerns.

Gerry Ernzen 319-558-3104

The Wright Community learns in a student centered environment where relationships are valued

LIBRARY/INSTRUCTIONAL MEDIA CENTER (IMC)

The Media Center exists for the support of the curriculum as well as for enrichment. The Center offers a selection of well over 8,000 books and a collection of audio-visual media in a variety of formats. Children, as well as parents, may check out materials any day. Students select their materials with the guidance of the media specialist and their teachers. **Parents are encouraged to read to their children and have their children read to them at all grade levels.**



Books are checked out for two weeks and may be renewed. There are no fines for overdue books, but your child is expected to assume the responsibility for returning these materials on time. When an item has been damaged beyond use, or is lost, the parent will be responsible for replacement.

BIRTHDAY TREATS



With the rise of childhood obesity in America and following the initiatives set forth by the Cedar Rapids Community School District's Blue Zone regulations, **NO home-made or store bought food items will be allowed at school.**

DRILLS - FIRE, TORNADO, AND CIVIL DEFENSE



Every classroom in the building will receive special instructions for emergency drills, including routing procedures. Because of the need to receive emergency directions in a large group, the students are expected NOT to talk during drills, but to maintain a quiet, calm, and orderly discipline.

2018**December****2018**

Sunday	Monday	Tuesday	Wednesday	Thursday	Friday	Saturday
						1
2 <i>December 2- December 10 Hanukkah</i>	Day 1 3	Day 2 4	Day 3 5	Day 1 6	Day 2 7 <i>Staff Learning Day – Early Dismissal 2:20</i>	8
9	Day 3 10	Day 1 11 <i>4th & 5th Grade Music Concert at Harding MS 6:30pm</i>	Day 2 12	Day 3 13	Day 1 14 <i>Staff Learning Day – Early Dismissal 2:20</i>	15
16	Day 2 17	Day 3 18	Day 1 19	Day 2 20	Day 3 21 <i>Staff Learning Day – Early Dismissal 2:20</i>	22
23	24	<i>Christmas</i> 25	26	27	28	29
	HOLIDAY BREAK					
30	31 HOLIDAY BREAK					

===== HOME-SCHOOL COMMUNICATION =====

Parents are encouraged to call the school whenever there is a question or problem. To help make these communications more productive and positive, parents should:

- 1) Contact the person closest to the situation of concern. If it involves the classroom, call the teacher.
- 2) Contact the principal if the question or concern involves any other area or the management of the school.
- 3) Remember the staff wants to help and values the benefit of working with the parent to discuss a concern or problem.

===== PARENT INFORMATION =====

Wright School is cutting down on paper use and consumption. School announcements may be found on our school website <http://wright.cr.k12.ia.us>. Please check our website often for the latest information. A limited number of paper copies will be available at the school office but will not be routinely sent home with students. Some information such as picture order forms will still come home with students so please be sure to check your student's backpack or planner regularly.

Children will be expected to leave school grounds following dismissal and check in at home or with a babysitter before they are allowed to play on equipment after school. The playground will be open again for students at 5:00 p.m.

===== DRESS =====

Your child will be active every day at school. **Appropriate dress can be an asset to your child's learning. Extremes in dress and/or hair color/style are to be avoided.** Extremely baggy pants, sandals, earrings and necklaces limit movement and could prove to be dangerous. Any clothing deemed to be disruptive or inappropriate by the principal will not be allowed. Shirts with messages that advertise tobacco products, and/or alcoholic beverages are prohibited. Students may be asked to turn a shirt inside out or to change the inappropriate garment.

In order to avoid lost items of clothing, please mark all items with the student's first and last name.

All visitors are required to stop in the main office and sign in prior to a visit in the building.

2019**January****2019**

Sunday	Monday	Tuesday	Wednesday	Thursday	Friday	Saturday
		1 <div>HOLIDAY BREAK</div> New Year's Day	Day 1 2 Classes Resume	Day 2 3	Day 3 4 Staff Learning Day – Early Dismissal 2:20	5
6	Day 1 7	Day 2 8	Day 3 9	Day 1 10	Day 2 11 Staff Learning Day – Early Dismissal 2:20	12
13	14 Staff Learning Day – NO SCHOOL FOR STUDENTS	Day 3 15 Begin 2nd Semester	Day 1 16	Day 2 17	Day 3 18 Staff Learning Day – Early Dismissal 2:20	19
20	21 Staff Progress Reporting Day– NO SCHOOL FOR STUDENTS Martin Luther King's Birthday	Day 1 22	Day 2 23	Day 3 24	Day 1 25 Staff Learning Day – Early Dismissal 2:20	26
27	Day 2 28	Day 3 29	Day 1 30	Day 2 31		

STUDENT HEALTH AND WELL-BEING

Health Screenings – Hearing, Dental, BMI, SEB, and Vision

If you do not want your child to participate in school health screenings, please notify the health office in writing at the beginning of the year.

Hearing Screening: Grant Wood Area Education Agency (GWAEA) screens all students in Alternative Kindergarten (AK), kindergarten, and grades 1, 2, and 5. Students in the Early Learning Program with IEP's will be screened. Students in grades 3, 4, middle, and high school, who are new to the school that don't have a documented normal hearing test, and some students with a history of known hearing loss will also be tested. Follow up testing may occur periodically if previous hearing test results were not within normal limits. Parents/guardians with concerns about their child's hearing should contact the school nurse.

Dental Screening: St. Luke's Dental Health Center and HACAP partner to offer dental screenings to all Early Learning Programs, AK, kindergarten, grades 2 and 5, all students in elementary special education and elementary ELL programs, as well as others in selected grades. In addition to dental screenings, fluoride varnish application and dental sealants are offered to children enrolled in qualifying schools. Children will be bringing home a consent form to be completed by the parent/guardian to approve these dental services.

Iowa law requires that any student entering kindergarten and ninth grade provide a valid Iowa Department of Public Health Certificate of Dental. (This form is available from your school nurse, dentist, or on the CRCSD Web site in the Student Services/Health Services section.) The goal of this legislation is for each student to receive the benefit of early and regular dental care including prevention, and to establish a dental home for children who may not have one. It is also an opportunity to provide outreach to those families who have trouble accessing care.

BMI Screening: District health and/or PE staff members will screen height and weight of kindergarten and 5th grade students. If your child had a physical for this school year, we may use that height and weight data to calculate your child's BMI.

Social, Emotional, Behavioral Screening: Social, Emotional, Be-

havioral (SEB) Screening: Students in grades Kindergarten, 3, 5, 7, and High School will be screened to assess social, emotional, and behavioral well-being. The purpose of the screening is to identify areas where students may need some additional support. Follow up screening and parent communication may occur if the results indicate the need for further attention. Parents/guardians with concerns about their child's social, emotional or behavioral well-being should contact the counseling or health office.

Vision Screening: Iowa law requires that any student entering kindergarten and third grade have a vision screening. To be valid, the vision screening shall be performed no earlier than one year prior to the date of enrollment and no later than six months after the date of the child's enrollment into both kindergarten and third grade. The vision screening may be conducted by a physician, optometrist, advanced nurse practitioner, physician assistant, local public health department, public or accredited nonpublic school, community based organization, free clinic, or child care center. An online screening may be conducted by a child's parent or guardian. A Certificate of Vision Screening Form is available on the district website in the student services/health services section. If the school does not receive a completed screening form kindergarten students will receive a consent form with the option to have your child screened at school and results sent to Iowa Department of Public Health. Third grade students will be screened at school and results sent to Iowa Department of Public Health. Parents/guardians with concerns about their child's vision should contact the school nurse/health office.

HEALTH INFORMATION

The school should be informed of students' significant health conditions. The information will be shared only with school staff that need to know about your child's condition. If the condition requires special adjustments in the school environment, the school nurse should be contacted. Any changes in student health status during the year should be communicated to the school nurse or health secretary. Wright Health Office 319-558-2310.

All outside doors will remain locked from 8:50 a.m. to 3:50 p.m. for safety purposes.

2019**February****2019**

<i>Sunday</i>	<i>Monday</i>	<i>Tuesday</i>	<i>Wednesday</i>	<i>Thursday</i>	<i>Friday</i>	<i>Saturday</i>
					Day 3 Staff Learning Day – Early Dismissal 2:20 1	2
3	Day 1 4	Day 2 5	Day 3 6	Day 1 7	Day 2 8 Staff Learning Day – Early Dismissal 2:20	9
10	Day 3 11 <i>Casual Picture Day</i>	Day 1 12 <i>Lincoln's Birthday</i>	Day 2 13	Day 3 14 <i>Parent & Teacher Conferences 4:00 – 8:00pm</i>	Day 1 15 Staff Learning Day – Early Dismissal 2:20	16
17	Day 2 18 <i>President's Day</i>	Day 3 19 <i>Parent & Teacher Conferences 4:00 – 8:00pm</i>	Day 1 20	Day 2 21	Day 3 22 Staff Learning Day – Early Dismissal 2:20 <i>Washington's Birthday</i>	23
24	25 Staff Progress Reporting Day – NO SCHOOL FOR STUDENTS	Day 1 26	Day 2 27	Day 3 28		

STUDENT ILLNESS OR INJURY DURING THE SCHOOL DAY

Students are sent to the clinic if they are injured or appear ill. Health office staff will attend to the student's complaint. This may include providing first aid, asking the student questions about how he/she feels, taking a temperature, making observations, talking to the teacher, and contacting the school nurse. If a student has a temperature of 100° F. or higher and/or illness related vomiting or diarrhea, the parent/guardian will be called and the student will be sent home. Other symptoms that influence the decision to send the student home include general appearance and functioning in the classroom. After a period of observation a decision will be made to do one of the following: (1) Attempt to notify the parent/guardian; (2) Allow the student to rest in the health office for a brief period. The student is to be fever-free without fever reducing medication before returning to school. Parents will also be notified of injuries that appear to be serious in nature or require medical attention.

HEAD LICE

The Cedar Rapids Community School District head lice procedures follow recommendations from the Iowa Department of Public Health, Iowa Department of Education and Centers for Disease Control. The District's role is to support parents by emphasizing prevention, early detection and education.

Students with signs and symptoms of head lice will be referred to the health office for assessment. Parents/guardians of students found to have live lice or nits (eggs) within ½ inch of the scalp, will be notified and provided with information regarding treatment and management. In the elementary schools, families with a child in the classroom will receive a note from the health office along with information regarding identification and management of head lice. Students are not excluded from school for live head lice or nits.

It is important that families check their child's head for lice on a routine basis. Regular home screening is the most effective measure in preventing, identifying, and controlling head lice.

VACCINATION UPDATES

There are many new vaccinations available to you and your children. Here is a quick review on some of the new vaccinations that your family may be interested in.

The American Academy of Pediatrics (AAP) and the Centers for Disease Control and Prevention (CDC) have made the following recommended changes for vaccinations.

- **Hepatitis A-** Viral hepatitis describes those infections that can cause inflammation of the liver and are caused by viruses. There are Hepatitis A, B, and C. The hepatitis A vaccination is now **recommended** for administration to ALL CHILDREN from 12 to 23 months old. A second dosage is needed 6 months after the initial dose or if not given as an infant.
- **Meningococcal vaccine-** Meningitis is a bacterial or viral infection that causes an inflammation of the membranes of the spinal cord or brain. A single dosage of the Meningococcal vaccine prevents some of the bacterial meningitis illnesses and is **recommended** for all 11- to 12-year-olds and for unimmunized adolescents entering high school. In addition, all college freshmen that will be living in a dormitory should be immunized.
- **Pertussis-** Pertussis is an infectious disease that is characterized by a whooping type cough. A preparation of tetanus, diphtheria and pertussis vaccine (Tdap) is **recommended** for 11 to 18 years old.
- **Human Papilloma Virus (HPV)-** HPV is a viral infection that is common in sexually active people and is almost always sexually transmitted. HPV can cause genital warts and is one of the causes of cervical cancer. It is **recommended** for 11- to 12-year-old girls and up to the age of 26. The vaccine is given through a series of three shots over a six-month period.

Consult your health care provider to decide which vaccinations would be appropriate to give to your child. **The Cedar Rapids school based health clinic, Metro Care Connection (MCC), is also available to give immunizations to students who are uninsured or underinsured. For more information or to make an appointment at one of MCC's several locations, call 319-558-2481.**

All outside doors will remain locked from 8:50 a.m. to 3:50 p.m. for safety purposes.

2019**March****2019**

Sunday	Monday	Tuesday	Wednesday	Thursday	Friday	Saturday
					Day 1 Staff Learning Day – Early Dismissal 2:20 1	2
3	Day 2 4	Day 3 5	Day 1 6	Day 2 7	Day 3 8 Staff Learning Day – Early Dismissal 2:20	9
10	Day 1 11	Day 2 12	Day 3 13	Day 1 14 2 nd & 3 rd Grade Music Concert at Harding MS 6:30pm	Day 2 15 Staff Learning Day – Early Dismissal 2:20	16
17	18	19	20	21	22	23
	SPRING BREAK/HOLIDAY					
24	Day 3 25	Day 1 26	Day 2 27	Day 3 28	Day 1 29 Staff Learning Day – Early Dismissal 2:20	30
31						

STUDENT PROGRESS REPORTS

Parent will hear about their student's progress during October conferences. Report Cards will be shared with parents at the end of the first semester. Second semester conferences are student-led and all students are required to attend and lead the conference with their parents and teacher.

A final Report Card will be sent home with students at the end of the school year. Additional conferences may be arranged at any time during the year with individual teachers. If you are unable to attend your student's scheduled conference please call the office.

LOST AND FOUND

Lost and found articles are placed in a box in the front hall. Parents and children are urged to check the box for lost articles. Every effort will be made to return lost items to the owner. Proper marking of children's clothing and other articles is essential. Unclaimed items will be donated to charity.



CLASSROOM CELEBRATIONS

There are three celebrations for students scheduled during the year: **Fall, Winter, and Spring**. The teacher and homeroom parents will mutually decide who will furnish the treats for the classroom parties, and how much will be provided.

TOYS AT SCHOOL

Games and equipment are supplied by the school for children to use during recess. **Students should NOT bring trading cards, sports cards, computer games, toys, dolls, music players, etc., to school to show or share unless approved by the teacher.** The school will not be responsible for such items that are lost, stolen, or damaged while at school.

PETS AT SCHOOL

Children may not bring pets to school unless the teacher or Principal gives prior permission. Many children fear animals or are allergic to them. If a child's parent does bring in a pet for sharing (after receiving permission), it should be on a leash or in a cage and should return home after the sharing session. Please do not bring in any wild animals (birds, snakes, rabbits, etc) to school.

Pets should not be on school grounds, without prior approval, when students are present. This includes both arrival and dismissal time.

VISITORS

The welcome mat is out for parents to visit our classrooms. On some days, like during Iowa Assessment testing, it is better to re-schedule a visit. It is required to call the teacher prior to visiting, as classroom schedules vary. Children may only visit in an elementary classroom when accompanied by an adult.

All visitors are required to stop in the main office and sign in prior to a visit in the building.

All outside doors will remain locked from 8:50 a.m. to 3:50 p.m. for safety purposes.

2019**April****2019**

<i>Sunday</i>	<i>Monday</i>	<i>Tuesday</i>	<i>Wednesday</i>	<i>Thursday</i>	<i>Friday</i>	<i>Saturday</i>
	Day 2 1	Day 3 2	Day 1 3	Day 2 4	Day 3 Staff Learning Day – Early Dismissal 2:20 5	6
7	Day 1 8	Day 2 9	Day 3 10	Day 1 11	Day 2 Staff Learning Day – Early Dismissal 2:20 12	13
14	Day 3 15	Day 1 16	Day 2 17	Day 3 18	19 Staff Progress Reporting Day – NO SCHOOL FOR STUDENTS	20 Jewish Passover
Easter 21	Day 1 22	Day 2 23	Day 3 24	Day 1 25	Day 2 Staff Learning Day – Early Dismissal 2:20 26	27
Orthodox Easter 28	Day 3 29	Day 1 30				

CHAPTER 102 - REPORTING CHILD ABUSE

Chapter 102 of the Iowa Administrative Code establishes procedures for investigating incidents of abuse of students by school employees. The procedures include the designation of investigators for the 2018-2019 School Year. The following are the designated Level I investigators for the CRCSD. Any of the following persons may serve as an investigator.

Any person may file a Level I complaint against a Cedar Rapids Community School District employee by completing a Level I complaint form and turning it in to his/her building principal. The complaint may be turned in to any of the individuals on the list below. These forms may be obtained in any school's main office or at the Educational Leadership and Support Center, 2500 Edgewood Road NW, Cedar Rapids, Iowa, in the Human Resources Office.

LEVEL I INVESTIGATORS

PRIMARY: Val Dolezal, Executive Director, Elementary Education – 319/558-2247

ALTERNATES:

Greg O'Connell, Principal, Coolidge Elementary School - 319/558-2167
Chuck McDonnell, Principal, Jefferson High School - 319/558-2435
Wendy Parker, Executive Director, Student Services - 319/558-2575

LEVEL II INVESTIGATORS

If a case is designated as "founded", it is turned over to a designated Level II Investigator Agency:

Cedar Rapids Police Department
Kathy Collins J.D., School Investigations

Approved by Board of Education: 6/11/2018
Distributed by: Human Resources: 6/2018

PROGRAM FOR ACADEMIC AND CREATIVE TALENT (PACT)

The elementary school PACT department provides advanced learning experiences for high ability students. PACT Resource Specialists serve the schools on a rotating schedule, offering students the opportunity to participate in challenging activities in such areas as science, humanities, mathematics, and language arts. ACE, Prime Time and PACT are the three programs offered in our elementary buildings.

ACE (KINDERGARTEN & 1st GRADES)

ACE (Academic Challenge Experiences) is a kindergarten and first grade program. The ACE program manager will visit all kindergarten and first grade classrooms a minimum of four times throughout the school year. Lessons will focus on and develop the student's ability to think creatively, critically, logically and to problem solve. Data collected will be used by the classroom teacher and PACT department to aid in determining the need for extensions and future programming.

PRIME TIME (2nd & 3rd GRADES)

Prime Time is a demanding academic program that serves second and third grade students. Students selected for Prime Time have demonstrated potential in a specific intellectual area. There will be opportunities for enrichment in the fall for 2nd grade students. All students in 2nd grade are screened in January. All students in 3rd grade are screened in September and January. Students are selected for this program based on the results of the screening activity, district assessments and teacher observations. Those students selected will meet with the PACT Resource Specialist weekly.

PACT (4th & 5th GRADES)

PACT provides challenging curriculum experiences for high ability students in fourth and fifth grade. Multiple criteria will be used to select students for PACT classes. Criteria include: PACT unit screening scores, achievement tests, ability tests and teacher observations. Students selected will meet with the PACT Resource Specialist weekly.

All outside doors will remain locked from 8:50 a.m. to 3:50 p.m. for safety purposes.

2019**May****2019**

<i>Sunday</i>	<i>Monday</i>	<i>Tuesday</i>	<i>Wednesday</i>	<i>Thursday</i>	<i>Friday</i>	<i>Saturday</i>
			Day 2 1	Day 3 2	Day 1 3 Staff Learning Day – Early Dismissal 2:20	4
5	Day 2 6	Day 3 7	Day 1 8	Day 2 9	Day 3 10 Staff Learning Day – Early Dismissal 2:20	11
12	Day 1 13	Day 2 14	Day 3 15	Day 1 16 <i>Kindergarten & 1st Grade Music Concert at Harding MS 6:30pm</i>	Day 2 17 Staff Learning Day – Early Dismissal 2:20	18
19	Day 3 20	Day 1 21	Day 2 22	Day 3 23	Day 1 24 Staff Learning Day – Early Dismissal 2:20	25
26	27 <i>Memorial Day- NO SCHOOL</i>	Day 2 28	Day 3 29	Day 1 30 Last Day for Preschool	Day 2 31 LAST DAY OF CLASSES - Early Dismissal 2:20	

Schools play an important role in promoting and maintaining their students' health.
Healthy students are better learners. But schools can't do it alone. Parents are the other crucial half of the equation to provide the healthy start that kids need to thrive in the classroom and in life.



Look for the **LiveWellness** logo throughout the district for examples of how we help your child stay healthy, strong and ready to learn.



All school districts are required to have a wellness policy. Cedar Rapids Community Schools Wellness Policy can be found on our district website. Here's what our commitment to wellness looks like:

Our school will:

- Provide health education, including nutrition, in the curriculum
- Provide multiple opportunities for physical activity to meet or exceed the Healthy Kids Act requirements (30 min/day for Elementary Schools, 120 min/week for Middle & High Schools)
- Serve school meals that reflect the Dietary Guidelines for Americans, model appropriate portion sizes and provide a well-balanced meal
- Discontinue using unhealthy foods for fundraisers
- Ensure all food and beverages made available during the school day (including snacks) meet District Nutritional Guidelines
- Require that students are physically active during the majority of time in physical education class
- Celebrate events involving food not more than one time each month (check with your school to see how birthdays are recognized)
- Discontinue using food/food coupons as rewards or incentives
- Ensure physical activity is not used for or withheld as a punishment

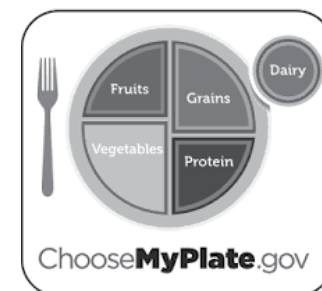
To support wellness in our schools, families will:

- Send food items for classroom celebrations only when requested by school staff
- Follow the District Nutritional Guidelines when providing meals/snacks (unhealthy treats will not be distributed)
- Help plan and support fundraising events that do not involve food

For more information, visit www.cr.k12.ia.us/our-district/wellness/. The District Wellness Policy can be found in the District Notifications section of the handbook.

Want to get involved? Join your School Wellness Council or the District Wellness Council.

If you have questions about district wellness efforts, please contact Stephanie Neff, Health and Wellness Supervisor at 319.440.6647 or sneff@cr.k12.ia.us.




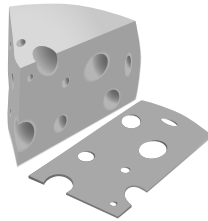
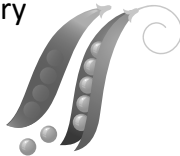
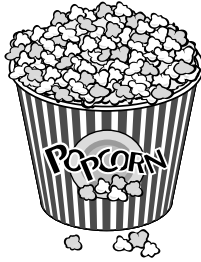


2019**June****2019**

<i>Sunday</i>	<i>Monday</i>	<i>Tuesday</i>	<i>Wednesday</i>	<i>Thursday</i>	<i>Friday</i>	<i>Saturday</i>
						1
2	3 Staff Learning Day – NO SCHOOL FOR STUDENTS <i>Potential Inclement Weather Makeup Days Id-al-Fitr</i>	4 <i>Potential Student/Staff Learning Inclement Weather Makeup Days</i>	5 <i>Potential Student/Staff Learning Inclement Weather Makeup Days</i>	6 <i>Potential Student/Staff Learning Inclement Weather Makeup Days Orthodox Ascension</i>	7 <i>Potential Student/Staff Learning Inclement Weather Makeup Days</i>	8
9	10	11	12	13	14	15
16	17	18	19	20	21	22
23	24	25	26	27	28	29
30						

HEALTHY SCHOOL SNACKS

Cedar Rapids Community School District

Snacks play a major role in a child's diet and provide a valuable opportunity for nutrition education. Healthy snacks are important to providing good nutrition and supporting lifelong healthy eating habits

Fruits: <ul style="list-style-type: none"> • Fresh fruit-whole or sliced • Assorted fruit salads • Dried Fruits • Applesauce • Individual fruit cups (packaged in juice) • 100% Fruit Juice • 100% Frozen Fruit Bars 	Low Fat Dairy/Protein: <ul style="list-style-type: none"> • String Cheese or Cheese Cubes • Yogurt • Cottage Cheese • Deli Meat • Sunflower Seeds • Pepita/Pumpkin seeds 
Vegetables: <ul style="list-style-type: none"> • Raw Vegetables Simple kid-friendly examples: Baby Carrots, Broccoli, Cauliflower, Snap Peas, Sliced Peppers, Celery • Dehydrated Vegetables <ul style="list-style-type: none"> • Vegetable Chips, Chickpeas • Edamame (Soybeans) 	Whole Grains: <ul style="list-style-type: none"> • Crackers • Low Sodium Pretzels • Pita Chips • Popcorn • Low Fat Granola Bars • Baked Corn Tortilla Chips • Animal Crackers • Graham Crackers 
Snack tips <ul style="list-style-type: none"> • Snack on fruit and vegetables whenever possible. • Select appropriate portion sizes. • For food safety select sealed and prepackaged snack items. • Combine protein and fiber for a satisfying snack. 	Drinks: <ul style="list-style-type: none"> • Water • Low Fat or Fat Free Milk • 100% Fruit/Vegetable Juice 
Dip Ideas: Hummus, Salsa, Bean dip, Honey Mustard, Yogurt based dips	

The provided list is not all inclusive. Reference [CRCSD Nutritional Standards](#) for specific guidance.

The Wright Community learns in a student centered environment where relationships are valued

WRIGHT SCHOOL SONG

(Sung to the tune of “You’re A Grand Old Flag”)

You’re a grand old school,
you’re a high-ranking school,
you’re the best in the land we all say.

Here the kids are smart,
and do their part,
we’re loyal to you every day.

Every heart beats true,
for our own white and blue,
you’re the best school in every way.

Should auld acquaintance be forgot,
Wright School is here to stay!

Yeah Blue! Yeah White!
We’re glad we’re Wright!

Wright Elementary School

<http://wright.cr.k12.ia.us>

1524 Hollywood Blvd. N.E. • Cedar Rapids, Iowa 52402

Telephone: 558-2278

Brian Krob, Principal

Transportation: 558-2318



Cedar Rapids
Community School District

Non-Discrimination Policy

It is the policy of the Cedar Rapids Community School District not to discriminate in educational programs on the basis of race, creed, color, gender, sexual orientation, marital status, gender identity, socioeconomic status, national origin, religion, disability, age (except for permitting/prohibiting students to engage in certain activities) or genetic information and in employment opportunities on the basis of age, race, creed, color, gender, sexual orientation, gender identity, national origin, religion, disability or genetic information. There is a grievance procedure for processing complaints of discrimination. If you have questions or a grievance related to this policy, please contact Rod Dooley, Executive Director of Equity, (RDooley@cr.k12.ia.us), and/or Linda Noggle, Executive Director of Talent Management, (LNoggle@cr.k12.ia.us), Educational Leadership and Support Center, 2500 Edgewood Rd NW, Cedar Rapids, IA, (319) 558-2000.

Nov. 7, 2017