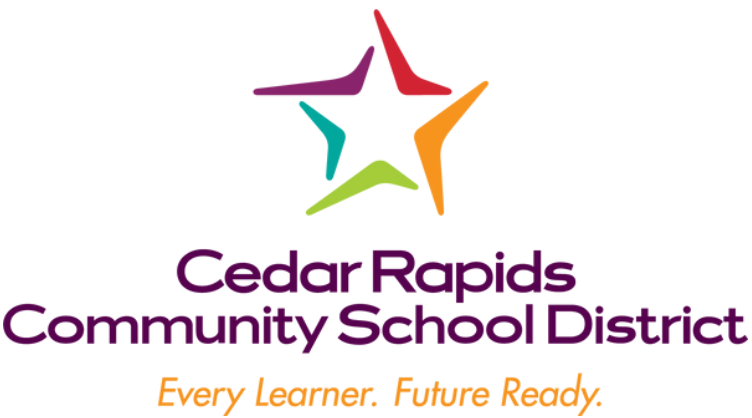


# FUTURE FIRST FLOOR PLAN WITH HISTORY MAINTAINED



## RENOVATION OVERVIEW

**As we move forward with renovations at Harrison Elementary School, we remain committed to honoring the building’s rich history and character.**

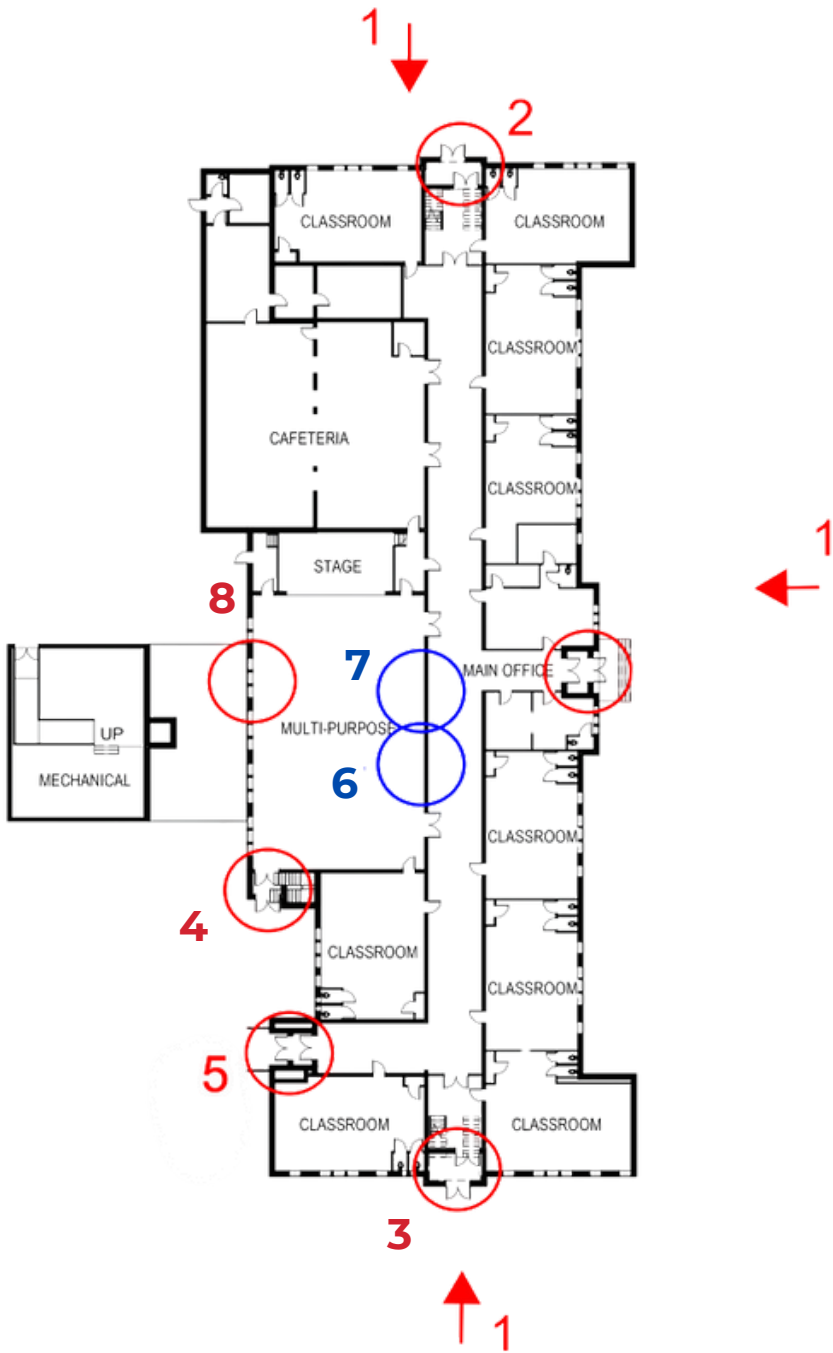
While modern updates will enhance the learning environment for current and future students, we’re taking great care to preserve the school’s historic touches—those special details that have made Harrison a beloved part of the community for generations. From architectural features to original design elements, these pieces of the past will be thoughtfully integrated into the updated space, ensuring that while the school evolves, its legacy remains firmly in place.



The renovations at Harrison Elementary will significantly enhance the building’s sustainability. With energy-efficient systems, improved insulation, and eco-friendly materials, the updated school will reduce its environmental impact while creating a healthier, more efficient space for students and staff.



The renovations at Harrison Elementary will also prioritize student and staff safety. Upgrades will include secure entryways, improved visibility, and updated safety systems—ensuring a more secure, welcoming environment for all who learn and work in the building.



# HARRISON RENOVATION PLAN







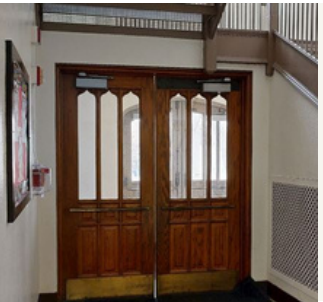
1) Exterior

At the North, East and South Exterior Elevations, the character of the building is to be maintained. The brick and stone will be cleaned, and the joints will be tuckpointed as necessary. The windows and doors will be replicated using modern materials, but the colors and patterning will be maintained to preserve the aesthetic. The shingle roof is to be replaced with like material.



2) North Doors

At the north entry vestibule the stone entry surround will be cleaned and remain, and the interior doors with their historic push bars will be preserved in place.



3) South Entry

At the south entry vestibule the stone entry surround will be cleaned and remain. The interior doors will be preserved in place.



\*RENDERING\*



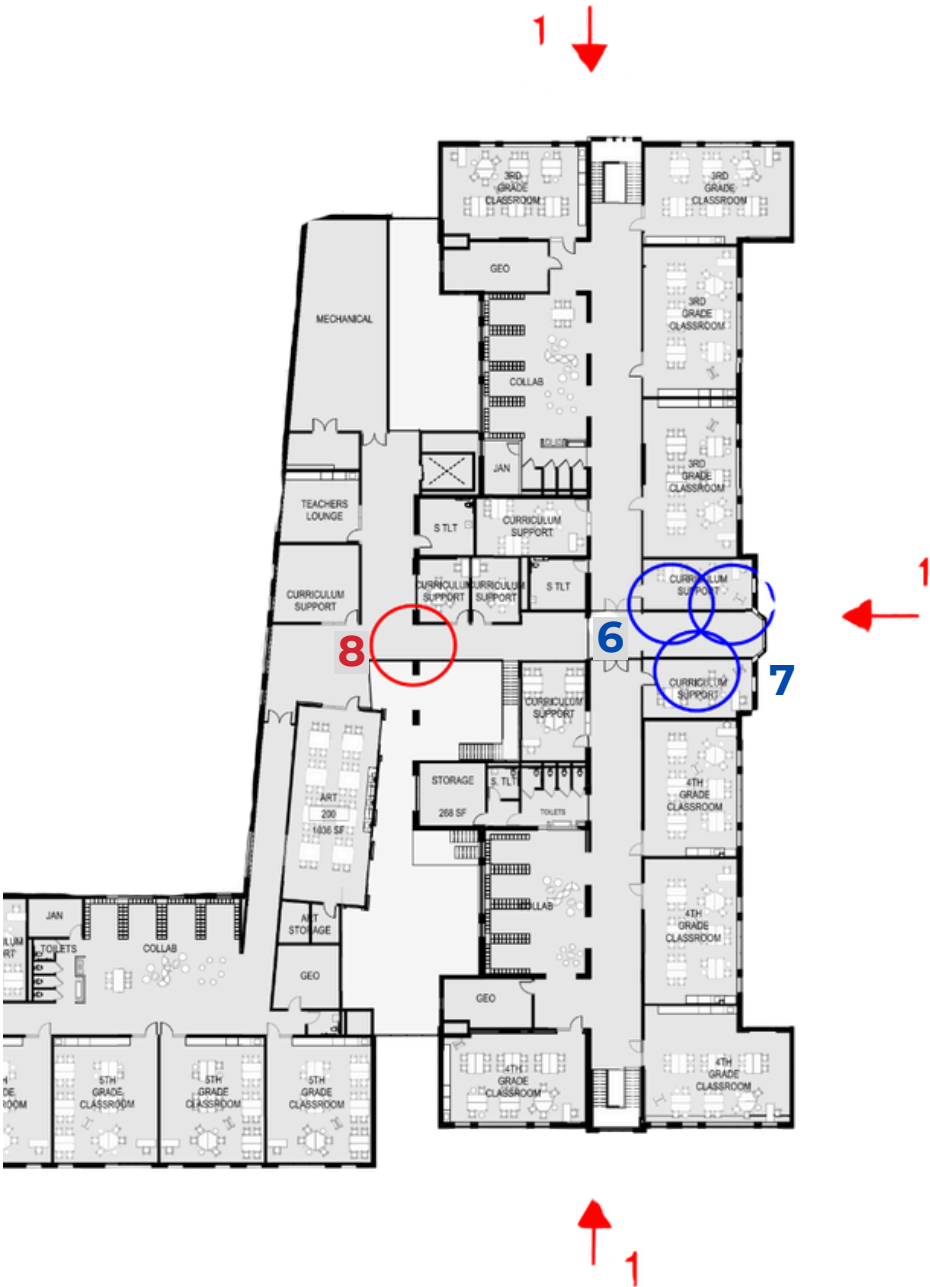
4) Old Gym Exit

At the old southwest exit from the gymnasium, the exit is not being maintained but the stone door surround is being preserved, and a new bench is being installed.



\*RENDERING\*

# FUTURE SECOND FLOOR PLAN WITH HISTORY MAINTAINED



\*RENDERING\*

5) Trophy Case

At the southwest old entry area, the exit is not being maintained. However, the opening is being preserved with a new built-in display case that can hold smaller historic items such as the time capsule from the 60 years of dedication ceremony.



6) Interior Windows

Interior windows from the first-floor corridor into the gym are being preserved and relocated to the new second-floor gallery area. At the second-floor corridor, interior windows into the gymnasium are being preserved and relocated to the new second-floor gallery area.



\*RENDERING\*



\*RENDERING\*

7) Mural

The mural from the first-floor corridor is being preserved and relocated to the new second-floor gallery area.



\*RENDERING\*

8) Arched Windows

Some of the existing arched exterior window openings on the west elevation are being preserved. The windows and some portions of wall are being removed so that these openings can be used as circulation between the existing building and the addition. A portion of the existing building gymnasium will become a new 'learning-stair' gathering and circulation space in the heart of the school.